

The background of the slide features a close-up of an olive branch with several green olives. The branch is positioned diagonally across the frame. In the background, a bright sun is visible, creating a soft, golden glow and casting long, thin shadows of the leaves and olives. The overall color palette is warm and natural, with shades of green, yellow, and white.

REPRESENTATION REVIEW 2024

TE WHAKAMINENGA O KĀPITI UPDATE

June 2024

Scene-setting

- Representation Review underway as a result of Council resolving to establish a Māori ward in November 2023
- Council resolved a staff-led preliminary community engagement approach for the Representation Review in December 2023.

Purpose of session

- Discuss recent Government announcements in relation to Māori wards and impacts on representation review underway
- Provide a summary of the preliminary community engagement undertaken
 - Approach, Activities and Key Conversations
 - Results of Engagement
- Provide an initial overview of representation arrangement options discussed with councillors

Local Government (Electoral Legislation and Māori Wards and Constituencies) Amendment Bill

Option 1:

Continue with the establishing a Māori ward at the next local body elections in 2025.

This option would mean that a Māori ward councillor would be elected at the 2025 local body elections and a poll would be required to be held at the same time as the elections to determine whether the Māori ward would still be in place at the 2028 local body elections. If the poll outcome was to disestablish the ward again, a further representation review would be required in 2027.

If the poll outcome was to retain the Māori ward no further review would be required in 2027.

Option 2:

Rescind the decision to establish a Māori ward

This option would mean that a Māori ward councillor would not be elected at the 2025 local body elections and a poll would not be required to be held at the next elections.

As part of this option, Council would then have to decide whether to:

A

Cease the current representation review process underway and revert back to the existing representation arrangements

B

Conduct a shortened representation review by April 2025 to determine the representation arrangements for the 2025 local body elections.

Where we are at in the process



- ! Expected enactment of Local Government (Electoral Legislation and Māori Ward and Constituencies)
- Amendment Bill – end of July 2024

Preliminary community engagement approach

- *What we heard from Councillors*
 - Conduct preliminary community engagement and staff-led
 - Process as simple as allowed under legislation
- *What we have done in response*
 - Engaged with mana whenua from January onwards
 - Created infographics and FAQ documents
 - Created Have Your Say survey – live from 4 March to 2 April
 - Held Drop-in sessions for the community to ask questions

Questions we asked

- Do you think the existing representation arrangements provide fair and effective representation?
- Is there anything that doesn't work well with the current arrangements?
- Which concept you think would provide us with the most representative and effective Council structure or alternatively let us know what other ideas you think might work best?
- Should ward Councillors be appointed back to Community Boards and, if so, how?

	Potential representation concepts		
Current Council structure	Concept 1	Concept 2	Concept 3
No current Māori ward Councillor	Add Māori ward Councillor to current structure and increase the number of Councillors around the Council table by one.	Replace one districtwide Councillor with a Māori ward Councillor and retain the same number of Councillors around the Council table.	Replace one general ward Councillor with a Māori ward Councillor and retain same number of Councillors around the Council table.
1 Mayor	1 Mayor	1 Mayor	1 Mayor
10 councillors	11 councillors	10 councillors	10 councillors
<ul style="list-style-type: none"> 3 districtwide Councillors 7 general ward Councillors 	<ul style="list-style-type: none"> 3 districtwide Councillors 7 general ward Councillors 1 Māori ward Councillor – covering the entire district 	<ul style="list-style-type: none"> 2 districtwide Councillors 7 general ward Councillors 1 Māori ward Councillor – covering the entire district 	<ul style="list-style-type: none"> 3 districtwide Councillors 6 general ward Councillors 1 Māori ward Councillor – covering the entire district
20 Community Board Members	20 Community Board Members	20 Community Board Members	20 Community Board Members

Note: The impact on ward boundaries would be more significant depending on which ward Councillor was replaced.

Results – Key Findings

- In total 285 submissions received.
- Majority do not think any changes to the status quo is needed and that the current arrangements work well.
- Majority support including the Māori ward with minimal changes to the status quo.
- Majority supports retaining the current Councillor to community board appointment structure

Councillor views

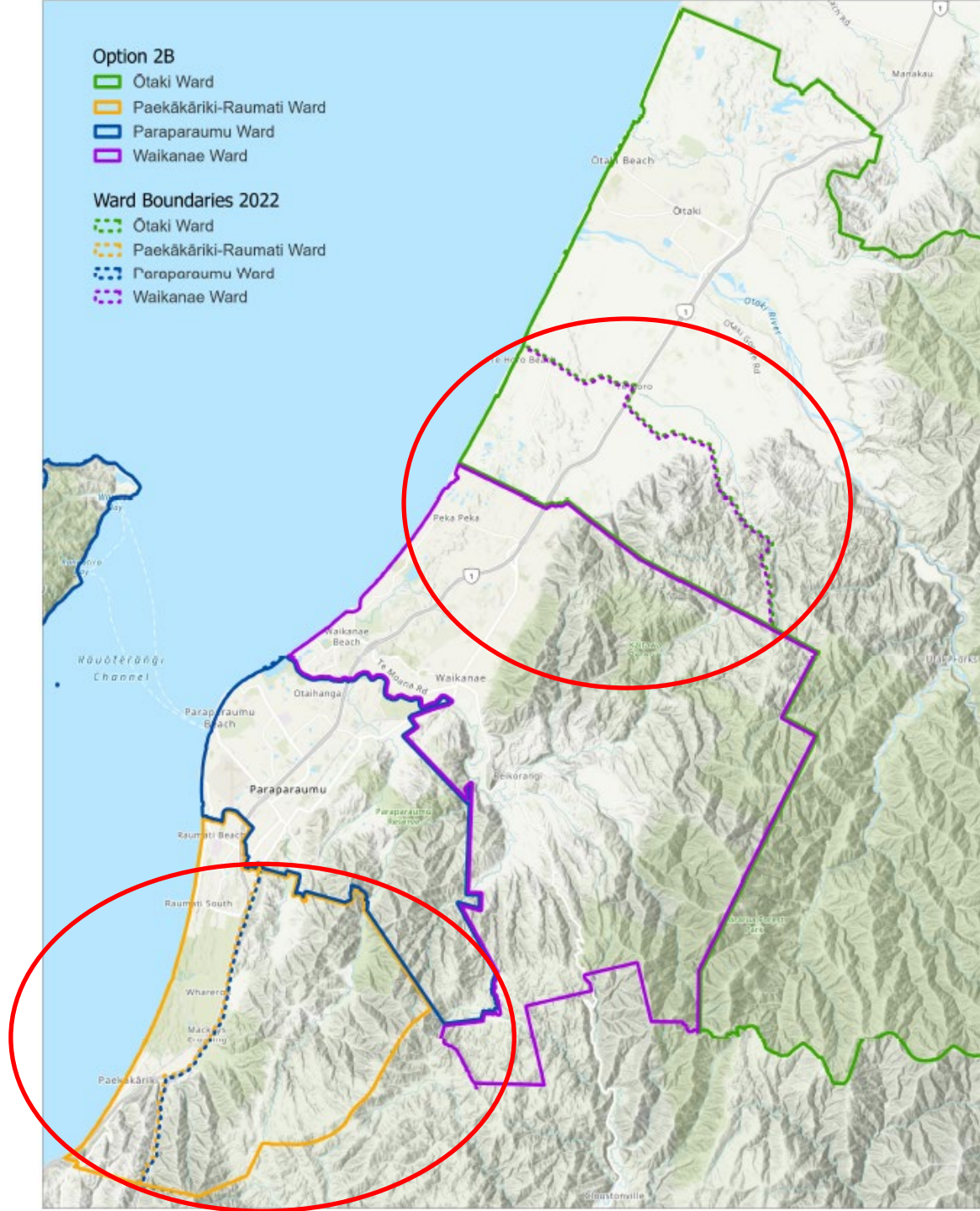
- Public briefings on the survey results and possible representation options were held for elected members and mana whenua representatives on 23 April 2023 and on 21 May 2024.
- Councillors indicated an interest in retaining current representation arrangements with the inclusion of a Māori ward but explore:
 - Adjusting the ward boundaries at Te Horo and Emerald Glen
 - Appointing the Māori ward councillor to community boards in a way to ensure the councillor appointments to community boards are fair and equitable

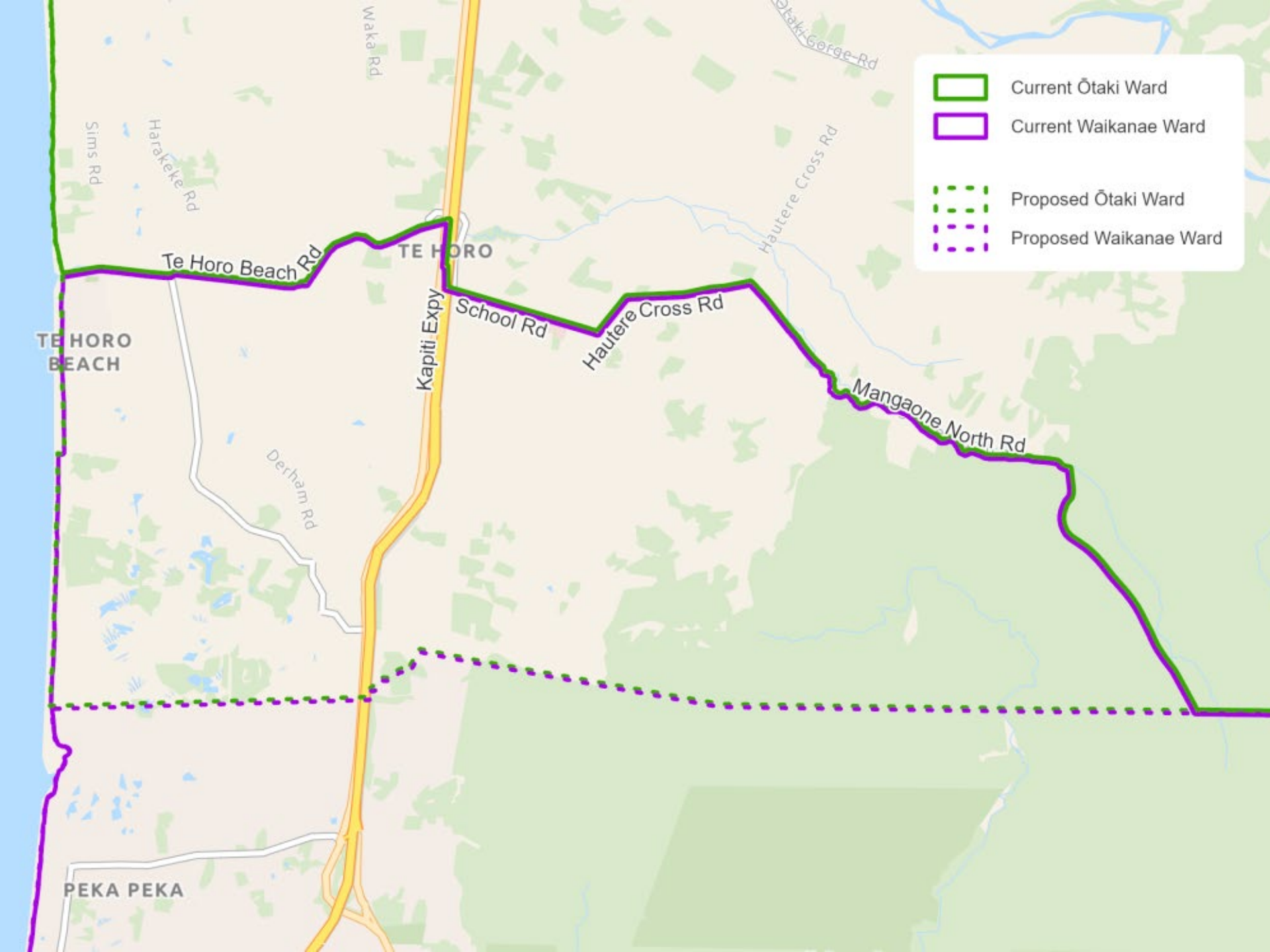
Option 2B

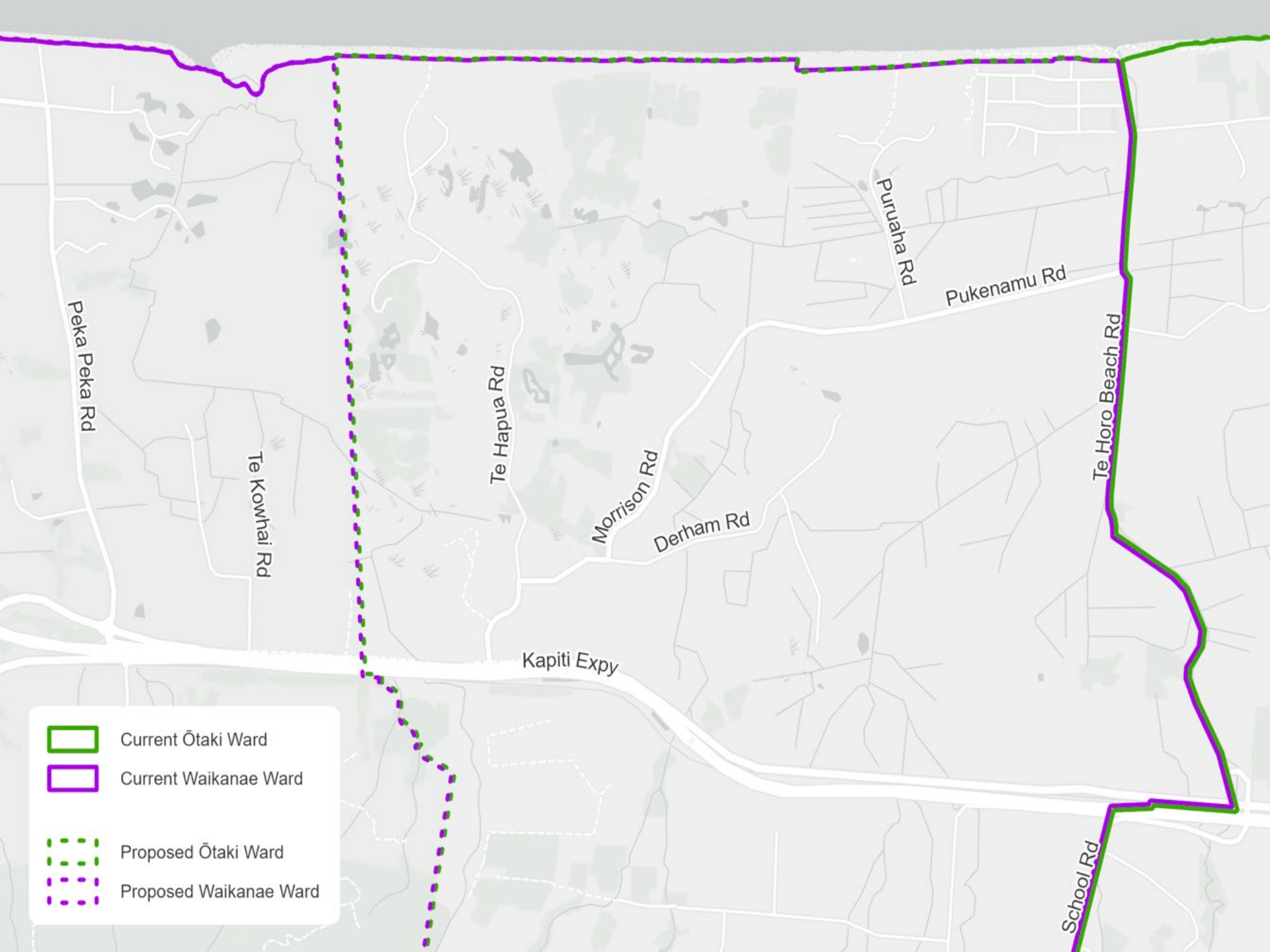
- Ötaki Ward
- Paekākāriki-Raumati Ward
- Paraparaumu Ward
- Waikanae Ward

Ward Boundaries 2022

- Ötaki Ward
- Paekākāriki-Raumati Ward
- Paraparaumu Ward
- Waikanae Ward







Peka Peka Rd

Te Kowhai Rd

Te Hapua Rd

Morrison Rd

Derham Rd

Kapiti Expy

Puruhaha Rd

Pukenamu Rd

Te Horo Beach Rd

School Rd


Legend:

- Current Ōtaki Ward
- Current Waikanae Ward
- Proposed Ōtaki Ward
- Proposed Waikanae Ward

Population Data

Ward	Māori Electoral Population	General Electoral Population	Members	Population per Member	Difference from Quota (7,644)	% Difference from Quota
Ōtaki General Ward	N/A	8,510	1	8,510	866	11.32% (underrepresented)
Paraparaumu General Ward	N/A	22,900	3	7,633	-11	-0.14% (overrepresented)
Waikanae General Ward	N/A	13,800	2	6,900	-744	-9.74% (overrepresented)
Paekākāriki-Raumati General Ward	N/A	8,300	1	8,300	656	8.58% (underrepresented)
Kāpiti Coast Māori Ward	4,930	N/A	1	4,930	N/A	The quota requirement does not apply to the Māori ward.
District Total	4,930 (Māori electoral population) + 53,510 (General electoral population) = 58,470					

Representation Arrangement Options

Initial representation options				
Current Council structure No current Māori ward Councillor	Option 1 Add Māori ward Councillor to current structure and increase the number of Councillors around the Council table by one.	Option 2 Replace one districtwide Councillor with a Māori ward Councillor and retain the same number of Councillors around the Council table.	Option 3 Remove current ward boundaries and elect all councillors by voters in the entire district. The Māori ward councillor would be elected by those on the Māori electoral roll and the nine general ward councillors by those on the general electoral roll.	
	1 Mayor	1 Mayor	1 Mayor	
	10 councillors  ● 3 districtwide Councillors ● 7 general ward Councillors	11 councillors  ● 3 districtwide Councillors ● 7 general ward Councillors ● 1 Māori ward Councillor – covering the entire district	10 councillors  ● 2 districtwide Councillors ● 7 general ward Councillors ● 1 Māori ward Councillor – covering the entire district	10 councillors  ● 9 general ward Councillors – covering the entire district ● 1 Māori ward Councillor – covering the entire district
	20 Community Board Members	20 Community Board Members	20 Community Board Members	20 Community Board Members

Community Board Appointments

- Elected members shared an interest in making community board appointments fair and equitable
- Preliminary Community Engagement supportive of retaining status quo
- Option to retain same appointment structure and also include the Māori ward councillor for all community boards:
“Appoint a specified number of General Ward Councillors and/or the Māori Ward Councillor”
- Works with both representation options and provides flexibility for Council to consider the most appropriate appointment structure at the start of the triennium

Mana Whenua Views

Mana Whenua to share their views

- What the inclusion of the Māori ward should look like
- What the appointment to community board structure should look like
- What their views are on suggested boundary changes
- What the name of the new Māori ward should be
- What the next steps in response to the Bill should be

Next Steps

- Report to 25 July 2024 Council meeting for a decision on an initial representation proposal
- Formal engagement with the community after that decision in line with provisions in legislation
- Submission hearing planned for September 2024
- Report to 31 October 2024 Council meeting for a decision on a final representation proposal

Questions?

