

A close-up photograph of an olive branch with several green olives. The background is a bright, hazy sky with the sun visible, creating a warm, golden glow. The text is overlaid on this image.

REPRESENTATION REVIEW 2024

REPRESENTATION ARRANGEMENT OPTIONS

Briefing – 21 May 2024

Purpose of session

- Discuss possible representation arrangement options
- Discuss next steps



Expected enactment of Local Government (Electoral Legislation and Māori Ward and Constituencies) Amendment Bill – end of July 2024

Local Government (Electoral Legislation Māori wards and Constituencies) Amendment Bill

- Bill has been introduced into the house
- Select Committee process expected in June and enactment in late-July
- Enactment of Bill likely to coincide with due date to resolve initial proposal
- Once Bill is enacted, during the transitional period (between day after royal ascent and 6 September), Council will have the option to rescind its decision to establish a Māori ward

What we have heard so far

- Majority of the respondents agree that the current arrangements are fair and representative and work well
- Majority of the respondents support Concept 2 (followed by Concept 1) which would not require significant changes
- Majority of respondents support retaining the current Councillor to community board appointment structure
- Elected members indicated a preference to keep the process as streamlined as possible and retain the status quo where possible

What we have heard so far

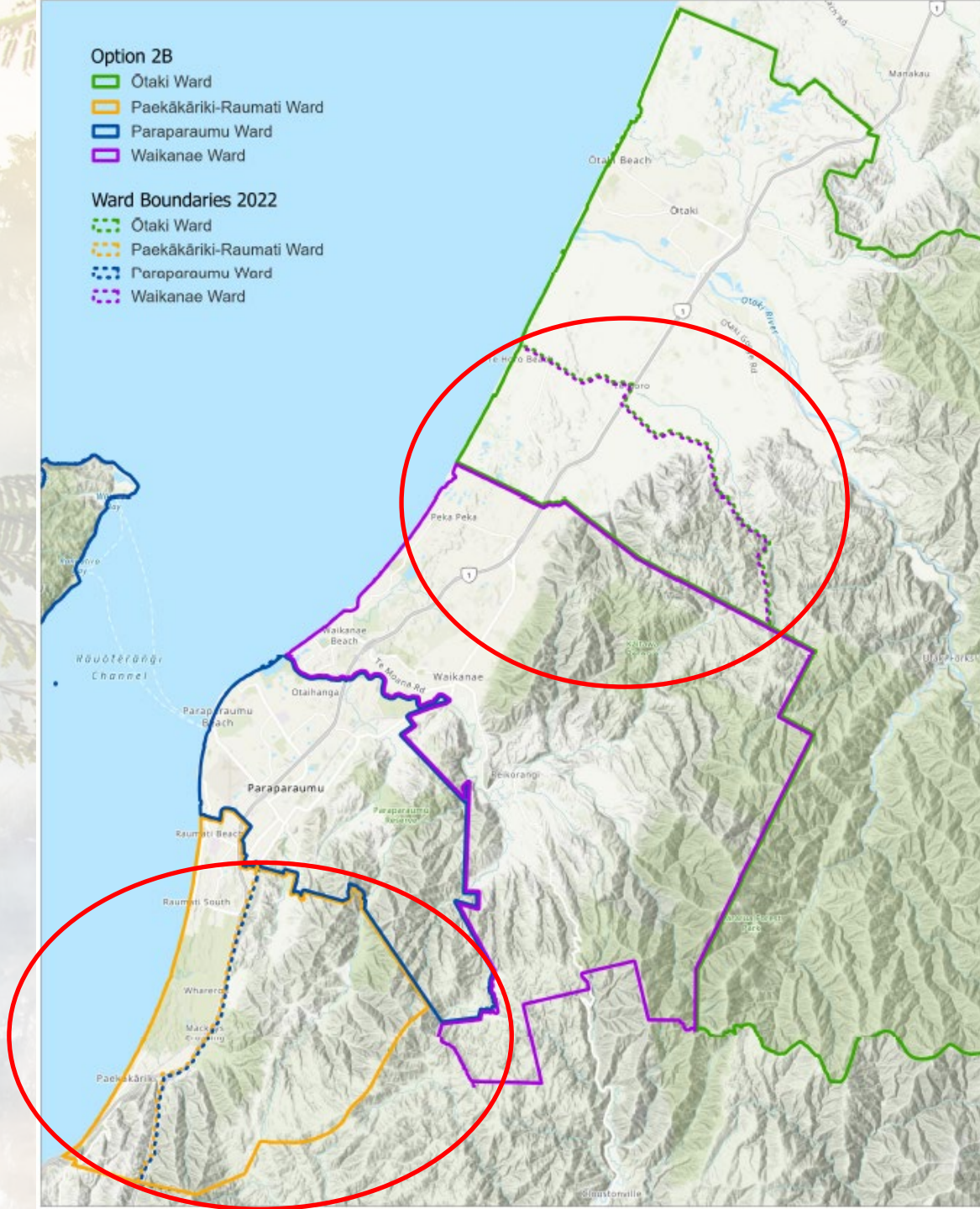
- A briefing on the survey results was held for elected members and mana whenua representatives on 23 April 2024 and elected members indicated an interest in retaining current representation arrangements with the inclusion of a Māori ward and:
 - Adjust the ward boundaries at Te Horo and Emerald Glen
 - Concept 2 preferred (replace one district-wide councillor with Māori ward councillor)
 - Explore appointing the Māori ward councillor to community boards in a way that ensures appointments to community boards are fair and equitable

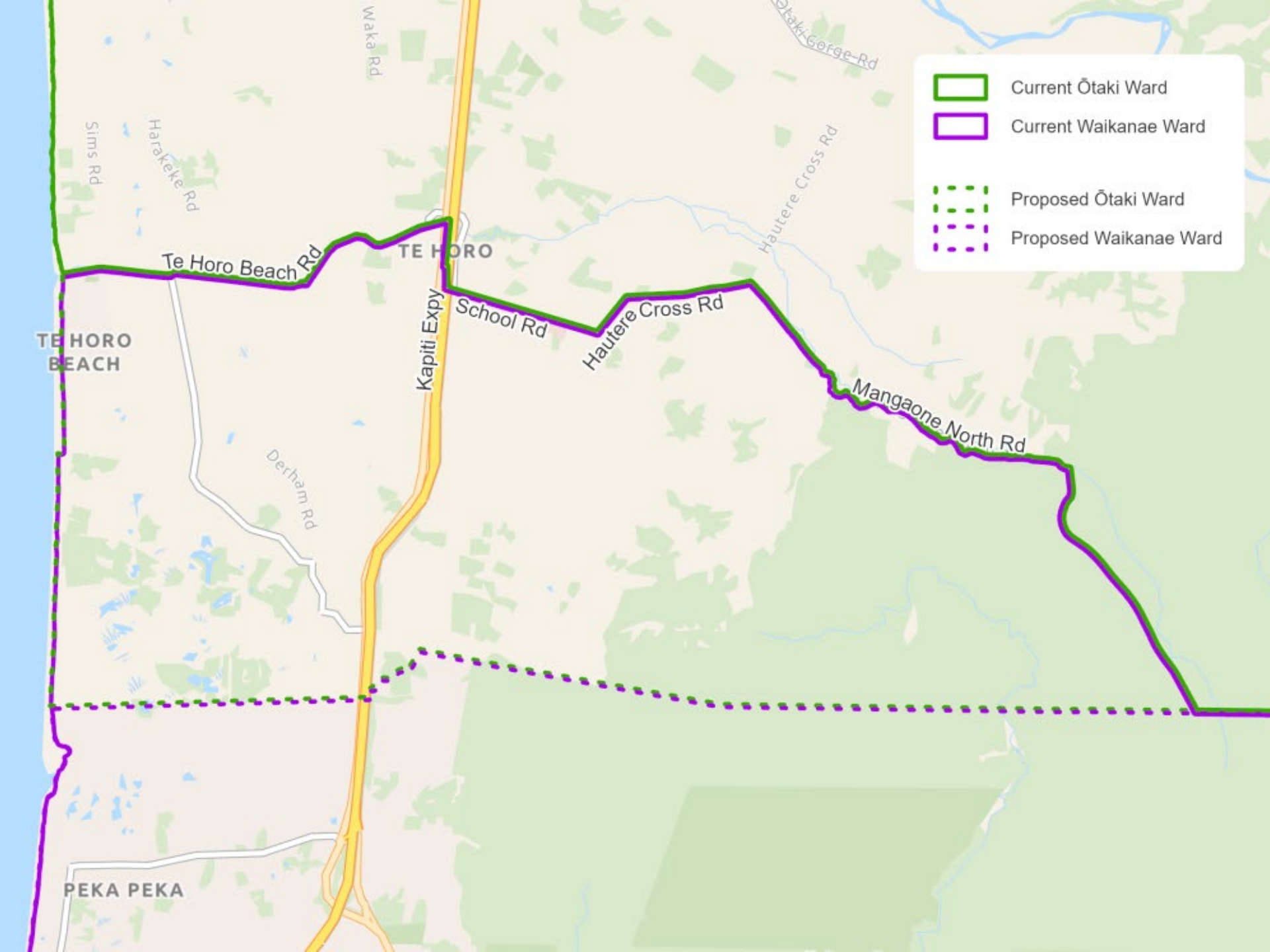
Option 2B

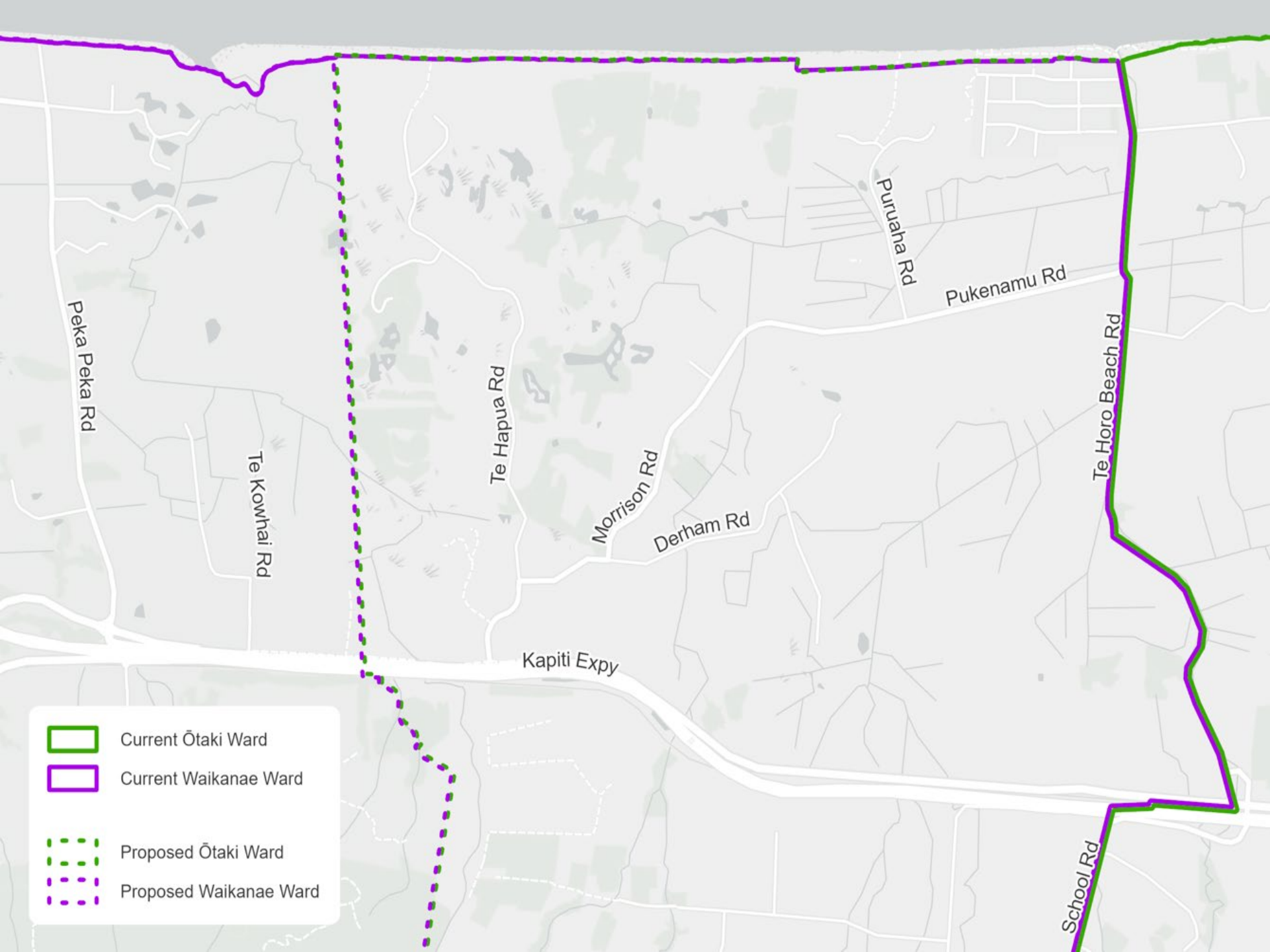
- Ötaki Ward
- Paekākāriki-Raumati Ward
- Paraparaumu Ward
- Waikanae Ward

Ward Boundaries 2022

- Ötaki Ward
- Paekākāriki-Raumati Ward
- Paraparaumu Ward
- Waikanae Ward







Current Ōtaki Ward



Current Waikanae Ward



Proposed Ōtaki Ward



Proposed Waikanae Ward

Population Data

Ward	Māori Electoral Population	General Electoral Population	Members	Population per Member	Difference from Quota (7,644)	% Difference from Quota
Ōtaki General Ward	N/A	8,510	1	8,510	866	11.32% (underrepresented)
Paraparaumu General Ward	N/A	22,900	3	7,633	-11	-0.14% (overrepresented)
Waikanae General Ward	N/A	13,800	2	6,900	-744	-9.74% (overrepresented)
Paekākāriki-Raumati General Ward	N/A	8,300	1	8,300	656	8.58% (underrepresented)
Kāpiti Coast Māori Ward	4,930	N/A	1	4,930	N/A	The quota requirement does not apply to the Māori ward.
District Total	4,930 (Māori electoral population) + 53,510 (General electoral population) = 58,470					

Representation Arrangement Options

Current Council structure

No current Māori ward Councillor

1 Mayor

10 councillors



- 3 districtwide Councillors
- 7 general ward Councillors

20 Community Board Members

Initial representation options

Option 1

Add Māori ward Councillor to current structure and increase the number of Councillors around the Council table by one.

1 Mayor

11 councillors



- 3 districtwide Councillors
- 7 general ward Councillors
- 1 Māori ward Councillor – covering the entire district

20 Community Board Members

Option 2

Replace one districtwide Councillor with a Māori ward Councillor and retain the same number of Councillors around the Council table.

1 Mayor

10 councillors



- 2 districtwide Councillors
- 7 general ward Councillors
- 1 Māori ward Councillor – covering the entire district

20 Community Board Members

Community Board Appointments

- Elected members shared an interest in making community board appointments fair and equitable
- Preliminary Community Engagement supportive of retaining status quo
- Option to retain same appointment structure and also include the Māori ward councillor for all community boards:
 - “*Appoint a specified number of General Ward Councillors and/or the Māori Ward Councillor*”
- Works with both representation options and provides flexibility for Council to consider the most appropriate appointment structure at the start of the triennium

Next Steps

- Report to 25 July 2024 Council meeting for a decision on an initial representation proposal
- Formal engagement with the community after that decision in line with provisions in legislation
- Submission hearing planned for September 2024
- Report to 31 October 2024 Council meeting for a decision on a final representation proposal

Background Slides



Timeframe	Steps taken so far/Decision made
Last triennium – 2021	During last representation review, Council considered the establishment of a Māori ward but deferred the consideration to this triennium. This decision was supported by mana whenua.
	Local Electoral (Māori Wards and Māori Consituencies) Amendment Act 2021 enacted to allow Councils to consider establishment of Māori wards without requiring a poll.
June 2022	Council resolved formal mana whenua representation to Council’s governance structure. This was re-confirmed after the elections in November 2022.
August 2022	Local Government Electoral Legislation Bill announced.
April 2023	Local Government Electoral Legislation Bill amended at second reading and provisions to consider a Māori ward are postponed to next triennium.
August 2023	Council resolved to consult with mana whenua and wider community on establishing a Māori ward
	Council resolves STV as Electoral System for 2025 local body elections.
14 November 2023 (ahead of 23 November deadline)	Council resolves to establish a Māori ward ahead of 2025 local body elections which triggers a Representation Review in 2024.
14 December 2023	Council resolves a staff-led preliminary community engagement approach for the Representation Review.
4 April 2024	Government announces reinstatement of poll provisions for Māori wards after the 2025 local body elections and transitional provisions for councils with (or are planning for) Māori wards

Government's announcement - what we know so far

Option 1:

Continue with the establishing a Māori ward at the next local body elections in 2025.

This option would mean that a Māori ward councillor would be elected at the 2025 local body elections and a poll would be required to be held at the same time as the elections to determine whether the Māori ward would still be in place at the 2028 local body elections. If the poll outcome was to disestablish the ward again, a further representation review would be required in 2027.

If the poll outcome was to retain the Māori ward no further review would be required in 2027.

Option 2:

Rescind the decision to establish a Māori ward

This option would mean that a Māori ward councillor would not be elected at the 2025 local body elections and a poll would not be required to be held at the next elections.

As part of this option, Council would then have to decide whether to:

A

Cease the current representation review process underway and revert back to the existing representation arrangements

B

Conduct a shortened representation review by April 2025 to determine the representation arrangements for the 2025 local body elections.

Details to be confirmed by DIA.

Population Data (no boundary changes)

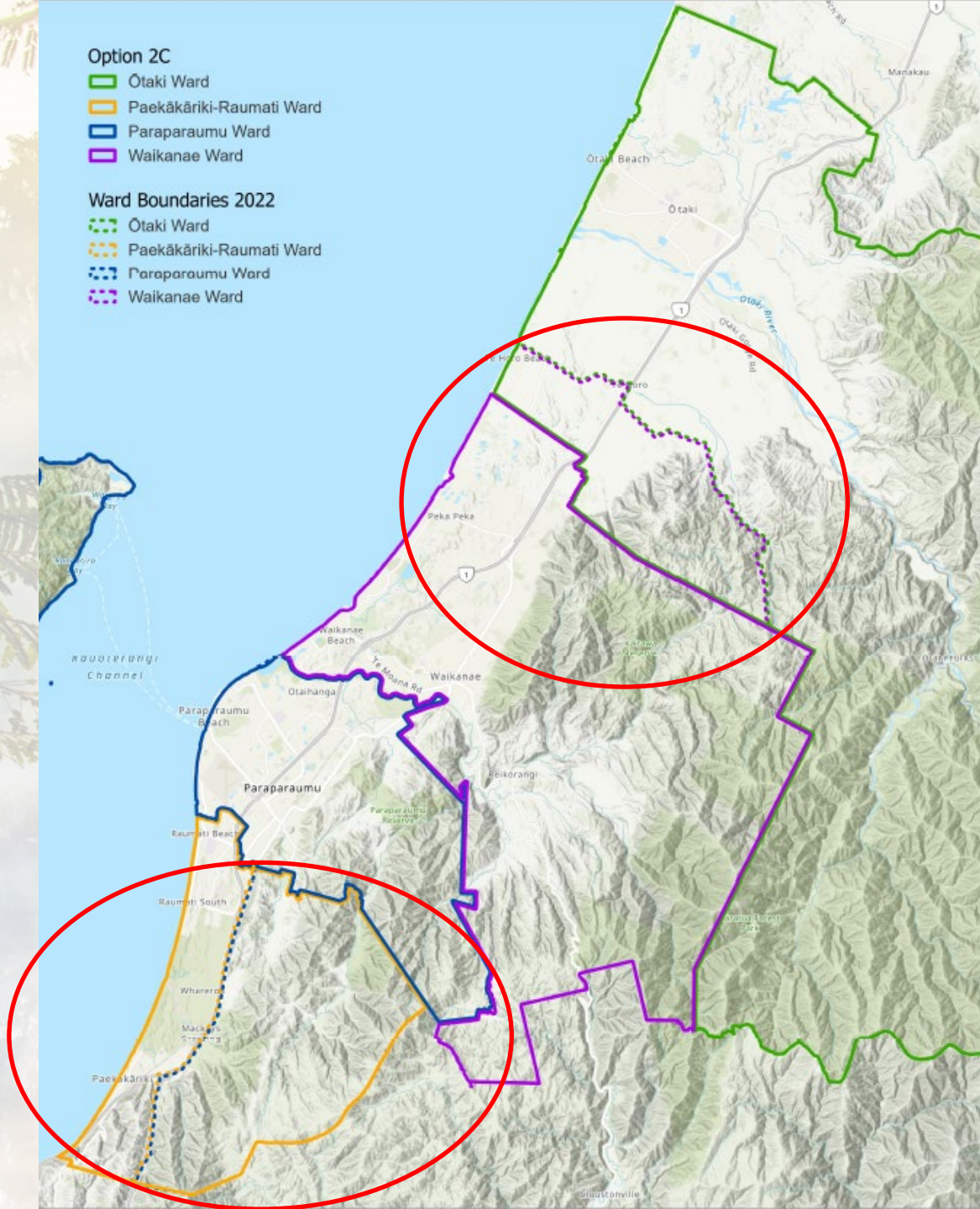
Ward	Māori Electoral Population	General Electoral Population	Members	Population per Member	Difference from Quota (7,649)	% Difference from Quota
Ōtaki General Ward	N/A	7,380	1	7,380	-269	-3.51% (underrepresented)
Paraparaumu General Ward	N/A	23,100	3	7,700	51	0.67% (overrepresented)
Waikanae General Ward	N/A	14,950	2	7,475	-174	-2.27% (underrepresented)
Paekākāriki-Raumati General Ward	N/A	8,110	1	8,110	461	6.03% (overrepresented)
Kāpiti Coast Māori Ward	4,930	N/A	1	4,930	N/A	The quota requirement does not apply to the Māori ward.
District Total	4,930 (Māori electoral population) + 53,540 (General electoral population) = 58,470					

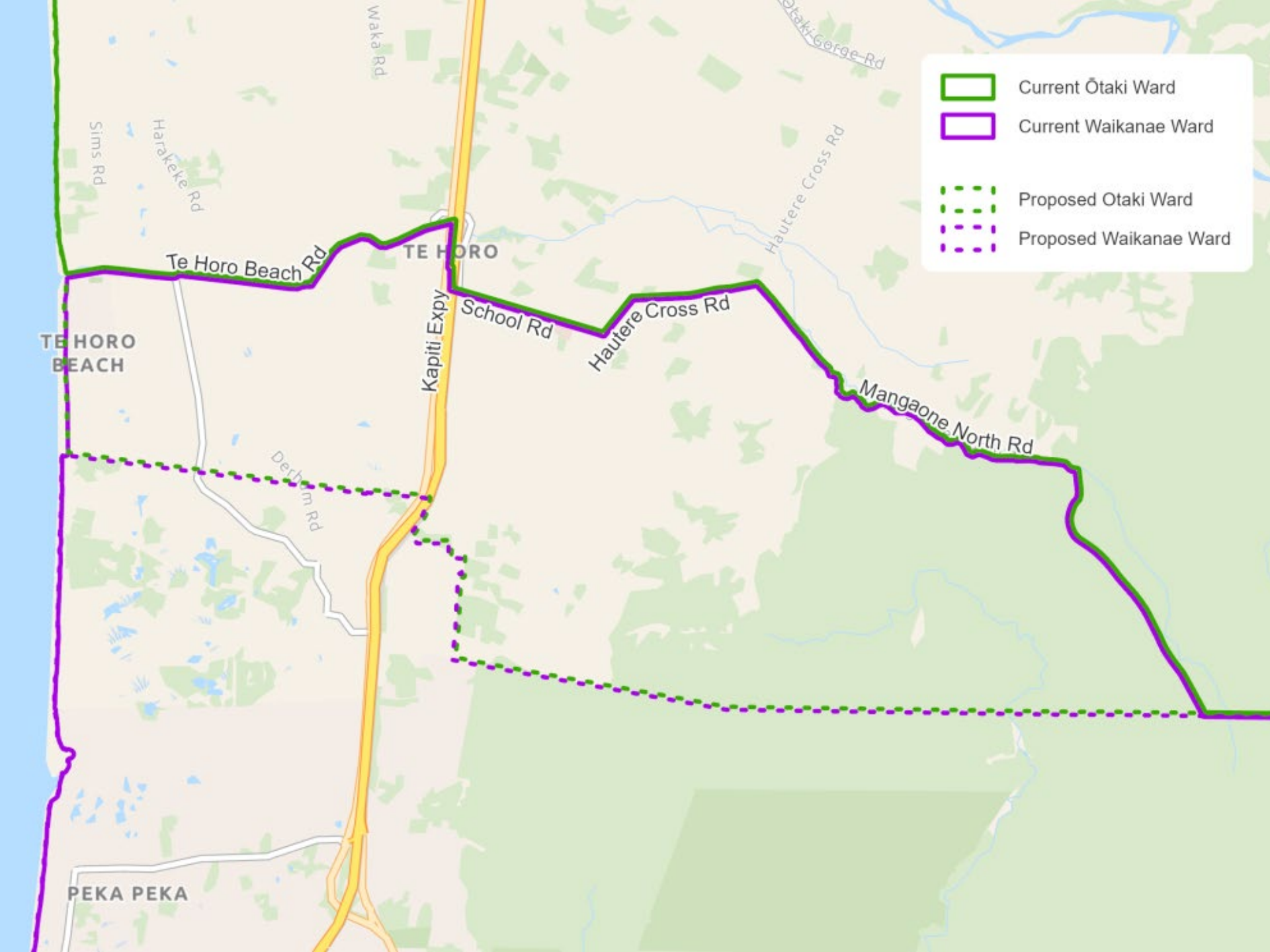
Option 2C

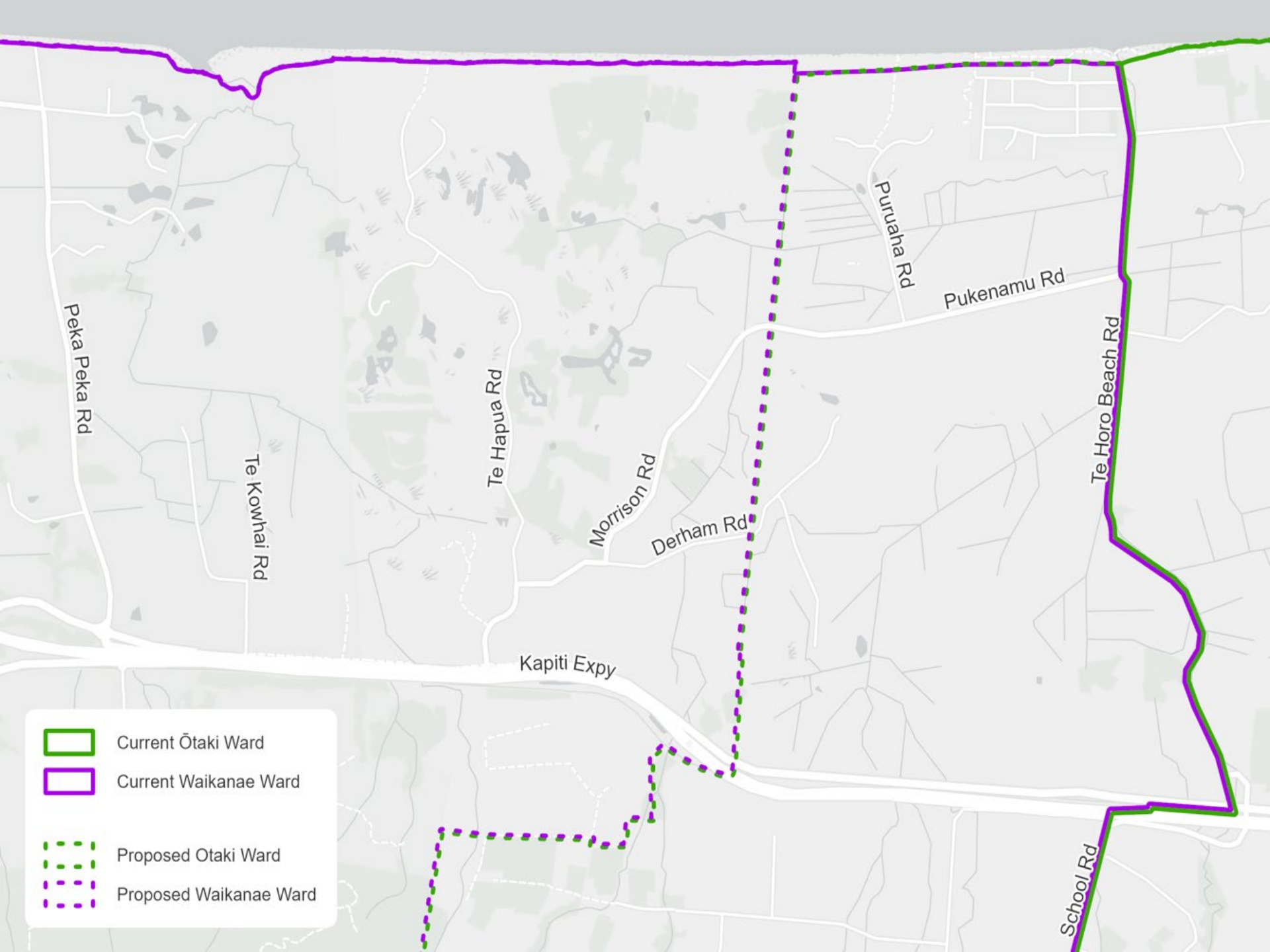
- Ötaki Ward
- Paekākāriki-Raumati Ward
- Paraparaumu Ward
- Waikanae Ward





Ward Boundaries 2022

- Ötaki Ward
- Paekākāriki-Raumati Ward
- Paraparaumu Ward
- Waikanae Ward







-  Current Ōtaki Ward
-  Current Waikanae Ward
-  Proposed Otaki Ward
-  Proposed Waikanae Ward

Population Data (Pre-2022)

Ward	Māori Electoral Population	General Electoral Population	Members	Population per Member	Difference from Quota (7,647)	% Difference from Quota
Ōtaki General Ward	N/A	8,330	1	8,330	683	8.93% (underrepresented)
Paraparaumu General Ward	N/A	22,900	3	7,633	-14	-0.18% (overrepresented)
Waikanae General Ward	N/A	14,000	2	7,000	-647	-8.46% (overrepresented)
Paekākāriki-Raumati General Ward	N/A	8,300	1	8,300	653	8.54% (underrepresented)
Kāpiti Coast Māori Ward	4,930	N/A	1	4,930	N/A	The quota requirement does not apply to the Māori ward.
District Total	4,930 (Māori electoral population) + 53,540 (General electoral population) = 58,470					