

Chairperson and Community Board Members
WAIKANAE COMMUNITY BOARD

31 JULY 2017

Meeting Status: **Public**

Purpose of Report: For Decision

WAIKANAE TOWN CENTRE CAR PARKING

PURPOSE OF REPORT

- 1 This report sets out further amendments to the proposed car parking restrictions in Waikanae Town Centre as approved by the Waikanae Community Board and Kāpiti Coast District Council (Council) and seeks the Community Board's approval to the changes.
- 2 The further amendments to the proposed parking restrictions only apply to the car park area adjacent to Whakarongotai Marae.

DELEGATION

- 3 The Council has the authority to declare the time restrictions being sought under the Traffic Bylaw, Section 5 (see legal considerations in this report).

BACKGROUND

- 4 During consultation for the Waikanae Town Centre Upgrade feedback was received regarding the current parking problems experienced in the parking areas at the town centre. The issues included not being able to find a parking space, overstay issues associated with commuter parking and a general lack of parking spaces.
- 5 Following this feedback, a parking study was initiated and developed into a parking strategy for both Paraparaumu and Waikanae Town Centres. This parking strategy recommended a staged approach:
 1. manage existing assets;
 2. improve existing assets;
 3. implement automated parking monitoring regime;
 4. charge for parking.
- 6 The first two stages of the Strategy were developed further with stakeholder engagement which included representation from the following:
 1. Iwi Town Centres Working Group;
 2. Destination Waikanae;
 3. Waikanae Community Board;
 4. Chamber of Commerce;

5. Greater Wellington Regional Council (GWRC);
 6. Council Officers – Parking Enforcement.
- 7 Through the workshops and development of these stages, the existing parking provision, main key parking generators, and the demand groups that must be accommodated were identified and determined.
 - 8 Two options for car parking were presented to the Waikanae Community Board meeting on 21 June 2016. The options proposed changes to restrictions in the car park areas listed below:
 - adjacent to the Waikanae Medical Centre;
 - fronting Countdown Supermarket;
 - to the rear of Shoreline Cinema;
 - adjacent to the Whakarongotai Marae.
 - 9 The Waikanae Community Board discussed both options at the 21 June 2016 meeting and recommended that Option 2 (as set out in report IS-16-1925) be approved. The resolution is as follows:

That the Waikanae Community Board approves the changes to car parking restrictions in Waikanae Town Centre as set out in paragraphs 23-26 of report IS-16-1925.

- 10 The option approved by the Waikanae Community Board was then presented to the Council meeting on 18 August 2016. The Council discussed the proposed parking restrictions and recommended that Option 2 be approved. The resolution is as follows:

That the Council approves the changes to car parking restrictions in Waikanae Town Centre as set out in paragraph 12 and Appendix 2 of report IS-16-1962.

- 11 Both Council and the Waikanae Community Board were clear in approving the parking restrictions that they should not be implemented until the new park and ride car park (located to the south of the Whakarongotai Marae) was opened for use. Construction of the park and ride is incomplete and therefore the proposed parking changes have not been implemented. At the time of writing this report it is understood that GWRC intend to open the park and ride car park around the beginning of August 2017. The Town Centre parking changes will be implemented approximately 6 weeks after the opening of the park and ride facility.
- 12 The parking option recommended for approval for the car park adjacent to Whakarongotai Marae was as follows:

Time Restriction(Minutes)/ Type	Existing	Proposed	Difference
Unlimited/Regular	54	0	-54
Unlimited/Disabled	2	0	-2
Unlimited/Police	1	1	0
240/Regular	0	20	+20
120/Regular	0	34	+34
120/Disabled	0	2	+2
60/Regular	8	0	-8
30/Regular	0	8	+8
5/Loading	5	5	0
Total	70	70	0

- 13 Over the last year, Council staff have had discussions with local business owners and the Whakarongotai Marae Trustees with regard to these approved parking restrictions.
- 14 Local business owners and the Whakarongotai Marae Trustees have expressed concern over the removal of all day parking in the parking area around the Marae.
- 15 In view of these concerns the proposed parking restrictions have been revisited and amended to provide eight hour parking restrictions on the 38 parking spaces in the area close to Whakarongotai Marae. Previously this parking area as approved contained 18 no. 2hr (fronting the Marae boundary wall) and 20 no. 4hr restricted parking spaces opposite.

ISSUES AND OPTIONS

Issues

- 16 The proposed changes to the approved parking restrictions will allow parking between the hours of 8am-6pm Monday to Friday. This will allow long term parking for staff who work in the town centre, the Whakarongotai Marae and other visitors. This will not prevent parking by commuters, but it is hoped that this will be minimal as the new park and ride car park will be open to use prior to these changes being implemented.

PROPOSED OPTION

- 17 The proposed changes to the approved parking restrictions only apply to the car park area close to the Whakarongotai Marae, all other parking restrictions as previously approved are unchanged. The proposed changes are detailed in Appendix 1 and are as set out as follows:

Time Restriction (Minutes)/Type	Number of Spaces	
	Existing	Proposed
Unlimited/Police	1	1
Unlimited/Regular	54	0
Unlimited/Disabled	2	0
60/Regular	8	0
8hr/Regular	0	38
120/Regular	0	16
120/Disabled	0	2
30/Regular	0	8
5/Loading	5	5
Total	70	70

CONSIDERATIONS

Legal considerations

- 18 The Traffic Bylaw specifies the delegation and procedures to be followed when imposing time restricted parking.
- 19 Section 5 of the Bylaw states that:

5. General

5.1.1.1 *The Council may, by a publicly notified resolution, impose such prohibitions, restrictions, controls, or directions concerning the use by traffic of any road or other area controlled by the Council, as are permitted by any relevant enactment.*

5.2 Any resolution may:

- (a) *Be made in respect of a specified class, type or mode of transport, and may be revoked or amended by the Council.*
- (b) *Be expressed or limited to apply only on specified days, or between specified times, or in respect of specified event or classes of events, or be limited to specified maximum periods of time.*
- (c) *Also, where appropriate, prescribe, abolish or amend fees, whether annual, hourly or otherwise, as the Council may reasonably require for any parking space or residents' parking scheme; and may prescribe the methods of displaying appropriate receipts for payments, or other authority to use or park in such spaces or areas.*

- (d) *Be made in respect of any defined part of a road, including, any defined footpath or lane.*
- 5.3 *The Council may, by a publicly notified resolution rescind, amend or vary any resolution made pursuant to clause 5.2.*
- 5.4 *The Chief Executive shall authorise the marking of roads and erection of signs on any road or public carpark as necessary to give effect to any resolution made pursuant to clause 5.2.*
- 20 Section 7 of the Bylaw states that:

7 Time Limited Parking Areas

7.1 The Council may by, a publicly notified resolution:

- (a) *Designate any land or road or part thereof under the control of the Council as a Time Limited Parking Area, and specify that the designation shall only apply during certain hours of the day and/or certain days of the week.*
- (b) *Declare that any time limited parking area shall on certain hours of the day and/or days of the week be set aside as a clearway.*

7.2 The Council shall, in the resolution, specify the maximum duration of time a motor vehicle may be parked within the Time Limited Parking Area.

Financial considerations

- 21 The Council currently has an existing contract with an external provider for noise and parking requirements monitoring. The existing provisions of the contract can accommodate the additional monitoring work. The Council is looking to replace the external provider with an in-house service, and this too can accommodate additional monitoring.
- 22 Should enforcement action be required, there is potential for some additional revenue which may offset additional costs that may result. This would only be likely for the initial period of the new enhanced enforcement regime as it would be likely that more rigorous enforcement will result in greater compliance in the long term.
- 23 Changes to existing road markings and signs will be funded from existing budgets.

Tāngata whenua considerations

- 24 Whakarongotai Marae Trustees have discussed the parking changes with Council and have actively sought longer term parking in the area adjoining the Marae. Council staff have amended the proposals to accommodate longer term parking and the parking changes set out in this report have been formally accepted in writing by the Whakarongotai Marae Trustees.

SIGNIFICANCE AND ENGAGEMENT

25 This matter has a low level of significance under Council's Significance and Engagement Policy.

Consultation already undertaken

26 The Council has recently sought community views through a range of stakeholder engagements both for the parking strategies and the Town Centres Projects. Therefore, the engagement plan is now about advising the community about Council's decision, and providing information to explain that decision.

Publicity

27 A communications plan has been developed to inform the community of the changes following approval of the proposals. This is in the form of targeted communications which will be carried out separately from the formal public notification which has to be carried out under Council's Traffic Bylaw. There will be a two week grace period following implementation of the parking changes, whereby warning notices will be issued for overstay parking offences instead of parking fines.

RECOMMENDATION

28 That the Waikanae Community Board request Council to approve the further changes to car parking restrictions in Waikanae Town Centre in as set out in paragraphs 12, 17 and Appendix 1 of report IS-17-218.

Report prepared by

Approved for submission

Approved for submission

Neil Trotter
**Roading Network Planning
Team Leader**

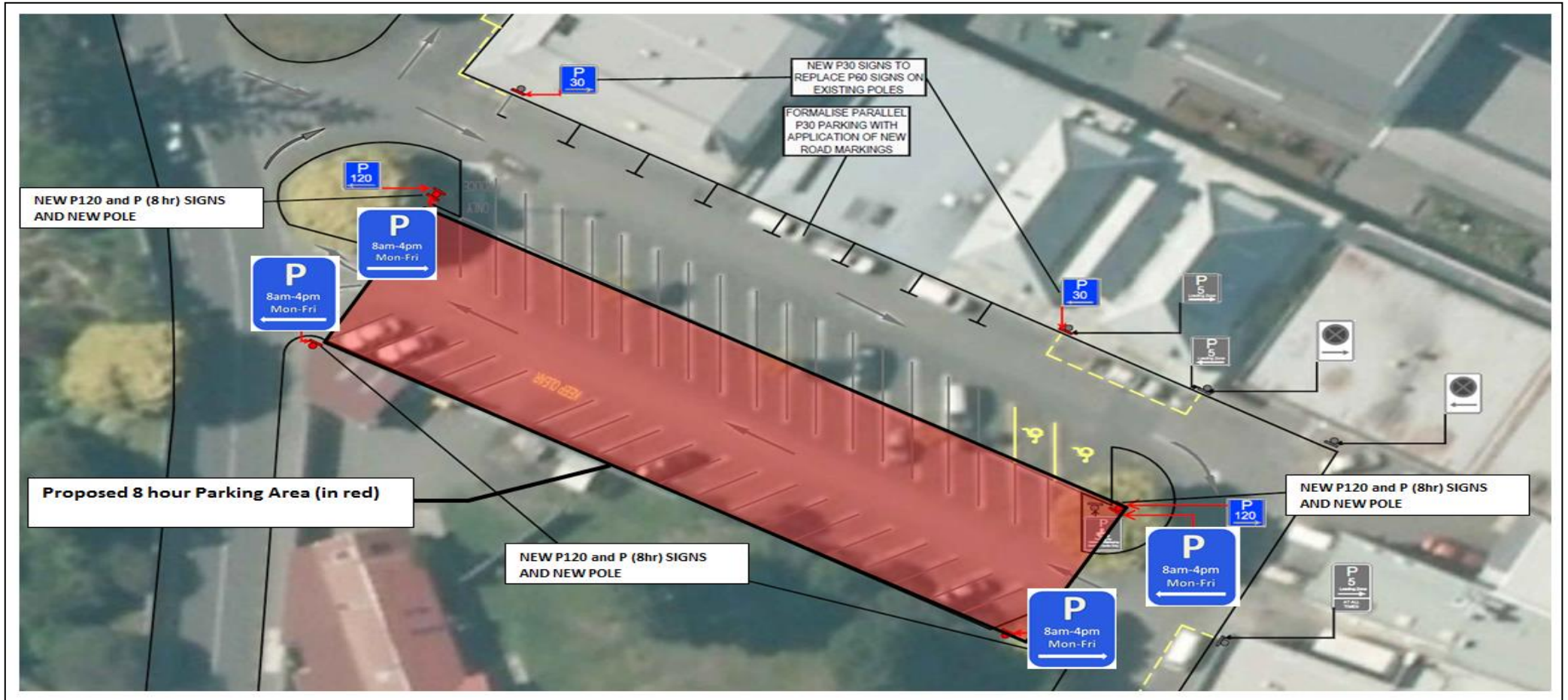
Kevin Currie
**Group Manager
Regulatory Services**

Sean Mallon
**Group Manager
Infrastructure Services**

ATTACHMENT

Appendix 1: Further parking changes – Car Park Adjacent to Whakarongotai Marae

Appendix 1 - Further Parking Changes – Car Park Adjacent to Whakarongotai Marae



Appendix 1 - Further Parking Changes – Car Park Adjacent to Whakarongotai Marae

