



Vision Raumati

Summary Report

November, 2024

Cover image credit: <https://www.nickballesteros.com>

Vision Raumati — Summary Report

Version:	V1.0
Date:	5 November 2024
Author(s):	Jared Bothwell

Contents

Contents	3
1 Executive summary	5
1.1 Why Vision Kāpiti 2060?	5
1.2 Overview of Vision Raumati engagement and feedback.....	5
1.3 Central Themes.....	9
2 A summary of all feedback on Vision Raumati.....	11
2.1 Place.....	12
2.2 People	21
2.3 Partnership.....	38
3 Data analysis methodology.....	40
3.1 Survey data analysis.....	40
3.2 Key findings analysis	40
3.3 Reporting.....	40
Phase One: Gathering initial views	41
4 Phase 1 - Vision Raumati survey	41
4.1 Why Raumati? What's your connection to Raumati?	42
4.1 How does it make you feel when you come home to the village?.....	44
4.2 How do you get to/around Raumati? & is this different to how you would want to, in an ideal world?	45
4.3 What do you love most about Raumati?	46
4.4 What do you see as being most distinctive about the village?	48
4.5 How would you like Raumati to look and feel?	49
4.6 How do you want Raumati to be known by those who don't have the privilege of living here?	52
4.7 What kind of community spirit would we like to see and how would we like this to manifest?	54
4.8 What would you love for children? For the elderly?.....	56
4.9 If you had a generous pot of money, what is it that would make all the difference?.....	59
Phase Two: Testing what we have heard so far.....	62
5 Phase 2 - Vision follow up survey	62
5.1 Does this reflect what's important to you?	62
5.2 Is there anything missing?.....	62
Broader community engagement.....	63

6	Relevant Insights from the Long-Term Plan Process.....	63
6.1	Raumati Village Refresh Project.....	63
6.2	Infrastructure and Maintenance.....	63
6.3	Stormwater Management	64
6.4	Financial Management and Rates.....	64
6.5	Housing and Land Use	64
6.6	Community Initiatives.....	64
6.7	Environmental Concerns	64
7	Takutai Kāpiti	65
7.1	What do you value most about living in this area?	65
7.2	How important is our coastline to you?	67
7.3	How concerned are you about coastal hazards like erosion and flooding, and why?	72
7.4	How do you think our coastline should be protected?	75

1 Executive summary

1.1 Why Vision Kāpiti 2060?

A clear district-wide vision will help guide planning, decision making, programmes, services, and advocacy, for decades to come.

Elected members want to hear from their communities, about what matters most, what change people want to see and their aspirations for the future of our District.

The first stage is to develop a Vision for the District and its underlying communities.

This will be followed by two further stages:

- Identifying and testing pathways and priorities for achieving our Vision; and, finally
- Developing a blueprint for action, mapping out our key steps and moves to realise our Vision.

Once complete, the Vision and blueprint will outline what things will be prioritised over the next 30 years (to 2060), and how Council will work with its iwi partners, central and local government, and key stakeholders to achieve our collective Vision.

This process will replace the Local Outcomes Statements developed across the district from 2007 - 2017.

1.2 Overview of Vision Raumati engagement and feedback

The Vision Raumati Project was initiated prior to the wider Vision Kāpiti process and has inspired some of its approach. The leadership shown by the Raumati community through this process has been incredibly valuable. The Community Board has worked to capture feedback from the Raumati community to help shape and refine Vision Raumati. This has occurred across two phases of engagement.

Phase One: Gathering initial views

From March 2022 to May 2024 feedback was captured from local Raumati residents through:

- An online survey gathering insights into what makes Raumati special and to identify the community's current and future needs and aspirations was undertaken from March – December 2022. The survey consisted of 10 questions and was advertised through local networks and social media to ensure broad participation. A summary of key themes from feedback was provided in 2023. 73 responses with 708 feedback points

- An additional online survey was repeated from November 2023 – May 2024 to capture insights and feedback for Raumati South. 59 responses with 510 feedback points

The two surveys were administered to capture the unique perspectives of residents across the wider Raumati area. Both surveys featured identical questions to maintain consistency. The data and themes collected across this period, as well as previous data from the Local Outcomes Statements (2007) and other recent local strategic work have been merged to provide a comprehensive overview of the Raumati community's feedback.

This feedback was summarised and presented to local communities for further testing as part of Phase Two. This included a detailed report which summarised feedback from all sources, and feedback received on local survey questions.

Phase Two: Testing what we have heard so far

From June to July 2024 the summary of feedback from Phase One was shared through the Council led process to test whether what had been captured so far reflected what was important and if there was anything missing.

Further feedback was captured from engagement during this period including:

- An online survey testing if what was captured so far reflects what's important and if there is anything missing. 1 response with 1 feedback point
- Other Raumati Community Board engagement with the community 113 responses with 164 feedback points

Broader community engagement

In addition to the above engagements, the Community Board has sought to engage and seek feedback with local residents through a number of other ways including:

- Partnering with local groups such as the Kāpiti Business Chamber, Low Carbon Kāpiti, and Raumati Village
- Collecting ideas and sparking conversations via a stand-alone website and Facebook page
- Public meetings held at the Raumati Bowling Club (approximately 35 attendees), Weka Park (approximately 70 attendees), and Raumati South Residents' Association Annual General Meeting (about 30 attendees).
- Sessions with 2 year 9 classes at Kāpiti College
- Hosting of 'our vision for Raumati event with over 600 attendees.

Many conversations with residents and stakeholders also helped inform the thinking for the Raumati Vision Project, even where feedback was not specifically captured.

In addition to feedback on the Vision process, several recent community engagements have provided input on what's missing or important for the Raumati. By incorporating these supplementary sources, we gained a more comprehensive understanding of community priorities and concerns. This multi-faceted approach allows us to identify recurring themes across different engagement processes, providing a robust foundation for the future. This includes:

- | | |
|---|--|
| • Long Term Plan 2024-2034 feedback | Key insights from 371 responses with 1,598 feedback points |
| • Feedback on values received in the Takutai Kāpiti Project | 336 responses with 1,758 feedback points |

The inclusion of Long-Term Plan insights offers valuable context on infrastructure priorities, financial considerations, and community initiatives. The Takutai Kāpiti feedback provides crucial perspectives on coastal management and environmental priorities. Together, these additional sources enrich and validate the themes identified in the primary Vision Raumati engagement, ensuring a holistic view of community aspirations.

This report

This report provides an overview of all feedback shaping Vision Raumati.

This includes:

- Consolidated findings from all feedback.
- A summary of the 'Phase One' local survey results.
- A summary of 'Phase Two' feedback on what's important and gaps.
- A summary of what we heard from additional information sources, including:
 - Long-Term Plan 2024-34 consultation, which covered topics such as infrastructure priorities, financial management, housing, and community initiatives.
 - Takutai Kāpiti coastal adaptation project, which focused on coastal hazards, community values related to the coastline, and preferences for coastal protection strategies.

The engagement data analysis has been structured using the Council's Doughnut Economic Framework. This model provides a holistic view of the community's well-being, considering social, cultural, environmental, and economic factors.

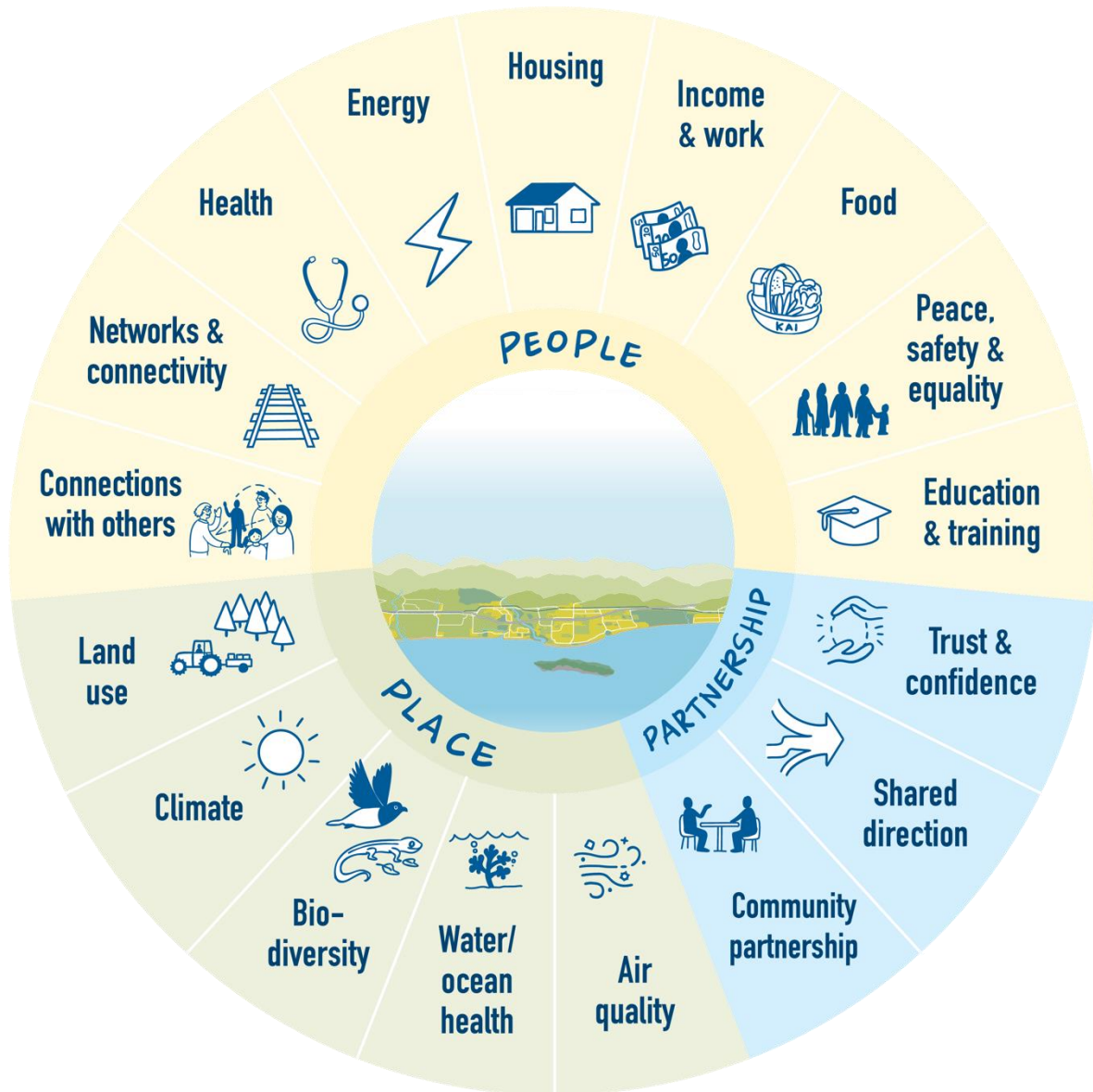


Figure 1: The Doughnut Economics Model

1.3 Central Themes

This section summarises the key findings that emerged from the community engagement process. It highlights the dominant priorities and aspirations expressed by the residents of Raumati across various domains of Doughnut Model.



Āhurangi | Climate: Residents appreciate the warm weather and sunshine, recognising the positive impact on outdoor experiences and overall lifestyle. However, there is a mix of views on climate change, with some expressing concern about future impacts and others sceptical of scientific projections and modelling.



Aiowhaitika mō te tangata | Peace & Safety: The feedback emphasises fostering happiness and contentment by maintaining a cosy, inclusive environment. Residents prioritise pedestrian-friendly spaces, secure bicycle storage, safer road crossings (especially for children and the elderly), and reduced speed limits. They cherish the relaxed, village-like ambience close to nature.



Te hononga ki ētahi atu | Connections with others: Residents value strong community spirit, safety, and access to amenities. They appreciate the friendly, close-knit atmosphere with locally owned shops. Community events like street BBQs and markets are pivotal for nurturing a supportive environment where everyone feels welcome. There's a desire for more inclusive spaces and activities that cater to diverse age groups.



Hanga Whare | Housing: Residents desire more affordable and accessible housing options while preserving the village feel. They prefer medium-density housing that maintains green spaces over high-density developments, which are seen as unfit for the village atmosphere.



Hauora | Health: The community seeks better healthcare access, particularly for the elderly, including comprehensive services, improved infrastructure, and mental health support. There are strong calls for local healthcare facilities and services to meet growing community needs. This includes increased funding for youth programs and enhanced social services.



Hauora Awa/Moana | River/Ocean Health: Residents highly value proximity to the beach and ocean, seeing it as central to local identity. There's strong support for maintaining clean waterways and beaches, with concerns about water quality and stormwater management.



He Waka eke noa/A Shared Waka | Community Partnership: Feedback shows a strong desire to enhance community cohesion through communal activities and events. Residents want to preserve local charm, the laid-back vibe, and low-density environment. Many

prefer it remain relatively unknown to avoid over-commercialisation. There are concerns about governance and decision-making processes, particularly around coastal adaptation planning, with calls for more transparent and inclusive community engagement.



Konorau Koiora | Biodiversity: Residents deeply appreciate the natural surroundings, beaches, parks and close connection to the environment. They support urban beautification, community gardens, and tree planting to preserve natural charm and sustainability. There's particular emphasis on dune restoration and management and protecting wildlife habitats.



Mātauranga | Education & Training: The community values its schools as integral to a family-friendly environment. Residents call for further educational enrichment through outdoor experiences and nurturing creativity. There's also interest in environmental education and learning about coastal processes.



Ngā Hono | Networks & Connectivity: Priorities include enhancing pedestrian accessibility, improving walkways, cycleways and bridleways, and ensuring safer roads. Public transport enhancements and better connectivity between the village, beach, and other key areas are also important. There's a strong desire for a more integrated and multimodal transport network.



Ohunga | Income & Work: Residents want to expand retail and hospitality while preserving village charm. Key priorities include supporting local businesses, adding community events and markets, and developing Raumati as a unique tourist destination. There are calls to address vacant properties and improve the town's overall appeal to boost the local economy.



Wai | Water: Residents prioritise addressing water quality issues and improving stormwater management. There's concern about the impact of development on water infrastructure and calls for better maintenance of waterways.



Whakamahi/Hauora Whenua | Land Use & Quality: The community wants to revitalise its spaces like the old swimming pool building and waterfront into vibrant, multifunctional hubs. Residents prioritise sustainable development, climate change adaptation, and maintaining visual appeal. There are ongoing debates about coastal protection measures, with mixed views on strategies like seawalls and managed retreat.

2 A summary of all feedback on Vision Raumati

This section provides more detail on views for areas of the Doughnut Framework, representing key needs for the community. In this section, the most common topics that emerged from the community feedback are highlighted for each theme, along with supporting quotes or discussion points. These insights shed light on the Raumati community's values, priorities, and concerns, offering valuable guidance for the Kāpiti Coast District Council's decision-making processes and future planning efforts.



2.1 Place

Below is a summary of the key findings related to 'Place'.



Āhurangi | Climate feedback revealed diverse views on environmental and climate issues. Residents appreciated local natural assets but expressed varying concerns about climate impacts. Some emphasised adaptation strategies, whilst others were sceptical of scientific modelling. Environmental health, including air and water quality, was a recurring theme. Infrastructure needs, such as waste management and seawall upgrades, were noted. Biodiversity protection and food resilience also featured. The consultation highlighted a range of opinions on climate change, from prioritisation to scepticism.

The most common themes that emerged from community feedback were:

Scepticism of scientific modelling and scenarios

Many residents express strong scepticism towards the scientific modelling and scenarios used to assess coastal hazards and climate change impacts. They criticise the use of what they perceive as "extreme" or "worst-case" scenarios, calling it scaremongering and implausible. Some argue that the models are uncalibrated, flawed, or ignore important factors like vertical land rise

and existing seawalls. There are calls for more balanced assessments, consideration of alternative scientific views, and concerns that overestimating risks could unnecessarily harm property values and community well-being.

Efficient waste management and recycling systems

Residents express a desire for improved waste management and recycling in Raumati. Suggestions include implementing streetside recycling bins, providing residential bins with lids to prevent rubbish from entering the sea, and organising community beach clean-ups. There's a call for more rubbish bins, particularly in areas like Queen Elizabeth Park and Rosetta Road. Some propose a unified rubbish collection system to reduce the number of trucks on the roads.

Enjoy the local climate and weather

The community highly values the pleasant microclimate, characterised by abundant sunshine, warm temperatures, and cooling sea breezes. Residents appreciate the area's stable weather patterns, which contribute to an enjoyable coastal lifestyle. Many express their love for the beautiful sunsets, clear sunny days, and overall favourable climate compared to nearby regions. Some concerns are raised about extreme weather events and climate change impacts, but overall, the local climate is considered a major asset of living in Raumati.

Other key themes included:

- Enhance natural spaces (e.g. though improved walkways, cycleways and bridleways).





Hauora Awa/Moana River/Ocean Health

Hauora Awa/Moana | River/Ocean Health related feedback highlighted residents' strong connection to coastal and waterway areas. Many valued proximity to beaches, the ocean, and rivers. Concerns were raised about coastal protection, including seawall maintenance and effectiveness, alongside support for improved defences. Stormwater and waste management emerged as key issues, with worries about flooding, water quality, and pollution. Some residents expressed concern about human interference with natural processes and erosion. Specific local concerns included the Wharemauku Stream, Raumati South seawall, and inland water table issues. Overall, the community emphasised the importance of maintaining safe, clean aquatic environments whilst balancing protection and natural processes.

The most common themes that emerged from community feedback were:

Proximity to the seaside, beaches and the sea

Residents overwhelmingly value the coastal location, with easy access to beaches being a primary draw. The seaside lifestyle is cherished for its relaxing atmosphere, recreational opportunities, and positive impact on wellbeing. Many appreciate the ability to walk from their homes to the beach, enjoying activities like swimming, fishing, and coastal walks. The sandy, safe beaches are particularly valued for families. The sea views, sunsets, and connection to nature are frequently mentioned as key benefits. Overall, proximity to the sea is seen as central to the character and appeal of Raumati.

Support for improved and additional seawalls

Many residents strongly support maintaining and improving seawalls as a primary defence against coastal hazards. There are calls for consistent, well-designed, and professionally engineered seawalls along the coast. Residents emphasise the need for proactive maintenance and upgrades, with some advocating for higher walls to accommodate future sea level rise. There's a desire for a coordinated approach rather than piecemeal private efforts, and for seawalls to incorporate public amenities like walkways where possible.

Support for improved stormwater management

Residents express significant concern about stormwater management and advocate for improvements. Many call for better maintenance of existing infrastructure, including regular clearing of drains, streams, and waterways to prevent flooding. There's a desire for enhanced stormwater systems to cope with increased rainfall intensity and population growth. Some suggest considering the impact of new high-density developments on stormwater capacity. Residents emphasise the need for a holistic approach, addressing inland drainage issues as well as coastal defences. Overall, there's a strong push for proactive stormwater management to improve flood resilience.





Kanorau Koiora Biodiversity

Kanorau Koiora | Biodiversity related feedback shows that the community highly values the natural environment, emphasising proximity to beaches, waterways, Kāpiti Island, mountains, and wetlands. There's strong support for protecting and enhancing these assets, including dune restoration, increased planting, and wildlife habitat preservation. Residents enjoy local parks, reserves, and birdwatching opportunities. Concerns were raised about current planting processes and impacts on specific areas like Queen Elizabeth Park and dunes. The community seeks a balance between ecological preservation and protection measures, highlighting the importance of regenerating native biodiversity and appreciating coastal habitats and plant species.

The most common themes that emerged from community feedback were:

Protect beaches and waterways and green Kāpiti

Residents highly value the natural environment, including beaches, waterways, parks, and green spaces. There's strong support for protecting and enhancing these areas through dune restoration, native planting, and ecological corridors. Many emphasise the importance of Queen Elizabeth Park and wetlands for biodiversity and community wellbeing. Residents want to preserve the area's coastal character and connection to nature, with calls for more tree planting, fruit trees, and community gardens. There's a desire to balance development with environmental protection, maintaining green spaces and wildlife habitats whilst improving sustainable access and enjoyment for all.

Proximity to nature

Residents deeply value their proximity to nature, highlighting the area's unique blend of coastal, bush, and mountain environments. The easy access to beaches, Queen Elizabeth Park, wetlands, and the Tararua Range are frequently cited as key attractions. Many appreciate the abundance of wildlife, particularly birds, and the opportunity for outdoor activities like walking, cycling, and swimming. The natural surroundings are seen as crucial for mental wellbeing and quality of life.

Promote our natural assets to visitors

Residents envision Kāpiti as a destination that showcases its natural beauty and relaxed coastal lifestyle. They want to promote the area's beaches, parks, and Kāpiti Island as key attractions for visitors. Many suggest highlighting the region's outdoor activities, such as swimming, cycling, and walking trails. Residents see potential in promoting Kāpiti as an eco-friendly destination, leveraging its unique blend of seaside charm and natural landscapes to attract tourists.

Other key themes included:



- Enjoy visiting local parks and reserves
- Support for dune restoration and management
- Importance of wildlife observation and birdwatching.





Wai | Water related feedback highlighted significant concerns regarding water quality and supply. Residents expressed a desire for improved water services, emphasising the need to address existing issues affecting water quality. The impact on water supply was a notable worry, suggesting potential challenges in meeting community needs. Overall, there's a clear call for authorities to enhance water management practices, ensuring safe, reliable access to clean water for all residents whilst addressing any current or anticipated problems with water infrastructure and quality.

The most common theme that emerged from community feedback were:

Address concerns around water quality

Residents express significant concerns about water management and quality in Raumati. There are worries about potential pollution of the water supply and the need for improved sewerage systems. There's particular mention of addressing issues with the sewerage pipe along the beach. Additionally,

there's a call for better maintenance of water infrastructure and upgrading of core water services. Residents also desire more water fountains at the beach and shops. Overall, there's a strong emphasis on the need for clean, well-maintained water systems to support the community.





Whakamahi/Hauora Whenua Land Use & Quality

Whakamahi/Hauora Whenua | Land Use & Quality related feedback indicates varying views on coastal management and urban development. While some were unconcerned, many worried about erosion, flooding, and property protection. The coastline's importance to local identity was emphasised. Opinions on managed retreat were divided, with some favouring coastal defence. Development concerns included high-density housing, particularly in coastal areas, and building in high-risk zones. The need to balance intensification with character preservation was noted. Overall, there's a call for a balanced, case-by-case approach to coastal protection and development, considering infrastructure needs and appropriate land use.

The most common themes that emerged from community feedback were:

Mixed concern about erosion and flooding

Residents express a wide range of views regarding coastal erosion and flooding in Raumati. Some are extremely concerned about the potential impacts on property and infrastructure, citing visible changes to beach levels and access. Others are less worried, believing natural processes will maintain the coastline or that their properties are sufficiently

elevated or set back. Many emphasise the need for well-designed seawalls and other protective measures. There's significant scepticism about the severity of threats, with some residents questioning the scientific basis for concerns and others viewing earthquakes or tsunamis as greater risks.

Concern regarding high density housing

Residents express significant concern about potential high-density housing developments in Raumati. Many emphasise the importance of maintaining the area's village atmosphere and low-rise character, fearing that multi-storey or high-density builds could erode the community's charm. There's a strong desire to preserve green spaces and avoid 'cookie-cutter' developments. While some acknowledge the need for more affordable housing, most prefer sensitive, well-considered medium-density options that fit with the existing character. Concerns are raised about the impact of intensification on infrastructure, particularly stormwater systems, and the potential loss of the area's coastal aesthetic.

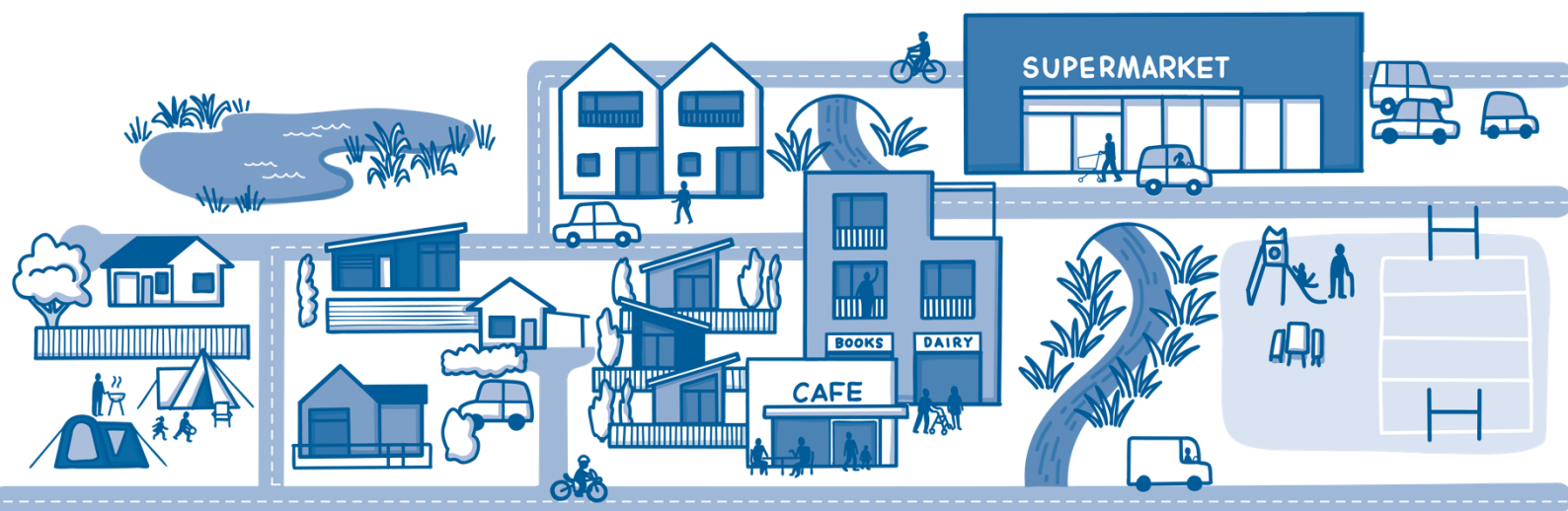
Balance intensification with character preservation

Residents express a desire to balance potential intensification with preserving the unique character. They stress the need to protect green spaces and avoid overdevelopment. Some suggest focusing intensification around transport hubs or specific areas while preserving the coastal village feel. Overall, there's a call for careful urban planning that respects local identity while addressing housing needs.

Other key themes included:



- Opposition to managed retreat.



2.2 People

Below is a summary of the key findings related to 'People'.



Aiowhaitika mō te tangata Peace & Safety

The feedback related to Aiowhaitika mō te tangata | Peace & Safety emphasised the peaceful, relaxing atmosphere and natural beauty as important to the community. Safety is a key priority, with appreciation for the secure environment, particularly for children along the coastline. There's a desire to maintain and enhance safety through improved animal control, safe driving speeds, and a pedestrian-friendly environment. The community cherishes the quiet lifestyle, absence of heavy traffic, and sense of space and freedom. Some concerns were raised about maintaining this peaceful living, with calls to increase police presence and address issues like drug use and vape sales. Overall, residents appreciate their ability to have a say in local matters.

The most common themes that emerged from community feedback are:

Relaxed and peaceful living

Residents consistently highlight the relaxed and peaceful atmosphere as a key attribute. Many describe feeling as if they're on holiday at home, appreciating the quiet, laid-back lifestyle. The area is valued for its sense of calm, connection to nature, and escape from city bustle. Residents enjoy the slower pace, lack of

congestion, and the ability to easily access amenities while maintaining a peaceful environment. The combination of beach proximity, green spaces, and village ambiance contributes to a sense of tranquillity and well-being that residents highly prize.



Safety and security

Residents frequently mention safety and security as key aspects of life in Raumati. Many feel the area offers a safe environment for families, children, and the elderly. There are calls for improved pedestrian and cycling safety, particularly around the village centre and near schools. Some express concerns about traffic speeds and road safety. Residents desire well-lit, accessible pathways and community spaces. While generally feeling secure, there are mentions of addressing petty crime and vandalism. Overall, maintaining and enhancing safety is seen as crucial to preserving the community-oriented, family-friendly character.

Other key themes included:



- Improve animal safety and control
- Ability to have say and vote
- Absence of traffic.

Recognition of natural beauty and views

Residents of Raumati deeply appreciate the area's natural beauty and stunning views. Many highlight the picturesque sunsets, vistas of Kāpiti Island, and the scenic coastline as significant attractions. The beach is valued not only for recreation but also for its aesthetic qualities, including beautiful shells and driftwood. The raw, unspoiled beauty of the area is cherished, with many expressing a desire to preserve these natural assets and the positive impact they have on quality of life.





Te hononga ki ētahi atu Connections with others

Feedback related to Te hononga ki ētahi atu | Connections with others highlighted that residents cherish their thriving, connected community with its small-town character and village atmosphere. They value the friendly, welcoming environment and strong sense of belonging. The community appreciates local events, cultural activities, and recreational opportunities, including beach visits, water sports, and outdoor activities. There's a desire for more inclusive spaces, youth-focused facilities, and improved public amenities. Residents emphasise the importance of maintaining the area's unique identity, historical significance, and artistic culture. The community seeks a balance between preserving its relaxed lifestyle and fostering progress, with calls for enhanced recreational areas, community hubs, walkways, cycleways and bridleways to cater to diverse age groups and interests.

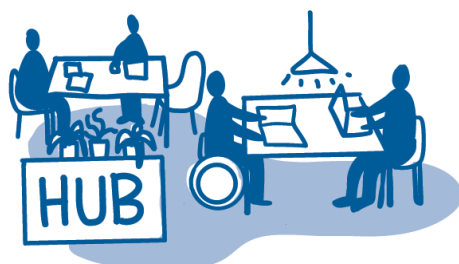
The most common themes that emerged from community feedback are:

Community spirit and connectedness

Residents of Raumati highly value the strong sense of community and connectedness in the area. Many describe a friendly, welcoming atmosphere where neighbours know each other and support local businesses. There's a desire for more community events, gathering spaces, and opportunities for intergenerational

interactions. Residents appreciate the village feel and the mix of people, from young families to retirees. They emphasise the importance of inclusivity, diversity, and supporting one another. Many see the community spirit as a key factor in their quality of life and want to preserve and enhance this aspect of Raumati character.

Community
Hubs and
shared
workspaces



Village character and small size

Residents consistently praise the village character and small size as key attributes. They value the intimate, laid-back atmosphere and the ability to access amenities within walking distance. The compact nature of the village centres is seen as fostering community connections and a holiday-like feel. Many express a desire to maintain this small-scale charm, resisting over-development or high-rise buildings. The blend of local, independent shops and cafes is highly appreciated. Overall, the village atmosphere is viewed as central to local identity, providing a welcome contrast to more urban environments.

Other themes included:



- More cultural events, activities and promotion
- Upgrade public amenities (e.g. parks, libraries)
- Enjoyment of beach activities
- Support for community organisations and events.

Promote as friendly village destination

Residents envision promoting Raumati as a friendly, welcoming village destination with a unique coastal charm. They emphasise the area's relaxed, holiday-like atmosphere, boutique shops, and cafes. Many suggest highlighting the natural beauty, including beaches and Queen Elizabeth Park, as key attractions. There's a desire to showcase arts and creativity, with proposals for markets, festivals, and cultural events. Residents want to present Raumati as a place for visitors to unwind, enjoy nature, and experience a strong sense of community, while maintaining its small-town character and family-friendly appeal.



The community feedback highlighted complex housing concerns in relation to coastal challenges. Residents emphasised the need to balance housing development with character preservation, while expressing concerns about high-density housing. Property-related worries were prominent, including impacts on property values, insurance, and potential loss or damage due to coastal hazards. There was significant concern about flooding impacts and rising property rates. The community called for affordable housing strategies and climate-resilient new homes. Some supported protecting existing coastal properties, while others focused on increasing housing supply and development. Managed retreat was seen as a potential barrier to housing access by some. Overall, the feedback reflected a desire for sustainable, affordable housing solutions that address both current needs and future coastal risks, while maintaining the area's coastal living lifestyle.

The most common themes that emerged from community feedback are:

Concern regarding high density housing

The community feedback expresses significant concern about high-density housing in the Kāpiti Coast district, fearing it would negatively impact the village-like character of their communities. While acknowledging the need for affordable housing, many believe medium to high-density

developments are not suitable. Well-considered medium-density housing with sustainability, adequate parking, and green spaces may be acceptable. Concerns also exist about the impact on infrastructure and the need for more expertise in decision-making.



Balance intensification with character preservation

The community feedback emphasises the importance of balancing intensification with character preservation in the Kāpiti Coast district, particularly in Raumati South. While acknowledging the need for affordable housing, residents believe medium to high-density developments should be carefully considered to maintain the village-like feel and low-key aesthetic. Suggestions include pedestrian-only areas, bike lanes, planting, and design elements to enhance the coastal town feel, along with sensitive development that fits the village character.

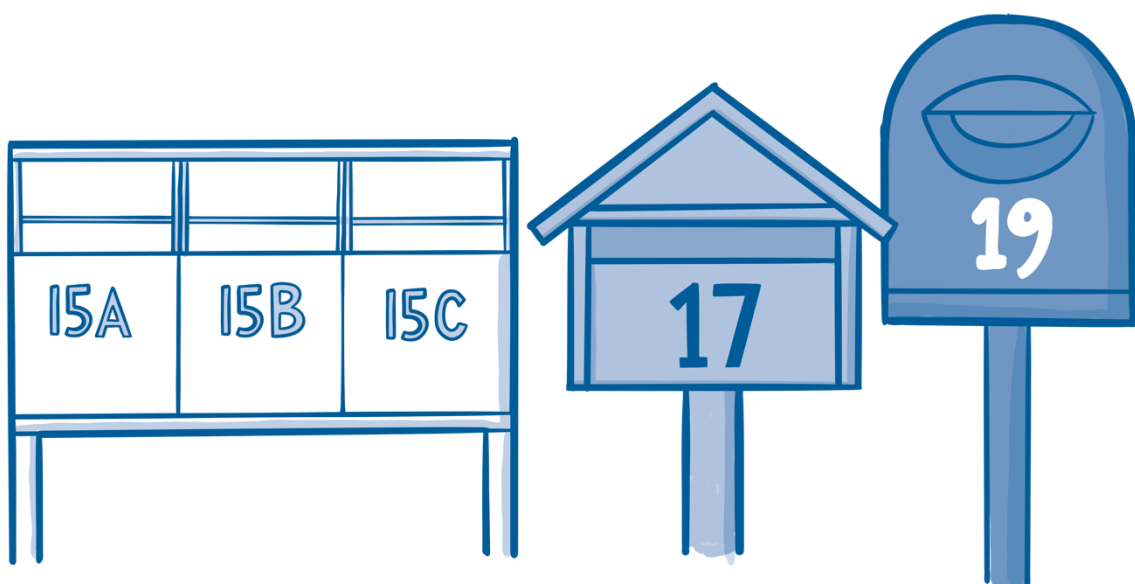
Concern about property value and insurance

The community feedback highlights significant concerns about the potential impact of coastal hazard management plans on property values and insurance costs in the Kāpiti Coast district. Residents fear that the Takutai Kāpiti process and the Council's actions may adversely affect their mortgages, insurability, and property values. They emphasise the need for clarity on defence measures, question sea-level rise estimates, and call for action plans that protect homeowners from scare-mongering tactics and financial disruption.

Other themes included:



- Strategies to ensure housing is affordable.





The feedback related to Hauora | Health emphasised the importance of accessible healthcare and support for overall wellbeing. Residents called for improved access to various health services, including GPs, hospitals, and mental health support. There was a particular focus on care for the elderly and people with disabilities. The community expressed concerns about the potential mental health impacts of coastal changes and the social implications of retreat strategies. Improved public amenities and support for recreational activities were seen as important for community wellbeing. Overall, the feedback reflected a desire for comprehensive, locally available health services and initiatives that support both physical and mental wellbeing across all segments of the community.

The most common themes that emerged from community feedback are:

Improvements in mental health and wellbeing

The community feedback strongly emphasises the positive impact of the coastline on mental health and wellbeing. Residents consistently describe the beach as vital for their emotional and psychological health, citing its therapeutic qualities. Many value the coastline for relaxation, stress relief, and rejuvenation.

Activities like walking, swimming, and simply enjoying the sea view are seen as crucial for maintaining good mental health. The beach is frequently described as a place for solitude, reflection, and grounding. Overall, the community views access to the coast as essential for their overall wellbeing and quality of life.

Support for recreational activities

The community feedback highlights strong support for diverse recreational activities that promote health and wellbeing. There's enthusiasm for organised fitness activities like local walking groups, orienteering, and regular 5km runs. Many emphasise the importance of social gatherings that foster community connections, such as picnics, barbeques, and cultural celebrations. The community values outdoor activities that encourage children's play and active transport. Overall, there's a clear desire for inclusive, multigenerational events that promote physical activity and social interaction, contributing to the community's overall health.

Establish local healthcare facilities

The community feedback emphasised a strong desire for comprehensive local healthcare and wellness facilities. Residents called for accessible medical, dental, and pharmaceutical services within the village, allowing easy access for all, especially the elderly. There was support for a mental health hub and creative spaces that could serve as therapy centres and foster community connection. Overall, the feedback reflected a vision for a self-contained community with a focus on physical and mental wellbeing, combining healthcare facilities with recreational and social spaces to enhance overall quality of life.

Other themes included:



- Concern about impact on mental health
- Improve access to GP services
- Improve access to hospital services.





Kai Food

The feedback on Kai | Food emphasised the value of local food initiatives, highlighting community food gardens, food stores, and seed libraries. These resources are cherished for promoting sustainability, self-sufficiency, and community engagement, helping residents connect over shared interests in gardening and local food production. In conjunction with this local community members enjoy both the variety and availability of local cafés and restaurants on offer in Raumati.

The most common themes that emerged from community feedback are:

Enjoy the variety of cafés and restaurants

The community feedback highlights a strong appreciation for the diverse dining scene. Residents value the range of cafés, restaurants, and eateries, often describing them as key elements of the village's character. Many enjoy the beachside dining options and the relaxed, community-oriented atmosphere of local cafés. The proximity of these establishments to the beach and residential areas is seen as a significant plus. Cafés are frequently mentioned as social hubs, contributing to the area's friendly, village-like feel. Overall, the variety and quality of dining options are viewed as integral to the appeal of Raumati, enhancing its reputation as a desirable seaside destination.

Access to community gardens

Raumati community members express a strong interest in enhancing access to community food gardens and

leveraging the area's natural environment for sustainable living. Initiatives such as planting more fruit trees and fostering the growth of berries in parks like Queen Elizabeth are popular. There's a call for transforming underutilised areas into vibrant spaces that integrate mara kai (community gardens), where residents can collectively grow food. Proposals suggest making these spaces integral to community identity, similar to local landmarks and parks, enhancing food security and fostering a connection with nature.

Access to seed libraries and food stalls

The comments on accessing seed libraries and food stalls highlight a strong community focus on resource sharing and sustainable living. Residents express enthusiasm for seed pods, which enable the sharing of gardening resources, potentially boosting local food production and gardening activities.



The community feedback highlighted a desire for diverse educational opportunities and improved access to schools. Residents called for more educational courses and facilities, including alternative schooling options and potentially new schools. There was a specific emphasis on coastal education, with support for learning about coastal processes, environmental issues, and international coastal management examples. The community expressed interest in public information on coastal issues, suggesting a desire for broader community awareness and engagement. Overall, the feedback reflected a need for both general educational improvements and specialised coastal-related learning opportunities to foster a well-informed community.

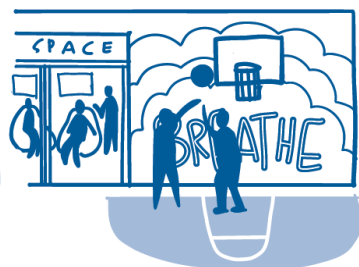
The most common themes that emerged from community feedback are:

More educational courses and facilities

The community feedback indicates a desire for expanded educational opportunities beyond traditional schooling. Residents suggest a range of classes and experiences, including arts, crafts, and outdoor education focusing on local flora and fauna. There's interest in utilising community spaces like halls for classes catering to various age groups. Some propose repurposing existing structures, such

as turning the old pools into a marine aquarium education centre. The community wants venues that can host skills training and interest groups. There are also calls for more practical education, such as surf schools and apprenticeships linked with local businesses. Overall, there's a clear appetite for diverse, community-oriented learning opportunities that cater to all ages and interests.

Spaces & activities for young people



Access to schools

The community feedback consistently highlights the quality of schools as a key asset in Raumati. Residents appreciate the range of educational options, from early childhood facilities to secondary education, with Kāpiti College frequently mentioned. The proximity of schools to the beach and village centre is seen as a positive feature, contributing to the area's family-friendly atmosphere. Many note the ease and safety for children walking or cycling to school. Overall, the educational facilities are viewed as integral to the appeal of Raumati, supporting a thriving community for families and contributing to the village's relaxed, inclusive vibe.

Desire for community environmental education

The community feedback highlights a need for improved environmental education across all age groups. Residents call for better information sharing about engineering options and ecological changes related to climate and coastal issues. There's a desire for comprehensive presentation of all potential solutions, drawing on examples from New Zealand and abroad. The community wants this information to be accessible to everyone, not just those on social media. Overall, there's a clear demand for more transparent, inclusive environmental education that informs all community members about local ecological challenges and potential responses.





Ngā Hono Networks & Connectivity

The feedback related to Ngā Hono | Networks & Connectivity highlighted a strong focus on improving accessibility and infrastructure while preserving coastal character. Key priorities included enhancing public transport, extending and maintaining cycleways and footpaths, and improving road safety and traffic management. Residents valued their proximity to amenities and nearby towns, including Wellington, but called for more accessible commercial areas and improved public facilities. There were concerns about coastal erosion, flooding in specific areas, and the general maintenance of infrastructure. The community emphasised the importance of disability access and proactive infrastructure maintenance. Some residents supported limiting vehicle access to beaches and restoration areas, while there was a desire to improve pedestrian access to the beach. The feedback also touched on the significance of coastal tourism and local businesses. Overall, the community sought a balance between improving accessibility and infrastructure while protecting the coastal environment and character.

The most common themes that emerged from community feedback are:

Development of walkable and bike-friendly paths

The community feedback strongly emphasises the need for improved pedestrian and cycling infrastructure. Residents call for wider, well-maintained footpaths throughout the area, particularly along busy roads and near schools. There's significant support for dedicated walkways, cycleways and bridleways, with many suggesting a network connecting the village, beach, and surrounding

areas. Many want to see Margaret Road pedestrianised or made one-way to create more space for walking and cycling. There's also a desire for better connections between the village and the beach, including an extended coastal walkway. Overall, the community seeks safer, more accessible routes for active transport.



Improve roads

The community feedback highlights a desire for improved road infrastructure and network in Raumati. Residents call for better connections between different areas, particularly linking the village, beach, and surrounding neighbourhoods. There's support for reconfiguring key intersections, with suggestions for roundabouts at busy junctions like Raumati Road and Alexander Road. Some residents request better on and off-ramps to the expressway, especially northbound access. Overall, there's a push for a more cohesive, efficient road network that balances local needs with through-traffic management.

Improve road safety and use with increased cars

The community feedback emphasises a strong desire for improved road safety measures. Residents call for lower speed limits, particularly around schools and in the village centre, with many suggesting 30km/h zones. There's significant support for traffic calming measures such as speed bumps, particularly on busy roads like Poplar Avenue and Rosetta Road. Many want safer pedestrian crossings, especially near schools and beach access points. Overall, there's a clear focus on creating a safer environment for pedestrians and cyclists, particularly children and the elderly.

Other themes included:



- Improve traffic management for increased cars
- Improve public transport and transport hubs
- Extend the public transport network.





Ohunga Income & Work

The feedback related to Ohunga | Income & Work highlighted a desire to boost the local economy while maintaining the area's character. Residents emphasised the importance of supporting local businesses, improving the visual appeal of commercial areas, and addressing vacant properties. There was strong interest in enhancing tourism, including beach tourism and planned tours from cruises, while some cautioned against over-commercialisation. The community called for improved shopping and dining options, with suggestions for hospitality hubs and market days. Concerns were raised about the impact of economic changes on local livelihoods and businesses. Residents stressed the need for local employment opportunities and affordable living. The feedback also touched on improving road infrastructure to support economic growth. Overall, the community sought a balanced approach to economic development, focusing on local business support, tourism enhancement, and maintaining affordability for residents.

The most common themes that emerged from community feedback are:

Retail and hospitality expansion

The community feedback strongly emphasises a desire for a more diverse and vibrant retail and hospitality scene. Residents call for more cafés, restaurants, and bars, particularly those open in the evenings. There's interest in attracting unique, boutique shops and reducing the number of hairdressers and estate agents. Some suggest adding a butcher, deli, and fruit and vegetable shop to enhance daily shopping options. There's also support for occasional markets, food trucks, and outdoor dining spaces. Overall, the community wants Raumati to develop

as a destination for both locals and visitors, with a focus on quality food, drink, and shopping experiences that complement the beach town atmosphere.



Enjoy visiting local shops

The community feedback strongly emphasises appreciation for the unique shopping experience. Residents value the village-like atmosphere and the variety of locally-owned, boutique shops. Many enjoy the personal service and friendly interactions with shopkeepers. The mix of cafés, bakeries, and speciality stores is seen as a draw for both locals and visitors. People appreciate being able to walk to shops for daily needs and enjoy the relaxed, beachy vibe while shopping. Overall, the local shopping scene is viewed as an integral part of local charm and community feel.



Improve visual appeal and character of the town

The community feedback emphasises a strong desire to enhance visual appeal and functionality. Residents call for a general facelift of shop fronts, improved streetscapes with more greenery, and better pedestrian spaces. Some suggest adding hanging flower baskets, fairy lights, and public art to create a more inviting atmosphere. There's support for developing underutilised areas, particularly near the beach, to create vibrant public spaces. The community wants to see a more cohesive village feel, with suggestions for paved streets, underground utilities, and a consistent design theme. Overall, there's a push to modernise while maintaining coastal charm.

Other themes included:



- Improved road infrastructure and connectivity
- Support for local businesses and groups
- Enhance tourism industry, potentially using new branding.



Ora Rite Equality

Ora Rite | Equality feedback highlighted concerns about fairness and inclusivity in coastal management. Key issues included the distribution of protection costs and the debate over prioritising private versus public assets. Residents emphasised the importance of inclusivity, particularly regarding accessibility for the elderly and disabled. There was also a focus on preserving coastal assets for future generations. Overall, the feedback reflected a desire for equitable, accessible, and sustainable coastal management that considers the needs of all community members, both present and future.

The most common themes that emerged from community feedback were:

Concern about distribution of protection costs

The community feedback reveals significant concern about how coastal protection costs will be distributed. Residents question the potential costs of managed retreat, with estimates ranging into billions for relocating homes. There's debate over who should bear these costs - central government, local government, or property owners. Some suggest partial cost-sharing for defending private property. Others argue that recent coastal property buyers should bear more responsibility, given their awareness of climate change risks. Overall, there's a call for transparency in costing and a fair approach that doesn't overly burden the wider community for protecting specific coastal areas.

Issues with accessibility for elderly and disabled

The community feedback highlights concerns about accessibility to the beach and coastline for elderly and disabled residents. There's a noted lack of disabled access to these areas, which prevents some community members from fully enjoying coastal spaces. Some residents suggest that car access should be maintained for those with disabilities, though this view is not unanimous. The feedback indicates that high tides can further limit accessibility. Overall, there's a call for improved infrastructure and access points that would allow elderly and disabled residents to better enjoy coastal areas, balancing this need with other community priorities.

Preservation for future generations

The community feedback emphasises a strong desire to preserve the beach for future generations. There's a clear sentiment that the beach is a crucial recreational asset that should be protected. Some express concern that current council and Coastal Advisory Panel (CAP) actions might negatively impact this legacy, potentially affecting property values and children's futures. Overall, there's a strong focus on maintaining the beach's accessibility and safety for families, ensuring it remains a cherished resource for generations to come.

Other key themes



included:

- Inclusive of diversity
- Debate about protecting private vs public assets.



2.3 Partnership

Below is a summary of the key findings related to 'Partnership'.



He Waka eke noa/A Shared Waka Community Partnership

The feedback related to He Waka eke noa/A Shared Waka | Community Partnership highlighted diverse concerns and suggestions. Key issues included the need for a science-based, tailored approach to CAP, improved consultation processes, and greater community involvement in decision-making. Residents called for proactive mitigation strategies and consideration of various hazards. Fiscal responsibility was emphasised, with concerns about council spending and rates. There was support for both immediate solutions and long-term planning, with a focus on transparency and inclusion of local expertise. Overall, the feedback reflected a desire for a more inclusive, scientifically grounded approach to coastal adaptation, balanced with effective governance and fiscal prudence.

The most common themes that emerged from community feedback are:

Concern about inadequate council planning and action

The community feedback expresses significant concern about the Council's approach to coastal hazards and planning. Residents criticise the lack of consultation and transparency in decision-making processes. Many feel the Council's response is too slow, particularly regarding seawall maintenance and construction. There's frustration about the perceived lack of

a clear, community-led action plan to address coastal changes. Some residents worry about the Council's use of what they consider flawed data or extreme scenarios. Overall, there's a strong desire for more proactive, transparent, and community-oriented planning from the Council.

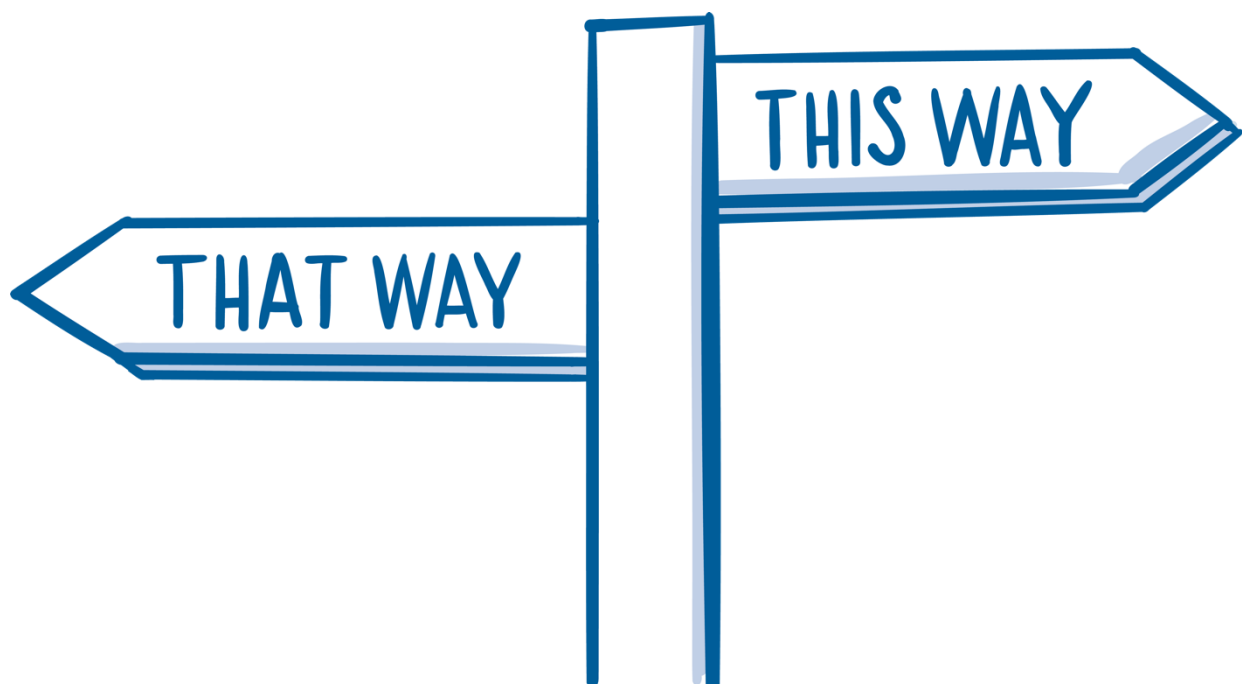
Support for more inclusive and transparent engagement

The community feedback strongly emphasises the need for more inclusive and transparent engagement processes. Residents call for genuine consultation, rather than what some perceive as predetermined outcomes. There's a desire for better representation of community views in decision-making bodies like the Coastal Advisory Panel used for Takutai Kāpiti. Many want improved communication, including accessible summaries of meetings and clear explanations of data used for projections. Some suggest a referendum on coastal issues. Overall, there's a strong sentiment that the community should have a more direct role in shaping plans for the future, with emphasis on diverse age representation and two-way information flow.

Other themes included:



- Concern about lack of community consultation or inadequate consultation processes.



3 Data analysis methodology

3.1 Survey data analysis

PublicVoice used a step-by-step method called thematic analysis to review the open-ended responses from the Vision Raumati community engagement survey. This method follows five main steps:

1. **Understanding the Data:** Analysts read the data multiple times to grasp its content.
2. **Initial Coding:** The data was sorted into labelled segments highlighting key points.
3. **Identifying Themes:** These segments were then grouped into broader themes.
4. **Refining Themes:** Themes were checked for relevance and clarity.
5. **Finalising Themes:** Each theme was carefully defined, possibly with sub-themes.

3.2 Key findings analysis

The analysis of the combined data was structured using the framework of the Council's Doughnut Economic Framework, which provides a holistic view of the community's well-being by considering social, cultural, environmental, and economic factors.

The key findings were organised into themes that align with the various dimensions of the Doughnut Framework. This approach allowed for a comprehensive understanding of the community's values, priorities, and concerns, extending beyond the specific questions asked in the survey.

3.3 Reporting

For the survey data, tables illustrating the frequency of the key themes have been included to demonstrate the significance of each theme. Only descriptions of the most frequent themes have been included in Section 4, "Key Findings from the Vision Raumati survey," to highlight the main points expressed by respondents.

In contrast, Section 3 reports the key findings and presents the most common topics from the combined data, organised according to the doughnut model. This section provides a more detailed analysis, offering valuable insights and guidance for the Kāpiti Coast District Council's decision-making processes and future planning efforts.

The methodology section clarifies the distinct methods used to examine and present the community's feedback by differentiating between the analysis and reporting approaches for the survey data and the key findings.

Phase One: Gathering initial views

4 Phase 1 - Vision Raumati survey

This section presents the key findings from the Vision Raumati community engagement survey which received 132 responses. The survey asked ten questions:

1. Why Raumati? What's your connection to Raumati?
2. How does it make you feel when you come home to the village?
3. How do you get to/around Raumati? & is this different to how you would want to, in an ideal world?
4. What do you love most about Raumati?
5. What do you see as being most distinctive about the village?
6. How would you like Raumati to look and feel?
7. How do you want Raumati to be known by those who don't have the privilege of living here?
8. What kind of community spirit would we like to see and how would we like this to manifest?
9. What would you love for children? For elderly?
10. If you had a generous pot of money, what is it that would make all the difference?

The analysis of survey data has been structured using the framework of the Council's Doughnut Economic Framework. The key findings are organised into themes that align with the various dimensions of the Doughnut Framework. A subset of these questions was used for other stakeholder engagements listed in the front of this report resulting in higher numbers of responses and frequencies for those questions.

The most common topics that emerged from the community feedback are highlighted for each theme. These insights shed light on the Raumati community's values, priorities, and concerns, offering valuable guidance for the Kāpiti Coast District Council's decision-making processes and future planning efforts.

4.1 Why Raumati? What's your connection to Raumati?

Respondents were asked to describe their connection to Raumati. Table 1 details the various connections provided by respondents.

Overview of responses

Connections with others — Respondents express positive sentiments about their connections with others in Raumati. They mention the friendly, close-knit community, the ability to form relationships and connections within the village, and the convenience of having friends, amenities, and schools within walking or biking distance.

Biodiversity — Respondents expressed positive sentiments about the biodiversity in their area, particularly highlighting the beach and its close proximity. Additionally, access to nature, and the peaceful atmosphere were mentioned as key aspects of their environment.

Peace & safety — Respondents express a strong desire for peace and tranquillity in their community, emphasising the importance of a quiet and safe environment for their families to grow up in.

Networks & connectivity — Respondents mention the proximity of Raumati to State Highway 1, Queen Elizabeth Park, local shops, and public transportation as a positive aspect of living in the area.

Theme	Subtheme	Frequency
CONNECTIONS WITH OTHERS		145
	Resident of Raumati	63
	Community feel and initiatives	25
	Village atmosphere	22
	Family ties to Raumati	12
	Local shopping and businesses	10
	Dining experiences e.g. café, restaurants	6
	Family friendly village	4
	Recreational activities	3
BIODIVERSITY		39
	Proximity to nature	39
PEACE & SAFETY		16
	Quiet, peaceful living	16
NETWORKS & CONNECTIVITY		13
	Access to amenities	8
	Access to transport connections	5
EDUCATION & TRAINING		5
	Access to schools	5
CLIMATE & CHANGE		3
	Enjoy the local climate and weather	3
HOUSING		2
	My home was affordable when I purchased it	2
INCOME & WORK		2
	Cheaper in comparison to other areas	1
	Work in Raumati	1
HEALTH		1
	Access to dyslexia support	1

Table 1: Why Raumati? What's your connection to Raumati?

4.1 How does it make you feel when you come home to the village?

Respondents were asked to describe their feelings when returning home to Raumati. Table 2 details the various feelings provided by respondents.

Overview of responses

Peace & safety — Respondents express positive sentiments about the peaceful nature of Raumati. Important aspects highlighted include feeling safe, along with the relaxed and peaceful atmosphere of the village.

Connections with others — The respondents express positive sentiments about their connections with others in Raumati. They describe the village as having a great local vibe where people care for each other, a place that feels like home, welcoming, and familiar. They appreciate the sense of community and belonging that the village provides.

Networks & connectivity — Respondents have mixed opinions about the networks and connections in Raumati. Some appreciate the convenience and proximity of amenities, such as shops and services, while others express disappointment in the lack of visual appeal and limited offerings. There is a desire for better connections to the beach and other areas, as well as a need for improvements in pedestrian safety and planning. Additionally, some respondents feel that the village could benefit from more shops, restaurants, and a stronger sense of community.

Theme	Subtheme	Frequency
PEACE & SAFETY		84
	Feelings of happiness and contentment	44
	Relaxed and peaceful	31
	Safe and secure	9
CONNECTIONS WITH OTHERS		63
	Identify the area as 'home'	24
	Friendly and welcoming community	14
	A sense of belonging	11
	Appreciation for the vibrancy of the village	8
	Sense of being on holiday	6
NETWORKS & CONNECTIVITY		27
	Needs are met with local shops and businesses	13
	A sense of lackluster and stagnation	11
	Investment in paths and cycleways needed	3
BIODIVERSITY		9
	Appreciation for nature	9
COMMUNITY PARTNERSHIP		2
	Concern with wasteful rates spend	2

Table 2: How does it make you feel when you come home to the village?

Selected quotes

"It's got a great local vibe. People really seem to care for each other."

How does it make you feel when you come home to the village?

4.2 How do you get to/around Raumati? & is this different to how you would want to, in an ideal world?

Respondents were asked to articulate their modes of transport to and within Raumati and to consider how these preferences might differ in an ideal world. Table 3 shows the current transport preferences of the respondents, as well as their ideal world choices.

Overview of responses

Current networks & connectivity — Respondents mentioned various modes of transportation including walking, driving, cycling, and using public transport. Some expressed a preference for walking more or using alternatives to cars to reduce their environmental impact.

Ideal networks & connectivity — The respondents have various modes of ideal transportation, including walking, driving, cycling, and using public transport. Many express a desire for improved infrastructure for cycling and walking, such as bike lanes and paved walkways. Some suggest the need for more frequent bus services or better public transportation options.

Theme	Subtheme	Frequency
CURRENT NETWORKS & CONNECTIVITY		267
	Car	104
	Walk	91
	Cycle/e-bike	65
	Bus	7
IDEAL NETWORKS & CONNECTIVITY		104
	Cycle/e-bike	26
	Walk	20
	Car	17
	Bus	11
	Extend bike lanes and make them safer	11
	No difference	9
	Reduced reliance on car	4
	Public transport	3

Table 3: How do you get to/around Raumati? & is this different to how you would want to, in an ideal world?

Selected quotes

"Bike or car. Ideally would prefer to bike (weather permitted), but the roading and places to lock up bikes is not always easy!"

How do you get to/around Raumati? & is this different to how you would want to, in an ideal world?

"At the moment I walk about half the time, drive the other half. Would love to be closer to 95% walking."

How do you get to/around Raumati? & is this different to how you would want to, in an ideal world?

4.3 What do you love most about Raumati?

Respondents were asked what they love most about Raumati. Table 4 details the various answers provided by respondents.

Overview of responses

Connections with others — Respondents express positive sentiments about their connections with others regarding the local feel, kind people, beachy village atmosphere, supportive community, friendly neighbours, and sense of community. Some emphasise the village vibe and the close-knit community, while others highlight the diversity of people and the artistic, creative, and musical atmosphere. Overall, they value the connections they have with the people and the community in the area.

Networks & connectivity — Respondents expressed positive sentiments about the networks and connections in Raumati. Important aspects highlighted include the proximity to the beach, the accessibility of essential services, and convenience of the area. Some respondents suggested the need for more variety and entertainment options in the village.

Biodiversity — Respondents emphasise the importance of the beach and community aspect of the area. They also appreciate the access to nature and the peaceful atmosphere. Overall, the respondents have a positive sentiment towards the biodiversity in the region.

Peace & safety — Respondents highlight the importance of maintaining a quiet and peaceful atmosphere in the village. They appreciate the sense of community and the safety it provides for their children.

Theme	Subtheme	Frequency
CONNECTIONS WITH OTHERS		115
	Village atmosphere and small size	43
	Community spirit and connectedness	32
	Personal connections and relationships	20
	Diversity and creativity	7
	Family friendly village	5
	Raumati Social Club	5
	Recreational activities	3
NETWORKS & CONNECTIVITY		82
	Dining experiences e.g. café, restaurants	28
	Local shopping and businesses	26
	Accessible and walkable village	14
	Marine Gardens	4
	More attractions needed	4
	Access to amenities	3
	Access to transport connections	3
BIODIVERSITY		63
	Natural surroundings (beach, parks, hills)	63
PEACE & SAFETY		26
	Relaxed lifestyle	13
	Quiet, peaceful living	7
	Safe and secure	6
CLIMATE & CHANGE		5
	Enjoy the local climate and weather	5
EDUCATION & TRAINING		5
	Schooling	5

Table 4: What do you love most about Raumati?

4.4 What do you see as being most distinctive about the village?

Respondents were asked what they see as being most distinctive about the village in Raumati. Table 5 displays the various opinions of the respondents.

Overview of responses

Networks & connectivity — Respondents highlight the presence of boutique shops and cafés, the mix of retail and hospitality establishments within the area as important. Respondents highly praise the proximity to Marine Gardens and the beach, emphasising the convenience and accessibility it offers. Some respondents feel that the area has a laid-back and seaside vibe, but there is also room for improvement in terms of footpaths and shopfronts.

Connections with others — Respondents express positive sentiments about their connections with others in Raumati. They mention the small town, old-school community feel, where people know each other and care about each other. They appreciate the friendly and relaxed vibe, as well as the sense of community and the mix of small businesses owned by locals.

Biodiversity — Respondents highlight the great location near the beach, the proximity to nature, including nearby parks, is also mentioned positively. Overall, there is a positive sentiment regarding biodiversity and the surrounding environment.

Peace & safety — Respondents highlighted the friendly and relaxed vibe of the area, along with the safe beach and peaceful atmosphere.

Theme	Subtheme	Frequency
NETWORKS & CONNECTIVITY		86
	Local shopping and businesses	33
	Dining experiences e.g., café, restaurants	26
	Marine Gardens	11
	Accessible and walkable village	6
	Architecture	4
	Access to amenities	3
	Hanging baskets	3
CONNECTIONS WITH OTHERS		71
	Village atmosphere and small size	30
	Community spirit and connectedness	12
	Personal connections and relationships	10
	Village is no longer distinctive or charming	8
	Diversity and creativity	6
	Unique character and charm	5

BIODIVERSITY		35
	Natural surroundings (beach, parks, hills)	35
PEACE & SAFETY		13
	Relaxed lifestyle	13
CLIMATE & CHANGE		3
	Enjoy the local climate and weather	3
EDUCATION & TRAINING		2
	Schooling	2
HOUSING		2
	Good mix of housing	2

Table 5: What do you see as being most distinctive about the village?

4.5 How would you like Raumati to look and feel?

Respondents were asked how they would like Raumati to look and feel. Table 6 shows the various opinions and desires expressed by respondents under multiple categories.

Overview of responses

Connections with others — Respondents expressed a desire to maintain the village feel of Raumati. Some respondents emphasised the importance of community support and the desire for more social events and activities. Overall, the respondents expressed a desire for a welcoming, lively, and connected community that embraces diversity and maintains its character.

Networks & connectivity — Respondents expressed a desire for a roundabout at the end of Raumati Rd to alleviate traffic congestion. Further important aspects highlighted include the desire for pedestrian-friendly areas, better walking and cycling infrastructure, improved traffic management for safety, the need for more diverse shops and eateries, connectivity between the village and the beach. Additionally, respondents expressed a desire for better maintenance of footpaths and less car dominance.

Income & work — Respondents are generally positive about supporting local businesses. Important aspects include the desire for a vibrant restaurant and café scene and the desire for more diverse businesses and job opportunities. Overall, there is a focus on creating a welcoming and lively village that meets the daily needs of the community while also attracting visitors.

Biodiversity — Respondents expressed various sentiments about biodiversity in the area. Some wanted to see more flowers, garden boxes, and native trees planted, while others emphasised the need for maintenance and upkeep. The overall desire was for an environmentally friendly community that prioritises green spaces, and natural habitats for wildlife.

Land use & quality — Respondents expressed a desire utilising the old swimming pool area for community purposes. They also mentioned the need for more

pedestrian-friendly spaces and a stronger emphasis on inclusivity and amenities for young families. The importance of environmental sustainability was also highlighted.

Other — Respondents express a strong desire for the town to maintain its character and remain unchanged, emphasising that it is already perfect and does not need any major changes.

Theme	Subtheme	Frequency
CONNECTIONS WITH OTHERS		130
	Retain village atmosphere	32
	Friendly/vibrant community	17
	Improve recreational facilities	12
	Community events	8
	Keep the village community well connected	8
	Relaxing	8
	Safe and secure	8
	More entertainment venues	6
	Community creativity	4
	Diverse community	4
	Keep the character and charm	4
	Keep the village small	4
	More community spaces	4
	More recreational options	4
	Quirky	4
	Improve activities for teenagers	3
NETWORKS & CONNECTIVITY		107
	Improve pedestrian access	29
	Improve walking and cycling trails	21
	Reduced traffic/car usage	12
	Improve road safety	11
	Improve footpaths	8
	Reduce speed limits	8
	Link between beach and village/shops	5
	Beachfront cycle lane	4
	Improve cycle access	3
	Improve public transport	3
	Invest in open spaces and parks	3
INCOME & WORK		61
	Business and Retail Development	18
	Expand café culture	13
	Support for local art	11
	Community markets	6
	Increase number of eateries	5
	Increased outdoor dining	5

Theme	Subtheme	Frequency
BIODIVERSITY	A destination village for tourists	3
		24
	Greening of public spaces	11
	Increase animal biodiversity	5
	Plant more trees	5
	Safe from the impacts of climate change	3
LAND USE & QUALITY		22
	Keep village clean and attractive	7
	Improve old swimming pool building	5
	Sustainable development	4
	Make village Margaret Road pedestrian only	3
	Picnic areas along beachfront	3
OTHER		16
	Prefer status quo	16
HOUSING		8
	More affordable housing	8

Table 6: How would you like Raumati to look and feel?

Selected quotes

"Keep its village feel. Independent shops and cafes, plenty parks and green spaces. Careful consideration for planning. I'd love for more affordable housing to be available yet medium to high density options aren't a good fit for the village."

How would you like Raumati to look and feel?

4.6 How do you want Raumati to be known by those who don't have the privilege of living here?

Respondents were asked how they want Raumati to be known by those who don't live there. Table 7 shows the various answers provided by respondents.

Overview of responses

Connections with others — Respondents would like Raumati to be known as friendly, inclusive, and welcoming. The community should be characterised as a place where people of all ages can come together, with a focus on family-centred activities. Ideally, the village should be seen as a hub for arts, music, and creativity, fostering a sense of connectedness among its residents.

Peace & safety — Respondents would like Raumati to be known for being a safe and friendly place to visit and live, with a focus on the beach-side, relaxed atmosphere and inclusive community.

Biodiversity — Respondents describe Raumati as a beautiful, friendly, beachside location and would like the area to be known for this. The community would also like to be described as one that values nature and the well-being of its residents and visitors, and one that maintains its commitment to being environmentally friendly.

Networks & connectivity — Respondents would like Raumati to be known as a destination that is accessible, with great shops and services. They also highlight the importance of Raumati having easy access to transport options and being known as a place where people can safely walk and bike.

Theme	Subtheme	Frequency
CONNECTIONS WITH OTHERS		101
	Visitor friendly	27
	Village atmosphere and small size	19
	Community spirit and connectedness	13
	Artistic and creative community	11
	Unique character and charm	9
	Ideal weekend getaway or holiday destination	8
	Family friendly	7
	Vibrant place to visit or live	4
	Recreational activities	3
PEACE & SAFETY		52
	Relaxed lifestyle	20
	Warm and welcoming	15
	Safe and secure	11
	Quiet, peaceful living	6
BIODIVERSITY		43
	Ideal beach location	32
	Natural surroundings (beach, parks, hills)	7
	Environmentally friendly	4

Theme	Subtheme	Frequency
NETWORKS & CONNECTIVITY		41
	Destination shopping and dining	25
	Walking and cycling location	7
	Accessible	6
	Pedestrian friendly	3
CLIMATE & WEATHER		8
	Sunshine and warm weather	8
COMMUNITY PARTNERSHIP		5
	Prefer it remain unknown	5
EDUCATION & TRAINING		1
	Great schools	1
INCOME & WORK		1
	Affordable	1

Table 7: How do you want Raumati to be known by those who don't have the privilege of living here?

Selected quotes

"Raumati in te reo Māori means Summer. So, it needs to be known as a family friendly, beach suburb for all year round living."

How do you want Raumati to be known by those who don't have the privilege of living here?

"Sunny, beachside suburb with a relaxed vibe. A place where anyone is welcome, and everyone can fit in. I would like to see kids playing on the street and lots of people walking around the streets."

How do you want Raumati to be known by those who don't have the privilege of living here?

"Nice place they can come for a day. Head to marine gardens/beach, watch a show at Te Raukura, shop in various clothing shops and have dinner at one of the restaurants."

How do you want Raumati to be known by those who don't have the privilege of living here?

"As a gorgeous friendly place to visit. Friendly locals. Great place to swim, fish, eat and drink."

How do you want Raumati to be known by those who don't have the privilege of living here?

4.7 What kind of community spirit would we like to see and how would we like this to manifest?

Respondents were asked what kind of community spirit they would like to see and how they would like this to manifest. Table 8 shows the variety of responses.

Overview of responses

Connections with others — Respondents would like to foster a community spirit that includes the importance of kindness, respect, and inclusivity towards all residents and visitors. They also emphasise the need for community support and fostering a spirit of helpfulness and looking out for one another in the community.

Community partnership — Respondents express a desire for more community events such as street parties, festivals, cultural events and opportunities for socialising. Additionally, respondents emphasise the importance of a strong democracy spirit and community involvement through various activities such as community consultation meetings, beach clean-up, and neighbours BBQs.

Equality — Respondents highlighted the importance of inclusivity for age, gender, and race, as well as the acceptance and generosity towards all regardless of income or status. They also emphasised the need for a welcoming and friendly community, where different cultures and identities are celebrated through cultural events and community gatherings. Lastly, respondents expressed a desire for more diversity in the community, with a greater range of people from different cultures and demographics, and a more accepting tone towards all.

Income & work — Respondents emphasise the need for more community events and activities such as outdoor markets, festivals, food trucks, and street markets in the area. They also express a desire for a sense of community and identity, with an emphasis on supporting local businesses and producers. There is a suggestion to make the streets more business-friendly and pedestrian-friendly.

Theme	Subtheme	Frequency
CONNECTIONS WITH OTHERS		112
	Friendly community	31
	Welcoming and open to all	29

Theme	Subtheme	Frequency
	Mutual aid and looking out for each other	26
	Retain the current spirit	10
	Feeling connected	6
	A community of kindness	5
	Calm and relaxed	5
COMMUNITY PARTNERSHIP		43
	Encouragement for communal activities and events	40
	Spirit of democracy	3
EQUALITY		29
	Tolerance/acceptance of different views/values	12
	Honouring/celebrating cultures	5
	Respectful of everyone	5
	Diverse population	4
	Focus on caring for elderly/less abled	3
INCOME & WORK		13
	Support for a community market	6
	Vendor and business friendly	4
	A community that buys and supports local	3
NETWORKS & CONNECTIVITY		5
	People connecting at local spaces/eateries	5
PEACE & SAFETY		5
	Safe and secure	5
BIODIVERSITY		3
	Ecological mindfulness/green initiatives	3
EDUCATION & TRAINING		2
	Increased involvement with schools	1
	Nurture creativity	1
HEALTH		1
	Promoting healthy living/wellbeing	1
HOUSING		1
	Concern regarding high rise/infill housing	1

Table 8: What kind of community spirit would we like to see and how would we like this to manifest?

Selected quotes

"Friendly and welcoming. Lots of places to commune and do things - activities to join in - some could be free but most user pays. Aimed to enable kids and young adults to join in with community."

What kind of community spirit would we like to see and how would we like this to manifest?

"I would like to see a spirit of kindness and caring and inclusivity. Currently the feeling is fear, especially in the elderly. Very sad to see."

What kind of community spirit would we like to see and how would we like this to manifest?

"With a strong democracy spirit and community involvement: community consultation meetings, beach clean-up, neighbours, bbq, music and art festival, seeds saver exchange, etc."

What kind of community spirit would we like to see and how would we like this to manifest?

"Helping each other out- the free roadside stuff. Less self-proclaimed experts telling experts how to do stuff. Less tolerance for speeding and crime."

What kind of community spirit would we like to see and how would we like this to manifest?

4.8 What would you love for children? For the elderly?

Respondents were asked what they would love for children and older people. Table 9 shows the various answers. Some responses were general in nature and not specific to children or the elderly. These have also been included here.

Overview of responses

Networks & connectivity — Respondents have highlighted the importance of safe and accessible infrastructure such as footpaths, bike lanes, and pedestrian crossings. They also mention the need for facilities that are easy to access.

Children — Respondents mention the need for more activities for children, such as classes for arts and crafts and outdoor adventures. They also emphasise the

importance of safe roads and access to parks and beaches for children. Additionally, respondents mention the need for more activities and funding for teenagers as well.

Connections with others — Respondents mention the need for more community facilities generally, with increased activities, and events to strengthen connections with others. There is a desire for social activities and events for young people, as well as intergenerational hangouts. Overall, the focus is on creating safe, accessible, and inclusive spaces that fosters social interaction and a sense of belonging.

Older persons — Respondents mention the need for a safe and accessible area for older persons, with ease of access for those with disabilities. They also emphasise the importance of affordable housing to ensure older residents can continue to live in Raumati. They suggest providing social gatherings and fun events for the elderly, as well as safe roads and access to village shops. There is also a suggestion to install ‘happy to chat’ benches to address loneliness and foster intergenerational interaction.

Peace & safety — Respondents express the importance of safety in their community, specifically in terms of accessibility for those with disabilities, freedom from fear, safe parks and walking/cycling paths, and the need for children to have a safe and enjoyable environment. Overall, the focus is on creating a safe and inclusive community where everyone feels valued.

Theme	Subtheme	Frequency
NETWORKS & CONNECTIVITY		95
	Improved and safe footpaths	20
	Road safety/safety	19
	Improved and safe cycleways	16
	Increased accessibility around Raumati	9
	Reduce speed limit	9
	Public seating	8
	Improve public transport	5
	Improved/more facilities, amenities and retail	3
	Pedestrian friendly	3
	Reduced traffic/car usage	3
CHILDREN		30
	Better playgrounds and parks	7
	More activities for teens	7
	Better access to the beach	5
	More indoor activities on cold days	4
	Safe spaces to play	4
	Sport activities for children	3
CONNECTIONS WITH OTHERS		26
	Spaces that facilitate social connections	12

Theme	Subtheme	Frequency
OLDER PERSONS	Community centre	5
	More events	5
	Outdoor/indoor entertainment	4
		23
	Events and activities for older persons	8
	Community support and inclusion	6
	Access to healthcare	3
PEACE & SAFETY	More accessible parking	3
	Well maintained coastal walkway	3
OTHER	Feeling of safety and security	16
BIODIVERSITY	Status quo	7
		7
HOUSING	Natural green spaces	2
	Plant trees	1
INCOME & WORK		1
	Affordable housing for families	1
	Employment opportunity for school kids	1

Table 9: What would you love for children? For elderly?

Selected quotes

"I'd like better street lighting for walking at night and for the footpaths to be cleared to be push chair and wheelchair friendly. There's a lot of grass or people's hedges growing over the footpath and it's especially inaccessible on bin day."

What would you love for children? For the elderly?

"The speed limits to be recognised, too many cars travel at speed through the village, children and elderly are at risk. Perhaps speed bumps need to be put in place."

What would you love for children? For the elderly?

"Safer intersections to cross (Margaret/Raumati Rd's). More encouragement to use and enjoy the beach.) develop the Wharemauku stream entrance to the sea, so kids can play and enjoy that area."

What would you love for children? For the elderly?

4.9 If you had a generous pot of money, what is it that would make all the difference?

Respondents were asked what they would do with a generous pot of money to make the most difference. Table 10 shows the various opinions and desires expressed by respondents.

Overview of responses

Connections with others — Respondents envision a variety of improvements and additions to enhance connections with others in Raumati. Some suggestions include outdoor dining options, hosting regular community events, creating a community hub or creative space, supporting local businesses and artists, and promoting community spirit and inclusivity. Many emphasise the importance of preserving the village's unique atmosphere and natural beachy vibe while making these changes.

Networks & connectivity — Respondents express a desire to pedestrianise Margaret Road and create a more café-like atmosphere. Safety measures, such as safer road crossings, roundabouts, and reduced speed limits, are also mentioned. Respondents are requesting various infrastructure upgrades for networks and connections, such as upgrading or maintaining pavements and crossings for safer cycling, improving footpaths, and cycle lanes.

Income & work — Respondents suggest improving the waterfront area by developing it into a drawcard, removing shops targeted at only the wealthy elderly, and creating outdoor spaces for cafés and bars. Other ideas include hosting regular events, opening a community hub, and beautifying the village with better roadways and aesthetic features.

Land use & quality — Respondents mention reopening and developing the old pool area for various purposes, such as a marine aquarium education centre, live music venue, or fun holiday activities. Residents also suggest enhancing the waterfront area by developing it into a more attractive and functional space, including better road crossings, improved views, and the creation of outdoor spaces for cafés and bars.

Biodiversity — Respondents mentioned various ideas to improve biodiversity in the area, including planting more trees, beautifying the outdoor spaces with plants and flowers, and promoting the growth of fruit trees and berries. They also suggested making the village more aesthetically pleasing, with features like hanging pots and outdoor dining areas. Some respondents also emphasised the importance of cleaning up storm-related damage.

Housing — Respondents mentioned the need for more housing in the area with supporting infrastructure, emphasising the importance of affordable housing and social care. They also expressed a desire for better housing conditions, such as decent heating, and called for sensitive development that fits the village and is affordable for residents.

Theme	Subtheme	Frequency
CONNECTIONS WITH OTHERS		61
	Improve art culture	12
	Implement community hub	11
	Festivals and events	9
	Increase number of eateries	7
	Maintain village feel/status quo	6
	Community activities	5
	Implement live music venue	4
	Outdoor eating	4
	More outdoor activities	3
NETWORKS & CONNECTIVITY		59
	Make Margaret Road pedestrian only at the shops	10
	Infrastructure upgrades (e.g. sewage/footpaths)	8
	Beachfront walk	7
	Public transport enhancement (e.g. tram line built)	7
	Improved pedestrian access	6
	Traffic and road improvements	6
	Make Margaret Road one way	5
	Link between beach and village/shops	4
	Implement pedestrian crossings	3
	Implement speed bumps	3
INCOME & WORK		39
	Retail/hospitality expansion (e.g. new shops, cafés)	20
	Enhance existing businesses (e.g. rebuild, beautify)	9
	Support for local businesses & social enterprises	7
	Community market	3
LAND USE & QUALITY		27
	Improve old swimming pool building	11
	Develop waterfront	9
	Adaptation to sea level rise (e.g. sea wall)	4
	Sustainable developments	3
BIODIVERSITY		18
	Urban beautification (e.g. landscaping, planting)	11
	Community food gardens	7
HOUSING		10
	Affordable and eco-friendly housing	6
	Increase housing	4

Theme	Subtheme	Frequency
PEACE & SAFETY		8
	Safety improvements (e.g. cycle paths)	8
HEALTH		6
	Access to healthcare (e.g. local doctor's surgery)	3
	Access to social services	3
EDUCATION & TRAINING		4
	Education facilities	4
COMMUNITY PARTNERSHIP		3
	Support for local groups (e.g. arts, surf club)	3

Table 10: If you had a generous pot of money, what is it that would make all the difference?

Selected quotes

"Put a roundabout in for traffic safety, add in more restaurants to increase the vibe, increase the art culture, pop up gallery spaces or art installations, community hub area, putting something in place that actually talks about the history of Raumati."

If you had a generous pot of money, what is it that would make all the difference?

Phase Two: Testing what we have heard so far

5 Phase 2 - Vision follow up survey

This section of the report summarises community feedback received as part of Council's Vision follow up survey. The community was provided with a summary of the feedback received from the initial engagement for reflection and refining.

5.1 Does this reflect what's important to you?

Respondents were asked whether the feedback received reflected what was important to them. No responses were received from the Raumati community for this question.

5.2 Is there anything missing?

Respondents were asked whether there is anything missing. Table 11 provides an overview of what respondents feel is missing.

Theme	Subtheme	Frequency
CONNECTIONS WITH OTHERS		1
	Outdoor sports and recreational facilities	1

Table 11: Does this reflect what's important to you?

Selected quotes

"Possibly the development of extra multiuse tracks 1. Nikau valley to Waikanae 2. Raumati Escarpment 3. Mangakotukutuku Valley to Nikau Valley."

Is there anything missing?

Broader community engagement

As part of developing the Vision for Raumati, the Kāpiti Coast District Council sought to gather insights from broader community engagement processes beyond the direct Vision Raumati survey. This approach allowed for a more comprehensive understanding of community priorities and concerns by incorporating feedback from related consultations.

The following sections summarise key findings from two significant engagement activities that have relevance for future development:

- The Long Term Plan 2024-34 consultation process
- The Takutai Kāpiti coastal adaptation project

By considering these additional sources of community input alongside the Vision Raumati survey results, we can develop a more nuanced and holistic view of the community's aspirations and needs. This multi-faceted approach to engagement ensures that the resulting vision for Raumati is well-informed and truly reflective of diverse community perspectives.

6 Relevant Insights from the Long-Term Plan Process

The Long Term Plan 2024-34 consultation process gathered valuable community feedback on future development. This engagement captured a range of views on issues affecting the area's growth and community well-being. Feedback covered topics including the Raumati Village Refresh project, infrastructure and maintenance needs, stormwater management, financial considerations, and community initiatives. These insights reflect community priorities and will help inform planning for the future. The following subsections summarise key themes from the consultation, providing an overview of community perspectives on development over the coming years.

6.1 Raumati Village Refresh Project

There is strong community support for reviving the Raumati Village refresh project, which was previously initiated but halted due to budget reallocations. The Long Term Plan proposes a phased approach to implement this project, with the Raumati Community Board playing a significant role in coordination.

6.2 Infrastructure and Maintenance

Seawall — Ensuring the planned seawall is built and properly maintained is a priority.

Signage and speed limits — There are calls to install proper signage on the former State Highway 1 and consider raising speed limits in certain areas.

Old pool building — Finding a suitable tenant for the old pool building to revitalise the area and make it accessible to the broader community is seen as important.

6.3 Stormwater Management

Issues along Rata Road, exacerbated by expressway development, need addressing. There's a proposal for a "sustained wet peg" monitoring system along the coastline to monitor sea level rise.

6.4 Financial Management and Rates

Rates increase — Significant concern exists about the proposed 17% rates increase. There are calls for the Council to reduce costs, focus on core services, and increase transparency and accountability.

Debt reduction — Strong emphasis on reducing debt while maintaining affordability for ratepayers.

6.5 Housing and Land Use

Mixed views on transferring council housing for older people to a new community housing provider versus selling assets to reduce debt.

6.6 Community Initiatives

- Support for local projects, improved safety measures, extended footpaths and trails
- Investment in diverse, accessible playgrounds and improved accessibility of public amenities
- Prioritising increasing healthcare services.

6.7 Environmental Concerns

Calls for prioritising water infrastructure, developing sports facilities, and maintaining current infrastructure before pursuing new projects.

These insights from the LTP process align with and complement many of the themes identified in the Vision Raumati engagement, particularly around community development, infrastructure improvements, and preserving the area's character while planning for future growth and sustainability.

7 Takutai Kāpiti

Takutai Kāpiti is Council's initiative to adapt to coastal changes. It focuses on how the community and Council can respond to sea level rise and its effects on the environment and infrastructure. This section summarises community feedback on coastal adaptation strategies for Kāpiti.

Data was collected through two methods:

- In-person Community Workshop: Held on 29 July 2023 at the Raumati Bowling Club, with 240 participants.
- Online "Have Your Say" (HYS) survey: Completed by 50 respondents.

The combined efforts yielded over 1,100 responses to the survey questions.

7.1 What do you value most about living in this area?

Respondents were asked what they value most about living in Kāpiti. Table 12 details what respondents most love about living in the area.

Overview of responses

Recreation & leisure — Respondents value access to the sea, proximity to Queen Elizabeth Park, and dog walking as aspects of recreation and leisure. They appreciate the variety of activities available in Kāpiti and the special areas such as the beaches and reserve. Living near the beach is seen as amazing and having a safe swimmable beach is cherished. The community aspect, open spaces, and cultural features such as Kāpiti Island are also highlighted.

Climate & change — Respondents value the climate, clean air, and the marine life. They appreciate the open spaces, parks, and microclimate. The beach being protected by Kāpiti Island is important to them. They also highlight the importance of responsible seaside owners and the initiative taken by people to build sea walls. The seawalls are well-designed and have provided protection and access for all ages and during storms and high tides. Overall, respondents enjoy the climate, the views, and the natural environment, including the beaches and the proximity to nature.

Connections with others — Respondents express positive sentiments about the connections with others in the Kāpiti area. They mention the friendly and supportive community, the sense of belonging, and the close relationships formed in the small local communities. Additionally, they highlight the accessibility of the beach and the opportunities for outdoor activities, as well as the beautiful views and natural environment.

Theme	Subtheme	Frequency
RECREATION & LEISURE		271
	Proximity/access to seaside and beaches	87
	Proximity to nature	42
	Recreational activities	33
	Proximity to the ocean/sea	28
	Hiking/walking access	21
	Proximity to Kāpiti Island	18
	Cycling access	9
	Proximity to sandy beach	9
	Proximity to QE Park	8
	Proximity to estuary	5
	Dog-friendly areas	4
	Proximity to rivers	4
	Proximity to mountains/hills	3
CLIMATE & CHANGE		77
	Enjoy the local climate and weather	25
	Importance of coast for protection and benefits	22
	Enjoy the views	9
	Air quality	5
	Appreciate the sunsets	5
	Protection of local flora/fauna	4
	Stormwater/waste water systems	4
	Lack of pollution	3
CONNECTIONS WITH OTHERS		54
	Community feel and initiatives	34
	Family-oriented environment	13
	Māori community/identity	4
	Historical and cultural significance	3
NETWORKS & CONNECTIVITY		54
	Proximity/access to amenities/services	17
	Accessible and reliable public transport	12
	Airport access	9
	Proximity to Wellington	7
	Proximity to nearby towns	5
	Accessibility	4
PEACE & SAFETY		43
	Safe and secure	17
	Quiet, peaceful living	11
	Space/freedom	8
	Ability to have say/vote	4
	Absence of traffic	3

Theme	Subtheme	Frequency
LIFESTYLE		28
	Appreciate slower lifestyle	12
	Fond of small-town character	10
	Appreciate the village feel	3
	Village atmosphere	3
INCOME & WORK		19
	Enjoy dining experiences	8
	Enjoy visiting local shops	8
	Affordability of living	3
EDUCATION & TRAINING		7
	Access to schools	7
HEALTH		7
	Mental health/personal wellbeing	7
EQUALITY		7
	Preservation for future generations	4
	Inclusive of diversity	3
COMMUNITY PARTNERSHIP		7
	Concern regarding the consultation	7
LAND USE & QUALITY		3
	Low density/lack of urban sprawl	2
	Balanced use of land	1
HOUSING		2
	Availability of housing	2

Table 12: What do you value most about living in this area?

7.2 How important is our coastline to you?

Respondents were asked how important the coastline is to them.

Theme	Subtheme	Frequency
RECREATION & LEISURE		166
	Enjoyment of beach activities	66
	Enjoyment of water sports activities	40
	Enjoyment of other recreational activities	25
	Value of fishing and boating opportunities	20
	Proximity to sandy beach	9
	Significance of access to Kāpiti Island	6
CONNECTIONS WITH OTHERS		75
	Importance of regular beach visits	48
	Consider the coastline home	17
	Benefits of social interactions and connections	7
	Emotional connection to coastline	3

Theme	Subtheme	Frequency
LAND USE & QUALITY		63
	Issues with beach access points and maintenance	16
	Importance of coast for protection and benefits	15
	Coastline defines the local geography	12
	Importance of protecting the coastline	10
	The coastline is very important	6
	Concern about erosion and property protection	4
PEACE & SAFETY		30
	Recognition of natural beauty and views	30
NETWORKS & CONNECTIVITY		29
	Amenities allow for disability access	6
	Concern regarding vehicle access	5
	Identification with coastal community character	5
	Recognition of coastal tourism importance	4
	Appreciate the efforts to maintain the coastline	3
	High tide limits access	3
	Support for local coastal businesses	3
HEALTH		27
	Improvements in mental health and wellbeing	27
RIVER/OCEAN HEALTH		14
	Concern regarding waste and water quality	8
	Appreciation for clean, unpolluted beaches	6
BIODIVERSITY		12
	Importance of wildlife observation/birdwatching	8
	Appreciation for coastal habitat	4
COMMUNITY PARTNERSHIP		8
	Concern regarding the consultation	5
	Council regulations limit use and enjoyment	3
EQUALITY		5
	Issues with accessibility for elderly and disabled	5
CLIMATE		4
	Concern with erosion due to climate events	4

Theme	Subtheme	Frequency
HOUSING		2
	Appreciation for coastal living lifestyle	1
	Managed retreat will be a barrier to access	1
INCOME & WORK		2
	Benefits of beach tourism on local economy	2
EDUCATION & TRAINING		1
	Opportunities for coastal environmental learning	1

Table 13 details how important the coastline is to respondents.

Overview of responses

Recreation & leisure — Respondents express a variety of activities they enjoy in the recreation and leisure category such as walking along the beach, dog walking, sea swimming, cycling along the beach, and sunbathing. The important aspects mentioned include Kāpiti Island access, fishing, boating, walking, community asset events, wider beach and sand at low tide, non-rocky beach, and various recreational activities like horse riding, paddle boarding, photography, yoga on the beach, and beach fishing. The coastline is seen as a valuable community asset providing opportunities for recreation, relaxation, and enjoyment of natural beauty.

Connections with others — Respondents emphasise the importance of connections with others through the regular beachgoer’s community and social interactions. They highlight the easy access to the beach as an asset for their physical and mental well-being. The coastline plays a vital role in their lives, providing a sense of belonging and promoting a sense of community. The beach is seen as a place for relaxation, exercise, and family activities, and it is considered a defining feature of the area.

Land use & quality — Respondents emphasise the importance of the coastline in defining the landscape and the identity of Kāpiti. They highlight the need for protection and access through the development of sea walls, maintenance of walkways, and ensuring easy access to the beach. The coastline is seen as a valuable community asset and a crucial part of a stable environment.

Theme	Subtheme	Frequency
RECREATION & LEISURE		166
	Enjoyment of beach activities	66
	Enjoyment of water sports activities	40
	Enjoyment of other recreational activities	25
	Value of fishing and boating opportunities	20
	Proximity to sandy beach	9
	Significance of access to Kāpiti Island	6

Theme	Subtheme	Frequency
CONNECTIONS WITH OTHERS		75
	Importance of regular beach visits	48
	Consider the coastline home	17
	Benefits of social interactions and connections	7
	Emotional connection to coastline	3
LAND USE & QUALITY		63
	Issues with beach access points and maintenance	16
	Importance of coast for protection and benefits	15
	Coastline defines the local geography	12
	Importance of protecting the coastline	10
	The coastline is very important	6
	Concern about erosion and property protection	4
PEACE & SAFETY		30
	Recognition of natural beauty and views	30
NETWORKS & CONNECTIVITY		29
	Amenities allow for disability access	6
	Concern regarding vehicle access	5
	Identification with coastal community character	5
	Recognition of coastal tourism importance	4
	Appreciate the efforts to maintain the coastline	3
	High tide limits access	3
	Support for local coastal businesses	3
HEALTH		27
	Improvements in mental health and wellbeing	27
RIVER/OCEAN HEALTH		14
	Concern regarding waste and water quality	8
	Appreciation for clean, unpolluted beaches	6
BIODIVERSITY		12
	Importance of wildlife observation/birdwatching	8
	Appreciation for coastal habitat	4
COMMUNITY PARTNERSHIP		8
	Concern regarding the consultation	5

Theme	Subtheme	Frequency
EQUALITY	Council regulations limit use and enjoyment	3
	Issues with accessibility for elderly and disabled	5
CLIMATE	Concern with erosion due to climate events	4
	Managed retreat will be a barrier to access	4
HOUSING	Appreciation for coastal living lifestyle	2
	Managed retreat will be a barrier to access	1
INCOME & WORK	Benefits of beach tourism on local economy	1
	Opportunities for coastal environmental learning	2
EDUCATION & TRAINING	Opportunities for coastal environmental learning	1
		1

Table 13: How important is our coastline to you?

Selected quotes

"We are enjoying living on an accreting coastline as there's more recreational opportunities with a wider beach and flatter, firmer sand at low tide, e.g. Horse riding, dog walking, paddle boarding, kayaking, swimming (safer)."

How important is our coastline to you?

"I moved from Wellington to Raumati for the coastline. In retirement I wanted access to great walks and cycling in an environment that had all the facilities described above. I also wanted a great place for my grandchildren to visit (who do not live in area) - they love coming here!"

How important is our coastline to you?

7.3 How concerned are you about coastal hazards like erosion and flooding, and why?

Respondents were asked how concerned they are about coastal hazards like erosion and flooding and why they were concerned about these hazards. Table 14 provides an overview of the level of concern of respondents and the reasons for their concern.

Overview of responses

Community partnership — Respondents expressed concern about the lack of community involvement and consultation in the decision-making process. They also questioned the science and modelling used in the Jacobs Report, particularly its failure to consider the impact of seawalls. Additionally, there were concerns about the transparency and effectiveness of the CAP project, as well as the need for proactive measures to address coastal hazards and protect properties.

Land use & quality — Respondents express a range of sentiments regarding the topic of land use and quality. Some are very concerned about erosion and coastal hazards, while others are not concerned at all. Concerns include the need for safeguarding and defending the coastal lifestyle, the cost of managed retreat, and the impact of climate change on the coast. The effectiveness of seawalls and the natural occurrence of erosion are also mentioned.

River/ocean health — Respondents express concerns about various aspects of river/ocean health. Changing currents and floodwaters from rivers are mentioned as significant risks that can impact beaches. Respondents also highlight the importance of maintaining seawalls and express concerns about poor water management and lack of maintenance of waterways.

Theme	Subtheme	Frequency
COMMUNITY PARTNERSHIP		89
	Concern about inadequate council planning/action	27
	Concern about governance by CAP	20
	Concern about lack of community consultation	17
	Concern about the reliability of Jacobs Report	12
	Concerned retreat is the predetermined outcome	8
	Concern about lack of risk notification	5
LAND USE & QUALITY		55
	Not concerned about coastal hazards	31
	Concerned about coastal hazards	24
RIVER/OCEAN HEALTH		51
	Concern about lack of seawall maintenance/builds	21
	Concern about stormwater management	13
	Concern about beach shape and sand movement	10
	Concern about higher tide lines	4
	Concern about lack of maintenance of waterways	3
HOUSING		39
	Concern about property value and insurance	19
	Concern about Council regulations for defence	9
	Concern about property loss or damage	8
	Concern about rising property rates	3
CLIMATE & CHANGE		24
	Scepticism of scientific modelling and scenarios	16
	Concern about extreme weather events	5
	Scepticism about sea level rise threat	3
NETWORKS & CONNECTIVITY		12
	Concern about lack of maintenance generally	8
	Desire for proactive infrastructure maintenance	4
BIODIVERSITY		8
	Appreciation for dune protection	4
	Concern about wildlife habitat protection	4
CONNECTIONS WITH OTHERS		4
	Concern about beach access	4

Theme	Subtheme	Frequency
HEALTH		4
	Concern about impact on mental health	4
WATER		3
	Concern about sewage system vulnerability	3
EDUCATION & TRAINING		3
	Need for coastal processes education	2
	Need for international management examples	1
INCOME & WORK		2
	Concern about impact on livelihood	1
	Concern about local economy and business impacts	1

Table 14: How concerned are you about coastal hazards like erosion and flooding, and why?

Selected quotes

"Highly concerned, as this will impact coastal properties and infrastructure. You should also include incursions into groundwater systems. The issue is the timeframe of the causes of coastal hazards. These are mainly sea level rise and increase in prevalence and strength of storm events, and they are still uncertain with very recent research suggesting change may be faster than currently expected."

How concerned are you about coastal hazards like erosion and flooding, and why?

"We feel it's a predetermined outcome e.g. with managed retreat already suggested for over 1000 in north Kāpiti now in the media."

How concerned are you about coastal hazards like erosion and flooding, and why?

"Why have MfE (Ministry of the Environment) guidelines been used for purposed of planning? CAP should be following the NZ Coastal Policy Statement statutory guidelines which require a risk assessment, not a vulnerability assessment. The Jacobs report is a vulnerability assessment and a waste of ratepayers money."

How concerned are you about coastal hazards like erosion and flooding, and why?

7.4 How do you think our coastline should be protected?

Respondents were asked how they thought the coastline should be protected. Table 15 provides an overview of suggestions made by respondents.

Overview of responses

Community partnership — Respondents have a range of opinions about community partnership. Some feel that there hasn't been enough consultation with the community and that the process is biased. They suggest using a risk assessment instead of a vulnerability assessment and want transparency in the information and data being used. There are also calls to disband the current Coastal Advisory Panel and prioritise protecting the coastline with seawalls.

River/ocean health — Respondents emphasise the importance of protecting the coastline through engineered solutions such as seawalls, revetments, and groynes. They advocate for the maintenance, upgrade, and proper design of existing seawalls to ensure their effectiveness. Suggestions also include better stormwater management, consideration of rivers to prevent pollution into the sea, and long-term planning for the protection of the coast.

Land use & quality — Respondents express a variety of opinions regarding land use and quality. They emphasise the need for a case-by-case approach, opposing managed retreat and instead advocating for well-designed hard structures like seawalls and roads. They also highlight the importance of protecting key facilities and infrastructure, such as the business district around the Council sewer main.

Theme	Subtheme	Frequency
COMMUNITY PARTNERSHIP		115
	Support for more inclusive/transparent engagement	25
	Concern about governance by CAP	21
	Criticism of consultation process	15
	Support for medium/long-term plan	9
	Concern about the reliability of Jacobs Report	8
	Concern about council spending/rates	7
	Concern about representation in decision-making	6
	Support for inclusion of local/expert knowledge	6
	Support for learning from other examples	6
	Concern about KCDC ability to have impact	4
	Concern about inadequate council planning/action	4
	Support public-private collaboration in defense	4
RIVER/OCEAN HEALTH		98
	Support for improved/additional seawalls	40

Theme	Subtheme	Frequency
	Support for improved stormwater management	15
	Support for improved/additional coastal defenses	13
	Maintain current level of coastal protection	7
	Support for improved waste management	6
	Concern about interference with natural process	5
	Support for river maintenance/pollution prevention	5
	Support for traditional/natural coastal defenses	4
	Support for general protection from erosion	3
LAND USE & QUALITY		28
	Support for case-by-case approach	11
	Opposed to managed retreat	7
	Support for protection of public infrastructure	4
	Concern regarding high-density coastal development	3
	Support for managed retreat	3
BIODIVERSITY		25
	Support for dune restoration and management	9
	Support for increased planting	8
	Support for protecting/expanding wetlands/reserves	5
	Support for improved protection of wildlife	3
CLIMATE & CHANGE		19
	Scepticism about sea level rise and climate change	9
	Concern about climate change fear-mongering	6
	Concern about environmental health impacts	4
EQUALITY		11
	Concern about distribution of protection costs	11
HOUSING		10
	Support for protecting existing coastal properties	4
	Concern about impacts on insurance	3
	Concern about impacts on property value	3
NETWORKS & CONNECTIVITY		8
	Support for improved access to beach/ocean	8

Theme	Subtheme	Frequency
EDUCATION & TRAINING		3
	Support for public information on coastal issues	3
PEACE & SAFETY		1
	Concern about peaceful living	1

Table 15: How do you think our coastline should be protected?

Selected quotes

"Latest protection technology for seawalls (as in Wellington airport) should be used here to protect coastline."

How do you think our coastline should be protected?

"Taking note of worldwide success stories for protecting communities."

How do you think our coastline should be protected?

"Managed regional growth."

How do you think our coastline should be protected?

Produced by PublicVoice Limited

Suite 2, 5 Bouverie Street

Petone

Lower Hutt, 5012

Ph: (04) 909 7463

Email: info@publicvoice.co.nz

The views expressed in this report are those of the author(s) and do not necessarily reflect the position of the Kāpiti Coast District Council. The Kāpiti Coast District Council does not accept any liability for claims arising from the reports content or reliance on it.