



Vision Kāpiti – District Report

Summary Report

November, 2024

About PublicVoice

PublicVoice Limited is a leading research and engagement consultancy headquartered in Wellington, New Zealand. We concentrate on public policy research and consultation, providing services to various local and central government agencies throughout New Zealand. To learn more about our work, please visit www.publicvoice.co.nz.

Version:	V1.0
Date:	5 November 2024
Author(s):	Jared Bothwell, Dianne Long

Contents

Contents.....	1
1 Executive summary	4
1.1 Why Vision Kāpiti 2060?	4
1.2 Overview of Vision Kāpiti engagement and feedback	5
2 Central Themes	9
2.1 Place	10
2.2 People.....	10
2.3 Partnership.....	12
3 Key findings	13
3.1 Place	13
3.2 People.....	24
3.3 Partnership.....	43
3.4 Comparison of District Vision engagement results and Vision follow up results	45
3.4.1 Key Similarities	45
3.4.2 Key Differences	45
3.4.3 Implications for District Vision Refinement.....	46
3.5 Comparison of District Vision engagement results and Vision follow up results across the different local areas.....	47
3.5.1 Key Similarities Across All Communities	47
3.5.2 Key Differences	47
4 Data analysis methodology.....	50
4.1 Survey data analysis	50
4.2 Key findings analysis.....	50
4.3 Reporting	50
Phase One: Gathering initial views: District Vision Engagement Project.....	51
5 Councillors' Top 10 strategic priorities	51
5.1 Have we got them right?	51
5.2 What actions can we take?	54
6 Haumarū Safety.....	55
6.1 What are your safety concerns?.....	55
6.2 How could safety in the district be improved?	56
7 Kainga Housing	58
7.1 Your concerns about housing in Kāpiti?	58
7.2 What should we focus on?	59
8 Landing a vision for Kāpiti together.....	61
8.1 What makes Kāpiti feel like home?	61
8.2 What changes do you want to see in Kāpiti now?	67
8.3 What change do you want to see in Kāpiti in our next generation?.....	70
9 Te Mahi me te whai moni Employment and income	75
9.1 How can Council and government better support business?	75

9.2	What needs to happen to improve opportunities?	77
10	Nga hononga Networks and connections	78
10.1	What more can we do?	78
11	Te Matauranga Education.....	82
11.1	What needs to change in terms of education services?	82
11.2	What more can be done to strengthen pathways?	83
12	Te Tapoi Tourism.....	84
12.1	What more can be done?	84
13	Hauora Health.....	86
13.1	What are you most concerned/worried about in terms of provision of health care in Kāpiti?	86
13.2	What should we focus on to help people in Kāpiti lead healthy lives?.....	88
14	Taiao Environment.....	91
14.1	What are you most concerned/worried about in terms of our natural environment?	91
14.2	What should we focus on to help improve the condition, health and resilience of our natural environment?	92
15	Te whakamahinga whenua Land use	93
15.1	How could we better use land and public spaces in Kāpiti?	93
15.2	What else could Council do to enable our community to grow and flourish?	95
16	Pūngao Energy	96
16.1	Do you have concerns about access to affordable, sustainable energy in our District?	96
16.2	What else could Council do to support access to energy?	97
17	Kai Food	98
17.1	Do you have concerns about food supply or production in our District?.....	98
17.2	What else could Council do to support safe and sustainable food supply, production, and sale?.....	98
	Phase Two: Testing what we have heard so far.....	100
18	Vision follow up survey	100
18.1	Does this reflect what's important to you?.....	100
18.2	Is there anything missing?	102
19	Ki te Āpōpō Rangatahi.....	108
19.1	What's your wish for Kāpiti?	108
	Broader community engagement	110
20	Long Term Plan 2024–34	111
20.1	What is your preferred option for how the Council fund the increased cost of three waters services?	111
20.2	What is your preferred option for rate increases to reduce Council debt?.	113
20.3	What is your preferred option for how we manage Council housing for older people?	115
20.4	What is your preferred option for how the Council funds climate-related activities?	117
20.5	Public feedback on updated Council policies	119
20.6	Council fees, Alcohol Licensing Fees Bylaw, and democratic processes .	121

20.7	Additional comments on the Long Term Plan	122
21	Waikanae Library.....	123
21.1	Current Use.....	124
21.2	What is your preferred option for location of the new library?	124
21.3	What are the most important aspects for Council to consider?	126
21.4	Project Objectives	127
21.5	Other Comments.....	129
22	Needs Assessment: Insights from Kāpiti young people	130
23	Te Newhanga Kāpiti Community Centre.....	131
23.1	What are at least three things that you would like to see offered at a community facility or space?	132
23.2	How important are community spaces like the Te Newhanga Kāpiti Community Centre to the community?	135
23.3	Why do you say that?.....	136
23.4	Please tell us the extent to which you disagree or agree that there is a good range of community facilities, social services, activities, programmes and events in the Kāpiti area.....	138
23.5	Why do you say that - and what, if anything, is missing?	139
23.6	Do you have any other comments or suggestions about community spaces in the Kāpiti area?	141
24	Takutai Kāpiti.....	144
24.1	What do you value most about living in this area?	145
24.2	How important is our coastline to you?	148
24.3	How concerned are you about coastal hazards like erosion and flooding, and why?	151
24.4	How do you think our coastline should be protected?	154
24.5	Who should pay?	160
25	Paekākāriki: What Next? Planning for vibrant, equitable and sustainable village life after the opening of Te Ara Nui Te Rangihaeata.	161
26	Friends of Te Horo Beach: Participatory Mapping Activity.....	162
27	Social and Community Sector Vision Submission	163

1 Executive summary

1.1 Why Vision Kāpiti 2060?

A clear district-wide vision will help guide planning, decision making, programmes, services, and advocacy, for decades to come.

Elected members want to hear from their communities, about what matters most, what change people want to see and their aspirations for the future of our District.

The first stage is to develop a Vision for the District and its underlying communities.

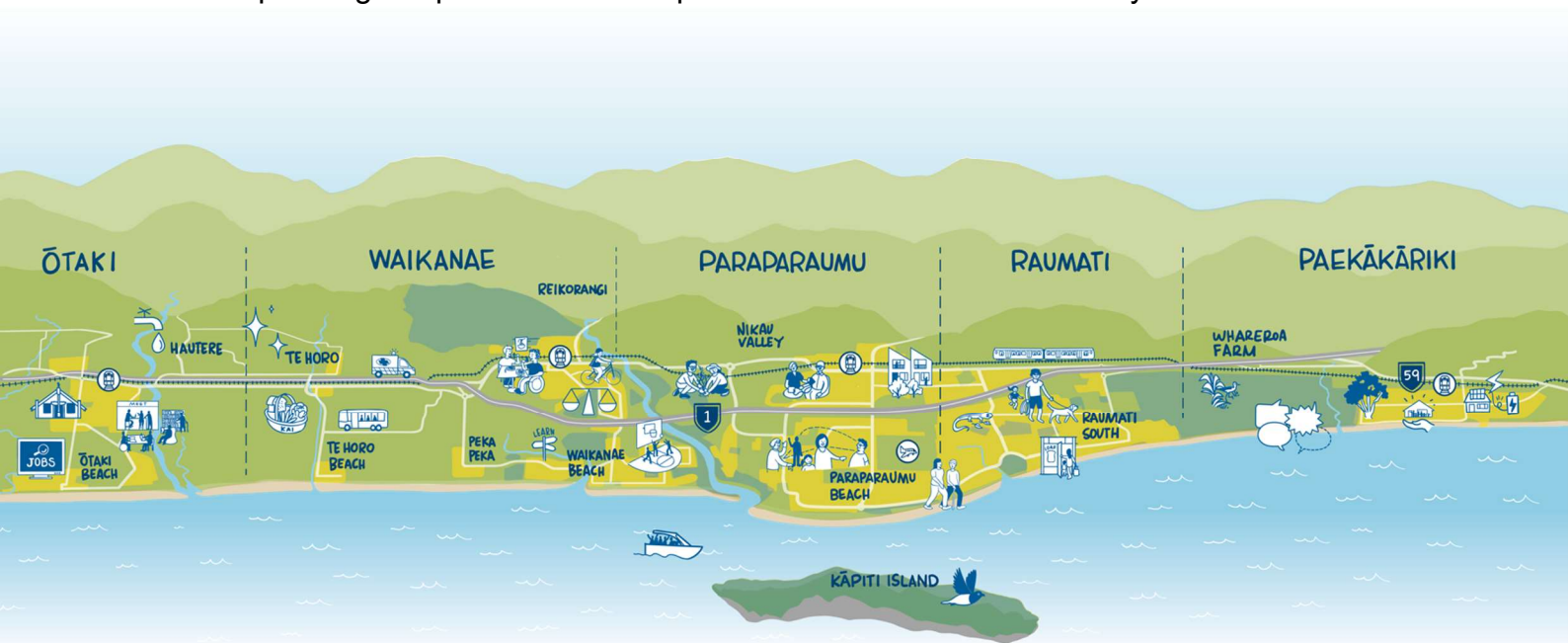
This will be followed by two further stages:

- Identifying and testing pathways and priorities for achieving our Vision; and finally
- Developing a blueprint for action, mapping out our key steps and moves to realise our Vision.

Once complete, the Vision and blueprint will outline what things will be prioritised over the next 30 years (to 2060), and how Council will work with its iwi partners, central government, and key stakeholders to collectively achieve the Vision.

The districtwide Vision for Kāpiti was developed concurrently with local visions for Ōtaki, Waikanae, Paraparaumu, Raumati, and Paekākāriki. The local Visions will update and replace the previous Local Outcome Statements, and feed into the districtwide Vision, to deliver a cohesive and overarching Vision for Kāpiti.

When we set out on this engagement journey we aimed to hear from a representative sample of our community. We aimed to hear from about 2,500 people, which represents about 5% of our community. We heard from about 2,775 people with direct feedback, and incorporated insights from other engagements that included feedback from a further 5,510 people. We are confident our goal of incorporating a representative sample of the views of our community has been met.



1.2 Overview of Vision Kāpiti engagement and feedback

Feedback from engagement has been captured through two phases of engagement. This is summarised below.

Phase One: Gathering initial views

Between August 2023 and April 2024, qualitative information was gathered through a range of engagement activities.

We received feedback from about 2,284 people across our district in this phase of engagement. A summary of response numbers in phase one is in the table below.

- An online feedback platform on the following topics:
 - Councillors' 10 strategic priorities 320 contributors with
 - Haumaru | Safety 538 responses and
 - Kainga | Housing 967 feedback points
 - Landing a vision for Kāpiti together
 - Te Mahi me te whai moni | Employment and income
 - Nga hononga | Networks and connections
 - Te Matauranga | Education
 - Te Tapoi | Tourism
 - Hauora | Health
 - Taiao | Environment
 - Te whakamahinga whenua | Land use
 - Pūngao | Energy
 - Kai | Food

- Local surveys led by Community Boards 656 contributors with 4,449 feedback points

- Feedback at the Engagement Hubs as part of Vision Kāpiti 1,089 contributors with 1,262 feedback points

- Feedback from pop-up engagements and events 183 contributors with 313 feedback points

This feedback was summarised and presented to local communities for further testing as part of Phase Two. This included a detailed report which summarised feedback from all sources, and feedback received on local survey questions.

Phase Two: Testing what we have heard so far

Between May and July 2024, Council shared the summary of feedback received during Phase One with the community to test whether what had been captured so far reflected what was important to people and if there was anything missing.

We received feedback from 451 people in this round of engagement.

A summary of response numbers in Phase Two is in the table below.

District Vision — Summary Report

- | | |
|---|--|
| • An online survey asking if what is captured so far reflects what's important and if there is anything missing. | 238 contributors with 323 responses with 824 feedback points |
| • Vision Kāpiti Engagement Hubs - boxes at our local libraries in Ōtaki, Waikanae and Paraparaumu, and displays and feedback boxes in our Paraparaumu Service Centre and Coastlands Aquatic Centre. | 41 contributors with 72 feedback points |
| • Information gathered at the Kāpiti Coast District Council table at the Ki te Āpōpō Rangatahi Expo on 21 June 2024 | 49 contributors' responses with 52 feedback points |
| • Feedback from Coastlands Mall over 14 and 15 June 2024 | 61 contributors' feedback forms submitted with 169 feedback points |
| • An evening webinar session on 2 July | 7 contributors' feedback points |
| • Other events/engagement by community boards; Paekākāriki Community Board workshop, additional Raumati engagement | 138 contributors |

In addition to the above engagements, elected members sought to engage and seek feedback with local residents through a number of other ways to encourage them to provide input, but also to hear people's thoughts directly and ensure the final Vision reflected what they have been hearing. This has included:

- Discussion at pop-up engagements and events like the Kāpiti Food Fair, Coastlands and Youth Council meetings
- Discussion with Council advisory groups
- Flyer drops at train stations
- Newspaper, social media and radio ads
- Targetted messaging to special interest groups such as dog owners and those interested in the arts through Council's mailing lists
- Displays in parks
- Discussion with local schools, churches, business forums, retirement village groups, and other interest groups and organisations.

We also thank Capable Sector Project participants for their input, representing:

- Age Concern Kāpiti

- Benefit Advocacy Kāpiti
- Cancer Society Wellington Division
- Citizens Advice Bureau Kāpiti
- Citizens Advice Bureau Ōtaki
- Coast Access Radio Trust
- Dementia Wellington
- Energise Ōtaki Charitable Trust
- Hora Te Pai
- Kaibosh Food Rescue
- Kāpiti Impact Trust
- Kāpiti Meals on Wheels (Red Cross Group)
- Kāpiti Youth Support – KYS
- Kāpiti Women’s Health Collective Inc
- Menzshed Kāpiti
- Ngā Hapū o Ōtaki
- Ōtaki Community Network Forum
- Ōtaki Health and Wellbeing Advisory Group
- Society of St Vincent de Paul, Kāpiti Conference
- Te Ara Korowai
- Te Puna Oranga o Ōtaki
- The Road Forward
- The Salvation Army
- Volunteer Kāpiti

You can also read more about how our Community Boards supported engagement in our local communities across Ōtaki, Waikanae, Paraparaumu, Raumati and Paekākāriki in our local vision reports.

Other community feedback included

In addition to feedback on the Vision process, several recent community engagements have provided feedback on what’s important for Kāpiti residents. We have incorporated relevant feedback from the following engagement projects.

- Long Term Plan 2024-2034 feedback

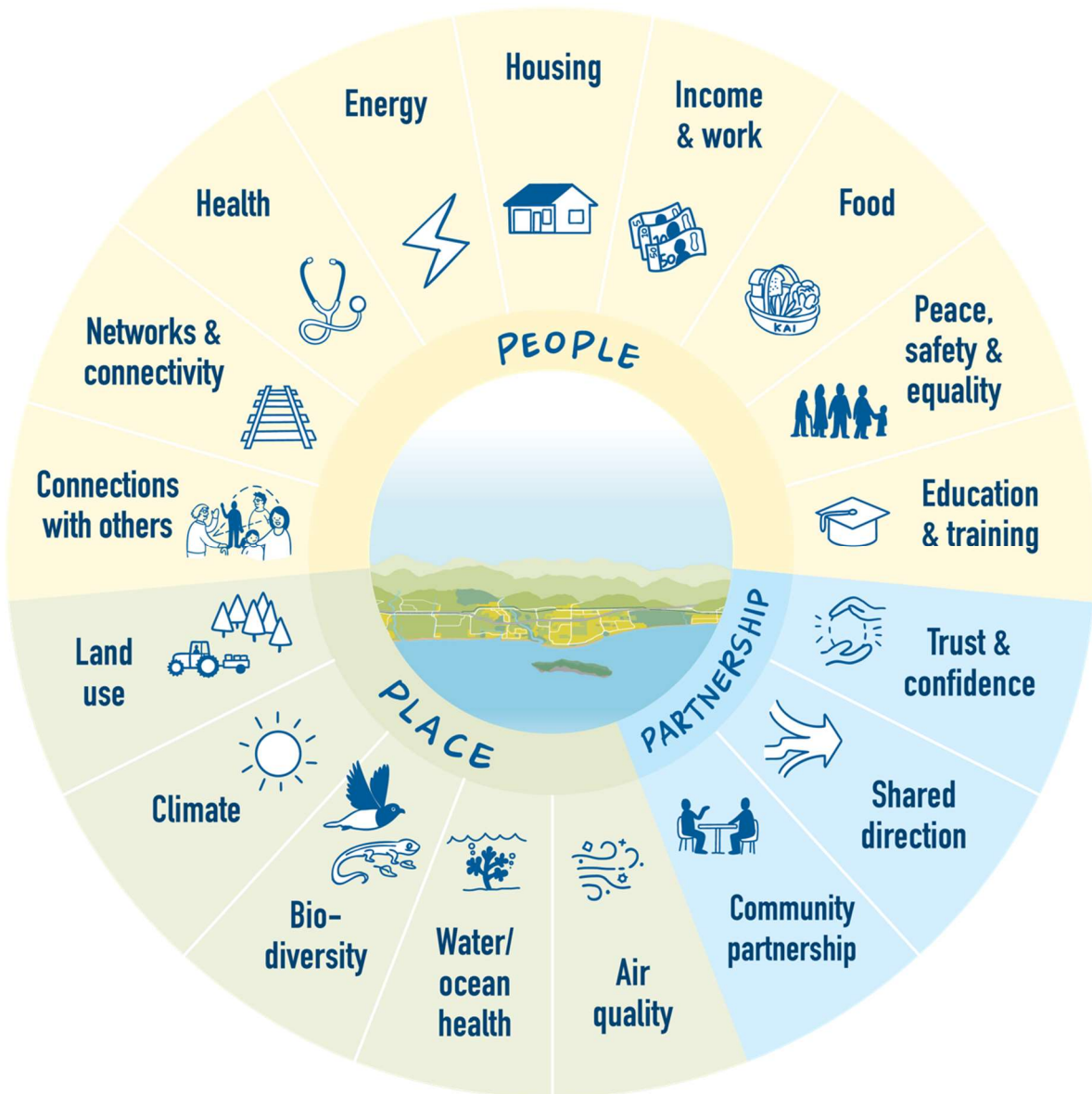
Key insights identified from the full set of feedback (371)

- Engagement on the Waikanae Library project (1,598 feedback points)
- Engagement on the Waikanae Library project (1,997 responses with 4,784 feedback points)
- A Youth Needs Survey received from Zeal (Key insights from 94 responses)
- Engagement on community needs related to the Te Newhanga Community Centre project (Key insights from 743 responses with 3,099 feedback points)
- Feedback on values received in the Takutai Kāpiti Project (Key insights from 2,261 responses with 3,994 feedback points)
- Paekākāriki: What next? feedback (26 qualitative, semi-structured interviews, 2 focus groups with primary school children, and 2 participatory development workshops.)
- Friends of Te Horo Beach: Participatory Mapping Activity feedback (18 responses)



2 Central Themes

This section summarises the central themes that emerged from the community engagement process. It highlights the dominant priorities and aspirations expressed by Kāpiti Coast residents across various domains of the Doughnut Economic Framework.



The themes presented here synthesise feedback from multiple engagement channels. By incorporating these supplementary sources, we gain a more comprehensive understanding of community priorities and concerns. This multi-faceted approach allows us to identify recurring themes across different engagement processes, providing a robust foundation for the future.

The inclusion of Long Term Plan insights offers valuable context on infrastructure priorities, financial considerations, and community initiatives. The Waikanae Library

consultation and Te Newhanga project highlight the importance of accessible, multi-purpose community spaces and amenities. The Youth Needs Assessment and Paekākāriki project provide crucial perspectives on the aspirations and challenges faced by specific demographics. The Takutai Kāpiti and Te Horo Beach engagements emphasise environmental priorities and community values. The Social and community sector submission offers a social sector lens on key values and principles. Together, these additional sources enrich and validate the themes identified in the primary Vision Kāpiti engagement, ensuring a holistic view of community aspirations across the District.

2.1 Place



Āhurangi | Climate: The community emphasises the importance of adopting a comprehensive approach to tackle climate change, focusing on adaptation and mitigation strategies, efficient waste management and recycling systems, and improving sustainable transport options.



Hauora Awa/Moana | River/Ocean Health: The community places great importance on environmental conservation, particularly when it comes to water. Proximity to rivers, estuaries, beaches, and the ocean is highly valued, with residents expressing a strong commitment to preserving and maintaining the quality of our aquatic environments.



Kanorau Koiora | Biodiversity: The community highly values the Kāpiti Coast's natural environment, advocating for rewilding and regeneration to support native biodiversity. Enhancing and protecting natural spaces, pest control programs, and predator-free zones are top priorities.



Whakamahi/Hauora Whenua | Land Use & Quality: The community recognises the need for strategic growth that accommodates new housing developments while also preserving the area's unique character. Key priorities include providing a balanced mix of housing options, protecting valuable agricultural land, and ensuring infrastructure supports new housing while addressing flood risks.



Wai | Water: The community expressed concern about overall water quality (both in natural bodies and water supply) and three waters management, signalling a perceived need for improvements in water services, particularly stormwater networks as well as a desire for Kāpiti to protect water sovereignty.

2.2 People



Aiowhaitika mō te tangata | Peace & Safety: Residents highly value the area's relaxing and peaceful atmosphere, appreciating its safety and security. Suggestions for improvement include addressing pedestrian

safety, animal control, and improving overall security through increased police presence and neighbourhood watch programs.



Hanga Whare | Housing: The community expressed their desire for a multifaceted approach to housing challenges, which balances the need for densification with character preservation and the provision of diverse housing options. Affordability, improved infrastructure, and housing accessibility for the elderly and those with health issues are key concerns.



Hauora | Health: Residents value access to activities and facilities that promote and enable healthy lifestyles. Key priorities include improved access to healthcare services and local facilities, particularly for the elderly and those with disabilities.



Kai | Food: Residents have a keen interest in supporting local food systems and ensuring access to diverse dining options. There is strong community support for the development of community gardens and urban agriculture. There is a clear call for increased competition in the food retail sector to benefit consumers and support local producers. Community members express concerns about the use of arable land for housing developments.



Mātauranga | Education & Training: Expanding educational opportunities through adult education, environmental learning, and history trails, is a key focus for the community, emphasising a desire to see innovating education and employment pathways. Increasing school capacity and updating infrastructure are also important priorities.



Ohunga | Income & Work: Residents expressed a need to revitalise the Kāpiti Coast by transforming vacant properties, as well as supporting local businesses and tourism operations. Supporting higher-value employment and flexible workspaces are also key priorities.



Ngā Hono | Networks & Connectivity: The community are interested in improved and sustainable transport options, including better public transport services, and enhanced cycling and pedestrian infrastructure. Road safety, lighting, and internet connectivity are also key concerns.



Te hononga ki ētahi atu | Connections with others: Residents in Kāpiti envision a thriving and inclusive community. They value a strong sense of belonging and prosperity for all ages. The community feedback places strong emphasis on equity, particularly for Māori, fostering kindness and friendliness. Collaborative spirit in cultural spaces is cherished and crucial for communal wellbeing and interconnectedness. There is a strong focus on supporting young people. The community strongly values inclusivity and belonging and prioritises enhancing local

arts, culture, and heritage through collaborative initiatives and new facilities. Upgraded public amenities, youth-focused activities, and communal housing are key priorities to foster a thriving, supportive environment.



Hihiri | Energy: The community feedback indicates strong support for the shift towards renewable energy, with repeated calls to increase support for solar energy, and adopt solar PV for local Council infrastructure, although there's opposition to wind turbines. The community supports adoption of hybrid and electric vehicles, as well as increasing access to EV chargers. Concerns were raised about rising energy costs, and suggestions include requiring solar panels on new builds, reducing petrol prices, and encouraging competition among energy suppliers.

2.3 Partnership



He Waka eke noa/A Shared Waka | Community Partnership: The community calls for a connected and inclusive environment with improved governance and democratic engagement that prioritises transparency and accountability within the Council. Environmental stewardship, and fostering community spirit through events, arts, and cultural activities are key focus areas.

3 Key findings

This section presents an overall summary of the insights and themes from the Vision Kāpiti engagement process. It synthesises the feedback received across all the questions and topics covered during the engagement, providing an overview of the community's aspirations, concerns, and priorities for the future of Kāpiti. The summary is split into the three broad categories of Place, People and Partnership.

To facilitate a holistic understanding of the community's needs and desires, the findings have been organised and analysed through the different lenses of the Doughnut Economic Framework.

The summary is structured around the key community needs, highlighting the dominant themes, sub-themes, and specific suggestions that emerged under each category.

3.1 Place

Below is a summary of the key findings related to 'Place'.





Āhurangi | Climate feedback emphasises the community’s diverse views on environmental issues, particularly climate change. Some voice concerns about sea level rise, extreme weather, and erosion, calling for adaptation strategies and enhanced emergency preparedness. Others are sceptical of climate change or scientific modelling. Environmental quality is a key focus, with residents highlighting air and water quality, waste management, and ecosystem health. Many appreciate local natural assets and advocated for their protection. Sustainability initiatives, including improved recycling, sustainable transport, and energy projects, are supported. The community shows varying levels of concern about climate impacts, with some prioritising mitigation efforts and others focusing on immediate environmental issues.

The most common themes that emerged from community feedback were:

Efficient waste management & recycling systems

Residents express a strong desire for improved waste management and recycling systems in Kāpiti. Suggestions include Council taking responsibility for kerbside recycling collection, providing more recycling bins in public areas, and establishing green waste facilities in each township. There are calls for a Council-managed, unified rubbish collection system to reduce the number of trucks on roads. Many want to see a return of recycling stations,

particularly in Waikanae. Residents emphasise the need for better education about recycling and waste reduction. Some propose initiatives like repair cafés, community composting, and food waste collection. Overall, there's a clear focus on creating more efficient and environmentally friendly waste management practices.

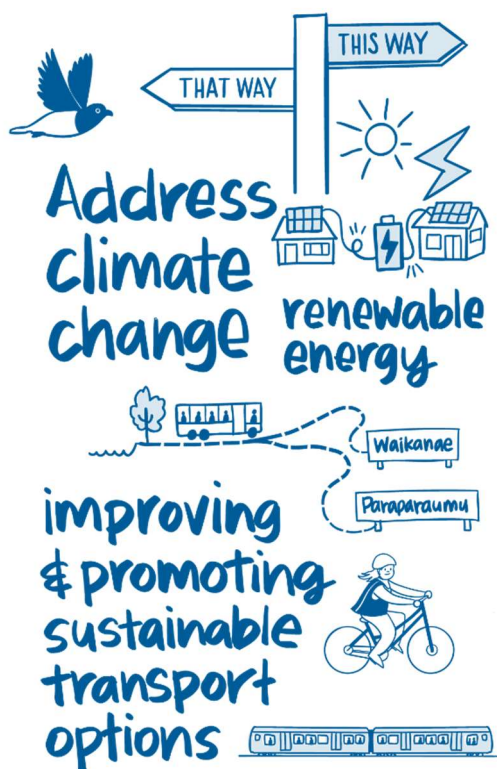


Enjoy the local climate & weather

Residents of Kāpiti consistently praise the area's favourable climate and weather as a key attraction. Many appreciate the mild temperatures, abundant sunshine, and cooling sea breezes, noting that the region is often warmer and more pleasant than nearby Wellington. The microclimate is seen as ideal for outdoor activities, gardening, and general wellbeing. Some mention the area's suitability for growing food and its positive impact on lifestyle. While a few express concerns about changing weather patterns due to climate change, most view the local climate as a significant asset, contributing to the region's appeal as a place to live and visit.

Focus on climate change

Residents express a range of views on climate change, with many calling for increased action and resilience planning. There's a strong desire for initiatives to reduce carbon emissions, such as improving public transport, promoting electric vehicles, and increasing renewable energy use. Some advocate for nature-based solutions, including wetland restoration and tree planting. However, there's also scepticism from some residents about the severity of climate change impacts. In addition, the community considers these solutions part of "business as usual" for Council, rather than introducing a new targeted climate action rate based on capital value to fund these initiatives. Many want the Council to prioritise climate considerations in all decision-making, particularly regarding coastal management and infrastructure development. Overall, there's a clear call for a balanced, informed approach to addressing climate challenges.



Other key themes included:

- Enhance natural spaces (i.e. bike path)
- Focus on food resilience
- Importance of coast for protection and benefits.



Hauora Awa/Moana River/Ocean Health

Hauora Awa/Moana | River/Ocean Health related feedback demonstrates the community's appreciation of its proximity to beaches, rivers, and wetlands. There's strong support for improved coastal defences, including seawall maintenance and stormwater management. Concerns are raised about erosion, flooding, and water quality in various waterways. Residents appreciate clean beaches and seek better waste management. Some worry about human interference with natural processes, while others support traditional coastal defences. Specific local issues include the Waimeha Stream, Raumati South Seawall, and inland water table. Overall, there's a call for balanced coastal management, improved waterway maintenance, and enhanced monitoring to ensure safe, clean aquatic environments while addressing erosion and flooding risks.

The most common themes that emerged from community feedback were:

Proximity & access to the seaside, beaches & the sea

Residents overwhelmingly value the coastal location and easy access to beaches. The seaside is seen as central to the area's identity and lifestyle, offering numerous recreational opportunities. Many appreciate the ability to walk from their homes to the beach. Residents emphasise the importance of maintaining and

improving beach access, including walkways and seawalls. There are concerns about erosion and flooding affecting beach access in some areas. Overall, proximity to the sea is considered a key attraction and integral to the character and community wellbeing of Kāpiti.

Proximity to rivers

Residents highly value local rivers, particularly the Waikanae and Ōtaki rivers, as significant natural assets. Many appreciate the easy access to river walks and cycleways, which provide recreational opportunities and connect communities. The rivers are seen as important for wildlife, especially birdlife, and contribute to the area's biodiversity. Some residents express concerns about flooding and erosion along riverbanks, calling for better maintenance and management. There's a desire to protect and enhance river environments, including improving water quality and restoring wetlands. Overall, proximity to rivers is viewed as a key feature of the natural landscape and lifestyle.

Other key themes included:



- Support for improved stormwater management
- Concern about beach shape and sand movement
- Support for improved and additional coastal.

Support for improved & additional seawalls

Many residents express support for improved and additional seawalls as a primary defence against coastal erosion and flooding. There's a strong desire for well-designed, professionally engineered seawalls along vulnerable coastlines. Some advocate for curved designs or mixed systems incorporating revetments and groynes. Residents emphasise the need for proactive maintenance and upgrades of existing seawalls. There's a call for a coordinated, district-wide approach rather than disjointed private efforts. Some view seawalls as essential for protecting properties and infrastructure, while others express concerns about potential environmental impacts. Overall, there is a significant demand for robust coastal protection measures, with seawalls seen as a key component.





Kanorau Koiora Biodiversity

Kanorau Koiora | Biodiversity related feedback shows that residents deeply value their natural environment, including beaches, waterways, parks, and proximity to Kāpiti Island and the Tararua Ranges. There is strong support for environmental conservation, with emphasis on dune restoration, increased planting, and wildlife protection. Concerns were raised about habitat preservation, pest control, and the impact of development on green spaces. The community advocates for biodiversity regeneration, wetland expansion, and improved ecological corridors. Specific issues include dune maintenance, tree felling, and invasive species management. Residents seek a balance between development and environmental protection, calling for more green spaces, community gardens, and sustainable practices like reduced pesticide use and native tree preservation.

The most common themes that emerged from community feedback were:

Protect beaches & waterways & green Kāpiti

The feedback strongly emphasises the need to protect the natural environment, particularly beaches, waterways, and green spaces. Key priorities include preserving and enhancing coastal dunes, wetlands, and river mouths; restricting vehicle access on beaches; increasing native planting and restoring biodiversity; managing pests and weeds; and mitigating the impacts of climate

change and sea level rise. Maintaining access to nature is also highlighted as important. Overall, the feedback calls for a proactive, long term approach to environmental protection and sustainability, balancing development while preserving unique natural assets.



Proximity to nature

The feedback clearly highlights the high value placed by the Kāpiti community on their proximity to nature. Residents deeply appreciate the easy access to a diverse range of natural environments, from the beaches and coastal dunes to the hills, rivers, and native forests. This proximity provides ample opportunities for recreation, relaxation, and appreciating wildlife, all of which contribute to the wellbeing of the local population. Leveraging natural assets can also promote sustainable living, education and nature-based tourism, while strengthening community appreciation.

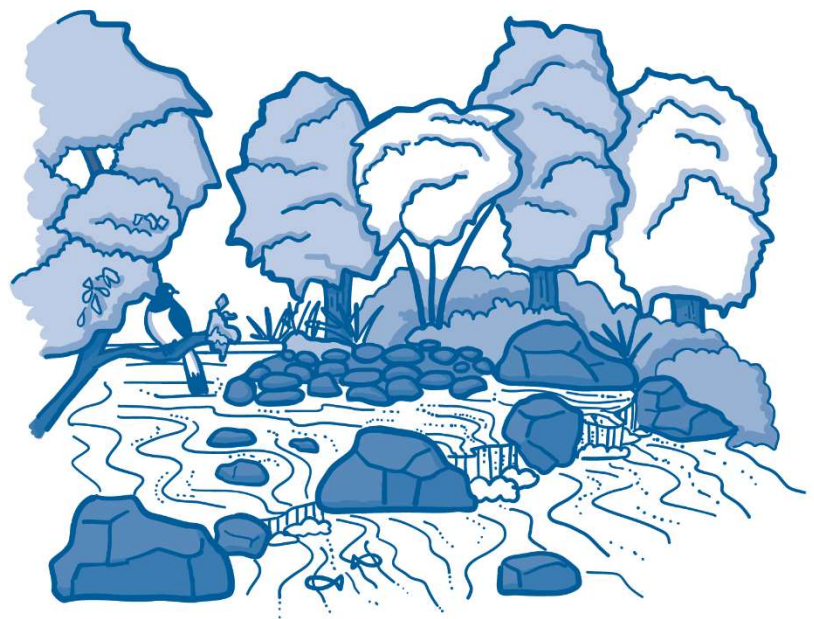
Enjoy visiting local parks & reserves

The Kāpiti community deeply values the local parks, reserves and natural spaces throughout the region, which are seen as essential to quality of life. Residents thoroughly enjoy being able to easily access and spend time in these areas, whether for recreation, relaxation or appreciating the local flora and fauna. Maintaining and enhancing these natural assets is therefore a top priority, with suggestions including improving trail networks, increasing native plantings, controlling pests and weeds, and ensuring sufficient parking and amenities. Improving accessibility, particularly for those with limited mobility, is also important.

Other key themes included:



- Promote natural assets to visitors
- Support for dune restoration and management
- Proximity to Kāpiti Island.





Wai | Water related feedback highlights significant concerns about water management in Kāpiti. Key issues include water quality and supply, sewage system vulnerability, and the impact of development on rivers and wetlands. Residents call for improved water services, better infrastructure, and increased public access through more water fountains. Environmental concerns also mention chemical runoff as a key issue. Some support water fluoridation and maintaining Council control of water services. Overall, there's a strong emphasis on enhancing water management, preserving wetlands and waterways, and ensuring sustainable practices, with particular focus on stormwater and wastewater systems maintenance.

The most common themes that emerged from community feedback were:

Improve water services

Community feedback highlights several key concerns and priorities regarding water services. Residents are worried about water supply security and quality, particularly considering population growth and the potential impacts of climate change. There are calls to address infrastructure deficiencies, including upgrading ageing wastewater and stormwater systems to prevent issues like flooding and contamination. Improving water management through measures such as wetland restoration, reducing chemical use, and promoting water conservation are also seen as important. Ensuring equitable access to reliable, safe drinking water is a strong theme, with some questioning the ongoing fluoridation of the supply. The funding of improvements to water services, is also a topic of debate, with residents generally favouring an increase in rates over taking on

additional debt to fund the increased costs. Overall, the feedback emphasises the need for the Council to take a proactive, holistic approach to strengthening water services to safeguard community wellbeing and the local environment.

Concern about sewage system vulnerability

The community has significant concerns about the vulnerability of sewage infrastructure, particularly considering population growth, environmental pressures and extreme weather events. Residents are worried about the potential for wastewater contamination, especially of waterways and coastal areas, due to ageing or inadequate sewerage systems. There are calls for the Council to prioritise upgrading and maintaining these essential services to ensure they can cope with increased demand and the impacts of climate change. Improving sewage treatment and disposal is seen as crucial for protecting public health, ecosystems and the overall quality of the local environment. Some feedback also suggests exploring innovative, sustainable solutions such as decentralised systems or nature-based approaches. Overall, the community is seeking proactive, long term planning and investment to strengthen the resilience of wastewater infrastructure.

Other key themes included:



- Improved water management and quality
- Concern about water quality and supply
- Increase the number of water fountains.





Whakamahi/Hauora Whenua Land Use & Quality

Whakamahi/Hauora Whenua | Land Use & Quality related feedback stresses the community's diverse views on coastal management and urban development. Opinions on erosion and flooding risks vary, as do attitudes towards managed retreat. Many emphasise the coastline's importance to Kāpiti identity, calling for its protection. Development concerns include building in high-risk areas, coastal intensification, and urban sprawl. There's a desire to balance character preservation with necessary growth, favouring low-rise and medium-density options. The debate between coastal protection and retreat underscores the need for case-by-case approaches. Overall, the community seeks a balanced strategy addressing flood mitigation, infrastructure needs, and preservation of local character.

The most common themes that emerged from community feedback were:

Balance intensification with character preservation

The community feedback emphasises the need to strike a careful balance between housing intensification and preserving the unique character of towns and villages. While acknowledging the need for more affordable and diverse housing options, particularly near public transport hubs, residents are adamant that development should not come at the expense of the district's distinctive small-town feel, green spaces, and heritage. Concerns are raised about the impacts of high-density, cookie-cutter housing on charming, low-rise and coastal aesthetics. The feedback calls for thoughtful, context-sensitive urban design that enhances

rather than detracts from the community's sense of place. Maintaining the walkable, family-friendly, and environmentally conscious nature of local settlements is seen as critical. The Friends of Te Horo Beach: Participatory Mapping Activity highlighted additional themes, including a desire for minimal built environment and self-reliance, a preference for no further building but improvements in community amenities, and the importance of parks and reserves with a preference for native vegetation to be considered in planning.

Mixed concern about erosion & flooding

The community expresses mixed levels of concern regarding coastal erosion and flooding in Kāpiti. While some residents are highly worried about the threats posed by these natural processes, exacerbated by climate change, others feel the risks have been overstated or are simply part of living in a dynamic coastal environment. Some point to evidence of long-term accretion rather than erosion, questioning the need for drastic interventions. There are calls for a nuanced, case-by-case approach to assessing hazards and responding appropriately, potentially using a combination of protective measures like seawalls, dune restoration, and managed retreat in the most vulnerable areas. Concerns are also raised about the financial and social impacts of relocating homes and infrastructure. Overall, the community seeks a balanced and evidence-based strategy that safeguards public and private assets without compromising the character and accessibility of the coastline.

Other key themes included:



- Concern about building in high-risk areas
- Reduce urban sprawl
- Implement low rise buildings.

Importance of the coastline in defining geography

The community overwhelmingly views the coastline as a defining and invaluable feature of the region's geography and identity. The beaches, dunes, estuaries, and islands are seen as integral to the area's natural beauty, recreational opportunities, and environmental diversity. Residents express a deep personal connection to the coast, with many choosing to live in Kāpiti specifically for its proximity to the ocean. The Friends of Te Horo Beach: Participatory Mapping Activity highlighted several key themes regarding the natural environment in the area, including the beach as a focal point with recreational, cultural, and ecological importance.



3.2 People

Below is a summary of the key findings related to 'People'.



Aiowhaitika mō te tangata Peace & Safety

Aiowhaitika mō te tangata | Peace & Safety related feedback demonstrates the high value placed on the safe and peaceful atmosphere. Residents appreciate the low crime rate, quiet living, and absence of heavy traffic. Safety is a key priority, particularly for children and the elderly, with calls for increased police presence, enhanced community safety measures, and improved animal control. There is support for creating safe pedestrian environments and maintaining safe driving speeds. The community desires effective local governance and the ability to have a say in matters. Some concerns are raised about potential increased crime and the need for better emergency preparedness. Overall, residents cherish the area's natural beauty and sense of space, while seeking to maintain and enhance safety measures.

The most common themes that emerged from community feedback were:

Improve safety

The community feedback highlights a strong desire to enhance safety and security across Kāpiti, especially for vulnerable groups like children, the elderly, and people with disabilities. Residents seek improvements to both physical infrastructure, such as better lighting, speed limits, and pedestrian crossings, as well as increased community engagement, neighbourhood watch programmes, and a more visible police presence. There are calls for safer public spaces, with improved accessibility, lighting, and CCTV coverage to deter antisocial behaviour. Ensuring schools and routes to them are safe for students to walk or cycle is another key priority. Additionally, there are calls to increase

alcohol licensing fees to address alcohol-related social harms. Overall, the feedback emphasises the need for a multi-faceted, community-focused approach to improving safety and security, underpinned by close collaboration between local authorities, law enforcement, and residents. Achieving a safe, connected, and welcoming environment for all is seen as crucial to long-term prosperity and wellbeing.

Enjoy the relaxing & peaceful atmosphere

The community consistently praises the relaxed, peaceful, and laidback atmosphere that defines the towns and villages, particularly in the coastal areas. The sense of community, friendly neighbours, and lack of traffic and congestion all contribute to the overall tranquil vibe that attracts many to the region. Preserving this relaxed, unhurried ambience, with its small-town charm, is seen as vital to local identity and appeal as a place to live, work and visit. Balancing growth and development with retaining the area's peaceful character is a key priority, ensuring Kāpiti remains a sanctuary from the stresses of modern life.

Recognition of natural beauty & views

The community overwhelmingly values the natural assets and breathtaking scenery as defining features of Kāpiti. Residents take great pride in the pristine beaches, lush green spaces, meandering rivers, and panoramic vistas that form the backdrop to daily life. Easy access to these natural wonders, whether for recreation, relaxation or simply admiring the view, is seen as integral to wellbeing and community identity. Safeguarding the area's environmental treasures, from the iconic Kāpiti Island to the coastal dunes and native bush, is a top priority.

Other key themes included:



- The area is safe and secure
- Increase police presence
- Improve animal safety and control.





Te hononga ki ētahi atu Connections

Te hononga ki ētahi atu | Connections with others feedback demonstrates that Kāpiti residents value their thriving, connected community with its small-town character and village atmosphere. They emphasise the importance of inclusive spaces, diverse cultural events, and youth-focused activities. There's strong support for upgrading public amenities, improving accessibility, and developing spaces for community gatherings. Residents appreciate the area's artistic culture, recreational opportunities, and family-oriented environment. The community seeks to balance preserving its relaxed lifestyle with fostering growth, calling for enhanced facilities like libraries, community halls, and sports hubs. There's also a focus on embracing diversity, supporting vulnerable groups, and respecting Māori culture and history.

The most common themes that emerged from community feedback were:

Create & maintain inclusive spaces

The community feedback highlights the need for Kāpiti to have a variety of accessible, affordable, and welcoming public spaces that serve all residents, regardless of age, ability, or background. There are calls for multi-purpose community centres, halls, and meeting rooms that can host a diverse range of activities, from youth programmes and adult education to support groups and community events. Ensuring these spaces are inclusive, safe, and free from stigma is seen as essential. Additionally, enhancing public spaces, such as Beach Road, to become welcoming social hubs is mentioned as a way to restore Māori identity and empower underrepresented groups. Beyond physical infrastructure, the community wants to see more Council-led initiatives that bring people together, foster connections, and promote a

shared sense of belonging. Dedicated effort is needed to engage with marginalised groups and design spaces that meet their unique needs. Overall, the feedback emphasises the fundamental role of inclusive community hubs in enhancing wellbeing, strengthening social cohesion, and providing equal opportunities for all.



Thriving connected community & supportive of others

Community feedback reflects a strong desire for Kāpiti to be a thriving, connected place where people support one another. Residents value the friendly, caring spirit within many neighbourhoods and want to see this sense of community enhanced through more opportunities for social interaction, learning, and shared experiences. Ideas include expanding community events, clubs, and activities that bring together diverse groups, as well as creating accessible, affordable spaces for these to take place. Improving information-sharing about local services, support networks, and volunteering opportunities is also seen as key to fostering a truly supportive community. Overall, the feedback highlights the community's belief that by strengthening connections, promoting inclusivity, and looking out for one another, Kāpiti can become an even more vibrant, resilient place to live.

Activities and facilities to SUPPORT Connecting WITH Others



Development of youth-focused activities & facilities

The community feedback, (including insights from the Kāpiti Needs Assessment: Insights from Kāpiti Young People), expresses a need for more youth-focused activities, facilities, and spaces across Kāpiti. Residents feel there is a lack of affordable, engaging options for children, teenagers, and young adults, particularly during school holidays and on rainy days. Ideas include indoor recreational facilities like sports courts and gaming centres, outdoor facilities such as skateparks, as well as creative hubs, music venues, and youth-led community spaces. Improved access to counselling, health, and career support services for young people is also seen as crucial. Overall, the feedback suggests the community wants to see Kāpiti invest in infrastructure and programming that caters to the social, recreational, and developmental needs of its younger residents, helping them feel valued, connected, and empowered to thrive.

Other key themes included:



- Upgrade public amenities (i.e. parks, library)
- More cultural events, activities and promotion
- Fond of small-town character.



Hanga Whare Housing

Hanga Whare | Housing feedback indicates that Kāpiti faces diverse housing challenges, with residents expressing concerns about affordability, accessibility, and supply. There's debate over housing density, with some supporting high-density options and others preferring low-density developments. Many call for increased housing variety, including social housing, retirement homes, and accessible options for elderly and disabled residents. Concerns were raised about property values, insurance, and the impact of coastal erosion and flooding. The community seeks balanced development that considers climate resilience, green spaces, and transport links. There's a call for streamlined consenting processes, reduced rates, and policies to ensure long-term housing accessibility and affordability across various demographics.

The most common themes that emerged from community feedback were:

Strategies to ensure housing is affordable

The feedback highlights the community's strong desire for Kāpiti to have a diverse range of affordable housing options, catering to different ages, incomes and lifestyles. Suggestions include incentivising the development of smaller, more sustainable homes, as well as enabling secondary dwellings and intergenerational living. There are calls for the Council to take a more active role, such as rezoning land, facilitating public-private partnerships, and providing its own social housing stock, especially for the elderly and those on lower incomes. The community also supports the transfer of Council housing for older people to a new Community Housing Provider, with less management from Council. Ensuring new housing is well-integrated into existing

neighbourhoods, with good access to transport and amenities, is seen as crucial. Overall, the feedback emphasises the need for a multi-faceted, holistic approach to improving housing affordability and diversity, while also preserving the distinctive character of Kāpiti.



Concern regarding high-density housing

The community feedback expresses significant concern about the prospect of high-density housing developments in Kāpiti, fearing they could undermine the region's distinctive character and quality of life. Residents are worried that large-scale, multi-unit buildings and subdivisions, particularly in previously low-density areas, will erode the area's small-town feel, increase traffic congestion, and put pressure on already strained infrastructure and services. There are calls to limit building heights, preserve green spaces, and integrate any new housing sensitively within existing neighbourhoods. The feedback suggests a preference for more moderate, sustainable approaches to growth that enhance rather than diminish natural assets and the community-oriented atmosphere.

Concern about property value & insurance

The community feedback expresses significant concern about the potential impacts of coastal erosion and climate change on property values and insurance costs in Kāpiti. Residents are worried that the Council's climate adaptation strategies, such as managed retreat, could lead to a devaluation of coastal properties and make it increasingly difficult to obtain affordable mortgages and insurance coverage. There is a sense of anxiety that homeowners may become "trapped" in vulnerable areas, unable to sell or protect their assets. The feedback suggests the community feels the Council is not doing enough to safeguard private properties, with calls for a more balanced approach that prioritises protecting existing homes and infrastructure, rather than focusing solely on long-term retreat.

Other key themes included:



- Focus on increasing housing supply
- Reduce costs associated with housing development
- Increase accessibility to housing.





Hauora | Health feedback shows that residents value access to activities and facilities that promote and enable healthy lifestyles. Key concerns include accessibility of healthy food options, the need for alcohol harm reduction, and education to promote healthy living. There is a clear demand for improved healthcare services, particularly for the elderly and those with disabilities, alongside the establishment of local healthcare facilities. Improving access to both hospitals and general practitioners is viewed as vital for the community. The importance of community connection through group activities, sports clubs, and family-friendly entertainment is highlighted, as well as the need for policies that discourage unhealthy habits like junk food consumption and vaping. The feedback identifies the need for improved mental health services, emergency care, and support for disabled individuals.

The most common themes that emerged from community feedback were:

Establish local healthcare facilities

The community feedback highlights a pressing need to improve access to quality healthcare services within the local area. Key themes include calls for a new hospital or medical centre in Kāpiti to reduce the need for long-distance travel, as well as requests for a wider range of specialist services and better-resourced existing facilities. Suggestions also focus on creating

healthcare 'hubs' to enhance coordination, and establishing additional community support programs, particularly for vulnerable groups. Collectively, the feedback reflects a strong desire to ensure equitable, comprehensive, and conveniently located healthcare options that can sustainably support the area's growing population.

Improvements in mental health & wellbeing

The community feedback emphasises the critical role the coastline plays in supporting mental health and overall wellbeing. Key themes include descriptions of the coastline as a place of peace, tranquillity and rejuvenation that helps alleviate stress and nourish the soul through regular activities like beach walks and swimming. There are also perspectives that the coastline is essential for physical, emotional and spiritual wellbeing, deeply connected to community identity and providing an inclusive, low-cost space for wellness activities and family time. Collectively, the feedback reflects a deep, multifaceted appreciation for the coastline's position as a cornerstone of community health, with desires to ensure it remains accessible and in a pristine, supportive condition.

Other key themes included:



- Exercise and fitness classes
- Improve access to GP services
- Concern regarding lack of hospital services.

Improve access to hospital services

The community feedback strongly emphasises the need to improve access to hospital and emergency medical services within Kāpiti. Key themes include calls for the establishment of a new local hospital or centralised 'health hub' to reduce travel times and costs and connect all residents - including in Ōtaki - to quality, integrated healthcare infrastructure. There are also desires to see upgrades and expansions to existing medical centres, integrating a wider range of services, and enhancing the overall quality, variety and after-hours availability of care options. Collectively, the feedback reflects a strong community commitment to ensuring equitable, accessible and high-quality healthcare that can effectively support the District's growing and aging population.





Kai Food

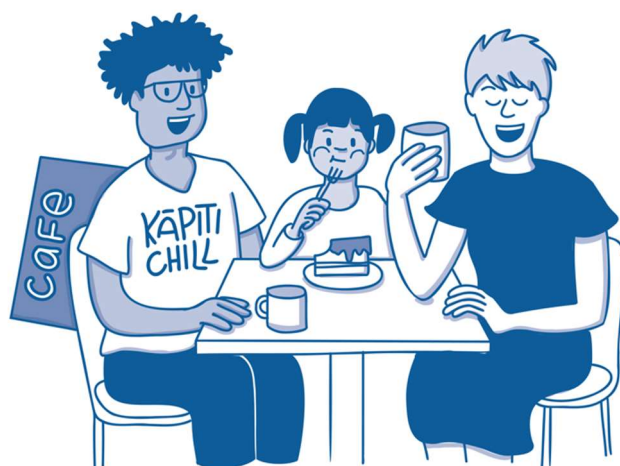
The feedback on Kai | Food shows that Kāpiti residents value their diverse culinary scene, enjoying local cafés and restaurants. There is strong support for community gardens, urban food production, and locally grown produce to enhance food security and sustainability. Residents advocate for food-related programmes, community initiatives like food banks and soup kitchens, and events such as food fairs and festivals. Concerns are raised about access to healthy food, supermarket competition, and the preservation of arable land. The community seeks to simplify processes for food stalls and support local growers and marketers. Overall, there's a desire to foster a resilient, locally-focused food system that caters to diverse needs and promotes community engagement.

The most common themes that emerged from community feedback were:

Enjoy the variety of cafés & restaurants

The community consistently praises the wide array of cafés and eateries available across Kāpiti, which are seen as integral to the region's character and appeal. Residents enjoy the laidback, "beachy" atmosphere fostered by the many casual cafés and restaurants, often located within easy walking distance of the coast. The variety of culinary offerings, from casual beach-side fish and chips to more upscale dining, is also highlighted as a major draw for both locals and visitors alike. Maintaining this vibrant café culture, while ensuring new development is sensitively integrated, is viewed as crucial to

preserving the distinctive small-town charm. The community feedback suggests the cafés and restaurants play a key role in creating a welcoming, social environment that complements the area's natural assets.



Encourage investment in local shopping & dining

The community feedback advocates for greater investment and support to enhance local shopping and dining offerings. Residents want to see measures that attract new, independent businesses and revitalise existing commercial areas like Mahara Place. Ideas include streamlining consent processes, providing incentives for sustainable development, and promoting local producers and artisans. Improving the vibrancy and diversity of retail and hospitality options, particularly in town centres, is seen as crucial to making Kāpiti more appealing for both residents and visitors. The community envisions lively, pedestrian-friendly hubs with a mix of specialty shops, vibrant cafés and eateries that showcase the region's unique character. Overall, the feedback emphasises the role of a thriving local economy in bolstering local appeal and community spirit.

Other key themes included:



- Access to locally grown food
- Support garden production in community and urban areas
- Concern regarding development on arable land.

Community food projects, such as food banks & soup kitchens

The community feedback highlights the need for more accessible, community-oriented food initiatives in Kāpiti, such as food banks, soup kitchens, and community gardens. Residents recognise the importance of providing free or low-cost food options for those experiencing hardship, especially in the face of the rising cost of living. The feedback suggests these projects could serve as inclusive hubs, fostering a sense of community while also addressing food insecurity. Establishing permanent, well-equipped spaces for food-related activities and mutual aid is viewed as preferable to the current more informal, scattergun approaches. Overall, the community seeks to leverage food as a means of bringing people together, supporting vulnerable groups, and building a stronger, more connected Kāpiti.





Mātauranga Education & Training

Mātauranga | Education & Training related feedback indicates a focus on improving access and equity in education, with efforts to ensure all have access to schools. There are also calls to address bullying/violence, and provide alternative options. Residents wish to see the curriculum expanded to strengthen civics, cultural, environmental and career education, alongside language and history. System-wide improvements are underway, including new facilities, staff training, and reducing student costs. The aim is to create an inclusive, engaging education system to serve diverse needs.

The most common themes that emerged from community feedback were:

Community education classes

Community feedback highlights a strong desire for a range of adult education and community learning opportunities to be offered. Residents suggest classes and workshops covering topics such as arts, crafts, languages, gardening, cooking, budgeting, technology, and personal development. Many see the Community Centre as an ideal location to host these types of educational and

skill-building programs, making them accessible and affordable for locals. The comments emphasise that these classes and activities would not only provide valuable learning experiences, but also help bring the community together, foster connections, and combat isolation. Overall, there is a clear call for resources to be allocated towards adult and community education initiatives.



More educational courses & facilities

Community feedback highlights strong support for expanded educational opportunities and facilities in Kāpiti. The community emphasise the need for improved access to tertiary education in Kāpiti, potentially through a satellite university or polytechnic campus. This is seen as key to retaining young people, providing local study options, and ensuring businesses have a skilled workforce. Overall, education is viewed as critical for future development and resilience.

New schools & education facilities

The Kāpiti community express a clear desire for new and expanded educational facilities and schools, particularly in Waikanae. There are calls for a new primary school to serve the Waikanae Beach area, as well as the establishment of a local secondary school or college in Waikanae to cater for the growing population. Residents suggest the existing primary schools have sufficient roll numbers to justify a dedicated Waikanae college, to reduce the need for students to travel outside the area. Beyond just new schools, the comments highlight the need for more diverse educational options, such as Māori medium, Steiner, and vocational programmes. Improved access to quality education at all levels is seen as crucial for supporting future growth and development.



Opportunities for all LOCALLY



Other key themes included:



- Adult education programs
- Encourage youth programs and initiatives
- Language and Te Reo Māori classes.



Ohunga Income & Work

Ohunga | Income & Work related feedback highlights a desire for balanced economic development. Key priorities include attracting new businesses, creating higher-value jobs and educational opportunities, while also supporting existing local shops, restaurants, and tourism operators. There are concerns about the impacts of vacant properties, rising costs, and overdevelopment, with a focus on maintaining the area's character and appeal. The community seeks to enhance tourism offerings, improve promotion and branding, provide more flexible workspaces, and ensure the benefits of growth are felt broadly. Underlying these themes is a call for a sustainable approach that supports the local economy and livelihoods, while preserving Kāpiti Coast's unique identity and liveability.

The most common themes that emerged from community feedback were:

Encourage investment in local shopping & dining

Kāpiti residents express a strong desire for more diverse and thriving local shops and eateries in community centres. They wish to see the empty shops filled with unique, independent businesses such as boutiques, bookshops, art galleries, and speciality food stores like bakeries, greengrocers, and delis. Residents

also crave more dining options, particularly family-friendly cafés, restaurants offering various cuisines.



Enjoy visiting local shops

Kāpiti residents greatly appreciate and enjoy visiting the local shops in the various village centres. They value the friendly, personable service provided by the shopkeepers and the sense of community that comes from running into neighbours and acquaintances while out shopping. The boutique feel of the independent shops is cherished, as is the convenience of having essential amenities within walking distance. Residents specifically mention frequently visiting the dairy, cafés, pharmacy, and other services like the bike shop, dentist and vet. Supporting these small local businesses is important to the community.

Other key themes included:



- Maintain affordable rates
- Support for local businesses and groups
- Promote employment and jobs.

Address vacant properties & improve town appeal

Kāpiti residents express strong concerns about the number of vacant shops and buildings in the village centre, which detract from the town's appeal and vibrancy. They want to see these empty properties occupied by thriving businesses to revitalise the area. Suggestions include reducing rents to attract tenants, implementing bylaws to prohibit long-term vacancies, and even having the Council purchase and repurpose key sites like the old post office. Residents also call for general improvements to the appearance of the village, such as refurbishing tired-looking shopfronts, adding more colour and art, and creating inviting outdoor dining spaces.



Ngā Hono Networks & Connectivity

Ngā Hono | Networks & Connectivity related concerns around ensuring accessibility and reliable public transportation options, with a focus on improving cycling and walking infrastructure, increasing EV charging points, and enhancing public transit services. There are also worries about the impact of flooding and erosion on roads, bridges, and coastal access points. The community seeks proactive infrastructure maintenance, traffic calming measures, and better connectivity between different modes of transport and amenities. Specific requests include extending cycleways, improving parking, investing in a tramline to Mackay's, and addressing accessibility issues in areas like Ames Street and The Parade. Overall, the feedback highlights the importance of inclusive, well-connected, and resilient transportation and infrastructure for the community.

The most common themes that emerged from community feedback were:

Te Newhanga Kāpiti Community Centre provides a needed community space

There's strong support for a central community space offering diverse facilities. Residents emphasise the need for affordable, accessible meeting rooms of various sizes, equipped with modern technology. Many call for a multi-purpose venue that can host classes, workshops, community events, and provide space for local organisations. There's

particular emphasis on facilities for youth activities, elderly support, and spaces for arts and crafts. A community kitchen, drop-in centre, and information hub are frequently mentioned. Overall, there's a clear desire for a centralised, welcoming space that fosters community connections and supports local initiatives.



Te Newhanga Kāpiti Community Centre provides a central hub with easy access

Many residents emphasise the importance of a centrally-located community hub that's easily accessible to all. The current location near Coastlands, the Library, and public transport is seen as ideal. Ample parking is frequently mentioned as crucial. The centre is envisioned as a one-stop-shop for community services, information, and activities. Its central position is viewed as key to fostering community connections and providing a visible, recognisable focal point for local events and services. Accessibility for elderly and disabled users is highlighted as essential.

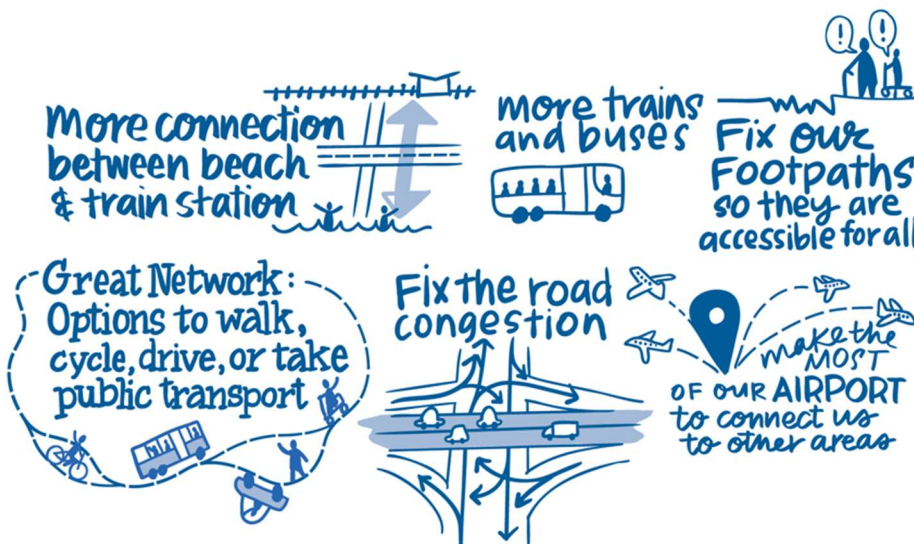
Accessible & reliable public transport

Kāpiti residents appreciate the District's excellent public transport links, particularly the convenient rail connection to Wellington, which enables commuting and access to the city. Buses and cycle paths further contribute to accessibility. The transport options, combined with the proximity to the beach, river, and natural surroundings, allow residents to enjoy the area's amenities without relying on cars.

Other key themes included:



- Te Newhanga Kāpiti Community Centre offers affordable venue options
- Proximity and access to amenities and services
- Support for improved access to beach and ocean.





Hihiri | Energy feedback indicates a strong focus on renewable energy adoption, particularly solar photovoltaic (PV) for Council infrastructure, with concerns about the impact on gasoline and power supply as well as increasing energy costs. The community is also interested in promoting hybrid and electric vehicles, increasing access to EV chargers, and supporting renewable energy initiatives like requiring solar panels on new builds. However, there is opposition to wind turbines, and a desire to reduce the price of petrol while increasing competition among energy suppliers.

The most common themes that emerged from community feedback were:

Focus on renewable energy

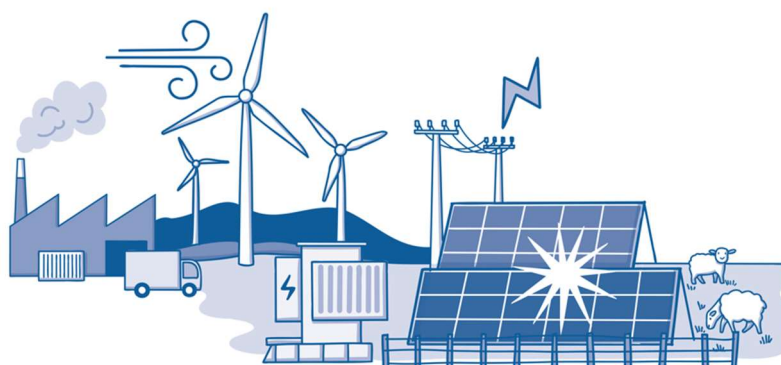
There's significant interest in renewable energy projects, particularly solar power. Residents suggest installing solar panels on individual homes and public buildings, as well as creating community solar farms. Some propose a shared electricity generation system with community batteries to store excess power. There's also mention of wind power, with a specific suggestion for a windmill on Paekākāriki Hill. Overall, there's a desire for energy-efficient homes and infrastructure, with calls for the Council to support and incentivise sustainable energy solutions for the community.

Increase solar energy support

There's a clear call for the Council to actively promote and support solar energy adoption. Residents want encouragement and assistance for homeowners to install solar panels, potentially through incentives or access to resources. There are suggestions to make solar installations a standard feature in new building projects, both private and municipal. The concept of community power cooperatives utilising public and commercial roof spaces for solar generation is proposed. Additionally, there's interest in developing micro-grids for local solar power distribution.

Other key themes included:

- Adopting solar PV for KCDC infrastructure
- Concern about the impact on power supply
- Concern regarding increasing energy costs.





Ora Rite | Equality feedback. highlights concerns over the distribution of protection costs, risks to vulnerable groups, and debates on protecting private vs public assets. There is a desire for an equitable, inclusive approach that supports accessibility for all genders, races, religions, and the elderly/disabled. The focus is on preserving assets for future generations through a targeted, supportive funding model that ensures inclusivity and accessibility for the diverse community.

The most common themes that emerged from community feedback were:

Inclusivity & accessibility for the elderly & disabled

The community feedback highlights the importance of ensuring that community facility in Kāpiti are inclusive and accessible for all, with a particular emphasis on the needs of elderly and disabled residents. Respondents express a desire for community centres to provide dedicated spaces, activities and support services tailored towards older people, such as social gatherings, exercise classes, and drop-in services to combat loneliness. There are also

calls for full accessibility, including wheelchair-friendly layouts, sensory rooms, and provision for mobility aids. Beyond the physical design, commenters stress the need to foster a genuinely welcoming and inclusive environment for diverse groups, to enable all community members to feel comfortable accessing community facilities and programmes.



Concern about distribution of protection costs

The Kāpiti community express significant concern over who should bear the financial burden of coastal protection measures in Kāpiti. Many argue that homeowners in vulnerable coastal areas should fund any necessary defences, rather than the wider community through rates. There is a view the risk was foreseeable, and new owners have made a choice to live in high-risk areas. Suggestions include targeted rates for affected homeowners, or public funding being contingent on managed retreat plans. Overall, there is strong opposition to general ratepayers covering the costs of protecting private coastal properties, with calls for more equitable funding models that place responsibility on the benefiting landowners.

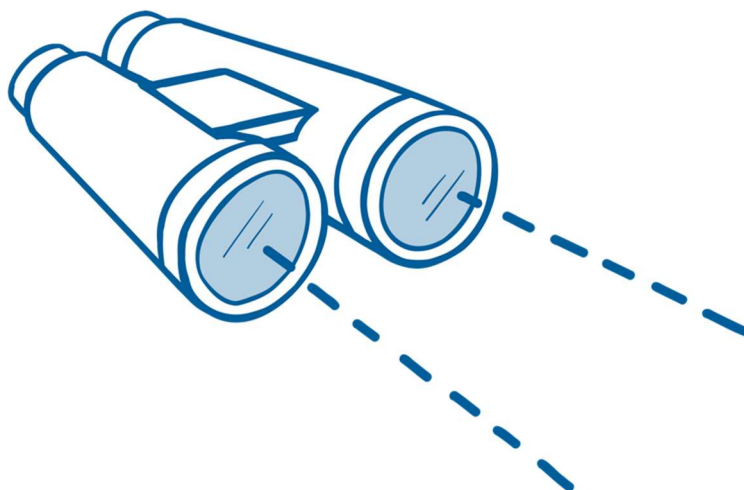
Inclusive of diversity

The Kāpiti community emphasise the importance of fostering an inclusive and diverse community. Respondents express a desire for the area to be open-minded, tolerant and supportive of people from all backgrounds, ages and abilities. There is a call for the community to actively work towards acceptance and integration, providing facilities and activities that cater to the needs of the diverse local population. Maintaining the friendly, unpretentious village atmosphere and sense of community spirit is seen as crucial, ensuring Kāpiti is a place where everyone feels welcome, valued and able to participate. Overall, the feedback highlights the need for Kāpiti to embrace its diverse population and promote an inclusive vision for the future.

Other key themes included:



- Preservation for future generations
- Supports accessibility for all race/religion
- Supports accessibility for all genders.



3.3 Partnership

Below is a summary of the key findings related to 'Partnership'.



He Waka eke noa/A Shared Waka Community Partnership

The feedback on He Waka eke noa/A Shared Waka | Community Partnership highlights several concerns and priorities regarding access to information, support services, and community engagement on the Kāpiti Coast. There are calls for the Council to improve affordability, transparency, and communication, while addressing issues around Council spending, debt, and coastal adaptation planning. The community emphasises the need for a more inclusive, science-based, and holistic approach that incorporates local knowledge and supports vulnerable members. They desire stronger community-led initiatives, decision-making, and capacity-building, as well as more accessible community spaces, information, and volunteer opportunities. Overall, the community is seeking a more effective, accountable, and collaborative partnership with the Council to address their needs and priorities.

The most common themes that emerged from community feedback were:

Support for community organisations & events

There's strong support for diverse community initiatives and events, including markets, fairs, street parties, and cultural celebrations. Residents value organisations that foster neighbourhood connections, support vulnerable groups, and promote environmental awareness. Residents are interested in Council backing

volunteer activities, community gardens, and local charities. Suggestions include a community connector role, better advertising of existing groups, and reducing barriers for community organisations. Overall, there's a desire for a connected, supportive, and vibrant community spirit.



Concern about inadequate Council planning & action

Many residents express frustration with perceived lack of Council action and planning regarding coastal hazards. Concerns include insufficient maintenance of waterways, inadequate stormwater management, and slow response to erosion issues. Some criticise the Council for approving developments in vulnerable areas and then failing to protect them. There's scepticism about the consultation process, with claims it lacks transparency and genuine community input. Residents want clearer, more proactive strategies for addressing coastal risks, better coordination between agencies, and faster implementation of protective measures like seawalls where needed.

Maintain affordable rates

Many residents express strong concern about rising rates, with frequent calls to reduce or freeze rates. There's widespread criticism of perceived Council overspending on non-essential projects and consultations. Ratepayers want the Council to focus on core services and infrastructure maintenance rather than 'vanity projects'. Some suggest selling assets or cutting staff to reduce costs. There are fears that continued rate increases will force long term residents, especially pensioners, out of the area. Furthermore, residents favour low average annual rates increases, due to affordability, while believing this is sufficient to allow reasonable debt reduction. Concern is also raised that rates increase may be greater than the level of inflation.

Other key themes included:



- Strengthen community input and decision making
- Support for more inclusive and transparent engagement
- Concern about governance by CAP



3.4 Comparison of District Vision engagement results and Vision follow up results

This section presents the key similarities and differences between the District Vision Survey and the Vision follow up survey.

3.4.1 Key Similarities

Community spaces — Both surveys emphasise the importance of community spaces and facilities. Additionally, they highlight the importance of community spirit and inclusivity.

Youth focus — Both surveys mention the need for youth-focused activities and facilities. This was a key theme in the follow-up survey and equally present in the initial survey.

Infrastructure concerns — Both surveys touch on infrastructure issues and indicate a desire for enhanced public amenities, improved transportation options, and better infrastructure.

Economic development — Both surveys show support for local businesses and encouraging investment in local shopping and dining options.

3.4.2 Key Differences

Environmental focus — The initial survey had a strong emphasis on climate change adaptation strategies, biodiversity, and environmental protection. This was less prominent in the follow-up survey.

Economic aspects — The initial survey included more discussion on supporting local businesses and economic development. This was less evident in the follow-up survey.

Healthcare — While both mention healthcare concerns, feedback from the follow up survey placed more emphasis on improving healthcare access and facilities.

Specific facilities — The follow-up survey introduced more specific requests for facilities like indoor sports centres, cultural spaces, and dog parks, which were not as detailed in the initial survey.

Housing issues — Both surveys address housing concerns, however areas including affordability and balancing development with character preservation are more prominent in the initial survey.

Council actions — The follow-up survey placed more emphasis on concerns about Council spending and rates increases and the desire for transparency and accountability in Council decisions. This was less prominent in the initial survey.

3.4.3 Implications for District Vision Refinement

Maintain core themes — Retain and strengthen language around community spaces, inclusivity, youth engagement, infrastructure development, and economic growth.

Articulate community spaces — Emphasise creating inclusive, accessible spaces that foster social connections and cater to diverse community needs.

Strengthen youth focus — Include clear commitments to youth development, outlining plans for dedicated spaces, programmes, and initiatives.

Address infrastructure comprehensively — Outline a balanced approach to infrastructure improvement, covering both maintenance and new development, whilst also demonstrating adaptability to changing needs and priorities.

Emphasise sustainable transportation — Highlight the importance of accessible, sustainable transportation options connecting the community.

Emphasise economic growth — Articulate strategies for supporting local businesses, attracting investment, and creating a diverse economic base.

Maintain environmental commitment — Keep strong language around environmental stewardship and climate change adaptation, framing these in terms of community resilience.

Prioritise health services — Address growing healthcare concerns by outlining plans for improving local facilities and attracting healthcare professionals.

Include specific local priorities — Where appropriate, reference specific community-driven projects or concerns to demonstrate responsiveness to evolving local priorities.

Refine housing and development goals — Articulate a balanced approach to housing that addresses affordability, sustainability, and preservation of community character.

Address fiscal responsibility — Include commitments to transparent decision-making, fiscal responsibility, and regular community engagement on budgetary matters.

Increase specificity — Where appropriate, refine broader vision statements to reflect more specific community needs and desires identified in the follow-up survey.

3.5 Comparison of District Vision engagement results and Vision follow up results across the different local areas

This section of the report presents a summary of the key similarities and differences of the results for each of the local communities.

3.5.1 Key Similarities Across All Communities

Natural environment — All communities, including Ōtaki, highly value their natural surroundings, including beaches, rivers, parks, and green spaces. There's a strong emphasis on protecting and enhancing these assets.

Community spirit — Residents across all areas appreciate the friendly, close-knit community atmosphere and village-like character of their respective areas. Ōtaki particularly emphasises its strong Māori culture and heritage.

Infrastructure concerns — All communities express a need for improved infrastructure, particularly walkways, cycleways and bridleways, road safety, and public transport. Ōtaki strongly emphasises the need for better public transport connections to Wellington and Palmerston North.

Local businesses — Support for local businesses and a desire for diverse shopping and dining options are common to all areas. Ōtaki specifically mentions the need to address vacant properties and improve town appeal.

Climate and coastal concerns — All communities show awareness of climate change impacts and coastal hazards, though with varying degrees of concern and scepticism. Ōtaki emphasises food resilience and sovereignty in this context.

3.5.2 Key Differences

Development Approach

- Ōtaki: Focuses on balancing growth with maintaining small-town character and Māori heritage.
- Waikanae: Emphasises balancing development with character preservation.
- Raumati: Stronger focus on maintaining the existing character and resisting significant changes.
- Paraparaumu: Seeks to revitalise the town's appeal while preserving its character.
- Paekākāriki: Strong emphasis on preserving village character and resisting over-development.

Healthcare

- Ōtaki, Waikanae and Paraparaumu: Stronger calls for improved healthcare facilities, including local hospital or emergency services.

- Raumati & Paekākāriki: Less emphasis on healthcare improvements in the main findings.

Education

- Ōtaki: Strong emphasis on diverse educational opportunities, including Māori education and courses leading to local job opportunities.
- Waikanae and Paraparaumu: More mentions of the need for new schools and educational facilities.
- Raumati and Paekākāriki: Less focus on educational infrastructure in the key findings.

Coastal management

- Ōtaki: Focus on protecting beaches and rivers, with emphasis on tsunami preparedness.
- Waikanae and Raumati: More divided opinions on coastal management strategies.
- Paraparaumu: Focus on balancing coastal protection with development.
- Paekākāriki: Strong emphasis on protecting the coastline and scepticism towards managed retreat strategies.

Community spaces

- Ōtaki: Strong focus on youth-focused activities and facilities, and spaces that celebrate Māori culture.
- Waikanae: Calls for new community facilities like a hall and library upgrades.
- Raumati: More focus on enhancing existing spaces and creating inclusive areas for various age groups.
- Paraparaumu: Emphasis on revitalising existing spaces and creating new community hubs.
- Paekākāriki: Strong focus on maintaining existing community spaces and their historical significance.

Economic development

- Ōtaki: Emphasis on supporting local and Māori businesses, addressing vacant properties, and promoting employment opportunities.
- Waikanae and Paraparaumu: Stronger emphasis on attracting new businesses and addressing vacant properties.
- Raumati: More focus on supporting existing local businesses and maintaining the current character.
- Paekākāriki: Emphasis on small-scale, local economic development that preserves village character.

Housing

- Ōtaki: Focus on affordable housing and diverse housing types to cater to different demographics.
- Waikanae and Paraparaumu: More open to managed growth and diverse housing options.
- Raumati: Concerns about high-density housing impacting community character.
- Paekākāriki: Strong focus on affordable housing and maintaining community diversity.

Cultural emphasis

- Ōtaki: Stands out with its strong focus on Māori culture, heritage, and Te Reo Māori promotion.
- Other communities: Less emphasis on specific cultural aspects in their key findings.

4 Data analysis methodology

4.1 Survey data analysis

PublicVoice used a step-by-step method called thematic analysis to review the open-ended responses from the Vision Kāpiti engagement feedback. This method follows five main steps:

1. Understanding the data: Analysts read the survey data multiple times to grasp its content.
2. Initial coding: The survey data was sorted into labelled segments highlighting key points.
3. Identifying themes: These segments were then grouped into broader themes specific to the survey questions.
4. Refining themes: Themes were checked for relevance and clarity.
5. Finalising themes: Each theme was carefully defined to represent the feedback accurately.

4.2 Key findings analysis

To generate the key findings, PublicVoice analysed all the feedback from the Vision Kāpiti engagement along with the Vision Raumati, Vision Paraparaumu, Vision Waikanae, Vision Ōtaki, and Vision Paekākāriki engagements. The analysis of the combined data was structured using the framework of the Council's Doughnut Economic Framework, which provides a holistic view of the community's well-being by considering social, cultural, environmental, and economic factors.

The key findings were organised into themes that align with the various dimensions of the Doughnut Framework. This approach allowed for a comprehensive understanding of the community's values, priorities, and concerns, extending beyond the specific questions asked in the survey.

4.3 Reporting

For the feedback data, tables illustrating the frequency of the key themes have been included to demonstrate the significance of each theme. Only descriptions of the most frequent themes have been included in Section 3, "Key Findings" to highlight the main points expressed by respondents.

Sections 5 to 27 are summaries of all the data received related to each question.

Phase One: Gathering initial views: District Vision Engagement Project

5 Councillors' Top 10 strategic priorities

5.1 Have we got them right?

Respondents were asked whether Councillors' have got the Top 10 strategic priorities right. Table 1 details respondent feedback in relation to these priorities.

Overview of responses

Connected communities — Respondents mention the need for a weatherproof area for skating, more activities for couples without children, and indoor facilities for families and children on rainy days. They also highlight the importance of improving accessibility to amenities such as pools and healthcare services. Improvements in traffic management, sustainable transport, and walkability are also emphasised.

Climate & change — Respondents emphasise the importance of nature-based solutions and risk screening processes to address climate change impacts, rather than solely relying on infrastructure solutions. They advocate for prioritising adaptation efforts alongside mitigation, focusing on reducing emissions, and protecting the environment for the long-term viability of the community.

Engaging & delivering — Respondents highlight the importance of accountability and transparency and better communication with the local community. There is also a call for adopting a Tiriti-partnership lens, and the connection of people and place to be considered in all council decision-making. Realistic communication, inclusion of Māori views, and addressing the balance of power between Council staff and councillors are additional concerns.

Theme	Subtheme	Frequency
CONNECTED COMMUNITIES		40
	Improve transport connections	11
	Increase youth programs and facilities	9
	Improve facilities	8
	Improve recreational opportunities	8
	Extend and maintain footpaths	4
GENERAL COMMENTS		30
	Consultation document is difficult to comprehend	10
	General support for priorities	7

Theme	Subtheme	Frequency
	Improve roads	6
	Concern regarding Council costs	4
	Focus on core Council functions	3
CLIMATE & CHANGE		27
	Focus on climate change	15
	Consider all hazards	5
	Improve waste reduction and recycling	4
	Improve train service	3
ENGAGING & DELIVERING		14
	Improve communication and reporting	9
	Improve Māori representation	5
INVOLVED COMMUNITIES		5
	Improve youth representation	5
HOUSING ACCESS		4
	Improve access for those with health issues	2
	Improve access to affordable housing	2
THRIVING ECONOMY		4
	Improve promotion of region	4
HEALTH ACCESS		3
	Improve support for disabled	2
	Policies to attract/retain medical professionals	1
ENVIRONMENT & LAND USE		3
	Balancing development and environment	3
RESILLIENT WATERS		2
	Ensure fish can migrate	1
	Maintain stormwater and wastewater systems	1
NEW PRIORITIES		1
	Support arts and culture	1

Table 1: Have we got them right?

Selected Responses

"Ensure long term viability of Kāpiti by zoning every possible flood area as non-housing (e.g. zone as wetlands, walk areas, cycling Etc) - Zone any and all possible flood areas as non-housing."

Have we got them right?

"Need to focus on climate action - it's a pressing issue, science is already there to prove it."

Have we got them right?

"On improving healthcare services - one under resourced after hours clinic doesn't seem adequate for the population here - Always massive wait times at the after-hours clinic and exorbitant cost for barely 5 rushed minutes with a doctor. Anything significant requires going all the way into Wellington hospital."

Have we got them right?

"We must focus on economic opportunity and creating reasons for you people to stay in Kāpiti!"

Have we got them right?

5.2 What actions can we take?

Respondents were asked what actions Council can take. Table 2 is a summary of actions the Council should take.

Overview of responses

Connected communities — Respondents express the importance of taking a holistic approach to improving facilities such as parks, emphasising the need for nature and restoration of dunes to enhance the park experience. They also suggest that park spaces should serve multiple groups in the community and offer a range of activities to appeal to a larger audience. There is also a call for more welcoming ethnic diversity, and collaboration with government and community groups to address key challenges and provide integrated solutions. Strengthening partnerships with iwi and promoting unity with diversity are also highlighted.

Climate & change — Respondents are concerned with the need for long lasting seawalls and coastal adaptation strategies. They want the stormwater network to be enhanced and its capacity increased. The Council's managed retreat plan is questioned, specifically regarding the lack of information from the Council.

Engaging & delivering— Respondents expressed the need for less talk and more action, as well as increased accountability and evidence-based decision-making. They also highlighted the importance of, being more accessible to the public, and creating masterplans for key areas. Additionally, concerns were raised about the lack of consultation, and the need for clear decision-making processes. Finally, respondents emphasised the importance of in-person engagement and clarity on funding sources for coastal protection work.

Theme	Subtheme	Frequency
CONNECTED COMMUNITIES		22
	Improve facilities	8
	Increase youth programs and facilities	6
	Partnership with organisations	5
	Improve Māori representation	3
CLIMATE & CHANGE		11
	Focus on climate change	7
	Consider all hazards	4
ENGAGING AND DELIVERING		10
	Improve communication and reporting	10
GENERAL COMMENTS		9
	Beautify Kāpiti Coast	3
	Concern regarding Council costs	3

Theme	Subtheme	Frequency
BIODIVERSITY	Night lights (at courts, village, skate park)	3
		5
HEALTH ACCESS	Protect beaches/waterways and green Kāpiti	5
		4
THRIVING ECONOMY	Improve support for disabled	4
		4
HOUSING ACCESS	Improve promotion of region	4
		3
NEW PRIORITIES	Increase access to affordable housing	3
	Support arts and culture	3

Table 2: What actions can we take?

6 Haumarū | Safety

6.1 What are your safety concerns?

Respondents were asked if they had any safety concerns within Kāpiti. Table 3 details respondents' safety concerns.

Overview of responses

Networks & connectivity — Respondents are concerned about the dangers posed by red-light runners and speeding on Kāpiti Road, suggesting the installation of cameras as a solution. They also emphasise the need for bike lanes on Te Moana Road to promote safer biking for children going to school and to increase overall biking in the area. Additionally, there are requests for better roads, footpaths, street lighting, and accessibility features like wheelchair access in public places to improve road safety.

Peace & safety — Respondents mentioned the importance of having more police presence at the train station and better policing of high-speed driving. They also mentioned having concerns about kids feeling unsafe at college, suggesting the need for police visibility in the community. Concerns were also raised about privacy and surveillance in 15-minute neighbourhoods, and the need for more street lighting.

Theme	Subtheme	Frequency
NETWORKS & CONNECTIVITY		31
	Quality of roads/footpaths/street lighting	11
	Traffic/dangerous driving	11

Theme	Subtheme	Frequency
	Extend and maintain cycleways	6
	Improve accessibility/usage	3
PEACE & SAFETY		8
	Increase police presence	4
	Safety of children/elderly	4
HOUSING		2
	Accessibility to emergency housing	2
INCOME & WORK		2
	Attitude towards lower income	1
	Employment/jobs	1
CONNECTIONS WITH OTHERS		1
	Development of youth-focused activities/facilities	1
HEALTH		1
	Mask wearing (covid)	1
CLIMATE & CHANGE		1
	Climate change/weather hazards	1

Table 3: What are your safety concerns?

Selected Responses

"Not many lights when walking from train station to mall or side streets.
Youth- Car racing- Hanging around."

What are your safety concerns?

6.2 How could safety in the district be improved?

Respondents were asked how safety within Kāpiti could be improved. Table 4 details how the Council could improve safety within the district.

Overview of responses

Connections with others — Respondents mentioned the need for more youth programs, lighting, and engagement with young people. They also highlighted the importance of having activities to keep young people busy and addressing the issues faced by students who don't fit in at schools. Additionally, they emphasised the need to make marae available for community emergency response. Some respondents

also suggested having more cameras, along with the importance of having safe places for young people to go.

Networks & connectivity — Respondents advocated for buses to meet the trains in the evenings, lower speed limits, and making Maclean Park pedestrian-only with clearer signage. Additionally, there were concerns raised about the poor lighting in the Civic Centre, the need for traffic light timing adjustments on Kāpiti Road and replacing pavers around the Amphitheatre and trees on the Marine parade footpath for safety reasons.

Theme	Subtheme	Frequency
CONNECTIONS WITH OTHERS		8
	Increase youth programs and facilities	5
	Improve accessibility/usage of public spaces	3
NETWORKS & CONNECTIVITY		6
	Extend and maintain footpaths	3
	Improve lighting	3
PEACE & SAFETY		4
	Installation of cameras	4
CLIMATE & CHANGE		2
	Climate change/weather hazards	1
	Signage for Tsunami safe zones needed	1
HOUSING		1
	Develop more social housing	1
LAND USE & QUALITY		1
	Implement flood mitigating infrastructure	1

Table 4: How could safety in the district be improved?

Selected Responses

"More for young people to engage in. Places to go where it's safe."

How could safety in the district be improved?

"Beach access for people with disabilities otherwise we get stuck."

How could safety in the district be improved?

7 Kainga | Housing

7.1 Your concerns about housing in Kāpiti?

Respondents were asked what worries them about housing in Kāpiti. Table 5 describes respondent concerns regarding housing.

Overview of responses

Policy & planning — Respondents express concerns about utilising arable land for housing and emphasise the importance of protecting valuable farmland. There is a need for more accessible and affordable housing options, particularly for vulnerable populations such as those with disabilities and older individuals. Many respondents highlight the lack of housing availability, rising costs, and inadequate social housing as significant issues.

Affordability — Respondents expressed concerns about the affordability of housing, with mentions of increasing rates making homeownership and renting more unaffordable, the high cost of housing, and the lack of affordable options for various demographics, including young families, the elderly, and those who cannot or do not want to own a home.

Housing diversity & design — Respondents expressed concerns about downsizing, with respondents noting that high-density housing should be well-designed and include open spaces. They also emphasised the importance of incorporating eco-friendly and sustainable features in new housing, such as solar panels and green spaces. Additionally, there were complaints about the lack of consideration for accessibility and overcrowding in housing designs.

Theme	Subtheme	Frequency
POLICY & PLANNING		42
	Concern regarding low housing standards	12
	Not enough housing	10
	Concern regarding lack of focus on climate change	5
	Not enough social housing	5
	Concern regarding development on arable land	4
	Concern regarding laws around zoning and land use	3
	Need for development of housing policies	3
AFFORDABILITY		35
	Concern housing is not affordable	28
	Concern regarding high rates costs	7
HOUSING DIVERSITY & DESIGN		31

Theme	Subtheme	Frequency
	Lack of development around transport/amenities	7
	Not enough variety of housing types/sizes	7
	Not enough access to green space	6
	Concern regarding high density housing	4
	Concern regarding lack of medium density housing	4
	Concern regarding lack of sustainable housing	3
ACCESSIBILITY		20
	Not enough accessible housing for elderly	7
	Concern regarding focus around cars	6
	Not enough accessible housing	4
	Concern regarding lack of cycling infrastructure	3
COMMUNITY		6
	Concern regarding increase in population	3
	Concern regarding lack of community living	3

Table 5: Your concerns about housing in Kāpiti?

7.2 What should we focus on?

Respondents were asked what to focus on to ensure appropriate housing. Table 6 details what respondents would like Council to focus on.

Overview of responses

Policy & planning — Respondents emphasise the need for policies that allow for affordable housing and facilitate coordination between housing providers and those in need. They suggest changing zoning areas to residential, opening up land and providing infrastructure, and rezoning greenfield land. Additionally, there is a call for warmer, safer, and affordable housing options, as well as measures to protect land and housing from market forces.

Housing diversity & design — Respondents express the need for a variety of housing options, including medium density housing, tiny houses, and intergenerational living arrangements. They emphasise the importance of housing that encourages less reliance on cars and is accessible and suitable for different needs and age groups. There is a desire for higher density housing near public transportation and a call for sustainable and affordable housing options.

Affordability — Respondents emphasise the need for affordable housing options in Ōtaki, including tiny houses for cheap student rentals and intergenerational living to share costs. They also call for more community housing for those who cannot afford to buy, as well as affordable housing options for older people. In addition,

respondents mention the importance of affordable house insurance and the need to lower compliance and subdividing costs.

Theme	Subtheme	Frequency
POLICY & PLANNING		66
	Development of housing standards	17
	Develop more social housing	12
	Zoning and land use changes for development	6
	Development and implementation of housing policies	5
	Focus on climate change/adaptation	5
	Ensure empty houses are used	4
	Housing is outside scope of Council	4
	Open up land for development	4
	Develop more housing	3
	Streamline regulatory reviews	3
	Streamline consenting process	3
HOUSING DIVERSITY AND DESIGN		40
	Development of various housing types/sizes	24
	Development around transport hubs	9
	Implement high density housing/apartments	7
AFFORDABILITY		35
	Strategies to ensure housing is affordable	29
	Long term rental options	6
ACCESSIBILITY		22
	Ensure accessibility for elderly	11
	Increase accessibility to/accessible housing	11
COMMUNITY		10
	Improve safety and drug testing of homes	4
	Develop communal/community housing	3
	Public parks, pools, community hubs etc.	3

Table 6: What should we focus on?

8 Landing a vision for Kāpiti together

8.1 What makes Kāpiti feel like home?

Respondents were asked to describe what makes Kāpiti feel like home.

Theme	Subtheme	Frequency
RIVER/OCEAN HEALTH		330
	Proximity to seaside and beaches	200
	Proximity to local rivers	70
	Proximity to the ocean/sea	60
CONNECTIONS WITH OTHERS		319
	A sense of belonging in the community	133
	Friendly community	89
	Family-oriented Environment	32
	Community diversity	16
	Growing Māori community/identity	15
	Longtime resident/resident	14
	Proximity to friends	10
	Community spaces	7
	Community gardens	3
BIODIVERSITY		246
	Proximity to nature	102
	Enjoy visiting local parks/reserves	53
	Proximity to mountains/hills	35
	Enjoy marine and fresh-water bird life	21
	Proximity to Kāpiti Island	14
	Proximity to wetlands	14
	Proximity to forests	7
NETWORK & CONNECTIVITY		147
	Proximity to facilities	41
	Enjoy the walkways	33
	Accessible and reliable public transport	30
	Enjoy the cycleways	23
	Appreciate the architecture	11
	Easy to get to Wellington	3
	Proximity to the motorway	3

Theme	Subtheme	Frequency
	Services are close in proximity	3
LIFESTYLE		139
	Fond of small-town character	57
	Appreciate the village feel	44
	Rustic/rural appeal of the town	24
	Appreciate the slower lifestyle	14
SUGGESTIONS		131
	Support for recreational activities	20
	Reduce rates	12
	Support local businesses	9
	Concern regarding high density housing	8
	Create indoor recreation centre	7
	Increase youth programs and facilities	7
	Create more green spaces/parks	6
	Later school starts and longer holidays	6
	Create more pools	5
	Improve of public transport options/access	5
	Build more public toilets at walking tracks	4
	Develop sustainable infrastructure	4
	Efficient waste management/recycling systems	4
	Market days	4
	Address vacant properties/improve town appeal	3
	Build community hub	3
	Build more retirement homes	3
	Climate adaption/mitigation strategies	3
	Concern regarding traffic/roads	3
	Concern regarding tree felling	3
	Extend and maintain cycleways	3
	Include waste collection in Council service	3
	Reduce cost/use of school uniforms	3
	Tree planting	3
PEACE & SAFETY		105
	Enjoy the relaxing/peaceful atmosphere	80
	The area is safe	25
RECREATION & LEISURE		99
	Walking	32

Theme	Subtheme	Frequency
	Activities catering to all people	13
	Playgrounds	10
	Outdoor activities	9
	Queen Elizabeth Park	9
	Dog-friendly community	6
	Pools	6
	Activities available at libraries	4
	Sports/play	4
	Active club communities	3
	Fishing	3
INCOME & WORK		71
	Enjoy visiting local shops	46
	Business networks/community	10
	Schools	6
	Tourism	5
	Local employment opportunities	4
CULTURE		52
	Appreciate the diversity in local arts and culture	23
	Support for the arts and culture	12
	Appreciate the local/iwi history	9
	Creative culture	8
LAND USE & QUALITY		47
	Low rise buildings	21
	The location	14
	Enjoy and take pride in gardens	12
CLIMATE & CHANGE		30
	Enjoy the local climate and weather	30
FOOD		29
	Enjoy the variety of cafés/restaurants	29
HOUSING		9
	Home ownership	9
AIR QUALITY		1
	Appreciate the sunsets	1

Table 7 summarises the most common themes.

Overview of responses

River/ocean health — Respondents say that they love the beaches and the relaxed lifestyle in the area. They also appreciate the proximity to rivers, and the ocean, as well as the sense of community and the village atmosphere.

Connections with others — Respondents emphasise the importance of friendly and connected communities and sense of belonging in the area. They enjoy the close-knit community and the sense that everyone knows each other well. The slower pace of life, sense of safety, and various outdoor activities are also praised.

Biodiversity — Respondents express a deep appreciation for the biodiversity and natural environment of Kāpiti. They value having nature on their doorstep. Many emphasise the importance of trees, open spaces, and wetlands for environmental services, climate change resilience, and overall beauty. There is a desire to protect and increase the extent of canopy cover, retain mature trees, and promote urban biodiversity.

Theme	Subtheme	Frequency
RIVER/OCEAN HEALTH		330
	Proximity to seaside and beaches	200
	Proximity to local rivers	70
	Proximity to the ocean/sea	60
CONNECTIONS WITH OTHERS		319
	A sense of belonging in the community	133
	Friendly community	89
	Family-oriented Environment	32
	Community diversity	16
	Growing Māori community/identity	15
	Longtime resident/resident	14
	Proximity to friends	10
	Community spaces	7
	Community gardens	3
BIODIVERSITY		246
	Proximity to nature	102
	Enjoy visiting local parks/reserves	53
	Proximity to mountains/hills	35
	Enjoy marine and fresh-water bird life	21
	Proximity to Kāpiti Island	14
	Proximity to wetlands	14
	Proximity to forests	7
NETWORK & CONNECTIVITY		147
	Proximity to facilities	41
	Enjoy the walkways	33

Theme	Subtheme	Frequency
	Accessible and reliable public transport	30
	Enjoy the cycleways	23
	Appreciate the architecture	11
	Easy to get to Wellington	3
	Proximity to the motorway	3
	Services are close in proximity	3
LIFESTYLE		139
	Fond of small-town character	57
	Appreciate the village feel	44
	Rustic/rural appeal of the town	24
	Appreciate the slower lifestyle	14
SUGGESTIONS		131
	Support for recreational activities	20
	Reduce rates	12
	Support local businesses	9
	Concern regarding high density housing	8
	Create indoor recreation centre	7
	Increase youth programs and facilities	7
	Create more green spaces/parks	6
	Later school starts and longer holidays	6
	Create more pools	5
	Improve of public transport options/access	5
	Build more public toilets at walking tracks	4
	Develop sustainable infrastructure	4
	Efficient waste management/recycling systems	4
	Market days	4
	Address vacant properties/improve town appeal	3
	Build community hub	3
	Build more retirement homes	3
	Climate adaption/mitigation strategies	3
	Concern regarding traffic/roads	3
	Concern regarding tree felling	3
	Extend and maintain cycleways	3
	Include waste collection in Council service	3
	Reduce cost/use of school uniforms	3
	Tree planting	3
PEACE & SAFETY		105

Theme	Subtheme	Frequency
RECREATION & LEISURE	Enjoy the relaxing/peaceful atmosphere	80
	The area is safe	25
		99
	Walking	32
	Activities catering to all people	13
	Playgrounds	10
	Outdoor activities	9
	Queen Elizabeth Park	9
	Dog-friendly community	6
	Pools	6
	Activities available at libraries	4
	Sports/play	4
	Active club communities	3
	Fishing	3
INCOME & WORK		71
	Enjoy visiting local shops	46
	Business networks/community	10
	Schools	6
	Tourism	5
	Local employment opportunities	4
CULTURE		52
	Appreciate the diversity in local arts and culture	23
	Support for the arts and culture	12
	Appreciate the local/iwi history	9
	Creative culture	8
LAND USE & QUALITY		47
	Low rise buildings	21
	The location	14
	Enjoy and take pride in gardens	12
CLIMATE & CHANGE		30
	Enjoy the local climate and weather	30
FOOD		29
	Enjoy the variety of cafés/restaurants	29
HOUSING		9
	Home ownership	9
AIR QUALITY		1
	Appreciate the sunsets	1

Table 7: What makes Kāpiti feel like home?

8.2 What changes do you want to see in Kāpiti now?

Respondents were asked what changes they would like to see in Kāpiti in the near future. Table 8 summarises these changes.

Overview of responses

Connections with others — Respondents express a need for more connections with others in various ways. These include creating spaces for meeting new people and making friends, providing more activities for youth and teens, improving community facilities like libraries and community centres, and promoting cultural celebrations and diversity. The focus is on fostering a sense of community and providing opportunities for social interaction and engagement.

Network & connectivity — Respondents are concerned about the busy traffic on Kāpiti Road and the need for improved roading and speed limits in various areas. They also want better public transport options, especially for youth, and the need for more parking spaces and infrastructure improvements. Overall, there is a focus on improving connectivity, safety, and accessibility in the region.

Income & work — Some important aspects highlighted by respondents included the need for improved roading options for businesses to thrive, the desire for a vibrant town centre, and the need for more jobs. There are also suggestions for improving infrastructure, attracting tourists, and supporting local businesses.

Theme	Subtheme	Frequency
CONNECTIONS WITH OTHERS		407
	Create and maintain inclusive spaces	112
	Development of youth-focused activities/facilities	98
	Support for community sports/outdoor activities	57
	More cultural events/activities/promotion	39
	More/maintain recreational areas for all ages	38
	Develop spaces for gatherings/events	23
	Improve accessibility/usage of public spaces	20
	New/improve Waikanae Library	10
	Concern regarding rapid community growth	5
	New/improve community hall	5
NETWORK & CONNECTIVITY		240
	Extend public transport network	72

District Vision — Summary Report

Theme	Subtheme	Frequency
	Improve traffic management for increased cars	48
	Improve road safety and use with increased cars	39
	Extend and maintain cycleways	28
	Extend and maintain footpaths	25
	Infrastructure investment	15
	Improve roads	13
INCOME & WORK		142
	Encourage investment in local shopping and dining	44
	Support for local businesses/groups	25
	Promote employment/jobs	22
	Address vacant properties/improve town appeal	18
	Enhance tourism industry/new branding	15
	Improve visual appeal/character of businesses	12
	Stop commercialising/development	6
HOUSING		122
	Strategies to ensure housing is affordable	27
	Focus on housing development	24
	Maintain affordable rates	17
	Reduce costs associated with housing development	15
	Concern regarding high density housing	14
	Increase accessibility to/accessible housing	8
	Infrastructure development for new housing areas	7
	Balance intensification with character preservation	5
	Reduce urban sprawl	5
PARTNERSHIP		96
	Thriving connected community/supportive of others	32
	Strengthen community input/decision making	20
	Focus on core Council functions	15
	Incorporate info boards/signage	13
	Enhance communication (e.g. local papers)	10
	Only consult with ratepayers	3

Theme	Subtheme	Frequency
	Reduce Council expenditure	3
PEACE & SAFETY		89
	Improve safety	50
	Increase police presence	18
	Signage for Tsunami safe zones needed	11
	Improve animal safety/control	10
HEALTH		80
	Establish local healthcare facilities	49
	Improve access to GP services	13
	Improve access to hospital services	13
	Improve access to mental health services	5
BIODIVERSITY		74
	Protect beaches/waterways and green Kāpiti	74
CLIMATE & CHANGE		52
	Efficient waste management/recycling systems	27
	Focus on climate change/mitigation	18
	Focus on food resilience	7
LAND USE & QUALITY		40
	Concern regarding high density housing	13
	Infrastructure development for new housing areas	9
	Protect the Airport	8
	Balance intensification with character preservation	7
	Reduce urban sprawl	3
EDUCATION & TRAINING		31
	More educational courses/facilities	17
	New school/s	14
WATER		23
	Improve water services	12
	Address concerns around water quality/waste	11
RECREATION & LEISURE		3
	Increase number of playgrounds	3
CULTURE		3
	Improve Māori support	3

Table 8: What changes do you want to see in Kāpiti now?

8.3 What change do you want to see in Kāpiti in our next generation?

Respondents were asked about what changes that they want to see in Kāpiti in the next generation.

Theme	Subtheme	Frequency
CONNECTIONS WITH OTHERS		508
	Upgrade public amenities (i.e. parks, library)	88
	Create and maintain inclusive spaces	83
	Thriving connected community/supportive of others	79
	Development of youth-focused activities/facilities	53
	More cultural events/activities/promotion	49
	Maintain small-town character/status quo	42
	Support for community sports/outdoor activities	38
	More recreational areas for various age groups	27
	Improve accessibility/usage of public spaces	20
	New/improve Waikanae Library	17
	Increase use of Te Reo Māori/focus on local Māori	6
	Support for vulnerable/homeless/sick	6
NETWORK & CONNECTIVITY		248
	Improve traffic management for increased cars	51
	Extend public transport network	44
	Improve road safety and use with increased cars	44
	Extend and maintain footpaths	35
	Extend and maintain cycleways	26
	Infrastructure investment	26
	Restrict and monitor vehicles on beaches	10
	Focus on renewable energy	9
	Improve horse access	3
INCOME & WORK		222

Theme	Subtheme	Frequency
	Encourage investment in local shopping and dining	73
	Address vacant properties/improve town appeal	50
	Support for local businesses/groups	31
	Promote employment/jobs	18
	Maintain affordable rates	11
	Enhance tourism industry/new branding	10
	Stop commercialising/development	10
	Strengthen community input/decision making	9
	Enhance communication (e.g. local papers)	5
	Improve visual appeal/character of businesses	5
HOUSING		136
	Strategies to ensure housing is affordable	30
	Focus on increasing housing supply	29
	Balance intensification with character preservation	24
	Concern regarding high density housing	14
	Infrastructure development for new housing areas	13
	Reduce urban sprawl	8
	Implement high density housing/apartments	7
	Reduce costs associated with housing development	7
	Increase accessibility to/accessible housing	4
BIODIVERSITY		120
	Protect beaches/waterways and green Kāpiti	106
	Upgrade/build seawalls	14
LAND USE & QUALITY		83
	Balance intensification with character preservation	28
	Concern regarding high density housing	14
	Infrastructure development for new housing areas	14
	Reduce urban sprawl	8
	Implement high density housing/apartments	7
	Reduce costs associated with housing development	7
	Protect the Airport	5

Theme	Subtheme	Frequency
CLIMATE & CHANGE		63
	Efficient waste management/recycling systems	35
	Focus on climate change	16
	Focus on food resilience	12
PEACE & SAFETY		61
	Improve safety	46
	Improve animal safety/control	10
	Increase police presence	5
HEALTH		45
	Establish local healthcare facilities	35
	Improve access to hospital services	7
	Improve access to GP services	3
EDUCATION & TRAINING		38
	New school/s	20
	More educational courses/facilities	18
WATER		35
	Address concerns around water quality/waste	30
	Improve water services	5
PARTNERSHIP		34
	Incorporate Waikanae Futures Document	22
	Focus on core Council functions	6
	Reduce costs	6

Table 9 details proposed changes.

Overview of responses

Connections with others — Respondents express a strong desire for stronger connections with others in the community. They emphasise the importance of community spaces, such as a new community hall or library, where people can gather and engage in activities. Additionally, there is a focus on improving infrastructure, healthcare, and recreational facilities to create a more inclusive and vibrant community.

Network & connectivity — Respondents highlighted the need for improved public transport, including better bus services and more frequent trains. They also expressed a desire for safer roads and lower speed limits, particularly in busy areas.

Income & work — Respondents express a variety of opinions about income and work. Some suggest increasing affordable housing options and promoting mixed-use higher-rise buildings in town centres to provide more affordable housing without

affecting retail space. Others emphasise the need for more job opportunities, support for local businesses, and fair wages. There is also a focus on preserving the character of the community and creating a diverse and vibrant local economy.

Theme	Subtheme	Frequency
CONNECTIONS WITH OTHERS		508
	Upgrade public amenities (i.e. parks, library)	88
	Create and maintain inclusive spaces	83
	Thriving connected community/supportive of others	79
	Development of youth-focused activities/facilities	53
	More cultural events/activities/promotion	49
	Maintain small-town character/status quo	42
	Support for community sports/outdoor activities	38
	More recreational areas for various age groups	27
	Improve accessibility/usage of public spaces	20
	New/improve Waikanae Library	17
	Increase use of Te Reo Māori/focus on local Māori	6
	Support for vulnerable/homeless/sick	6
NETWORK & CONNECTIVITY		248
	Improve traffic management for increased cars	51
	Extend public transport network	44
	Improve road safety and use with increased cars	44
	Extend and maintain footpaths	35
	Extend and maintain cycleways	26
	Infrastructure investment	26
	Restrict and monitor vehicles on beaches	10
	Focus on renewable energy	9
	Improve horse access	3
INCOME & WORK		222
	Encourage investment in local shopping and dining	73
	Address vacant properties/improve town appeal	50

Theme	Subtheme	Frequency
	Support for local businesses/groups	31
	Promote employment/jobs	18
	Maintain affordable rates	11
	Enhance tourism industry/new branding	10
	Stop commercialising/development	10
	Strengthen community input/decision making	9
	Enhance communication (e.g. local papers)	5
	Improve visual appeal/character of businesses	5
HOUSING		136
	Strategies to ensure housing is affordable	30
	Focus on increasing housing supply	29
	Balance intensification with character preservation	24
	Concern regarding high density housing	14
	Infrastructure development for new housing areas	13
	Reduce urban sprawl	8
	Implement high density housing/apartments	7
	Reduce costs associated with housing development	7
	Increase accessibility to/accessible housing	4
BIODIVERSITY		120
	Protect beaches/waterways and green Kāpiti	106
	Upgrade/build seawalls	14
LAND USE & QUALITY		83
	Balance intensification with character preservation	28
	Concern regarding high density housing	14
	Infrastructure development for new housing areas	14
	Reduce urban sprawl	8
	Implement high density housing/apartments	7
	Reduce costs associated with housing development	7
	Protect the Airport	5
CLIMATE & CHANGE		63
	Efficient waste management/recycling systems	35
	Focus on climate change	16

Theme	Subtheme	Frequency
	Focus on food resilience	12
PEACE & SAFETY		61
	Improve safety	46
	Improve animal safety/control	10
	Increase police presence	5
HEALTH		45
	Establish local healthcare facilities	35
	Improve access to hospital services	7
	Improve access to GP services	3
EDUCATION & TRAINING		38
	New school/s	20
	More educational courses/facilities	18
WATER		35
	Address concerns around water quality/waste	30
	Improve water services	5
PARTNERSHIP		34
	Incorporate Waikanae Futures Document	22
	Focus on core Council functions	6
	Reduce costs	6

Table 9: What changes would you like to see in Kāpiti in the next generation?

9 Te Mahi me te whai moni | Employment and income

9.1 How can Council and government better support business?

Respondents were asked how Council and government could better support business.

Theme	Subtheme	Frequency
BUSINESS SUPPORT IDEAS		31
	Support for new businesses	15
	Flexible workspaces i.e. co-spaces	6
	Improve promotion e.g. advertising	5

	Increase access to affordable business premises	5
COUNCIL ROLE		27
	Address vacant properties/improve town appeal	12
	Infrastructure investment	7
	Engagement with local businesses	4
	Reduce Council imposed barriers to success	4

Table 10 details suggested actions to improve business support.

Overview of responses

Business support ideas — Respondents are calling for various business support ideas such as providing hot desk facilities locally for remote workers, supporting the creation of small business workspaces, and creating a free advertisement area for small businesses.

Council role — Respondents highlighted various aspects related to the council role. Some mentioned that the Council should focus on providing top-class infrastructure and have a bigger picture approach in supporting new businesses, while others emphasised the need to reduce rates and make it easier for businesses to operate by reducing red tape. There was also a call for the Council to revamp and upgrade amenities, attract more businesses to the area, and support the local community and retailers. Improving parking areas around transportation hubs was also mentioned as a priority.

Theme	Subtheme	Frequency
BUSINESS SUPPORT IDEAS		31
	Support for new businesses	15
	Flexible workspaces i.e. co-spaces	6
	Improve promotion e.g. advertising	5
	Increase access to affordable business premises	5
COUNCIL ROLE		27
	Address vacant properties/improve town appeal	12
	Infrastructure investment	7
	Engagement with local businesses	4
	Reduce Council imposed barriers to success	4

Table 10: How can council and government better support business?

9.2 What needs to happen to improve opportunities?

Respondents were asked what could be done to improve opportunities. Table 11 details the most frequently mentioned suggestions.

Overview of responses

Policy & planning — Respondents express a desire for less bureaucracy and quicker consent processes. They also suggest incentivising and attracting larger businesses and government departments, as well as creating opportunities for potential employers and employees to connect through events. Additionally, there is a call for the Council to focus on creating a favourable environment for businesses to develop, including reliable infrastructure and good communication.

Community engagement — Respondents emphasise the importance of collaboration between the Energise Ōtaki initiative and local iwi and hapu in community engagement. They show support for kaumatua services being offered freely but question how this can be appropriately reimbursed. The respondents also suggest the implementation of more opportunities for food swap, pātaka, and trading with free access to Council facilities.

Theme	Subtheme	Frequency
POLICY & PLANNING		21
	Attract business/govt employers	12
	Employment initiatives	9
COMMUNITY ENGAGEMENT		6
	Engagement with Māori communities	2
	Support for community organisations, events	2
	Citizens' assemblies	1
	Community meetings	1
EDUCATION & TRAINING		3
	Education and training are required	3
NETWORKS & CONNECTIVITY		1
	Extend public transport network	1
ENVIRONMENT		1
	Tree planting programs	1

Table 11: What needs to happen to improve opportunities

Selected Responses

"Less red tape and faster consenting processes so people can act on initiatives to improve the community."

What needs to happen to improve opportunities?

"Employment isn't a problem in this District. Spend the money on other things."

What needs to happen to improve opportunities?

10 Nga hononga | Networks and connections

10.1 What more can we do?

Respondents were asked what more Council could do.

Theme	Subtheme	Frequency
NETWORKS & CONNECTIVITY		230
	Improve public transport/hubs	88
	Development of walkable/bike-friendly paths	54
	Improve roads	43
	Nothing more needs doing	18
	More accessible commercial services/retail areas	12
	Improve road safety and use with increased cars	7
	Improve public amenities (i.e. toilet facilities)	4
	Improve public facilities	4
CONNECTIONS WITH OTHERS		135
	Support for community organisations, events	53
	Fostering connections between diverse groups	22
	Inclusivity/accessibility for elderly/disabled	15
	Thriving connected community/supportive of others	15
	Friendly community	13
	Encourage youth programs/initiatives	9
	Welcoming community	8
PARTNERSHIP		40
	Emphasis on democratic inclusivity/collaboration	26
	Enhance communication/education	9
	Focus on District's strength/branding	5

Theme	Subtheme	Frequency
CLIMATE & CHANGE		27
	Enhance natural spaces (i.e. bike paths)	15
	Encourage sustainable practices	6
	Enhance resilience/emergency preparedness	6
HEALTH		25
	Support for recreational activities	17
	Enhance parks (i.e. water fountains)	8
LAND USE & QUALITY		8
	Improve housing solutions	8
PEACE & SAFETY		5
	Policies for healthier food/drink options	5

Table 12 details suggestions made by respondents.

Overview of responses

Networks & connectivity — Respondents highlight the need for improved connectivity through better bike paths in general, bike and pedestrian paths along streams. There is also a desire for improved public transportation options, including more train services, regular bus services, and extended rail electrification to Ōtaki.

Connections with others — Respondents emphasise the importance of connections with others in the community. They suggest encouraging residents to take in boarders or create tiny houses for older residents to combat loneliness and solve the accommodation problem. Additionally, respondents want to see better connection and accessibility to community spaces like community halls, museums, and libraries.

Partnership — Respondents express a desire for collaboration, respect, inclusivity, and effective communication with all members of the community, as well as recognising and valuing the contributions of different groups, such as social entrepreneurs and Māori.

Theme	Subtheme	Frequency
NETWORKS & CONNECTIVITY		230
	Improve public transport/hubs	88
	Development of walkable/bike-friendly paths	54
	Improve roads	43
	Nothing more needs doing	18
	More accessible commercial services/retail areas	12
	Improve road safety and use with increased cars	7

Theme	Subtheme	Frequency
	Improve public amenities (i.e. toilet facilities)	4
	Improve public facilities	4
CONNECTIONS WITH OTHERS		135
	Support for community organisations, events	53
	Fostering connections between diverse groups	22
	Inclusivity/accessibility for elderly/disabled	15
	Thriving connected community/supportive of others	15
	Friendly community	13
	Encourage youth programs/initiatives	9
	Welcoming community	8
PARTNERSHIP		40
	Emphasis on democratic inclusivity/collaboration	26
	Enhance communication/education	9
	Focus on District's strength/branding	5
CLIMATE & CHANGE		27
	Enhance natural spaces (i.e. bike paths)	15
	Encourage sustainable practices	6
	Enhance resilience/emergency preparedness	6
HEALTH		25
	Support for recreational activities	17
	Enhance parks (i.e. water fountains)	8
LAND USE & QUALITY		8
	Improve housing solutions	8
PEACE & SAFETY		5
	Policies for healthier food/drink options	5

Table 12: What more can we do?

Selected Responses

"Those with hidden disabilities are getting left behind & don't have a voice. Better access to education, jobs, housing that is appropriate."

What more can we do?

"Regular commuter trains between Levin and Wellington stopping at all stations would grow Ōtaki amazingly."

What more can we do?

"I normally drive but would love to take the train more often. Direct bus routes from Paraparaumu to Waikanae using the expressway."

What more can we do?

"My son could have studied at Palmerston Ucol through college while still studying a few subjects. However, Ucol not providing transport for some options. Zero public transport available that way means no access to Ucol up there. Roads are so shocking for an inexperienced driver means he'll be risking too much to commute there. Hence that is no longer an option for him. Now need to go to Wellington and he'll have to pay for his first year of tertiary instead. Very sad that being from a deprived area means just that. Deprived of opportunities due to lack of public transport etc."

What more can we do?

"Direct bus routes from Paraparaumu to Waikanae using the expressway."

What more can we do?

11 Te Matauranga | Education

11.1 What needs to change in terms of education services?

Respondents were asked what needed to change in terms of education services. Table 13 details the most requested changes.

Overview of Responses

Education — Respondents are expressing the need for new schools, specifically a high school and an intermediate school, to address the increasing student population and relieve pressure on existing schools. They also highlight the importance of updating the school system to better prepare students for real-life skills and introduce new ways of learning. Additionally, there are suggestions for expanding educational opportunities, such as apprenticeship programs and cultural education.

Theme	Subtheme	Frequency
EDUCATION		45
	New schools/education facilities	22
	Support education providers	6
	Provide pathways/courses to enter employment	4
	Relieve pressure on schools	4
	Alternative schooling opportunities	3
	Health and fitness education	3
	Te Reo Māori education	3
INFRASTRUCTURE		4
	Improve public transport options/access	4
STAFF		3
	Increase number of teachers	3
GENERAL COMMENTS		3
	Address road safety around schools	1
	Further information needed	1
	Not a core function of Council	1

Table 13: What needs to change in terms of education services

Selected Responses

"Education comes in so many forms - and we all need more of it in so many ways!"

What needs to change in terms of education services?

"Build a new high school - With all of the growth happening, we should start planning for a new high school to be built in Waikanae."

What needs to change in terms of education services?

11.2 What more can be done to strengthen pathways?

Respondents were asked what more Council could do to strengthen career pathways. Table 14 details these suggestions.

Overview of responses

Education — Respondents emphasise the importance of affordable regular transport for children to safely and promptly reach school. Additionally, there are suggestions to provide more information on university course selection, improve sex education and facilities, support ADHD and ADD students, and enhance opportunities for employment through services, internships, and trades training.

Employment — Respondents highlight the importance of facilitating older workers into the workforce and suggest that it requires consideration and effort. Additionally, there is a call for the Council to play an active role in encouraging youth employment through internships and apprenticeship programs, while also recognising and utilising the skills of older people. The Youth Council emphasises the need for work experience opportunities and suggests involving employers and internship programs in schools.

Theme	Subtheme	Frequency
EDUCATION		10
	Focus on career education	2
	Improve public transport options/access	2
	Adult education programs	1
	Continue sex education in schools	1
	Provide pathways/courses to enter employment	1
	Support for ADD/ADHD/neurodiverse learners	1
	Support for entry into tertiary studies	1
	Sustainability education	1
EMPLOYMENT		8
	Focus on internships for the youth	4
	Support older workers	4
VOLUNTEERING		1
	Support volunteers	1

Theme	Subtheme	Frequency
COUNCIL		1
	Focus on core Council functions	1
INFRASTRUCTURE		1
	Improve toilet facilities in schools	1

Table 14: What more can be done to strengthen pathways?

Selected Responses

"Council could have a policy, perhaps, of actively encouraging youth employment through internships and apprenticeship programmes. Council could be an example for other employers. At the other end of the age continuum, could also actively seek ways of using the skills of older people."

What more can be done to strengthen pathways?

12 Te Tapoi | Tourism

12.1 What more can be done?

Respondents were asked what more could be done for tourism in Kāpiti. Table 15 details these suggestions.

Overview of responses

Cultural tourism — Respondents say that engaging with local artists and promoting art walks and installations can encourage visitors to explore the region. They also suggest incentivising developers to incorporate art into buildings and promoting sustainable and innovative practices. Overall, respondents highlight the cultural and artistic aspects of the region and its commitment to diversity and sustainability.

Environmental tourism — Respondents highlight several important aspects of environmental tourism in the area. The idea of creating a central park on restored wetlands, with cultural connections and storytelling, is also mentioned as a unique opportunity. Additionally, there is a focus on the potential for Kāpiti to become a nature destination, highlighting the existing natural environments and biodiversity that can be protected and enhanced through tourism.

Recreational activities — Respondents mentioned various aspects related to recreational activities. Some highlighted the need for upgrading existing facilities, such as the Raumati Splash Pad and the old Raumati pool area. Others suggested the establishment of a "Brewtown"-style attraction in Kāpiti, which would cater to different age groups with various activities, restaurants, and bars. The reopening of the Ōtaki Gorge Road and its campground was also mentioned as a priority, along

with the development of more family-friendly rainy-day options and child-friendly landmarks and activities for Kāpiti.

Theme	Subtheme	Frequency
CULTURAL TOURISM		100
	Promote as friendly village destination	62
	Promote and host local events	17
	Collaborate with Tangata Whenua	8
	Collaborate with local artists	8
	Create art walks	5
ENVIRONMENTAL TOURISM		41
	Promote natural assets	35
	Pest control/predator free zones	3
	Regenerate native biodiversity	3
RECREATIONAL ACTIVITIES		29
	Indoor recreation centre	8
	Activities catering to all people	6
	Family recreation	6
	Open up areas for camping	5
	Reopen Ōtaki Gorge Road	4
NETWORK & CONNECTIVITY		14
	Extend and maintain cycleways/footpaths	9
	Improve public transport options/access	5
HOSPITALITY		14
	Promote dining options	10
	Improve and promote shopping	4
EDUCATIONAL TOURISM		11
	Develop more history trails	4
	Use of green architecture	4
	Environmental education	3
TOURISM STRATEGY & MANAGEMENT		9
	Management needed to protect beaches	5
	Advertise Kāpiti Coast	4
EVENTS		6
	Host open air concerts	3
	Host sporting events	3

Table 15: What more can be done?

Selected Responses

“Erect a #lovekapiti sign like the Lake Taupo sign, with the backdrop of Kāpiti Island and the South Island, this would be a big attraction and provide global exposure through personal social media.”

What more can be done?

“The marketing of the whole region needs improvement. With better access to the beach at the village end and a better Waterfront walkway such as at Param people would come to enjoy the café culture art gallery and beach.”

What more can be done?

“Promote the Ōtaki market days more. Have more markets or concerts to encourage entertainment visitors.”

What more can be done?

“I think we should put more energy towards promoting our nature... such as our beaches and bush by taking care of our coasts and running tour groups and experiences.”

What more can be done?

13 Hauora | Health

13.1 What are you most concerned/worried about in terms of provision of health care in Kāpiti?

Respondents were asked what concerned them the most about provision of health care in Kāpiti. Table 16 details respondent concerns.

Overview of responses

Health services & accessibility — Respondents expressed concerns about the lack of doctors, emergency care, and specialist services in their area. They emphasised the need for better accessibility to healthcare, including GP services, mental health support, and medical centres. Many also advocated for the establishment of a local hospital to cater to the growing population and to address the difficulties of traveling to Wellington or other distant locations for medical care.

The distance to existing hospitals, long wait times, and the need for after-hours care were major issues raised by the respondents. Additionally, there were calls for improved support services, including home help and disability care, as well as better access to prescriptions and GP appointments.

Community & social wellbeing — Respondents emphasise the importance of a diverse, safe, healthy, well-connected community in tune with nature in promoting overall wellbeing. Respondents also highlight the need for cultural inclusivity and access to services that are responsive to the needs of Māori communities to address existing health inequities.

Theme	Subtheme	Frequency
HEALTH SERVICES/ACCESSIBILITY		96
	Concern regarding lack of hospital services	37
	Concern regarding limited access to GP services	24
	Concern regarding access to mental health services	10
	Care/services for elderly/people w/ disabilities	9
	Concern regarding lack of emergency care services	7
	Concern regarding lack of after-hours care	6
	Concern regarding access home support services	3
COMMUNITY/SOCIAL WELLBEING		16
	Concern with lack of community connection/support	11
	Engagement with Māori communities	5
HEALTHY LIVING/EDUCATION		12
	Activities/facilities promoting healthy living	12
AMENITIES & INFRASTRUCTURE		7
	Concern regarding transportation and traffic	7

Table 16: What are you most concerned/worried about in terms of provision of health care in Kāpiti?

Selected Responses

"Kāpiti Coast should have an A+E/urgent care hospital - start planning this now!"

What are you most concerned/worried about in terms of provision of health care in Kāpiti?

13.2 What should we focus on to help people in Kāpiti lead healthy lives?

Respondents were asked what Council should focus on to help the community of Kāpiti lead healthy lives.

Theme	Subtheme	Frequency
HEALTH SERVICES/ACCESSIBILITY		98
	Improve access to hospital services	33
	Improve access to GP services	29
	Improve access to pharmacies	9
	Elderly care and dementia services	6
	Improve access to mental health services	6
	Increase home support services	6
	Support ambulance services	6
	Improve access to dental care	3
AMENITIES & INFRASTRUCTURE		46
	Public parks, pools, community hubs/gardens etc.	16
	Improve transportation and traffic issues	11
	Extend and maintain cycleways/footpaths	8
	Increase community outdoor gyms	5
	Focus on water quality (do not fluoridate)	3
	Indoor & outdoor playgrounds (e.g. shaded, fenced)	3
HEALTHY LIVING/EDUCATION		37
	Education on healthy living	13
	Focus on youth activities	9
	Correlation between environmental/public health	6
	Exercise equipment/facilities for all ages	6
	Support/education of sports teams	3
POLICY/ENVIRONMENTAL HEALTH		16
	Policies to attract/retain medical professionals	12
	Smoke-free/vape-free policies	4
COMMUNITY/SOCIAL WELLBEING		9

Theme	Subtheme	Frequency
	Community connection through group activities	9
HOUSING		4
	Quality housing	2
	MSD housed in each ward	1
	Support boarding as an accommodation option	1

Table 17 details respondent suggestions.

Overview of responses

Health services & accessibility — Respondents have expressed the need for improved access to health services in Kāpiti, including the establishment of a hospital, more doctors and nurses, and additional medical clinics. They have also highlighted the importance of support for elderly individuals, including better rehabilitation facilities and aftercare day facilities. Additionally, they have emphasised the need for services such as community midwives and an increase in home support services.

Amenities & infrastructure — Respondents are calling for more free outdoor gyms, covered outdoor gyms, and grants for sports clubs. They also want better playgrounds that are shaded and fenced, more dog off-lead places, and extended cycleways and walkways. Other suggestions include community veggie gardens, reduced pollution from road traffic, and increased access to mental health services and outdoor recreational areas.

Healthy living & education — Respondents mention the need to prioritise education in the home and school and expressed opposition to the presence of vape shops. They also call for policy changes related to protecting children from junk food marketing and creating healthier public spaces.

Theme	Subtheme	Frequency
HEALTH SERVICES/ACCESSIBILITY		98
	Improve access to hospital services	33
	Improve access to GP services	29
	Improve access to pharmacies	9
	Elderly care and dementia services	6
	Improve access to mental health services	6
	Increase home support services	6
	Support ambulance services	6

Theme	Subtheme	Frequency
AMENITIES & INFRASTRUCTURE	Improve access to dental care	3
		46
	Public parks, pools, community hubs/gardens etc.	16
	Improve transportation and traffic issues	11
	Extend and maintain cycleways/footpaths	8
	Increase community outdoor gyms	5
	Focus on water quality (do not fluoridate)	3
	Indoor & outdoor playgrounds (e.g. shaded, fenced)	3
HEALTHY LIVING/EDUCATION		37
	Education on healthy living	13
	Focus on youth activities	9
	Correlation between environmental/public health	6
	Exercise equipment/facilities for all ages	6
	Support/education of sports teams	3
POLICY/ENVIRONMENTAL HEALTH		16
	Policies to attract/retain medical professionals	12
	Smoke-free/vape-free policies	4
COMMUNITY/SOCIAL WELLBEING		9
	Community connection through group activities	9
HOUSING		4
	Quality housing	2
	MSD housed in each ward	1
	Support boarding as an accommodation option	1

Table 17: What should we focus on to help people in Kāpiti lead healthy lives?

14 Taiao | Environment

14.1 What are you most concerned/worried about in terms of our natural environment?

Respondents were asked what concerns them the most with respect to the natural environment. Table 18 summarises these concerns.

Overview of responses

Biodiversity — Respondents emphasise the importance of shade and the need for a more strategic approach in providing green spaces and protecting the environment. They express concerns about the loss of trees and biodiversity due to housing intensification and a lack of recognition of the importance of trees and wetlands.

Theme	Subtheme	Frequency
BIODIVERSITY		5
	Concern regarding lack of greening	5
HOUSING		3
	Concern regarding intensification of housing	3
LAND USE & QUALITY		3
	Concern regarding intensification of housing	3
RIVER/OCEAN HEALTH		3
	Concern regarding loss of wetlands	3
CONNECTIONS WITH OTHERS		2
	Concern for future generations	1
	Concern regarding impact of freedom camping	1
NETWORKS & CONNECTIVITY		2
	Restrict and monitor vehicles on beaches	2
CLIMATE & CHANGE		1
	Concern regarding sea level rise	1
PARTNERSHIP		1
	Concern with lack of support for volunteer groups	1

Table 18: What are you most concerned/worried about in terms of our natural environment?

Selected Responses

"Need for a more strategic approach re green space provision + good design."

"Loss of trees and biodiversity due to housing intensification and general lack of recognition of importance of trees and wetlands - Pockets of native trees are being retained but not ecological corridors."

What are you most concerned/worried about in terms of our natural environment?

14.2 What should we focus on to help improve the condition, health and resilience of our natural environment?

Respondents were asked what the Council should focus most on to improve the sustainability of the natural environment. Table 19 details what respondents feel the Council should focus on.

Overview of responses

Land use & quality — Respondents stress the importance of incorporating solar power as a standard feature for new homes. Preserving rural areas between towns like Paekākāriki, Paraparaumu, Waikanae, and Ōtaki is highlighted as a crucial measure to protect these communities. They also express concerns about continuing housing developments in flood-prone areas and along the beach front and Kāpiti Road.

Theme	Subtheme	Frequency
LAND USE & QUALITY		4
	Require solar panels on new builds	2
	Conserve and protect open spaces/rural areas	1
	Prohibit development on flood prone land	1
BIODIVERSITY		3
	Protect beaches/waterways and green Kāpiti	3
NETWORKS & CONNECTIVITY		3
	Restrict and monitor vehicles on beaches	3
HOUSING		2
	Require solar panels on new builds	2
CLIMATE & CHANGE		2

Theme	Subtheme	Frequency
	Climate adaption strategies	1
	Focus on emissions reduction	1
EDUCATION & TRAINING		1
	Environmental education	1
RIVER/OCEAN HEALTH		1
	Focus on impact of development on rivers	1

Table 19: What should we focus on to help improve the condition, health and resilience of our natural environment?

Selected Responses

" Adopt the 3,30,300 rule. This requires every householder to be able to see 3 good sized trees, and 30% of urban areas with tree canopy, and every household to be within 300 metres of an open space."

What should we focus on to help improve the condition, health and resilience of our natural environment?

"Restrict vehicle access to the beaches - sand dunes and vulnerable areas that support our native menu and shellfish."

What should we focus on to help improve the condition, health and resilience of our natural environment?

15 Te whakamahinga whenua | Land use

15.1 How could we better use land and public spaces in Kāpiti?

Respondents were asked to describe how Council could make better use of land and public spaces. Table 20 details respondent feedback.

Overview of responses

Land use & quality — Respondents value the small town feel and access to nature in Kāpiti and do not want the area to be overly developed. They also emphasise the need for better controls on forestry slash to protect waterways and beaches. Additionally, they suggest building up instead of out to manage development. The protection and preservation of green spaces and suburban villages are important aspects mentioned by the respondents.

Housing — Respondents emphasise the importance of housing that is suitable for different needs and disabilities, including features like accessible showers, kitchens, and doorways. They express concern about an approaching housing crisis and suggest including older people with disabilities and retirees in housing provisions. There is a suggestion that tenants should contribute up to 50% of their income towards housing instead of the current 30% to cover Council maintenance, rates, and insurance. Additionally, there is a significant shortage of single-level homes with 1-2 bedrooms.

Theme	Subtheme	Frequency
LAND USE & QUALITY		7
	Protect beaches/waterways and green Kāpiti	4
	Reduce urban sprawl	3
HOUSING		5
	Increase accessibility to/accessible housing	1
	Increase number of small bedroom houses	1
	Reduce eligible retirement age	1
	Strategies to ensure housing is affordable	1
	Tenants in social housing should pay 50% of wage	1
NETWORKS & CONNECTIVITY		3
	Infrastructure investment	2
	Improve transport connections	1
PUBLIC SPACES		3
	Introduce community gardens in public spaces	1
	Monitor the impact of freedom camping	1
	More cultural events/activities/promotion	1
GENERAL COMMENTS		1
	Address vacant properties/improve town appeal	1

Table 20: How could we better use land and public services in Kāpiti?

Selected Responses

"Better controls on forestry slash to keep it out of our waterways + beaches."

How could we better use land and public spaces in Kāpiti?

15.2 What else could Council do to enable our community to grow and flourish?

Respondents were asked what else the council could do to further enable the Kāpiti community to flourish. Table 21 details their suggestions.

Overview of responses

Networks & connectivity — Respondents express the opinion that fancy cycleways only benefit a few individuals, highlighting the need for infrastructure improvements that cater to growing housing demand. They also mention the absence of toilets on nature walks, suggesting the implementation of compostable toilets. Additionally, improving cycleway connections and introducing more Locky Docks in communities are suggested for better transportation options.

Housing — Respondents emphasise the need for more leniency in regulations regarding building and converting properties, as the current processes are costly. They also propose implementing bylaws to prevent empty houses, suggesting utilising them for other purposes. Lastly, they suggest exploring housing options specifically tailored for older individuals that do not necessarily involve retirement homes.

Theme	Subtheme	Frequency
NETWORKS & CONNECTIVITY		6
	Improve transport connections	2
	Build more public toilets at walking tracks	1
	Extend and maintain cycleways	1
	Increase the number of Locky Docks	1
	Lessen focus on cycleways	1
HOUSING		3
	Ensure empty houses are used	1
	Not enough accessible housing for elderly	1
	Promote intensification	1
INCOME & WORK		3
	Address vacant properties/improve town appeal	2
	Enhance tourism industry/new branding	1
LAND USE & QUALITY		3
	Fond of small-town character	2
	Promote intensification	1
GENERAL COMMENTS		1
	Not a core function of Council	1

Theme	Subtheme	Frequency
PEACE & SAFETY		1
	Improve safety in public areas	1
CONNECTIONS WITH OTHERS		1
	More recreational areas for various age groups	1
CLIMATE & CHANGE		1
	Concern regarding increasing floods/preparedness	1
EDUCATION & TRAINING		1
	More educational courses/facilities	1
PUBLIC SPACES		1
	Introduce community gardens in public spaces	1

Table 21: What else could Council do to enable our community to grow and flourish?

16 Pūngao | Energy

16.1 Do you have concerns about access to affordable, sustainable energy in our District?

Respondents were asked to suggest concerns they may have about sustainable and affordable energy in Kāpiti. Their responses are summarised in Table 22.

Overview of responses

General comments — Respondents mentioned the need to address water leaks and manage the impact of sea levels and climate change. They also suggested considering the use of solar PV to power more Council infrastructure to increase resilience and minimise energy costs.

Affordability — Respondents mentioned that the increasing cost of petrol and gas is causing financial difficulties for families, resulting in some people being unable to attend school. They express concern that access to affordable renewable energy is limited to those who can afford it, while those who are struggling financially have no options available to them. They suggest measures such as subsidies for solar panel installation and a rebate scheme to encourage the use of renewable energy.

Theme	Subtheme	Frequency
GENERAL COMMENTS		3
	Adopting solar PV for KCDC infrastructure	2
	Focus on core Council functions	1

Theme	Subtheme	Frequency
AFFORDABILITY		3
	Implement rebate/subsidy scheme	3
ACCESSIBILITY		1
	Increase access to EV chargers	1

Table 22: Do you have concerns about access to affordable, sustainable energy in our District?

16.2 What else could Council do to support access to energy?

Respondents were asked what else the Council could do to further support energy access. Table 23 details their responses.

Overview of responses

Accessibility support — Respondents are advocating for increased EV charging stations, facilitating micro-grids for solar generation, and encouraging the use of solar panels and windmills on new building projects.

Theme	Subtheme	Frequency
ACCESSIBILITY SUPPORT		4
	Increase solar energy support	4

Table 23: What else could Council do to support access to energy?

Selected Responses

"Facilitating micro-grids for solar generation."

What else could Council do to support access to energy?

17 Kai | Food

17.1 Do you have concerns about food supply or production in our District?

Respondents were asked to describe any concerns they may have with regards to food supply or production in Kāpiti. Table 24 summarises these concerns.

Overview of responses

Production — Respondents emphasise the need to preserve productive soil and express concerns about the loss of good quality land for housing development.

Theme	Subtheme	Frequency
PRODUCTION		3
	Concern regarding development on arable land	3
SUPPLY		1
	Concern regarding difficult access to healthy food	1

Table 24: Do you have concerns about food supply or production in our District?

17.2 What else could Council do to support safe and sustainable food supply, production, and sale?

Respondents were asked to suggest ways in which the Council could support safe and sustainable food supply, production, and sale. Table 25 details these suggestions.

Overview of responses

Production & supply — Respondents express support for the establishment of community gardens and suggest utilising underutilised spaces for growing food. They also emphasise the need to support local growers and marketers by streamlining consent processes. Some respondents mention the need to improve care for Mahara Gardens and call for more food gardens in urban areas and town centres. Collaboration and community sharing initiatives are also suggested, such as crop swaps and developing allotments for growing vegetables and fruits.

Theme	Subtheme	Frequency
PRODUCTION & SUPPLY		4
	Support garden production in community/urban areas	4
SALE		2

Theme	Subtheme	Frequency
	Introduce local competition against supermarkets	1
	Simplify/make cheaper consent process for stalls	1
GENERAL COMMENTS		1
	Not a core function of Council	1

Table 25: What else could Council do to support safe and sustainable food supply, production and sale?

Selected Responses

"Support establishment of community gardens. Allow usage of underutilised berms/roadside verges for growing food for shared use as in Melbourne."

What else could Council do to support safe and sustainable food supply, production, and sale?

Phase Two: Testing what we have heard so far

18 Vision follow up survey

This section of the report summarises community feedback received as part of the Vision follow up survey. The community was provided with a summary of the feedback received from the initial engagement for reflection and refining.

18.1 Does this reflect what's important to you?

Respondents were asked whether the feedback received reflected what was important to them. Table 26 is a summary of the feedback received.

Overview of responses

Connections with others — Respondents express a mixed sentiment towards the topic of connections with others. Positive aspects highlighted include the sense of community, access to activities, and the beauty of the environment. However, there are also concerns raised about affordability, gentrification, and the need for better facilities and services for young people, special needs individuals, and the wider community. Some respondents express a desire to keep the charm and unique character intact.

Networks & connectivity — Respondents are mostly in agreement about the need for better bus connections in Peka Peka and Te Horo and express frustration over the lack of public transport options. They also express a desire for improved walking and cycling paths. Some specific suggestions include extending the Waikanae River walkway, adding a railway station in Te Horo, and implementing traffic lights and pedestrian crossings in various locations.

Community partnership — Respondents have mixed opinions about community partnership. Some feel that the Council should focus on addressing the cost of living crisis and providing core services, while others appreciate the Council's efforts and want more opportunities for participation. Some respondents' express concerns about spending, lack of transparency, and the Council's handling of projects. Some respondents also mention the importance of preserving the environment and involving the Māori community.

Theme	Subtheme	Frequency
CONNECTIONS WITH OTHERS		155
	General agreement without specifics	68

Theme	Subtheme	Frequency
	Development of culture/history of the area	11
	Development of youth-focused activities/facilities	11
	Improve access to/upgrade public facilities	11
	General disagreement without specifics	9
	Facilities for different age groups	7
	Support for community sports/outdoor activities	6
	Preserving village/community atmosphere	5
	Support for community events and activities	5
	Support for library in Paekākāriki	5
	Improve access to natural/public spaces	4
	Integration of Māori culture/identity	4
	Image of Paekākāriki as gateway to Kāpiti	3
	Rejuvenation/development of existing areas	3
	Support for the arts/culture/media	3
NETWORKS & CONNECTIVITY		40
	Improve/expand cycling and walking paths	13
	Traffic management and road safety	13
	Improved public transport	7
	Improve roads	4
	Improve parking	3
COMMUNITY PARTNERSHIP		26
	Criticism of consultation process	10
	Concern about Council spending and debt	7
	Community involvement in decision-making	6
	Concern about neglected regions in report	3
BIODIVERSITY		19
	Tree planting and green space preservation	9
	Protection of wildlife/natural spaces/waterways	5
	Removal of non-native species/pests	5
RIVER/OCEAN HEALTH		13
	Concern about coastal erosion	5
	Improvements to waste management	5
	Improvements to stormwater systems	3
HOUSING		12
	Support for affordable/more housing	9
	Concern about housing regulations	3
OTHER		10

Theme	Subtheme	Frequency
	Concern about rates increases	10
HEALTH		8
	Improved access to healthcare facilities	5
	Desire for local hospital/emergency services	3
INCOME & WORK		7
	Support for tourism industry	4
	Desire for more diverse shopping options	3
LAND USE & QUALITY		7
	Address land restitution claim of Miriona Budge	2
	Balancing development with character preservation	2
	Concern about aesthetic of new developments	1
	Concern about relocations	1
	Support for restrictions to beachfront development	1
PEACE & SAFETY		4
	Maintaining safe community spaces	2
	Concern about potential increased crime	1
	Improving intra-community relationships	1
CLIMATE & CHANGE		3
	Focus on climate change mitigation	3
EDUCATION & TRAINING		3
	Support for new primary schools	3
WATER		2
	Concern about water quality and supply	2
FOOD		2
	Support for food fairs/festivals	2
EQUALITY		1
	Desire for improved diversity	1
ENERGY		1
	Support for renewable energy	1

Table 26: Does this reflect what's important to you?

18.2 Is there anything missing?

Respondents were asked whether there is anything missing.

Theme	Subtheme	Frequency
CONNECTIONS WITH OTHERS		105
	Indoor sports and recreational facilities	18
	Fenced in dog parks needed	17
	Outdoor sports and recreational facilities	15
	Cultural and arts facilities and events	10
	Support for Māori culture and heritage	8
	Youth-focused activities and facilities	8
	A community owned hall	7
	Increase the number of lifeguards	6
	Increase the number of marae	6
	Increased regulation and monitoring of dogs	6
	Accessibility improvements for disabled and elderly	4
NETWORKS & CONNECTIVITY		59
	Improve road safety and use with increased cars	13
	Improved waste management and recycling	11
	Enhanced public transport services	9
	Extend cycleways/walkways	7
	Increase parking lots	5
	Extend and maintain footpaths	4
	Improved road infrastructure and connectivity	4
	Invest in E-scooter service	3
	Public transport services needed in Te Horo	3
BIODIVERSITY		37
	Focus on environmental conservation	20
	More green spaces and parks	9
	Pest control and management	8
COMMUNITY PARTNERSHIP		32
	Concern about Council spending and rates increases	17
	Focus on core Council services	5
	Improve Council governance	4
	Include the Wainuiwhenua Project in the vision	3
	Requests for more community input in decision-making	3
HOUSING		24
	Maintain affordable rates	13
	Build more retirement homes	6

Theme	Subtheme	Frequency
	Increased housing density and options	5
CLIMATE & CHANGE		19
	Focus on climate change mitigation and adaptation	14
	Sustainable energy initiatives	5
INCOME & WORK		16
	Address vacant properties/improve town appeal	7
	Support for local businesses and economy	5
	Tourism development initiatives	4
HEALTH		15
	Improved healthcare facilities and services	15
LAND USE & QUALITY		12
	Concerns about urban development impacts	5
	Preservation of local character and heritage	4
	Address land restitution claim of Miriona Budge	3
FOOD		12
	Encourage investment in local shopping and dining	12
RIVER/OCEAN HEALTH		11
	Maintain stormwater and wastewater systems	7
	Improve septic tank system	4
PEACE & SAFETY		10
	Enhanced community safety measures	7
	Address crime in the community	3
WATER		9
	Improved water management and quality	5
	Increase the number of water fountains	4
EDUCATION & TRAINING		8
	New schools/childhood centres	5
	Upgrade school playground	3
OTHER		1
	Suggestions for specific local projects	1

Table 27: Is there anything missing?

Selected Responses

"Maintaining & improving safe cycle connections through the village. One can go from Porirua to Ōtaki off road except for Paekākāriki. The sea wall will eventually have a cycle way along it but something like a village wide speed reduction to 40km would help. Also, stronger links with Whareroa Farm Reserve.- via Workshop Session."

Is there anything missing?

provides an overview of what respondents feel is missing.

Overview of responses

Connections with others — Respondents expressed the need for various improvements and facilities related to connections with others. Some of the important aspects highlighted include the need for a community centre and recreational venues, such as a music venue and indoor sports complex, to foster community cohesion and provide entertainment options. There is also a demand for dog parks and better management of dog control to ensure safety for all users of recreational areas. Overall, the responses indicate a desire for more inclusive and accessible spaces that promote interaction and support the diverse needs of the community.

Networks & connectivity — Respondents highlight the need for improved public transport services, including more buses and clearer information about services, to reduce reliance on cars. They also emphasise the urgent need for transportation connections to connect different areas, such as Te Horo Beach with Paraparaumu and Kāpiti College. They also highlight the issue of speeding on residential streets and the need for traffic calming measures, such as slower speed zones. They also mention the importance of improving bike lane connections and pedestrian crossings. Additionally, there is concern about the need for improved waste management and recycling in the area.

Biodiversity — Respondents emphasise the importance of protecting the environment and increasing biodiversity. They suggest measures such as planting indigenous species, implementing predator control, and protecting mature trees. They also call for more pest control to address rabbit populations and expressed the need for more green spaces and parks, including grass areas for insects and birdlife.

Theme	Subtheme	Frequency
CONNECTIONS WITH OTHERS		105
	Indoor sports and recreational facilities	18
	Fenced in dog parks needed	17

Theme	Subtheme	Frequency
	Outdoor sports and recreational facilities	15
	Cultural and arts facilities and events	10
	Support for Māori culture and heritage	8
	Youth-focused activities and facilities	8
	A community owned hall	7
	Increase the number of lifeguards	6
	Increase the number of marae	6
	Increased regulation and monitoring of dogs	6
	Accessibility improvements for disabled and elderly	4
NETWORKS & CONNECTIVITY		59
	Improve road safety and use with increased cars	13
	Improved waste management and recycling	11
	Enhanced public transport services	9
	Extend cycleways/walkways	7
	Increase parking lots	5
	Extend and maintain footpaths	4
	Improved road infrastructure and connectivity	4
	Invest in E-scooter service	3
	Public transport services needed in Te Horo	3
BIODIVERSITY		37
	Focus on environmental conservation	20
	More green spaces and parks	9
	Pest control and management	8
COMMUNITY PARTNERSHIP		32
	Concern about Council spending and rates increases	17
	Focus on core Council services	5
	Improve Council governance	4
	Include the Wainuiwhenua Project in the vision	3
	Requests for more community input in decision-making	3
HOUSING		24
	Maintain affordable rates	13
	Build more retirement homes	6
	Increased housing density and options	5
CLIMATE & CHANGE		19
	Focus on climate change mitigation and adaptation	14

Theme	Subtheme	Frequency
	Sustainable energy initiatives	5
INCOME & WORK		16
	Address vacant properties/improve town appeal	7
	Support for local businesses and economy	5
	Tourism development initiatives	4
HEALTH		15
	Improved healthcare facilities and services	15
LAND USE & QUALITY		12
	Concerns about urban development impacts	5
	Preservation of local character and heritage	4
	Address land restitution claim of Miriona Budge	3
FOOD		12
	Encourage investment in local shopping and dining	12
RIVER/OCEAN HEALTH		11
	Maintain stormwater and wastewater systems	7
	Improve septic tank system	4
PEACE & SAFETY		10
	Enhanced community safety measures	7
	Address crime in the community	3
WATER		9
	Improved water management and quality	5
	Increase the number of water fountains	4
EDUCATION & TRAINING		8
	New schools/childhood centres	5
	Upgrade school playground	3
OTHER		1
	Suggestions for specific local projects	1

Table 27: Is there anything missing?

Selected Responses

"Maintaining & improving safe cycle connections through the village. One can go from Porirua to Ōtaki off road except for Paekākāriki. The sea wall will eventually have a cycle way along it but something like a village wide speed reduction to 40km would help. Also, stronger links with Whareroa Farm Reserve.- via Workshop Session."

Is there anything missing?

19 Ki te Āpōpō Rangatahi

Feedback was gathered at the Kāpiti Coast District Council table at the Ki te Āpōpō Rangatahi Expo on 21 June 2024. The aim was to understand the views of rangatahi to help shape Vision Kāpiti. The efforts resulted in 49 responses with 52 feedback points.

19.1 What's your wish for Kāpiti?

Respondents were asked what their wish for Kāpiti was. Table 28 summarises these wishes.

Overview of responses

Connections with others — Respondents express a desire for more Māori people to embrace their culture, with a focus on increasing the use of the Māori language. They also mention a need for more activities and places to go, especially during rainy days. There is a positive sentiment towards embracing diversity and different cultures, as well as compassion for others.

Income & work — Respondents express a desire for more opportunities, growth, and options related to income and work. They hope for increased support for rangatahi and aspirations to see personal channels grow. Additionally, they emphasise the importance of creating equal opportunities for all cultures and reducing societal tendencies towards tall poppy syndrome.

Food — Respondents suggest assistance for people in need of food and housing, highlighting the importance of helping those who are vulnerable. The respondents also mention the provision of free food and the need for increased food supply in homeless shelters.

Theme	Subtheme	Frequency
CONNECTIONS WITH OTHERS		23
	Dedicated spaces for rangatahi to socialise	5

Theme	Subtheme	Frequency
	More rangatahi focused events and activities	5
	More Te Reo Māori usage	4
	Embracing Māori culture	3
	Indoor activities for rangatahi on rainy days	3
	More diversity and inclusivity	3
INCOME & WORK		5
	More opportunities for rangatahi	5
FOOD		5
	More food assistance for those in need	5
PEACE & SAFETY		4
	Address and reduce violence in the community	2
	Maintaining safe community spaces for rangatahi	2
NETWORKS & CONNECTIVITY		3
	Restore Khandallah Pool	3
COMMUNITY PARTNERSHIP		2
	Social support for vulnerable community members	2
HEALTH		2
	Better access to mental health services for youth	1
	Reduction of drug use in teens	1
HOUSING		2
	Support for affordable/more housing	2
WATER		1
	Increase the number of water fountains	1
RIVER/OCEAN HEALTH		1
	Restore Lake Horowhenua	1

Table 28: What's your wish for Kāpiti?

Selected Responses

"More expo's like this for rangatahi <3."

What's your wish for Kāpiti?

"More Te Reo around Kapiti/Horowhenua."

What's your wish for Kāpiti?

"To have a safe space for rangatahi everywhere!! Thank you :)."

What's your wish for Kāpiti?

Broader community engagement

In addition to the targeted Vision Kāpiti surveys and workshops, several other community engagement initiatives have provided valuable insights into the priorities, concerns, and aspirations of Kāpiti Coast residents. These broader engagement efforts have captured a wide range of perspectives on various aspects of community life, from long term planning to specific local projects.

The following sections summarise key findings from:

- The Long Term Plan 2024-2034 consultation process
- The Waikanae Library consultation
- Needs Assessment: Insights from Kāpiti young people
- Te Newhanga Kāpiti Community Centre social and community needs assessment
- Takutai Kāpiti coastal adaptation engagement
- Paekākāriki: What Next? Project
- Friends of Te Horo Beach: Participatory Mapping Activity
- Social and Community Sector Vision Workshop

These additional sources of community feedback complement and enrich the Vision Kāpiti engagement, offering a more comprehensive understanding of the community's vision for its future. By considering these diverse inputs, we can ensure that the Vision Kāpiti reflects a broad spectrum of community voices and addresses both immediate concerns and long-term aspirations.

The insights gathered from these broader engagement initiatives align with and expand upon many of the themes identified in the Vision Kāpiti process, providing a robust foundation for future planning and decision-making in the District.

20 Long Term Plan 2024–34

This section of the report provides an overview of the public consultation process for the Kāpiti Coast District Council's Long Term Plan 2024-34. The consultation presented key challenges and proposals for the District, including funding for water services, debt reduction, housing for older people, and a new climate action rate.

Data was collected through three methods:

- Written submissions: Received from community members.
- Online input: Gathered through digital platforms.
- In-person presentations: Conducted with local residents.

The combined efforts yielded 371 submissions with 1598 feedback points during the consultation period, providing valuable insights into residents' preferences and concerns about the proposed changes. Feedback from these submissions is summarised here.

20.1 What is your preferred option for how the Council fund the increased cost of three waters services?

Respondents were presented with two options for how the Council could fund the increased cost of three waters services. These were:

- **Option 1 (Council's preferred option):** Rates fund the \$4.7 million operating cost shortfall for three waters services in 2024/25.
- **Option 2:** Debt fund the \$4.7 million operating cost shortfall in 2024/25.

Most respondents (**60.3% support**) chose **Option 1** as their preferred option.

"Rates are the best option to recover the extra cost but there should be consideration for pulling levers outside of land/property-based rates. KCDC is one of the few councils in the region that has water meters so we should be using targeted increases to these charges for ongoing maintenance related to water assets especially potable and wastewater that is charged on a volumetric rate. I also question the ability of the Council to deliver large scale projects in the water space after spending much of 2021 involved in the preplanning of the Waikanae WTP upgrades and then project only starting 18-24 months later over which time costs would have gone through the roof."

What is your preferred option for how the council fund the increased cost of three waters services?

Option 1 Fund \$4.7 million shortfall with an additional 5% rates increase in Year 1

Option 2 Fund \$4.7 million shortfall by taking on debt each year

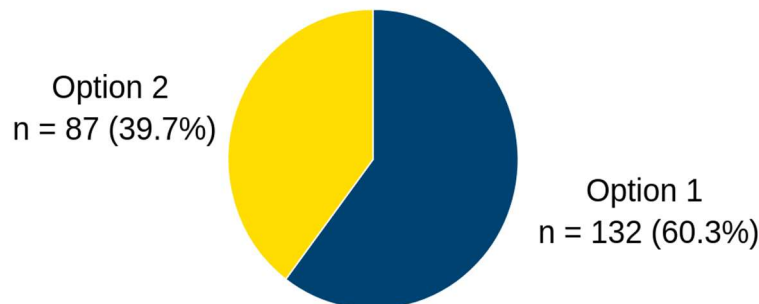


Figure 1: What is your preferred option for how we fund the three waters services?

Reasons for choosing Option 1:

- Inability to afford debt
- Preference for rates funding
- Ensuring intergenerational equity.

Additional concerns:

- Ability to manage three waters
- Need for rates remission/assistance
- Clarity on rate increases.

Alternative options proposed:

- Reduce overall Council expenditure
- Targeted funding through water usage/metering
- Focusing on core services.

"Households are already under extreme pressure due to rising costs across the board, they cannot afford to fund this shortfall through rates."

"We need to pay our share even when times are tough. It's unfair to dump on our future selves or future communities."

What is your preferred option for how the Council funds the increased cost of three water services?

20.2 What is your preferred option for rate increases to reduce Council debt?

Respondents were presented with three options for rate increases to reduce Council debt. These were:

- **Option 1:** Apply average rates increases of 8% per year from 2025/26 to 2033/34 to build a resilient future and reduce debt.
- **Option 2 (Council’s preferred option):** Apply average rates increases of 7% per year from 2025/26 to 2033/34 to build a resilient future and reduce debt.
- **Option 3:** Apply average rates increases of 6% per year from 2025/26 to 2033/34 to build a resilient future and reduce debt.

Most respondents (**52.3% support**) chose **Option 3** as their preferred option.

Option 1	Apply average rates increases of 8% per year from 2025/26 to 2033/34
Option 2	Apply average rates increases of 7% per year from 2025/26 to 2033/34
Option 3	Apply average rates increases of 6% per year from 2025/26 to 2033/34

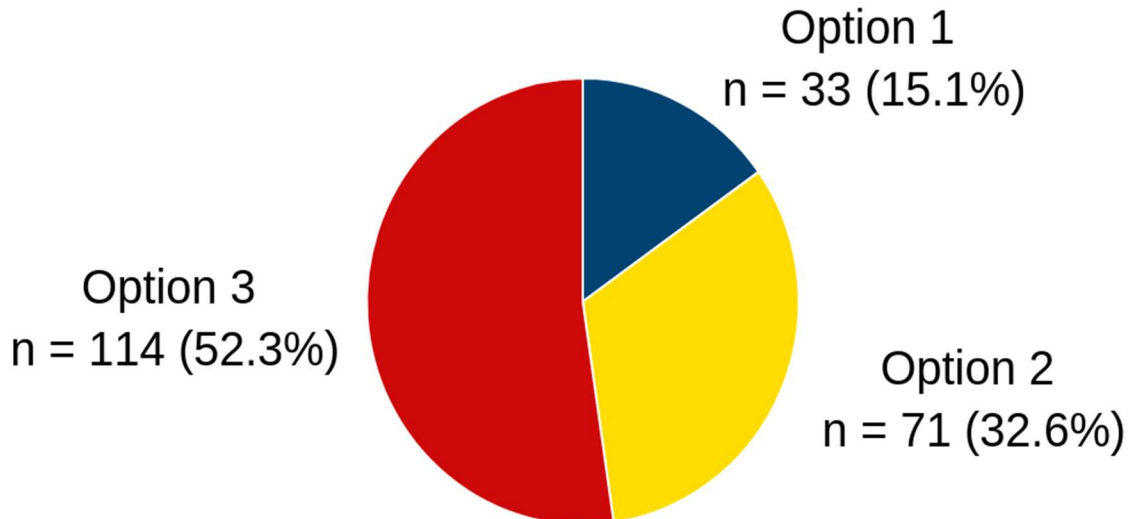


Figure 2: What is your preferred option for rate increase to reduce Council debt?

Reasons for choosing Option 3:

- Residents cannot afford rates increases
- Allows for debt reduction over reasonable period

- Increasing rates would deter future residents.

Alternative options proposed:

- Prefer Council reduce overall expenditure
- Prefer Council focus on core services only
- Prefer Council seek alternative means of funding.

Additional concerns:

- Rates increase should match inflation
- Funding shortfalls are a result of poor planning.

Selected Responses

"I don't like this, but it's going to be important to have access to debt in the future. The less debt that exists, the easier (and cheaper) future borrowing will be."

What is your preferred option for rate increase to reduce Council debt?

"Whilst balancing budgets is a laudable aim, front loading rate increases is a poor option. With Kāpiti now being appealing as a commuter town to Wellington ramping up rates may discourage further local migration to this area, aiming to make Kāpiti an appealing place to live and work, would grow the rate payer base and be a better long-term source of revenue."

What is your preferred option for rate increase to reduce Council debt?

"I disagree with all options. Any increases should be limited to rate of inflation, Council should operate within their means, not further burden ratepayers."

What is your preferred option for rate increase to reduce Council debt?

"I agree that Council debt levels are high and need to be reduced. The proposal is a well-balanced response."

What is your preferred option for rate increase to reduce Council debt?

"We're a coastal community with people who are struggling. We must invest in our communities and yes, that means paying into our collective coffers - that's what Council is for."

What is your preferred option for rate increase to reduce Council debt?

20.3 What is your preferred option for how we manage Council housing for older people?

Respondents were presented with three options for how to manage council housing. These were:

Option 1 (Council's preferred option): Transfer Council's older persons' housing assets to a new community housing provider.

Option 2: Older persons' housing is delivered by an existing community housing provider with less influence from Council.

Option 3: Older persons' housing continues to be delivered by Council with no option to grow the portfolio.

Most respondents (**59.7% support**) chose **Option 1** as their preferred option.

**Option
1**

Transfer our older persons' housing assets to a new community housing provider.

**Option
2**

Older persons' housing is delivered by an existing community housing provider with less influence from Council.

**Option
3**

Older persons' housing continues to be delivered by Council with no option to grow the portfolio.

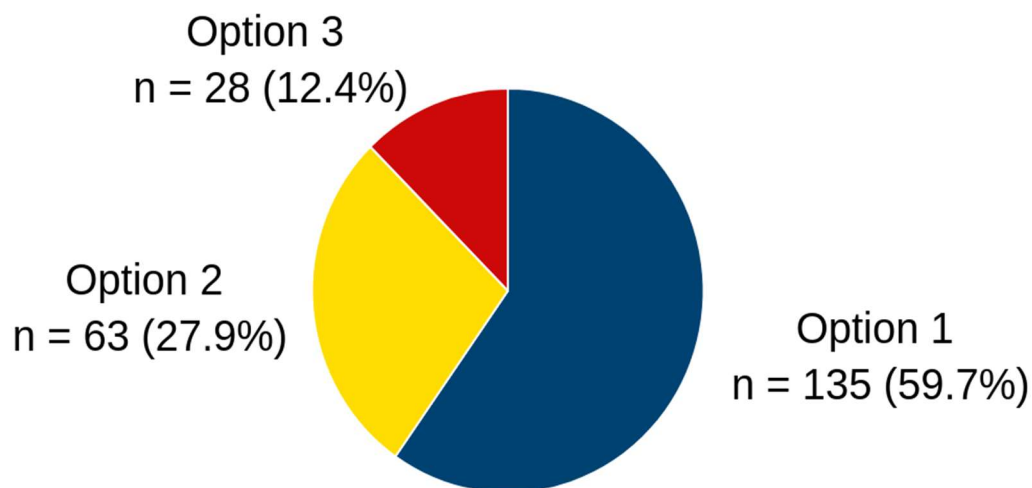


Figure 3: What is your preferred option for the way Council manages Council housing for older people?

Main reasons for supporting Option 1 were:

- Housing should not be managed by Council
- Support continued Council influence
- CHPs have expertise in housing management.

Alternative options proposed:

- Responsibility for older persons housing belongs to central government
- Prefer properties be sold to fund debt
- Finance through the sale of some houses.

Additional concerns:

- Scope of housing should extend beyond elderly
- Concern regarding changes to central funding.

Selected Responses

"Community Housing Provider - the only way for growth! This is vital that we grow the availability of (older people and/or disability) housing options - the waiting list in the future will only get bigger if we fail to get this right."

What is your preferred option for how we manage Council housing for older people?

"Whilst offloading property assets is generally a bad idea, if it includes transfer of liabilities and costs of providing housing for older persons with the possibility of increased funding from other government sources then this seems sensible."

What is your preferred option for how we manage Council housing for older people?

"Council employs people to manage the housing community. Do not outsource. It will be unattainable."

What is your preferred option for how we manage Council housing for older people?

"Don't think this is the Council's remit and rather should be focus central government. What about housing for young families with kids who have lower home ownership rates plus dependents. Council should instead zone lots of land for construction of mixed use residential including units for elderly and flood market with supply to improve affordability."

What is your preferred option for how we manage Council housing for older people?

20.4 What is your preferred option for how the Council funds climate-related activities?

Respondents were presented with two options for Council should fund climate related activities. These were:

- **Option 1 (Council's preferred option):** Introduce a new climate action rate based on a property's capital value rather than the current land-value based general rate.
- **Option 2:** Make no changes to how Council allocates funding for climate change activities.

Most respondents chose Option 2 (**57.3% support**) as their preferred option.

**Option
1**

Introduce a new targeted climate action rate based on a property's capital value rather than the current land-value based general rate.

**Option
2**

Make no change to how we allocate funding our climate change activities.

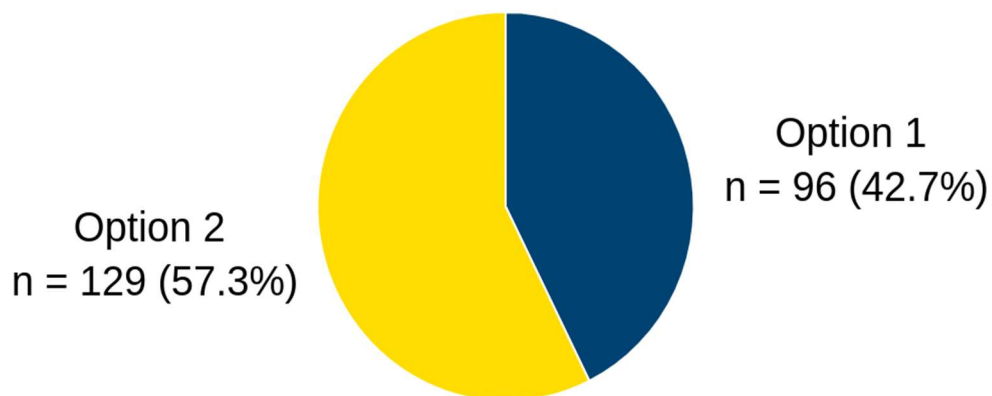


Figure 4: Should the Council introduce a new climate action rate?

Main reasons for supporting Option 2 were:

- Climate change is business as usual/no separation needed
- Opposed to rating based on property value
- Residents cannot afford rates increase.

Alternative options proposed:

- Climate change is not a concern/no rates needed
- Prefer Council reduce overall expenditure
- Climate change is not a core function of Council.

Additional concerns

- Concern proposal is means to increase future rates
- Concern with ability to manage climate change.

Selected Responses

"Many land owners who are at risk from climate issues have made significant capital gains on their investments because of their location which there property is located this making it fairer to charge them for their ongoing protection."

What is your preferred option for how the Council funds climate-related activities?

"Dealing with climate change IS business as usual. Nearly every aspect of Council operations is affected directly or indirectly. No need to add to the bureaucracy by adding a new rate. Unimproved properties should still pay their share, it affects them too."

What is your preferred option for how the Council funds climate-related activities?

"Managing climate change is just another cost that needs to be covered by rates. Having separate rating structures creates complexity, complexity adds cost. Council can report the spending in the accounts."

What is your preferred option for how the Council funds climate-related activities?

"If changing our climate change policy is going to cost more in rates, don't change it - we can't afford the rates as it is!"

What is your preferred option for how the Council funds climate-related activities?

"A capital-value based rate for climate action better reflects the value of the assets being protected, so should better align the incidence of costs and benefits. I'm not convinced by the transparency argument as clarity on what rates are spent on can be achieved in other ways, without changing how rates are calculated."

What is your preferred option for how the Council funds climate-related activities?

20.5 Public feedback on updated Council policies

Council has reviewed and updated several key policies. The feedback received in relation to each of these policies is outlined below.

Revenue Policy:

Respondents oppose rate increases due to cost of living pressures. They want the Council to reduce costs, focus on essential services, and increase transparency in spending and staffing.

Development & Contributions:

Respondents want development contributions to fully cover infrastructure costs, object to using public money for private businesses, and call for more transparency and consideration of impacts on existing areas.

Significance & Engagement:

Respondents demand better communication from the Council, more community consultation, public voting on significant decisions, greater developer responsibility for infrastructure costs, and increased Council accountability.

Rates Remission:

Respondents suggest more concessions for older residents, increased deductions, and delayed reimbursement for rates relief.

Selected Responses

"Development contributions, it is important that all developments pay something towards the impact on our infrastructure. Consultation with the community is very important and should not decrease."

Public feedback on updated Council policies

"Significance and engagement. If something directly affects a ratepayers property, the Council should notify them. For example, LIM report alterations. Very disappointed by the Council's actions and lack of transparency."

Public feedback on updated Council policies

"I am impressed by the scope of the Rates Remission draft and urge it to be adopted as is. Please keep up the engagement - Everything Kāpiti is a great thing on the go already!"

Public feedback on updated Council policies

20.6 Council fees, Alcohol Licensing Fees Bylaw, and democratic processes

Through the Long Term Plan process Council also sought public feedback on fees and charges, a proposed Alcohol Licensing Fees Bylaw and how democracy could be enhanced. Below is a summary of the feedback received on these topics.

Alcohol Licensing:

Respondents support shifting alcohol licensing costs from ratepayers to licensees. They call for simplifying the licensing process, implementing a nuanced fee structure based on business size and nature, and increasing fees to address alcohol-related social harms. There's also a desire for more community input in alcohol licensing decisions.

Fees & Charges:

Opinions on fees and charges vary, with some supporting increases and others advocating for reductions. Respondents want more transparency in fee structures and support user-pays systems. There's opposition to specific fee increases and concerns about fairness. Many emphasise the importance of keeping community hall fees accessible.

Enhancing democracy:

Respondents criticised the council for undemocratic practices, such as ignoring public votes and implementing policies without proper consultation. They call for increased transparency, better consultation processes, and reducing staff who don't support democratic changes.

Selected Responses

"Please do the enhancing democracy! It would be wonderful to have more sessions and activity outside of work hours. Especially for people who commute to Wellington for work."

Council fees, Alcohol Licensing Fees Bylaw, and democratic processes

"If you want responsible owners and managers of stores and licences premises, make it cheap and easy for them to do the right thing and comply and fine them loads if they do not comply."

Council fees, Alcohol Licensing Fees Bylaw, and democratic processes

"I am fan of user pays for contributing to the costs of many 'premium' assets and services. I don't mind the graduated scales that help those in the community with the least resources. I expect financial penalties for poor form by a person to exceed the cost of policing that poor form so there is an incentive to perform better. Alcohol licensing should be cost neutral; rate payers should NOT subsidise this business sector. Property development related fees etc should exceed the costs for providing the service - this is a profit pursuing sector. Once land is re-zoned for the more profitable use by developers' Council should introduce higher fees for them not starting with that development - bring financial benefits to the community if the developer doesn't deliver the property benefits."

Council fees, Alcohol Licensing Fees Bylaw, and democratic processes

20.7 Additional comments on the Long Term Plan

Respondents were asked if they had any additional comments they would like to make on the Long Term Plan (LTP).

Below is a summary of the most prevalent themes respondents mentioned.

Finances & Expenditure:

- Prefer Council reduce overall expenditure
- Residents cannot afford rates increase
- Council should prioritise debt reduction.

Performance & Policy:

- Prefer Council focus on core services only
- Concern regarding Council performance
- Concern regarding evidence for debt reduction.

Communities & Services:

- Council should prioritise support for community initiatives
- Improve safety as well as extend of footpaths
- Improve accessibility of public amenities.

Selected Responses

"I believe coastal communities should pay an enhanced contribution towards costs that directly protect them – for example, sea walls and Waimeha Stream mouth redirection. There is no need for a climate action rate – this is just playing with figures."

Additional comments on the LTP

"I believe Council should go back to basics. In my opinion some of the grants and activities we fund are 'nice to have' but unnecessary spending. we need to reduce costs as people are really struggling."

Additional comments on the LTP

"The majority of ratepayers cannot afford increases beyond CPI. I see no options to lower the level of services for instance what analysis has been done for Libraries to be opened 5 days a week, surely 2 days would be sufficient, reduce the open hours of the swimming pools etc. Commitment from KCDC that they will never again implement under the table decisions to use ratepayers money to support private businesses - \$1.3million to Air Chathams without any consultation - This is a disgrace."

Additional comments on the LTP

21 Waikanae Library

The Waikanae Library consultation process was a comprehensive six-week engagement initiative that ran from June 12 to July 22, 2023.

Data was collected through multiple methods:

- Community engagement hub: Open six days a week.
- Online engagement platforms: Facilitated digital participation.
- Local market stands: Provided in-person interaction.
- Targeted outreach: Focused on schools and community groups.
- Surveys and voting activities: Gathered structured feedback.
- Written feedback collection: Allowed for open-ended responses.

Promotion efforts included:

- Local media coverage

- Social media campaigns
- Posters and bookmarks distribution.

The combined efforts yielded:

- Over 437 completed feedback forms and surveys
- More than 3,000 individual comments.

This section of the report will present a summary of the key findings from the consultation.

21.1 Current Use

Community members were asked how they currently use the Library. The top three main uses for the Library were:

- Borrowing books
- Accessing Council services and information
- Reading and leisure.

Selected Responses

"Rates & other queries essential for those unable to travel to Paraparaumu easily."

How do you currently use the Library?

"Hard copy books, chat to librarians to get book recommendations, take part in workshops offering e.g. computer expert session, seed swap etc."

How do you currently use the Library?

21.2 What is your preferred option for location of the new library?

Respondents were presented with three options for the location of the new Library.

These were:

- **Option 1:** Refurbish and extend the former Library
- **Option 2:** Refurbish both former and pop-up Library buildings
- **Option 3:** Refurbish both buildings and extend former Library.

Most respondents (**50% support**) chose **Option 1** as their preferred option.

Feedback on Option 1 included:

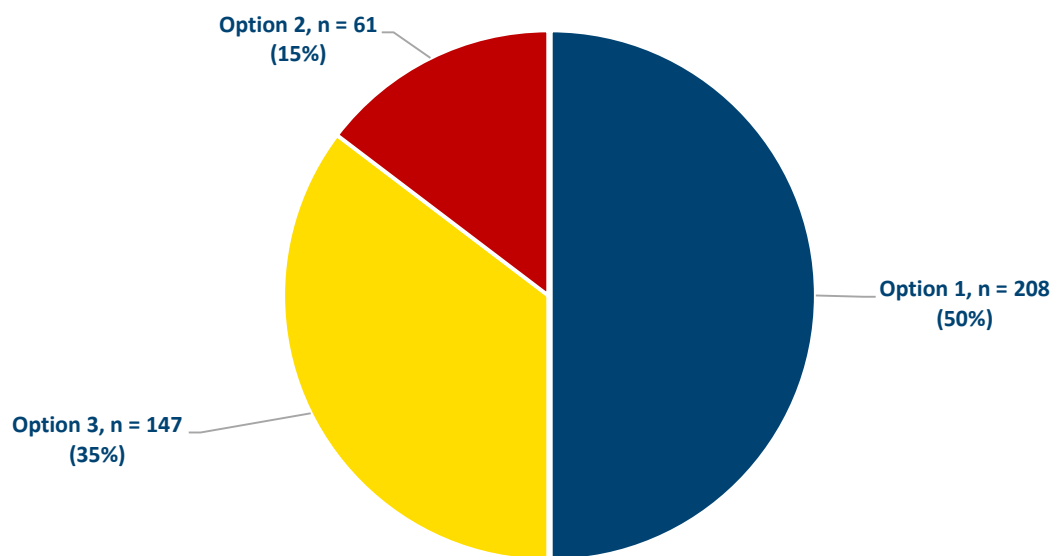


Figure 5: What is your option for location of the new Library?

Reasons for choosing Option 1:

- Cost-effectiveness and affordability
- Minimal disruption to the community and Mahara Place
- No anticipated rate increases.

Additional concerns

- Long-term adequacy: Worries about the library's ability to meet future community needs
- Space constraints: Concerns about limited size and potential for future expansion
- Building quality: Some perceive it as a cold space with limited natural light.

Alternative options

- Utilising the existing Paraparaumu Library instead of expanding the Waikanae Library
- Creating a smaller library with mobile services
- Focusing on digital resources to reduce physical space needs.

Selected Responses

"Project objectives can be achieved in a smaller space. Lowest cost and most sustainable option. Reusing the old Library will revitalise Mahara Place while keeping the Library in scale without dominating the area."

What is your preferred option for location of the new Library?

"We need to keep costs down for ratepayers. We have a main Library in Paraparaumu; this should just be a small facility."

What is your preferred option for location of the new Library?

"We need to consider the long term. No point cheaping out and then immediately having to plan an upgrade! Option 1 will already be at capacity!"

What is your preferred option for location of the new Library?

"Waikanae needs a space that can grow with the community, while allowing the businesses in Mahara Place to recover from the current construction project. Option one minimises disruption, allows for later expansion as needed, and minimises the need for earthquake strengthening."

What is your preferred option for location of the new Library?

21.3 What are the most important aspects for Council to consider?

In the feedback form, community members were prompted to highlight what they believe to be the most crucial factors for the Council to consider when making the final decision. The analysis of responses to this query is detailed below.

- Creating a warm, welcoming, and inclusive space that serves as a multi-purpose community hub.
- Managing costs and evaluating financial impact to ensure fiscal responsibility and minimise rate increases.
- Future-proofing the facility to accommodate a growing population and evolving needs.
- Balancing traditional library services with new amenities, including spaces for learning, working, and community activities.
- Ensuring the Library is accessible and caters to all age groups, from children to seniors, reflecting the community's diverse needs.

21.4 Project Objectives

The Waikanae Library project objectives describe what the new facility aims to deliver for the community. These are:

- Support community connections
- Build healthy, resilient individuals and community
- Create a sense of place and belonging
- Provide opportunities for learning, working, and creating
- Support cultural identity and understanding
- Champion inclusivity
- Serve as an example of sustainable practices.

The community was given the opportunity to vote for their preferred objectives and give feedback regarding each objective. The most popular objectives were:

- Providing opportunities to learn, work, and create
- Supporting communities to connect
- Creating a sense of place and belonging.

The main themes mentioned by respondents relating to the objective of **providing opportunities to learn, work and create** were:

- The Library should have spaces for talks, classes, and the creative arts.
- The Library should provide flexible spaces for studying, working, and meeting.
- The Library should give access to books, magazines, newspapers, and online resources.

Selected Responses

" Workspaces for students to study. Meeting room(s) for WEA and other community. Learning - ancestry, computer access to Web etc."

Feedback on "providing opportunities to learn, work and create"

"Would love language classes, painting classes - available afternoons, evenings dependent on who in community is ready to run them. Became hard when these stopped getting any funding years ago."

Feedback on "providing opportunities to learn, work and create"

The main themes mentioned by respondents relating to the objective of **supporting communities to connect** were:

- The Library should provide multi-purpose gathering and meeting spaces with technology. These spaces should be soundproof and private.
- The Library should have book clubs and events for adults and children.
- The Library should have children's spaces for playing and reading.

Selected Responses

"Space for a range of activities including social, educational, entertainment for all people in the community."

Feedback on "supporting communities to connect"

"Having 'spaces' that people can connect in, in a relaxed way e.g. in a 'coffee club'. Holding events /celebrations of different cultural description: e.g., Matariki, Diwali."

Feedback on "supporting communities to connect"

The main themes mentioned by respondents relating to the objective of **creating a sense of place and belonging** were:

- The Library should provide a warm and welcoming space.
- The Library should have gathering or social places for various different groups and activities
- The Library should be a space for diverse cultural and entertainment events

Selected Responses

"Welcoming, warm, aesthetically pleasing environment. Community noticeboards etc. Destination for attending things you can connect to."

Feedback on "creating a sense of place and belonging"

21.5 Other Comments

Additional comments were provided by respondents, which fall outside of the Council options and objectives provided. These are outlined as:

- Keeping it small due to Paraparaumu Library's proximity
- Various expansion ideas (additional floors, new facility, mobile services)
- Focusing on books and research rather than entertainment
- Collaborating with Mahara Gallery
- Centralising services in Paraparaumu
- Cost-effective alternatives like pop-up libraries or expanding Paraparaumu Library
- Refurbishing Mahara Gallery or expanding the existing library.

Selected Responses

"It's disappointing that demolishing the old building isn't an option. It's pretty gross. I know that the new Library will be refurbished, but it would be great to have something completely new in that space. Also, make sure you engage with your current librarians too, as librarians, not just members of the community. Most of them are pretty great and will have insights that library managers and the community won't have."

Additional comments

"What is it designed to do? How will it work? Too little information on what it is for in the brochure. Useful for elderly unable or unwilling to use technology."

Additional comments

"All of this is very positive, thank you."

Additional comments

22 Needs Assessment: Insights from Kāpiti young people

This section of the report presents a summary of the key insights gathered from the Needs Assessment: Insights from Kāpiti young people. The assessment focused on young people who are or have been involved in Zeal's core programmes, such as afternoon hangs, creative programmes, events, and college representatives. In particular, it sought to understand the experiences, challenges and suggestions of young people from Ōtaki and Paraparaumu, as well as the impact of Zeal on participants and its ability to address their concerns.

The Needs Assessment: Insights from Kāpiti young people collected data through two methods:

- Annual survey: Conducted over 12 months, with 74 participants.
- Follow-up survey: Completed by 20 respondents.

The combined efforts yielded feedback from 94 youth involved in Zeal's programmes, aiming to understand their experiences, challenges, and needs.

Key insights from the survey include:

- **Zeal's impact:** Zeal is valued as a safe, welcoming space for development and social connection. Popular activities include afternoon hangs, creative programmes, and events.
- **Challenges:** Mental health issues, school stress, and social concerns are primary challenges faced by Kāpiti youth.
- **Support needs:** There's a strong desire for mental health support, safe spaces, and listening ears. Some prefer Zeal to remain an escape rather than an intervention point.
- **Community connection:** Youth express a need for more opportunities to connect with peers, adults, and the wider community.
- **Skill development:** There's demand for diverse courses and activities that build practical skills for future employment.
- **Spaces & activities:** Youth want more dedicated spaces and activities designed specifically for teenagers, including outdoor and creative pursuits.
- **Transportation:** Improved transport options, especially for returning from events, are needed.
- **Stigma & awareness:** There's a need to address negative perceptions about youth spaces and increase awareness of available services.

- **Staff & support:** Zeal staff are viewed positively, with youth learning from interactions with them. There's a suggestion for more staff during busy times.
- **Broader changes:** Youth identified needs for systemic changes, including improvements in mental health services, education system, and societal attitudes towards young people.

Overall, the Needs Assessment highlights Zeal's positive impact while also pointing to areas for growth and improvement in youth services across Kāpiti. It underscores the importance of listening to youth voices in shaping services and policies that affect them.

"I would like Zeal to keep all the bad stuff separate from our time there, and make it feel like an escape rather than an intervention or things like that."

"More support for mental health, I think a room where you can talk it out privately with a staff member or your friend would be nice. For like any issues happening in your life. "

What support would you like to see from Zeal and your community with these challenges?

23 Te Newhanga Kāpiti Community Centre

This section of the report presents a summary of the key insights gathered from the social and community needs assessment for Te Newhanga Kāpiti Community Centre, focusing specifically on the perspectives and experiences of Kāpiti residents and community organisations. It summarises community survey feedback to gain an understanding of the importance of community spaces and the gaps in current facilities and services.

Data was collected through multiple methods:

- Desk research: Review of existing information.
- Interviews with Kāpiti Coast District Council staff: Across various departments.
- Community survey: Online participation.
- Intercept and in-depth interviews: With members of the Kāpiti community.
- Survey and interviews with social and community organisations.
- Workshop with Elected Representatives.
- Engagement with Te Ati Awa-ki—Whakarongotai: Workshop/hui and interviews.

The study focused on: Paraparaumu, Paraparaumu Beach, Raumati Beach, Raumati South, Waikanae, Waikanae Beach, Peka Peka and Paekākāriki.

Note: Ōtaki was excluded due to distance and lack of public transport access, but residents were not barred from participating in the community survey.

The combined efforts yielded:

- 615 community members participated in the online survey
- 58 intercept and in-depth interviews with community members
- 45 interviews with social and community organisations
- 25 social and community organisations provided feedback via a short online survey.

23.1 What are at least three things that you would like to see offered at a community facility or space?

Respondents were asked what things they would like to see offered at a community facility or space. **Error! Reference source not found.** details what respondents most wanted to see offered.

Overview of responses

Connections with others — Respondents mention the importance of community spaces that encourage connections with others, such as meeting areas, drop-in centres and coffee/tea facilities. They stressed the need for these meeting areas to be both affordable and of various sizes and types. They also highlight the need for facilities that cater to different groups, including children, teenagers, and the elderly. In addition, they emphasise the need for accessible spaces, such as those suitable for people with disabilities, and the desire for a variety of social events, classes, workshops, and counselling services to support the well-being of the community.

Education & training — Respondents mention the importance of community education and training programs, including classes, workshops, and presentations on various topics. They also emphasise the need for accessible facilities such as meeting spaces, internet access, and libraries. Additionally, they mention night classes and Te Reo Māori and other language classes as examples of the types of classes desired.

Health — Some respondents emphasised the need for counselling services, mental health support and health and wellbeing events. A few highlighted the desire for spaces specifically tailored to the needs of elderly individuals and those with disabilities. They also mentioned the importance of having space, both indoor and outdoor, for exercise classes.

Theme	Subtheme	Frequency
CONNECTIONS WITH OTHERS		805

Theme	Subtheme	Frequency
	Community events and social gatherings	80
	Meeting rooms/spaces of various sizes/types	79
	Kitchen facilities (including tea/coffee)	53
	Youth-focused activities	53
	Affordable/free bookable spaces	51
	Drop-in centre/social space	46
	Cultural activities and events	44
	Art and craft workshops	41
	Spaces for community organisations	38
	Children's play areas	33
	Indoor recreational activities	27
	Re-establish as community hub	23
	CAB/JP/legal advice	22
	Art exhibitions/spaces	21
	DIY/repair/sewing workshops	21
	Music and performance spaces	21
	Swapping (food/clothing/toys)	17
	After-school/school holiday activities	15
	Free activities/classes	14
	Indoor sports facilities	14
	Comfortable/relaxing/quiet spaces	12
	Audiovisual facilities/sound systems	9
	Outdoor recreational spaces	9
	Intergenerational activities	8
	IT help/advice	7
	Multi-use venue	7
	Public toilet/shower facilities	7
	Evening/weekend access	6
	Dog/pet-friendly	5
	Maintenance/repair of current infrastructure	5
	Storage spaces	5
	Family-friendly	4

Theme	Subtheme	Frequency
	Library services	4
	Special needs facilities/sensory spaces	4
EDUCATION & TRAINING		124
	Community education classes	63
	Adult education programs	26
	Language/Te Reo Māori classes	13
	Family support classes	10
	Business/financial education	9
	Health education	3
HEALTH		79
	Exercise/fitness classes	44
	Support services (counselling, advice)	21
	Health and wellness services	8
	Care/services for elderly/people w/ disabilities	6
COMMUNITY PARTNERSHIP		61
	Information centre/community resources	29
	Community/council meetings and feedback	18
	Community staff/volunteers	9
	Collaboration with government/NGOs	5
EQUALITY		42
	Inclusivity/accessibility for elderly/disabled	33
	Inclusivity/accessibility for all genders	5
	Inclusivity/accessibility for all race/religion	4
BIODIVERSITY		33
	Community garden	18
	Environmental education programs	15
FOOD		33
	Add eatery/café	12
	Food-related activities (skills/programs)	11
	Food bank	7
	Soup kitchen	3
NETWORKS & CONNECTIVITY		30

Theme	Subtheme	Frequency
	Technology access (computers, WiFi)	19
	Online booking system/noticeboard	6
	Improve parking	5
INCOME & WORK		19
	Office/co-working spaces	19
PEACE & SAFETY		9
	Safe space	9
OTHER		4
	Maintain current level	4
CLIMATE & CHANGE		3
	Reinstating recycling stations	3
WATER		2
	Water fountains/taps	2

Table 29: What are at least three things that you would like to see offered at a community facility or space?

Selected Responses

"Predominantly activities aimed at teenagers. There is very little for them to do in Kāpiti."

What are at least three things you would like to see offered at a community facility or space?

23.2 How important are community spaces like the Te Newhanga Kāpiti Community Centre to the community?

Respondents were asked how important community spaces like the Te Newhanga Kāpiti Community Centre are to the community, whether they used them or not.

They gave their answers on a scale from 0-10, where 0 means not at all important and 10 means very important. **Error! Reference source not found.** details how important these community spaces are to the community, according to the respondents. The overwhelming majority of respondents reported that community spaces like Te Newhanga Kāpiti Community Centre were of the highest importance to the community.

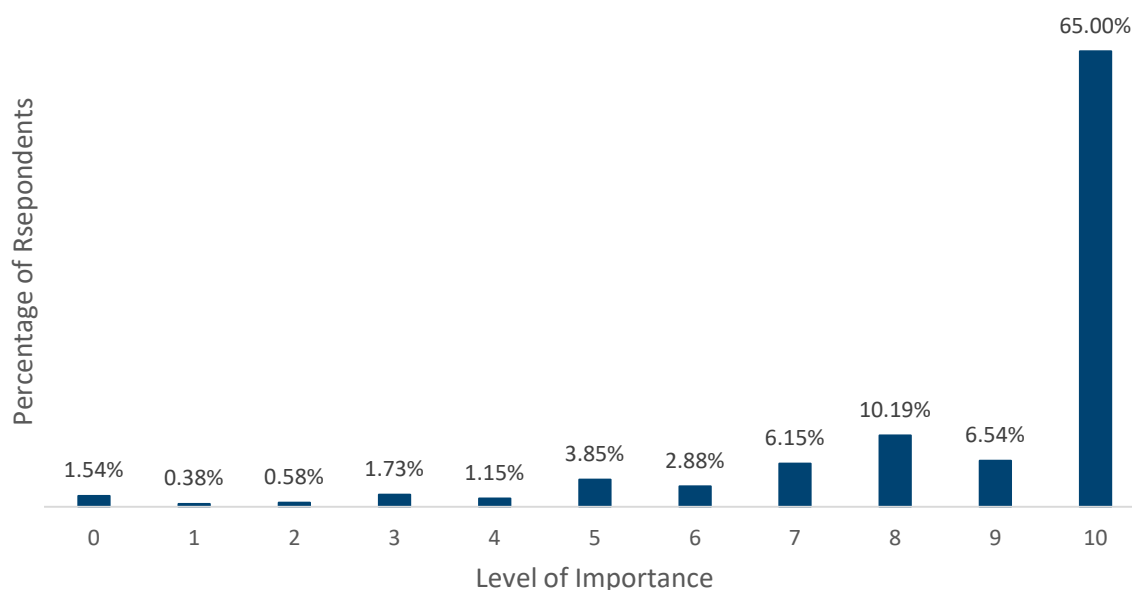


Figure 6: How important are community spaces like the Te Newhanga Kāpiti Community Centre to the community?

23.3 Why do you say that?

Respondents were asked why they gave their answer to **Error! Reference source not found.. Error! Reference source not found.** details what respondents’ reasons for answering that way were.

Overview of responses

Connections with others — Respondents highlighted the need for spaces where people can meet and avoid loneliness, access safe facilities for community meetings, and have a central hub and meeting point. The community spaces were seen as crucial for building relationships, fostering understanding, and supporting well-being and health. There was also a call for more support for youth and less fortunate individuals, as well as the importance of inclusivity and accessibility in these community spaces.

Networks & connectivity — Respondents emphasise the importance of having a central, affordable, and accessible community space for various activities, events, and meetings. They mention that there is a lack of such spaces in the area and having a community centre can help support community needs and build stronger communities.

Community partnership — Respondents emphasise the importance of having a safe and accessible space for the community to meet, gather, and hold events. They mention that community groups often struggle to find affordable venues and that existing buildings should be audited to maximise occupancy. A community centre is seen as a hub for information, activities, and support for various groups, including the elderly and those in need. However, some respondents’ express concerns about the cost and prioritisation of a community centre.

Theme	Subtheme	Frequency
CONNECTIONS WITH OTHERS		601
	Provides space for community gatherings and events	150
	Fosters social connections	132
	Supports community development	70
	Provides recreational activities/entertainment	35
	Provides accessible services and support	30
	Combats social isolation	26
	Provides a welcoming space for the community	24
	Supports diverse community needs	20
	Promotes community wellbeing	19
	Do not utilise community spaces	18
	Community has sufficient spaces and facilities	14
	Provides an identity/pride	14
	Fosters connections between diverse groups	10
	Provides space for youth activities	9
	Lack of public awareness	8
	Increase the number of community spaces	6
	Provides face-to-face connections	5
	Supports community resilience	5
	Community spaces remain underutilised	3
	Provides space for families	3
NETWORKS & CONNECTIVITY		219
	Provides a needed community space	92
	Provides central hubs with easy access	64
	Offers affordable venue options	48
	Provides neutral, non-commercial space	11
	Importance determined by use	4
COMMUNITY PARTNERSHIP		86
	Supports community groups and organisations	47
	Supports vulnerable community members	15
	Concerns about Council spending/rates increases	9
	Offers information and resources	8
	Other more important priorities for Council	7
EDUCATION & TRAINING		34
	Offers educational opportunities	29
	Facilitates skill-sharing	5
PEACE & SAFETY		26

Theme	Subtheme	Frequency
EQUALITY	Provides a safe space for the community	26
		26
	Supports accessibility for elderly/disabled	13
	Supports accessibility for all race/religion	7
HEALTH	Supports accessibility for all genders	6
		9
FOOD	Supports mental health	9
	Helps alleviate rising food costs	1
		1

Table 30: Why do you say that?

Selected Responses

"Community Spaces allow more choice and more accessibility when it comes to event holding. Also, they provide a space where everyone in the community feels welcome and allows different groups and people to coexist, communicate, collaborate and create with one another. Also, derelict and empty buildings, especially community ones or Council owned ones reflect negatively on a community. Look Good, Feel Good. Do Good, Be Good."

Why do you say that?

"Because it is the heart of the community, and a place where people can go and feel visible, included, connected and productive."

Why do you say that?

"A shared community space is the centre of any strong community. It brings together people and gives people an opportunity to socialise, learn and access key services from all backgrounds."

Why do you say that?

23.4 Please tell us the extent to which you disagree or agree that there is a good range of community facilities, social services, activities, programmes and events in the Kāpiti area.

Respondents were asked whether they thought there was a good range of community facilities, social services, activities, programmes and events in the Kāpiti area.

They gave their answers on a scale from 0-10, where 0 means strongly disagree, and 10 means strongly agree. **Error! Reference source not found.** details the results. There is a large spread in the views of respondents, with an overall level of indifference regarding the extent to which the range of community facilities, social services, activities, programmes and events in the Kāpiti is sufficient.

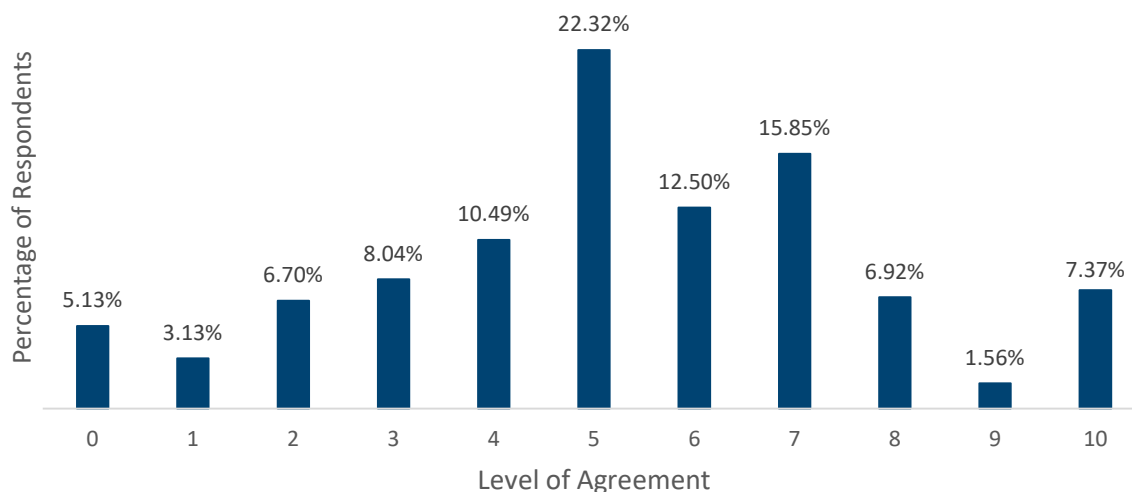


Figure 7: Extent to which you disagree/agree that there is a good range of community facilities in Kāpiti.

23.5 Why do you say that - and what, if anything, is missing?

Respondents were asked why they gave their answer to **Error! Reference source not found.**, and if what they thought, if anything, was missing. **Error! Reference source not found.** details what respondents' reasons for answering that way were, and what they thought was missing.

Overview of responses

What is missing? — Respondents believe that there is a lack of larger events centres for sports, a community centre in the middle of Paraparaumu, and facilities that are welcoming and accessible to everyone. There is also a need for more activities for young adults and playgroup facilities, as well as more support groups and activities for all age groups. Overall, respondents feel that there is a lack of coordination of services and communication about available activities in the community.

Connections with others — Respondents say that there is a good range of activities and facilities available for families and older people, but not enough options for youth. Some feel that more activities should be provided for school-aged children and teenagers. Overall, there is a belief that the Kāpiti Coast has a variety of community events, clubs, and groups, although some feel that there is room for improvement and more offerings are needed as the population grows.

Theme	Subtheme	Frequency
WHAT IS MISSING		512
	Youth-focused activities and facilities	63
	A centralised/accessible community space	41
	More communication and advertising is required	30
	Access to information and support services	29
	Education facilities and programs	26
	Activities and spaces for young children	24
	Free or affordable activities	23
	Spaces for smaller group gatherings	23
	Affordable venues for hire	22
	Indoor sports and recreational facilities	21
	Activities and events generally	17
	Adult-focused activities and facilities	15
	A space for community gatherings and events	14
	Community centres	14
	Spaces for art and culture	14
	Variety and number of spaces	14
	Maintenance/repair of current infrastructure	12
	Accessibility improvements for disabled/elderly	11
	Venues available for booking	11
	A community centre in central Paraparaumu	8
	A welcoming space for the community	8
	Activities and spaces for families	7
	Community led initiatives	7
	Support for vulnerable community members	7
	After hours activities for working individuals	6
	Outdoor community events	6
	Outdoor sports and recreational facilities	6
	There are no or few facilities	6
	A community centre in Ōtaki	4
	Exercise/fitness classes	4
	Facilities and services for the elderly	4
	Healthcare facilities and services	4
	Multi-purpose community spaces	4
	Parking facilities	4
	Safe spaces and places	3
CONNECTIONS WITH OTHERS		43
	Sufficient activities and events provided	11
	Good range currently provided	10

Theme	Subtheme	Frequency
	Sufficient facilities provided	9
	Good range for the elderly	7
	Population trends should determine spaces	3
	Provides accessible services and support	3
COMMUNITY PARTNERSHIP		4
	Other more important priorities for Council	4
FOOD		1
	Support for community gardens and local food production	1
HOUSING		1
	Maintain affordable rates	1

Table 31: Why do you say that - and what, if anything, is missing?

Selected Responses

"Because we don't know what we don't know. We often have to make hundreds of calls or be lucky to speak to someone who can offer the correct assistance."

Why do you say that - and what, if anything, is missing?

"Most things are aimed at the very young (under 5) or the over 65s and barely anything for do on a wet or cold day. People complain about our young people, but they have very few places to go. No indoor bowling, mini golf, paintball, skate park (indoor) and the Council have indoor spaces going to waste."

Why do you say that - and what, if anything, is missing?

"It's missing a hub/drop in community centre, so activities are often spread around the area and can easily be missed/people not aware that they're happening. There's a gap for night classes. There's no local low cost or free Te Reo classes (nearest is Ōtaki or Porirua)."

Why do you say that - and what, if anything, is missing?

23.6 Do you have any other comments or suggestions about community spaces in the Kāpiti area?

Respondents were asked if they had any additional comments or suggestions about community spaces in the Kāpiti area. **Error!**

Reference source not found. details the suggestions that respondents had.

Overview of responses

Connections with others — Respondents expressed the need for more community spaces, particularly centres that cater to different communities and age groups. Others emphasised the importance of maintaining and improving existing facilities and that refurbishment should be a top priority. Accessible and inclusive spaces that offer activities for youth, families, and different cultures were also highlighted. Overall, there was a strong desire for the Council to prioritise the rebuilding and maintenance of community centres.

Community partnership — The respondents emphasise the importance of community involvement in running the community centre, with the Council facilitating the space. They also emphasise the need for a welcoming and inclusive space that caters to all cultures, abilities, and ages. The respondents also highlight the need for affordable and accessible contemporary spaces, prioritising input from different community groups, and the importance of community agency and management in community spaces.

Networks & connectivity — Parking is a major concern, with some expressing the need for more spaces and better accessibility. Some respondents mentioned the need for a centralised booking system and highlighted the importance of user-friendly and safe areas. There is also a strong emphasis on the importance of community spaces easily reachable through walking or public transport. Additionally, there are mentions of concerns about waiting areas and transportation access for the elderly.

Theme	Subtheme	Frequency
CONNECTIONS WITH OTHERS		127
	Maintenance/repair of current infrastructure	22
	Increase the number of community spaces	21
	Need indoor sports and recreational facilities	13
	Need more outdoor recreational spaces	13
	Need more youth-focused activities and facilities	8
	Rebuild and reopen community centre	8
	Need activities and spaces for families	7
	Need activities and spaces for young children	6
	A space for community gatherings and events	5
	Affordable venues for hire	5
	Need for covered outdoor spaces	5

Theme	Subtheme	Frequency
	More cultural and arts spaces	4
	Need for a community centre in Ōtaki	4
	Need more public toilets	3
	Repurpose Raumati Beach pool building	3
COMMUNITY PARTNERSHIP		57
	Need for centralised/accessible community space	17
	Concern about Council spending/rates	12
	Improved consultation process	11
	Provision of accessible services and support	7
	Access to information and support services	5
	More communication and advertising is required	5
NETWORKS & CONNECTIVITY		10
	Improve parking facilities	6
	Improved accessibility and transport options	4
BIODIVERSITY		5
	Include community gardens	5
PEACE & SAFETY		4
	Enhanced safety measures	4
EDUCATION & TRAINING		1
	Need enhanced education facilities and programs	1
HEALTH		1
	Establish local healthcare facilities	1
INCOME & WORK		1
	Better integration with local businesses	1
CLIMATE & CHANGE		1
	Sustainable facility design	1

Table 32: Do you have any other comments or suggestions about community spaces in the Kāpiti area?

Selected Responses

"It is really sad that it was not maintained properly and had to close. Please make sure that all facilities are well maintained from now on."

Do you have any other comments or suggestions about community spaces in the Kāpiti area?

"I believe that each of the different communities should have their own centre - with perhaps Paraparaumu having an even wider range of facilities for bigger events."

Do you have any other comments or suggestions about community spaces in the Kāpiti area?

"Be careful to collect youth voices, family voices to ensure a balanced. We know that certain groups tend to dominate community consultations due to their time and resources. I am very keen to hear what mana whenua have to say about how this space should be used and their feedback needs to be prioritised."

Do you have any other comments or suggestions about community spaces in the Kāpiti area?

"User-friendly. Safety of those using area crucial. Good lighting and parking."

Do you have any other comments or suggestions about community spaces in the Kāpiti area?

24 Takutai Kāpiti

Takutai Kāpiti is Council's initiative to adapt to coastal changes. It focuses on how the community and Council can respond to sea level rise and its effects on the environment and infrastructure. This section summarises community feedback on coastal adaptation gathered through Takutai Kāpiti.

Data was collected through two methods:

- In-person Community Workshops: Held between June 2022 and November 2023 at various locations throughout Kāpiti, with 652 participants.
- Online "Have Your Say" (HYS) survey: Completed by 137 respondents.

The combined efforts yielded over 2626 data points.

24.1 What do you value most about living in this area?

Respondents were asked what they value most about living in Kāpiti. **Error! Reference source not found.** details what respondents most love about living in the area.

Overview of responses

Recreation & leisure — Respondents mention various aspects about recreation and leisure in relation to access to the sea, dog walking, and a range of activities in Kāpiti. Living near the sea is seen as an advantage, especially with easy access to the beach and safe swimming for kids. Other highlights include MacLean Park's great facilities for all ages, the protection of the beach by Kāpiti Island, and the coastal living with its parks, beaches, and nature.

Connections with others — Respondents spoke positively about their connections with others in the community, highlighting aspects such as friendly people, sense of community, family-friendly environment, and strong relationships within small local communities. They also mentioned the cultural diversity and inclusivity of the community, the access to beaches and outdoor spaces, and the supportiveness of the community. Overall, the respondents expressed a sense of belonging and pride in their community.

Climate & change — Respondents expressed positive sentiments towards the climate and environment of the Kāpiti Coast. They valued aspects such as clean and natural living, sunsets, sea views, and proximity to the beach. Additionally, they appreciated the protection and access provided by sea walls and expressed a desire to preserve the coastline and restore the natural environment.

Theme	Subtheme	Frequency
RECREATION & LEISURE		655
	Proximity/access to seaside and beaches	176
	Proximity to nature	121
	Proximity to the ocean/sea	83
	Recreational activities	75
	Hiking/walking access	44
	Proximity to Kāpiti Island	29
	Proximity to rivers	27
	Cycling access	21
	Proximity to mountains/hills	17
	Proximity to sandy beach	17
	Proximity to estuary	13
	Dog-friendly areas	12
	Proximity to QE Park	12
	Proximity to the Tararua Ranges	4

Theme	Subtheme	Frequency
	Proximity to wetlands	4
CONNECTIONS WITH OTHERS		171
	Community feel and initiatives	98
	Family-oriented environment	19
	Historical and cultural significance	19
	Māori community/identity	14
	Proximity to friends/family	8
	Arts/culture	6
	Progressiveness	4
	Development	3
CLIMATE & CHANGE		128
	Enjoy the local climate and weather	40
	Importance of coast for protection and benefits	31
	Enjoy the views	21
	Protection of local flora/fauna	11
	Appreciate the sunsets	8
	Air quality	6
	Stormwater/wastewater systems	6
	Lack of pollution	5
NETWORKS & CONNECTIVITY		115
	Proximity/access to amenities/services	39
	Accessible and reliable public transport	27
	Proximity to Wellington	24
	Airport access	10
	Accessibility	8
	Proximity to nearby towns	7
PEACE & SAFETY		88
	Safe and secure	30
	Quiet, peaceful living	25
	Space/freedom	19
	Absence of traffic	10
	Ability to have say/vote	4
LIFESTYLE		67
	Fond of small-town character	21
	Appreciate slower lifestyle	20
	Uniqueness	8
	Appreciate the village feel	7

Theme	Subtheme	Frequency
	Rustic/rural appeal of the town	4
	Village atmosphere	4
	Independent of Wellington	3
INCOME & WORK		40
	Enjoy dining experiences	14
	Enjoy visiting local shops	14
	Affordability of living	5
	Tourism	4
	Variety of shops	3
EQUALITY		19
	Inclusive of diversity	12
	Preservation for future generations	7
EDUCATION & TRAINING		14
	Access to schools	11
	Alternative schooling options	3
HEALTH		14
	Mental health/personal wellbeing	11
	Access to healthcare facilities	3
LAND USE & QUALITY		13
	Low density/lack of urban sprawl	13
COMMUNITY PARTNERSHIP		10
	Concern regarding the consultation	10
FOOD		8
	Access to locally grown food	8
HOUSING		4
	Availability of housing	4

Table 33: What do you value most about living in this area?

Selected Responses

"I moved here to be by family, by the beach and live in a beautiful community where we can trust the local Council to make good decisions."

What do you value most about living in this area?

"Access to the walking paths, beach, and down to the city. It's underdeveloped which means it's the original 5 min village."

What do you value most about living in this area?

"The environment - mountains to the sea. I can go mountain biking in Whareroa in the morning enjoying mountain forests and have a walk on the beach in the afternoon. I love the range of nature I can see here."

What do you value most about living in this area?

"Love the way the coast and beach and Kāpiti Island outlook supports our mental wellbeing. Culturally, spiritually and with the multiple therapeutic sensory experiences provide with life on the coast."

What do you value most about living in this area?

24.2 How important is our coastline to you?

Respondents were asked how important the coastline is to them. **Error! Reference source not found.** details the results.

Overview of responses

Recreation & leisure — Respondents expressed positive sentiments towards recreation and leisure activities on the beach, such as walking, swimming, cycling, sunbathing, and fishing. Other important aspects highlighted include the accessibility of Kāpiti Island for tourism, the wide sandy beach, and the value of the coastline for community gathering, exercise, relaxation, and connection to nature. Overall, the beach is seen as an asset for the community, providing opportunities for various recreational activities and a sense of wellbeing.

Connections with others — Respondents express a strong connection and love for the beach and coastline, highlighting its importance for physical and mental health, recreation, and community. They mention regular beach walks, swimming, and the enjoyment of nature. Access to the beach is considered vital and an essential part of lifestyle.

Land use & quality — Respondents emphasise the importance of the coastline and its role in defining the landscape and protecting properties. They also highlight the further need for maintenance and protection of the coastline, including the development of seawalls and planting to enhance protection. The coastline is seen

as a valuable community asset, integral to the identity and way of life in the Kāpiti Coast.

Theme	Subtheme	Frequency
RECREATION & LEISURE		262
	Enjoyment of beach activities	99
	Enjoyment of water sports activities	71
	Value of fishing and boating opportunities	37
	Enjoyment of other recreational activities	36
	Proximity to sandy beach	10
	Significance of access to Kāpiti Island	9
CONNECTIONS WITH OTHERS		155
	Importance of regular beach visits	82
	Consider the coastline home	34
	Benefits of social interactions and connections	24
	Emotional connection to coastline	12
	Significance of community events and gatherings	3
LAND USE & QUALITY		122
	Coastline defines geography	31
	Importance of protecting the coastline	28
	The coastline is very important	20
	Importance of coast for protection and benefits	19
	Issues with beach access points and maintenance	17
	Concern about erosion and property protection	7
HEALTH		63
	Improvements in mental health and wellbeing	63
PEACE & SAFETY		56
	Recognition of natural beauty and views	53
	Appreciate the safety of the coastline for kids	3
BIODIVERSITY		50
	Importance of wildlife observation/birdwatching	24
	Appreciation for coastal habitat	22
	Appreciation for native coastal plant species	4

Theme	Subtheme	Frequency
NETWORKS & CONNECTIVITY		44
	Concern regarding vehicle access	11
	Identification with coastal community character	8
	Amenities allow for disability access	7
	Appreciate the efforts to maintain the coastline	7
	High tide limits access	4
	Recognition of coastal tourism importance	4
	Support for local coastal businesses	3
RIVER/OCEAN HEALTH		26
	Concern regarding waste and water quality	18
	Appreciation for clean, unpolluted beaches	8
COMMUNITY PARTNERSHIP		19
	Concern regarding the consultation Council regulations limit use and enjoyment	15
		4
CLIMATE		8
	Concern with erosion due to climate events	5
	Necessity for climate change adaptation strategies	3
EQUALITY		7
	Issues with accessibility for elderly and disabled	7
EDUCATION & TRAINING		3
	Opportunities for coastal environmental learning	3
HOUSING		3
	Appreciation for coastal living lifestyle	1
	Concern about coastal property values	1
	Managed retreat will be a barrier to access	1
INCOME & WORK		2
	Benefits of beach tourism on local economy	2
FOOD		1
	Concern about seafood sustainability	1

Table 34: How important is our coastline to you?

Selected Responses

"Like our seawall. Provides protection. Allows wheelchair and high tide access and for elderly."

How important is our coastline to you?

"Very important. We are very concerned about protecting our sand dunes and the plant and animal ecosystem. We have already undertaken a couple of working bees where we have culled the lupins planted new grasses."

How important is our coastline to you?

24.3 How concerned are you about coastal hazards like erosion and flooding, and why?

Respondents were asked how concerned they are about coastal hazards like erosion and flooding and why they were concerned about these hazards. **Error! Reference source not found.** provides an overview of the level of concern of respondents and the reasons for their concern.

Overview of responses

Community partnership — Respondents express a range of concerns and frustrations about the community partnership regarding coastal hazards. They feel that people are being ignored and the Council's approach of managed retreat is not satisfactory to safeguard the coastal lifestyle. There is a lack of transparency, inadequate planning, and a feeling that the process is predetermined. The use of flawed science and the exclusion of sea walls in the modelling are also criticised. There is a desire for more action, urgency, and consultation with the community.

Land use & quality — Respondents express varying levels of concern about land use and quality. Some are very concerned about erosion and coastal hazards, while others are not concerned at all. Concerns include the cost of managing retreat and protecting coastal communities, the impact of climate change, and the need for sustainable practices and planning.

River/ocean health — Respondents express concerns about the risks associated with changing currents, floods from rivers impacting beaches, stormwater erosion,

and poor water management. They emphasise the importance of maintaining and improving seawalls, clearing waterways and drains, and addressing the impact of global warming and sea level rise. Concerns also include erosion, flooding, lack of maintenance, and the need for immediate action to protect coastal properties and infrastructure.

Theme	Subtheme	Frequency
COMMUNITY PARTNERSHIP		156
	Concern about inadequate Council planning/action	72
	Concern about lack of community consultation	26
	Concern about governance by CAP	20
	Concern about the reliability of Jacobs Report	14
	Concerned retreat is the predetermined outcome	8
	Concern about lack of risk notification	5
	Community building/collective response required	4
	Desire for proactive mitigation	4
	Concern about governance cohesion	3
LAND USE & QUALITY		155
	Concerned about erosion and flooding	56
	Not concerned about erosion and flooding	56
	Concern about building on inappropriate sites	18
	Concern about cost generally	16
	Concern about impact of increasing development	9
RIVER/OCEAN HEALTH		139
	Concern about lack of seawall maintenance/builds	32
	Concern about stormwater management	26
	Concern about beach shape and sand movement	20
	Concern about impact on groundwater	13
	Concern about human-induced damage and erosion	10
	Concern about lack of maintenance of waterways	8
	Concern about Waimeha Stream	7
	Appreciation for sea wall protection	6

Theme	Subtheme	Frequency
HOUSING	Concern about accretion of Waikanae River	6
	Concern about higher tide lines	5
	Concern about flooding from rivers and storms	3
	Concern about increased accretion	3
		90
	Concern about property value and insurance	36
	Concern about property loss or damage	21
	Concern about Council regulations for defence	15
	Concern about rising property rates	6
	New homes should be flood and climate resilient	5
CLIMATE & CHANGE	Concern about erosion impact on property	4
	Concern about flooding impact on property	3
		64
	Scepticism of scientific modelling and scenarios	22
	Concern about extreme weather events	14
	Concern about the uncertainty of climate change	10
	Scepticism about sea level rise threat	7
	Concern about sea level rise	6
	Concern about tsunami	5
		40
BIODIVERSITY	Appreciation for dune protection	17
	Concern about wildlife habitat protection	12
	Concern about lack of dune maintenance/planting	5
	Concern about erosion of Waikanae dunes	3
	Concern about impact on Queen Elizabeth Park	3
		36
NETWORKS & CONNECTIVITY	Concern about loss of infrastructure	14
	Desire for proactive infrastructure maintenance	9
	Concern about lack of maintenance generally	8

Theme	Subtheme	Frequency
	Concern about cost of infrastructure generally	5
CONNECTIONS WITH OTHERS		34
	Concern about beach access	11
	Concern regarding the impact on future generations	9
	Concern about impact on recreation	6
	Concern about impact on lifestyle	5
	Appreciation of coastline community identity	3
HEALTH		21
	Concern about community wellbeing	10
	Concern about impact on mental health	8
	Concern about social implications of retreat	3
WATER		13
	Concern about sewage system vulnerability	9
	Concern about impact on water supply	4
EDUCATION & TRAINING		3
	Need for coastal processes education	2
	Need for international management examples	1
INCOME & WORK		3
	Concern about impact on livelihood	3
ENERGY		3
	Concern about the impact on power supply	2
	Concern about the impact on gasoline	1

Table 35: How concerned are you about coastal hazards like erosion and flooding, and why?

24.4 How do you think our coastline should be protected?

Respondents were asked how they thought the coastline should be protected. **Error! Reference source not found.** provides an overview of suggestions made by respondents.

Overview of responses

River/ocean health — Respondents express a preference for engineered solutions to protect rivers and oceans over retreating. They suggest implementing better stormwater management, preserving existing seawalls, and maintaining them to

adapt to sea level rise. There is a desire to protect dunes, estuaries, and coastal wetlands through restoration and planting, and to prioritise the protection of public and private property. There is also a call for better integration between local and regional councils and maintaining the integrity of the coastline.

Community partnership — Respondents express a desire for the Coastal Advisory Panel (CAP) to be a true representation of the community and suggest the appointment of a non-biased chair. They also criticise the lack of consultation and communication from the CAP and call for improved transparency and community involvement. Some respondents raise concerns about the use of flawed science and the high costs associated with consultants and reports.

Biodiversity — Respondents express the need for better planting and management of dunes to protect properties and the natural environment. They also advocate for the maintenance of seawalls and sea infrastructure and the protection and restoration of wetlands and other natural habitats. There is a call for a balance between property protection, environmental preservation, and long-term measures, as well as a focus on public education.

Theme	Subtheme	Frequency
RIVER/OCEAN HEALTH		268
	Support for improved/additional seawalls	81
	Support for improved stormwater management	37
	Support for river maintenance/pollution prevention	33
	Support for improved/additional coastal defences	21
	Support for improved waste management	18
	Support for traditional/natural coastal defences	17
	Concern about interference with natural process	12
	Maintain current level of coastal protection	10
	Support for R&D of new technology	10
	Support for improved enforcement of rules	8
	Restrict commercial and recreational fishing	6
	Support for general protection from erosion	5
	Concern about effectiveness of seawalls	4
	Support for addressing inland water table issues	3
	Support for greater measurement/monitoring	3

Theme	Subtheme	Frequency
COMMUNITY PARTNERSHIP		224
	Support for more inclusive/transparent engagement	54
	Support for medium/long-term plan	28
	Concern about governance by CAP	21
	Criticism of consultation process	21
	Support for learning from other examples	14
	Support for inclusion of local/expert knowledge	13
	Concern about representation in decision-making	12
	Concern about Council ability to have impact	11
	Support public-private collaboration in defence	11
	Concern about Council spending/rates	8
	Concern about the reliability of Jacobs Report	8
	Support for immediate solution	8
	Support for greater Council control of coastline	6
	Concern about inadequate Council planning/action	5
	Concern about negative effects of bureaucracy	4
BIODIVERSITY		141
	Support for dune restoration and management	57
	Support for increased planting	42
	Support for improved protection of wildlife	20
	Support for protecting/expanding wetlands/reserves	19
	Support for balancing ecological needs with protection	3
LAND USE & QUALITY		101
	Concern about building in high-risk areas	26
	Support for protection of public infrastructure	19
	Support for managed retreat	18
	Support for case-by-case approach	14
	Opposed to managed retreat	10

District Vision — Summary Report

Theme	Subtheme	Frequency
	Concern regarding high-density coastal development	6
	Concern about intensification	5
	Support for changing coastal building regulations	3
NETWORKS & CONNECTIVITY		70
	Support for improved access to beach/ocean	25
	Support for limiting vehicle access to beach	15
	Support for limiting access to restoration areas	12
	Support for improved roads	10
	Support for addressing The Parade access	5
	Support for addressing Ames St access	3
EQUALITY		41
	Concern about distribution of protection costs	27
	Debate about protecting private vs public assets	5
	Equitable approach to protection	5
	Support for targeted approach to funding	4
CLIMATE & CHANGE		28
	Concern about environmental health impacts	10
	Scepticism about sea level rise and climate change	9
	Concern about climate change fear-mongering	6
	Prefer a focus on mitigation	3
EDUCATION & TRAINING		22
	Support for public information on coastal issues	13
	Support for improved education	9
HOUSING		21
	Support for protecting existing coastal properties	15
	Concern about impacts on insurance	3
	Concern about impacts on property value	3
PEACE & SAFETY		4

Theme	Subtheme	Frequency
	Concern about peaceful living	2
	Support for improved road safety	1
	Support for improved sea safety	1
INCOME & WORK		1
	Concern about economic impacts	1
HEALTH		1
	Support for health benefits of beach access	1

Table 36: How do you think our coastline should be protected?

Selected Responses

"Preference for engineered solutions over 'retreat'."

How do you think our coastline should be protected?

"We want to be protected from bad decisions e.g. Managed retreat for an accreting coastline when all that is needed is well-designed & maintained hard structures e.g. seawalls, roads & replenishing sand dunes as needed."

How do you think our coastline should be protected?

"Not concerned about sea levels, more about fear mongering to make us worry which affects insurance, bank mortgage rates, etc."

How do you think our coastline should be protected?

"[Need] Community feedback and information to flow both ways, not just on Facebook! Accessible to all or our community. Informing all of our community for all ages."

How do you think our coastline should be protected?

"Let the coastal ebb and flow of sand continue naturally."

How do you think our coastline should be protected?

"Difficulty with only maintaining public assets - need to co-ordinate /organise approach in conjunction with private landowners - otherwise if not done, can weaken parts already gone."

How do you think our coastline should be protected?

24.5 Who should pay?

Respondents were asked who should pay. **Error! Reference source not found.** provides a summary of who respondents feel should pay.

Overview of responses

Funding sources — Respondents mention the importance of being reimbursed by the Council and highlight that they cannot just be the consenter and then walk away. They express confusion about the question of how to fund, stating that they are going to pay. National funding is also mentioned as a source. The idea that in the end everyone pays indirectly through taxes and directly through rates is emphasised. Joint sources of funding, such as ratepayers, central government, and corporation tax, are suggested. The question of who should pay is raised, with the government, council, and residents listed as possible options. Taxes are mentioned but deemed inadequate, prompting the need for a discussion.

Theme	Subtheme	Frequency
FUNDING SOURCES		4
	Combination of rates and central funding	4
SHORT TERM SPENDING		1
	Opposed to short term spending	1

Table 37: Who should pay?

Selected Responses

"Yes, to be reimbursed by Council. They can't be the consenter and then walk away."

Who should pay?

"In the end we all pay" - Indirectly - Taxes & Directly - Rates."

Who should pay?

"Joint Sources. e.g. Ratepayers + Central Govt?? + Corporation tax."

Who should pay?

"Taxes? Needs to be discussed. Rates inadequate."

Who should pay?

"National funding."

Who should pay?

25 Paekākāriki: What Next? Planning for vibrant, equitable and sustainable village life after the opening of Te Ara Nui Te Rangihaeata.

This section of the report provides an overview of the 2022 participatory project 'Paekākāriki: What Next?'. The aim of the project was to understand local perspectives on the impact of the new road opening and future aspirations for Paekākāriki. The participatory project included 26 interviews, 2 focus groups with school children, 2 public workshops, and meetings with Ngāti Haumia iwi representative Karl Farrell.

Key changes identified since Te Ara Nui Te Rangihaeata opened include:

- Quieter, more peaceful weekends without accident sirens
- Beach Road feels less like a passing place, has potential as a social hub
- Need to restore mana and mauri Māori, tell the place's story
- Easier, quieter access from SH59 but still some safety issues
- Less drop-in shoppers impacting local businesses
- Beach Road cafés crowded on weekends, locals avoiding the area
- Popular weekday destination for older visitors
- Opportunity to attract more families for weekend excursions
- Need to make village more welcoming for local children and youth.

Five key shifts defined:

- From diminishing social action to empowering autonomous youth action
- From retail strip to welcoming place of Ngāti Haumia
- From each having land to all whakamana i te whenua (empowering the land)
- From lollies on a seat to barefoot independence to play
- From Pakeha leadership to Pakeha supporting sustainable Iwi.

Strategies & projects proposed:

- Identify and enable community use of public spaces
- Develop child and youth vision through school projects and youth-led process
- Support Ngāti Haumia leadership sustainably with design guides, naming, tikanga

- Enhance Beach Road as a welcoming social hub for diverse groups, especially children and youth, through traffic calming, amenities, native planting, playable elements
- Consider 30 km/h speed zone village-wide for traffic safety.

In summary, the report provides a community-informed vision and strategies for evolving Paekākāriki, especially the Beach Road area, to become a more vibrant, equitable, sustainable and welcoming place for all after the opening of the new road. It emphasises restoring Māori identity, empowering youth, and enhancing social and physical amenities to serve the whole community.

26 Friends of Te Horo Beach: Participatory Mapping Activity

The goal of the Friends of Te Horo Beach: Participatory Mapping Activity was to identify and share the significant aspects of the local community and environment.

Data was collected through a mapping activity:

- Participants: Friends of Te Horo Beach, approximately 18 members
- Facilitator: Liz Gibson from Mountains to Sea Wellington
- Method: Group mapping exercise.

The activity was structured into four main tasks:

- Drawing boundaries: Defining the focus area for Friends of Te Horo Beach
- Adding key features: Marking roads, landmarks, property boundaries, and housing areas
- Identifying significance: Marking positive and negative aspects of the area
- Cataloguing elements: Noting activities, natural features, resources, community assets, and wish list items.

The participants were divided into three groups to complete these tasks.

Key findings from the activity included:

Identifying focus area boundaries

- Consensus on the Ōtaki River as the northern boundary and the ocean as the western boundary
- Minor differences in the southern and eastern boundaries.

Key themes — natural environment:

- The beach is a focal point with recreational, cultural, and ecological importance
- Concerns about dog control, removal of stones and woody debris, and vehicle access on the beach
- Desire for better pest plant management (boxthorn, gorse, pampas grass)
- The Mangaone Stream is important but has water quality and human health issues due to farm contamination
- Positive views on the predator-free network and the need for a strategic approach to rabbit control.

Key themes — community & services:

- Minimal built environment and self-reliance are valued
- Desire for no further building but improvements in community amenities
- Importance of parks and reserves, with a preference for native vegetation
- Lack of public transport and the need for a bus service to the beach community
- Concerns about low-lying roads and flood risks
- Appreciation for community security measures, public toilets, murals, and bench seats
- Importance of quietness and concerns about noise pollution from the flight path over the beach.

27 Social and Community Sector Vision Submission

The Capable Sector Project is facilitated by the Kāpiti Impact Trust (KIT) and Volunteer Kāpiti with connection with over 100 social and community sector organisations across the district. The Project undertook a kanohi ki te kanohi (in person by trusted faces) workshop approach to deliver a collective submission to the Vision Kāpiti process that represented the views and aspirations of the community and social sector in the region.

The subsequent submission was endorsed by over 20 community organisations across Kāpiti, including Age Concern Kāpiti, Benefit Advocacy Kāpiti, Cancer Society Wellington Division, Citizens Advice Bureau Kāpiti, Citizens Advice Bureau Ōtaki, Coast Access Radio Trust, Dementia Wellington, Energise Ōtaki Charitable Trust, Hora Te Pai, Kaibosh Food Rescue, Kāpiti Impact Trust, Kāpiti Meals on Wheels (Red Cross Group), Kāpiti Youth Support – KYS, Kāpiti Women’s Health Collective Inc, Menzshed Kāpiti, Ōtaki Community Network Forum, Ōtaki Health and Wellbeing

Advisory Group, Society of St Vincent de Paul, Kāpiti Conference, Te Ara Korowai, Te Puna Oranga o Ōtaki, The Road Forward, The Salvation Army, Volunteer Kāpiti.

Key findings from the workshop included:

- Commending Council for taking a long-term view beyond typical planning cycles
- Emphasising the importance of keeping people and wellbeing at the centre of decision-making amid uncertainty and change
- Proposing core values to guide the vision and implementation:
 - Whakapapa (whānau, identity, whenua)
 - Whanaungatanga (connections, compassion, participation)
 - Ūkaipōtanga (belonging, nourishment, Tūrangawaewae)
 - Wairuatanga (spirituality, life force, self-care)
 - Manaakitanga (mana enhancing behaviours, reciprocity, service)
 - Rangatiratanga (leadership, responsibility, guidance, wisdom)
 - Kotahitanga (unity, purpose, shared vision, strength in collaboration and coming together).

Areas for improvement:

- Honour Te Tiriti o Waitangi
- Recognise and support the critical role of the community/social sector
- Use evidence of these values enriching people's lives as measures of success.

Selected Responses

“When we do get to 2060, what will really matter is that people’s lives are enriched by these values in action, and we will be well able to continue to envision a healthy future.”

The Community and Social Sector

“The way that KCDC, and the community at large, go about implementing a Vision towards 2060 will be as important as any of the strategies, goals, and measures.”

The Community and Social Sector

Produced by PublicVoice Limited

Suite 2, 5 Bouverie Street

Petone

Lower Hutt, 5012

Ph: (04) 909 7463

Email: info@publicvoice.co.nz

The views expressed in this report are those of the author(s) and do not necessarily reflect the position of the Kāpiti Coast District Council. The Kāpiti Coast District Council does not accept any liability for claims arising from the reports content or reliance on it.