

# Kāpiti Indoor Courts Feasibility Study Findings

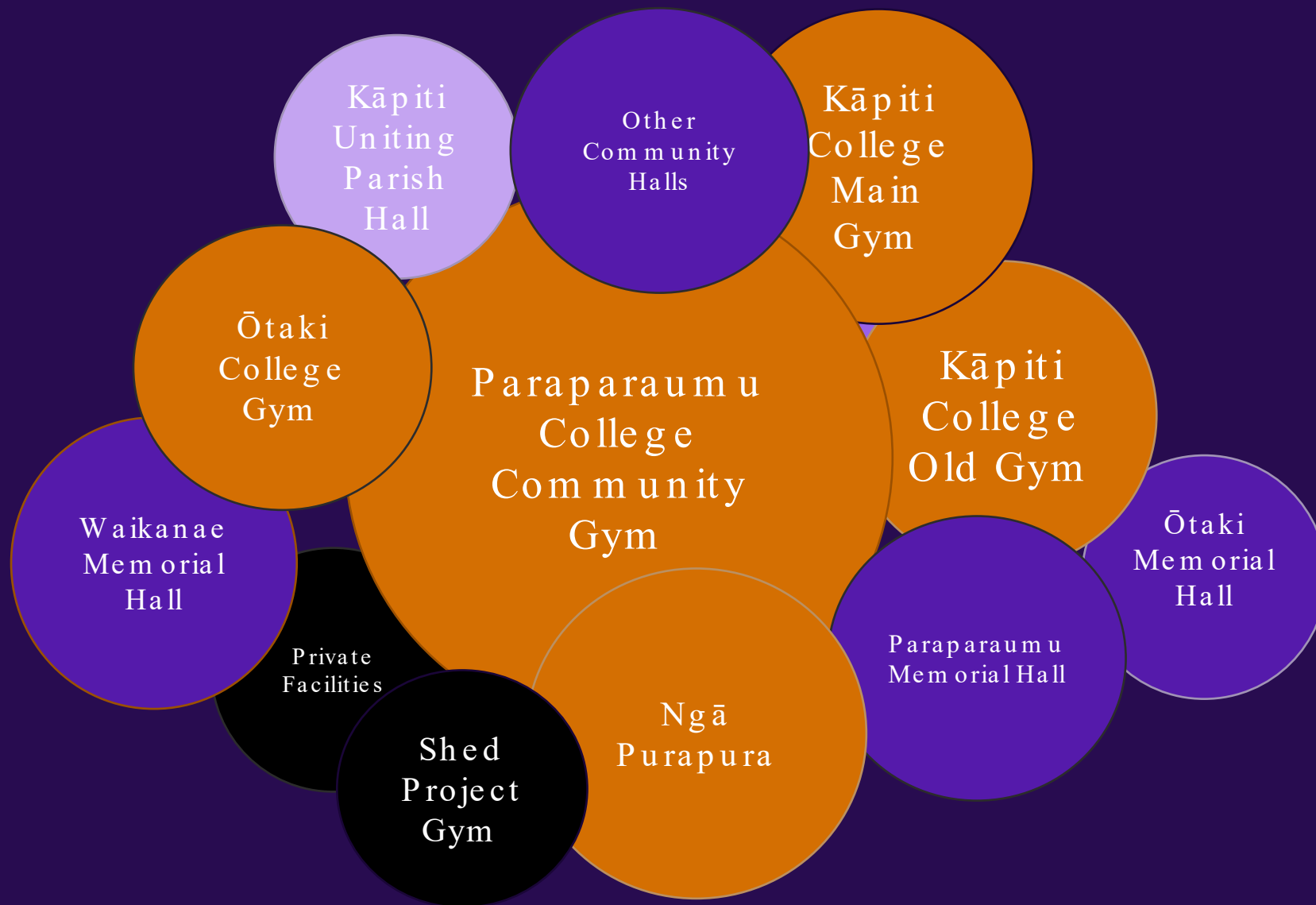
9 May 2024



# Methodology

- Identify current network
- Identify current use and demand:
  - Sport NZ guidance
  - Current population/ Projections
  - Stakeholder engagement - Facility owners/ users
- Consider potential sites – pros and cons
- Identify preferred site

# Broader Network



# Preliminary Indoor Court Needs

	2023	2043
Expected population	59,369	80,477
Number of courts available	4.25	4.25
Number of courts required (1:7,800)	7.5	10
Deficit of courts	-3.25	-5.75

# Preferred Site



## Pros

Council owned site

Close to other community facilities – pool/library

Close to the town centre

Close to public transport

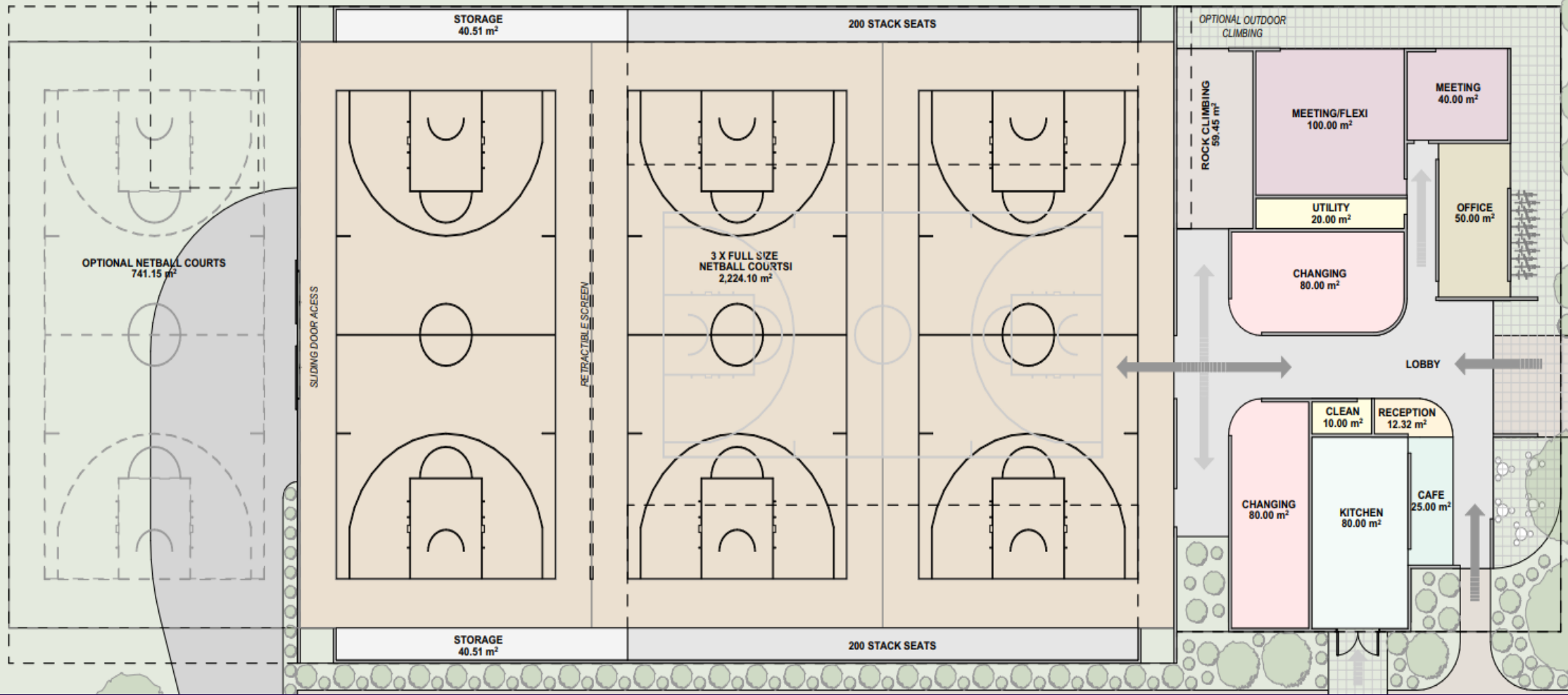
Close to potential user base

Potential for future community centre development alignment

Council may be able to part fund through developer's contribution



POTENTIAL SERVICE  
ACCESS ROAD











00:26

4

8



orts

