

The background of the slide features a close-up of an olive branch with several green olives. The branch is positioned diagonally across the frame. In the center, the sun is shining brightly, creating a warm, golden glow and a lens flare effect that illuminates the scene. The overall aesthetic is natural and serene.

REPRESENTATION REVIEW 2024

FORMAL CONSULTATION FEEDBACK

Briefing – 8 October 2024

Purpose of session

- Provide a summary and analysis of the consultation feedback
- Discuss possible alternative representation arrangement options to be considered as a result of consultation feedback
- Discuss next steps

○ Mayor: 1

○ Districtwide Councillors: 3

● Ōtaki Ward

Ward Councillor: 1
Population: 9,320*
Avg. per Councillor: 9,320
+ or - variance: 11.65% (underrepresented)

● Waikanae Ward

Ward Councillors: 2
Population: 15,650*
Avg. per Councillor: 7,825
+ or - variance: -6.26% (overrepresented)

● Paraparaumu Ward

Ward Councillors: 3
Population: 24,700*
Avg. per Councillor: 8,233
+ or - variance: -1.36% (overrepresented)

● Paekākāriki-Raumati Ward

Ward Councillor: 1
Population: 8,760*
Avg. per Councillor: 8,760
+ or - variance: 4.95% (underrepresented)

*Estimate as of 30 June 2023 (based of 2018 census)

● Current Community Board boundaries:

Ōtaki Community Board

4 community board members,
plus 1 ward Councillor

Raumati Community Board

4 community board members,
plus 1 ward Councillor

Paekākāriki Community Board

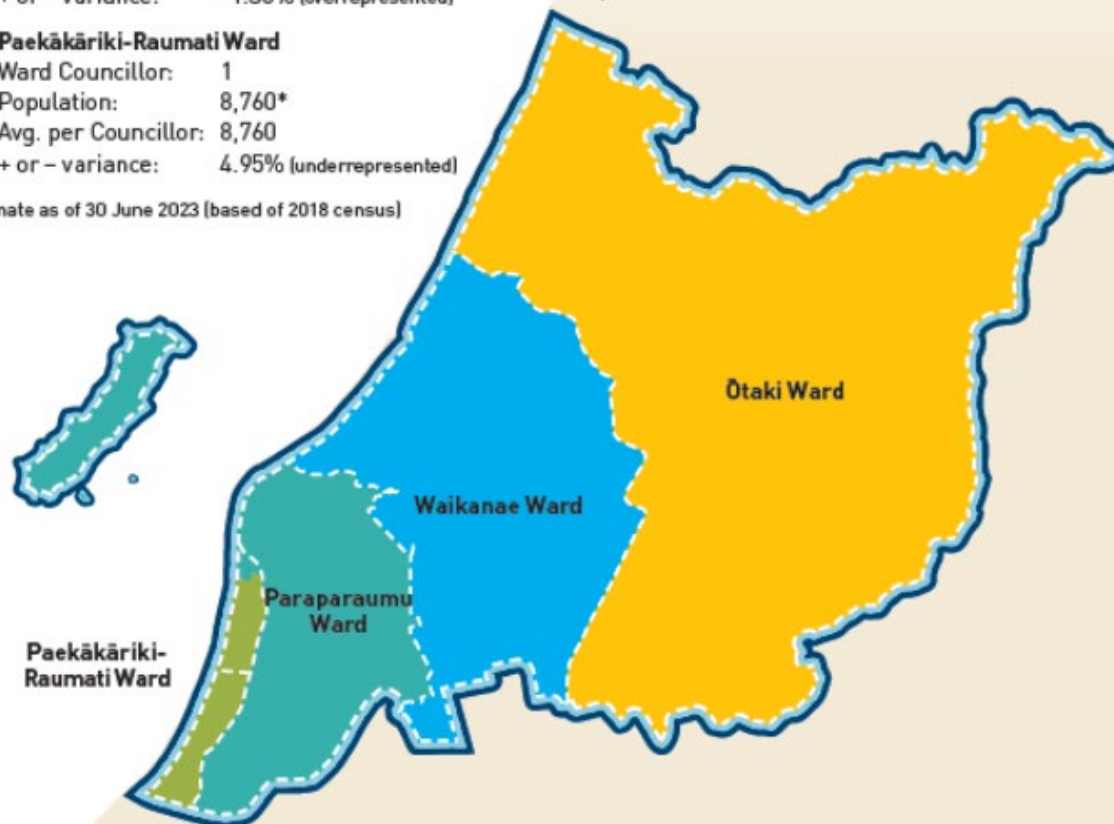
4 community board members,
plus 1 ward Councillor

Waikanae Community Board

4 community board members,
plus 1 of the 2 ward Councillors

Paraparaumu Community Board

4 community board members,
plus 2 of the 3 ward Councillors



Recap of Initial Proposal

Replace one districtwide Councillor with a Māori ward Councillor and retain the same number of Councillors around the Council table.

1 Mayor

10 councillors



- 2 districtwide Councillors
- 7 general ward Councillors
- 1 Māori ward Councillor
– covering the entire district

20 Community Board Members

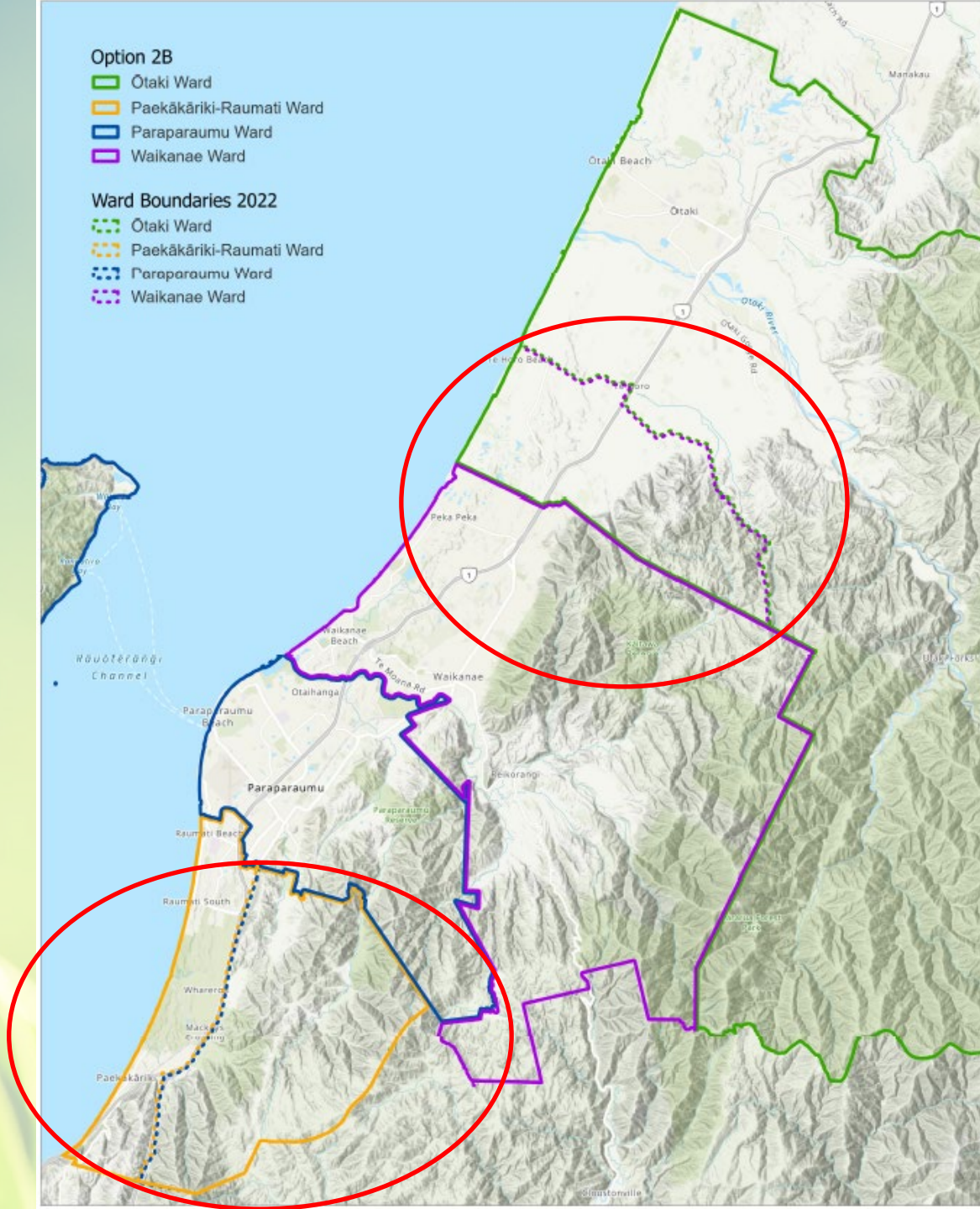
- Retain the same number of councillors:
10 councillors plus the Mayor
 - Two district wide councillors
 - Seven general ward councillors
 - One Māori ward councillor
- Māori ward named ‘Kāpiti Coast Māori Ward’ with the boundaries aligning with the district’s boundaries
- Five community boards consisting of four elected representative plus a specified number of councillors appointed to the community boards
- Adjusted ward and community board boundaries at Te Horo and Emerald Glen/Valley Road

Option 2B

- Ötaki Ward
- Paekākāriki-Raumati Ward
- Paraparaumu Ward
- Waikanae Ward

Ward Boundaries 2022

- Ötaki Ward
- Paekākāriki-Raumati Ward
- Paraparaumu Ward
- Waikanae Ward



Population Data

(Initial Proposal – move Ōtaki-Waikanae boundary south to Te Hapua Road)

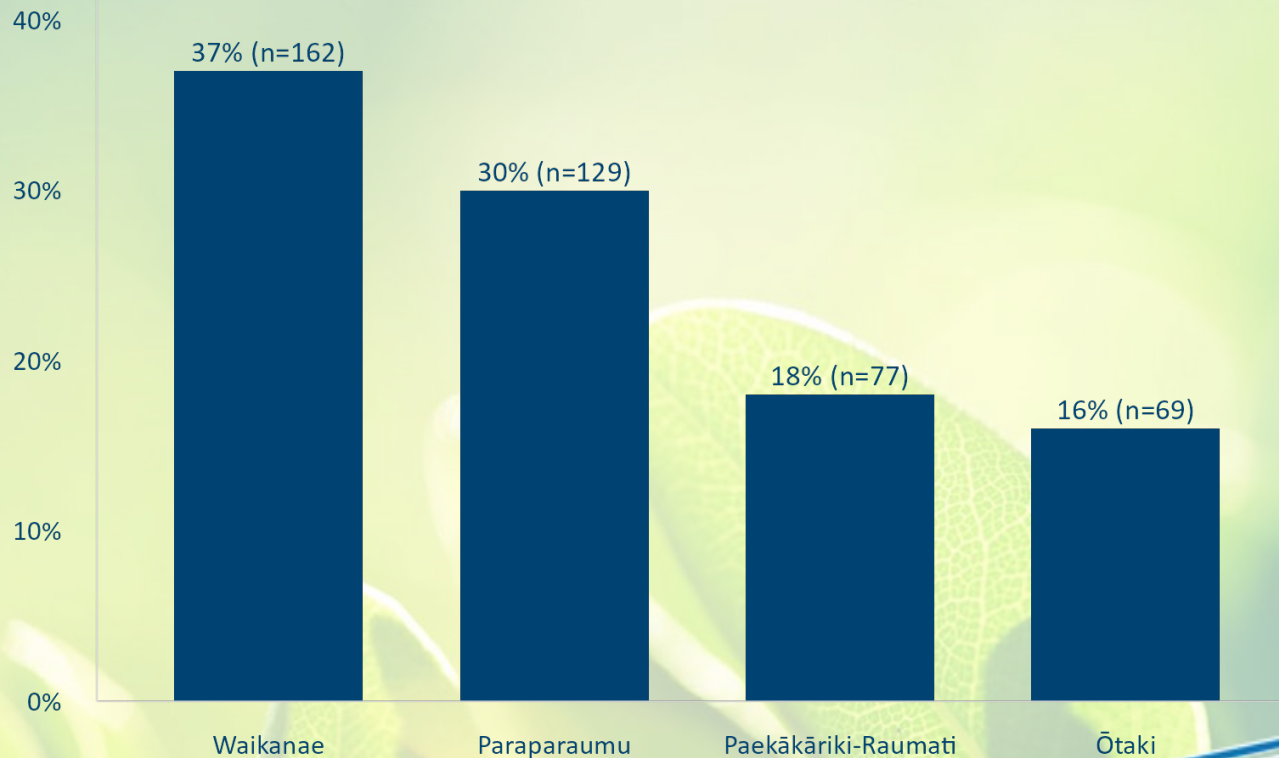
Ward	Māori Electoral Population	General Electoral Population	Members	Population per Member	Difference from Quota (7,644)	% Difference from Quota
Ōtaki General Ward	N/A	8,510	1	8,510	866	11.32% (underrepresented)
Paraparaumu General Ward	N/A	22,900	3	7,633	-11	-0.14% (overrepresented)
Waikanae General Ward	N/A	13,800	2	6,900	-744	-9.74% (overrepresented)
Paekākāriki-Raumati General Ward	N/A	8,300	1	8,300	656	8.58% (underrepresented)
Kāpiti Coast Māori Ward	4,930	N/A	1	4,930	N/A	The quota requirement does not apply to the Māori ward.
District Total	4,930 (Māori electoral population) + 53,510 (General electoral population) = 58,440					

Questions we asked

- Whether the community agreed with the number of councillors remaining at 10 (seven general ward councillors, two districtwide councillors and one Māori ward councillor) plus the Mayor?
- What changes the community would like to make to the initial proposal?
- Whether the community agreed with keeping the number of community boards to five (represented by four elected members each and a specified number of councillors appointed back)?
- Whether the community agreed with the proposed boundary adjustments at Te Horo (Ōtaki and Waikanae Ward and Community Board boundary) and Emerald Glen/Valley Road (Paraparaumu and Paekākāriki-Raumati Ward and Paraparaumu and Paekākāriki Community Board boundary)?
- All questions had a commentary (tell us more) section.

Respondent Profile

- 442 submissions received in total
- 8 submissions received via email/letter
- 10 submitters presented to Council on 24 September 2024



Note: Not all respondents confirmed what ward they live in.

Main feedback points: Council and Community Board Structure

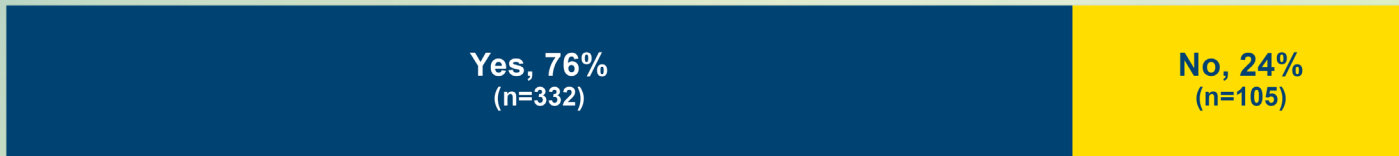
- Majority of the respondents (76%) agree that the proposed structure of 10 councillors and the Mayor provide fair and effective representation
- However, over half of respondents (55%) disagree with the proposed Council structure of having two districtwide, seven general ward and one Māori ward councillors
- Majority of respondents (80%) supportive of proposed community board arrangements

Main feedback points: Community Boards and Boundaries

- Majority of respondents supportive of proposed ward and community board boundary changes
- A targeted mail drop to communities affected by the boundary changes was completed. Submissions received from affected respondents have been separately analysed and identified that:
 - the affected residents at Emerald Glen/Valley Road are overall supportive (67%) of the proposed boundary changes
 - the affected residents at Te Horo are not supportive (71%) of the proposed boundary changes (even though the majority of respondents overall are) and would prefer the status quo or that the boundary be moved North to Ōtaki river

Feedback on Numbers and Structure

Do you agree with keeping the number of councillors to 10?



Do you agree with having seven ward councillors, two districtwide councillors and one Māori ward councillor?



The majority of respondents support keeping the number of councillors to 10. However, over half of respondents disagree with the proposed structure of two districtwide, seven general ward and one Māori ward councillors plus the Mayor.

Feedback on number of Councillors

Do you agree with keeping the number of councillors to 10?



Size of Council provides appropriate and effective representation



Concerns about increasing number means higher costs and is inefficient



Concerns that maintaining 10 councillors increases spending and that fewer councillors could improve efficiency and reduce expenses



Calls for removing/reducing districtwide councillors and addressing underrepresentation

Feedback on Council Structure

Do you agree with having seven ward councillors, two districtwide councillors and one Māori ward councillor?



Structure provides fair and effective representation



Preference to reduce overall numbers to streamline Council and improve efficiency and save costs



Concerns about Council ignoring majority opinions, especially in relation to the Māori ward establishment



Suggestions to either reduce or remove districtwide councillors and increase ward councillor representation, especially in underrepresented wards



Suggestions to increase districtwide representation or retain status quo, without the addition of a Māori ward councillor

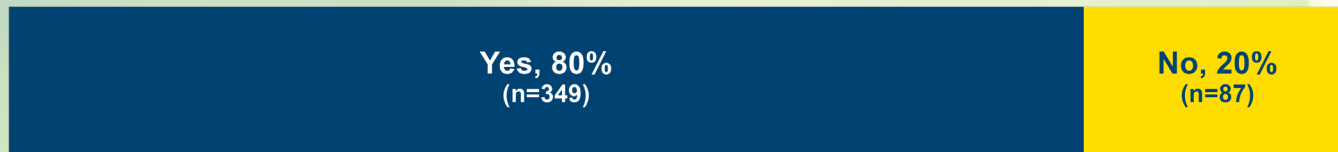
Feedback on Council Structure

If you did not agree to 1 or 2, what changes to the initial proposed arrangements would you make?

- Maintain status quo and opposition to Māori ward establishment
- Reduce number or remove districtwide councillors
- Reduce or remove ward councillors (i.e. only one councillor per ward or fully districtwide system)
- Paekākāriki-Raumati ward and Ōtaki Ward underrepresented
- Reduce overall number of councillors to reduce costs and increase decision-making efficiency
- Concerns about Council's fiscal management and decision-making

Feedback on Community Boards

Do you agree with keeping the number and membership of community boards to five represented by four elected representatives each, and retaining the number of councillors appointed to community board?



Status quo provides fair and effective representation – community boards important to represent localities and no change needed



Include Māori representation on community boards



Community boards not required or number and membership should be reduced or fully remove community boards



Remove councillor appointments from community boards










Consider re-aligning community boards

Feedback on Te Horo Boundary

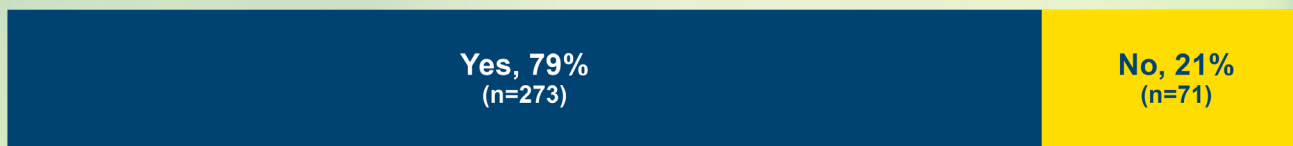
Do you agree with the proposed general ward and community board boundary lines for Ōtaki and Waikanae?









-  Support for unifying Ōtaki, Te Horo and Te Horo Beach to better reflect communities of interest
-  Proposed boundaries align with school zones, community assets and iwi boundaries
-  Belief that Te Horo aligns more naturally with Ōtaki
-  Preference for status-quo – change unnecessary and costly
-  Belief that Te Horo more aligned with Waikanae
-  Concerns about fair representation considering the size of the proposed Ōtaki Ward
-  Suggestions to use Ōtaki river as an alternative boundary

Feedback on Emerald Glen/Valley Road Boundary

Do you agree with the proposed general ward boundary line for Paekākāriki-Raumati and Paraparaumu, and the Paekākāriki and Paraparaumu community boards?



-  Provides fair and effective representation and better aligns with communities of interest
-  Belief that Emerald Glen and Waterfall Road aligns more naturally with Paekākāriki
-  Support for a combined Paekākāriki – Raumati ward and community board
-  No need for change (or lack of rationale for change) and preference for status quo
-  Concerns about funding allocation
-  Suggestions to include Raumati in Paraparaumu Ward instead

What do the residents affected by the boundary changes think?

Emerald Glen/Valley Road boundary changes:

- Three respondents identified as being directly affected by the boundary changes and two out of three (67%) respondents support the proposed boundary adjustment

Te Horo boundary changes:

- 21 respondents identified as being directly affected by the boundary changes
- 6 (29%) respondents support the proposed boundary adjustment
- 15 (71%) respondents commented that they would either prefer that the boundary be moved north to Ōtaki River or that the status quo be maintained

General Feedback

Is there anything else you would like to say to guide councillors' thinking on the representation review?

- Calls for Council to listen to the majority views and make decisions accordingly
- Advocacy for reduced Council spending, focusing on core services and infrastructure
- Concerns about reliability and access to relevant information
- Suggestions for alternative Council structure, number of councillors and ward boundaries
- Call for increased councillor visibility in the community

Submissions Hearing

- Te Horo boundary changes – status quo or move north to Ōtaki River
- Community Boards – combine Paekākāriki and Raumati to strengthen community board influence and align community board and ward boundaries
- Alternative Council structures – more wards and ward councillors
- Discussion around Māori ward establishment – both support and opposition
- Suggestion to explore refusal to hold referendum

Mana Whenua Views

- Are supportive of the proposed name for the Māori Ward if macron removed from 'Kāpiti' – so ward name would be **'Kapiti Coast Māori Ward'**
- Are supportive of the proposed boundary changes for the Ōtaki and Waikanae Wards and Community Boards

What do the results mean?

- Support for number of councillors
- Support for proposed community board arrangements
- Support for proposed boundary alterations at Emerald Glen/Valley Road
- Councillors to consider whether:
 - Structure of two districtwide, seven general ward and one Māori ward councillors should be amended in final proposal
 - Māori ward name should be amended to Kapiti Coast Māori Ward in final proposal
 - Boundary at Te Horo should be amended in final proposal

Alternative Options to Initial Proposal

Name of Māori Ward:

- Name of Māori ward: Kāpiti Coast Māori Ward
OR
- Name of Māori ward changed as suggested: Kapiti Coast Māori Ward

Boundary between Ōtaki and Waikanae Wards and Community Boards

- Leave boundary as is (compliant with +/-10% rule and preference of community of interest but splits community)
OR
- Proposal: Move boundary south to Te Hapua Road (non-compliant and not preference of affected community of interest but aligns with mana whenua boundaries and community no longer split)
OR
- Move boundary north to Ōtaki River (non-compliant with +/-10% rule but greater access to funding and community no longer split)



Otaki Beach
Responsible camping site

Arham Care Gardens

Manawatu
Otaki

Manawatu

Otaki

Otaki Racecourse

Talipōmā Nursery

MANAWATU-WHANGANUI

WELLINGTON

MANAWATU-WHANGANUI

WELLINGTON

St. John's

Te Horo Beach

Te Horo Stamp

Te Horo

Te Horo School

Te Horo Harvest

Kaiahi Pekaia
Cattery & Karihi

Makahuri Co-Housing
Community

Kaiahi Gaming
Adventures

Sudbury

Lavender Creek Farm

Pokomey BlueFlora

Te Horo Beach

Peka Peka
Beach

Peka Peka

Waikanae Vintage

Hamilton Gardens
Gardenworld

Pharos Reserve

Waikanae
Nature Reserve

Waikanae
Beach

Waikanae
Beach

Waikanae Golf Club

Swimming Pool

Charity Building

Mangrove Walkway

Mangrove Road
north car park

Market Ready

Nature Retreat
(Bhakti Lounge)

Road Flower Co

The Pons Reserve

Waikanae River
Lodge and Retreat

Waiata Flat
Historical Reserve

Population Data

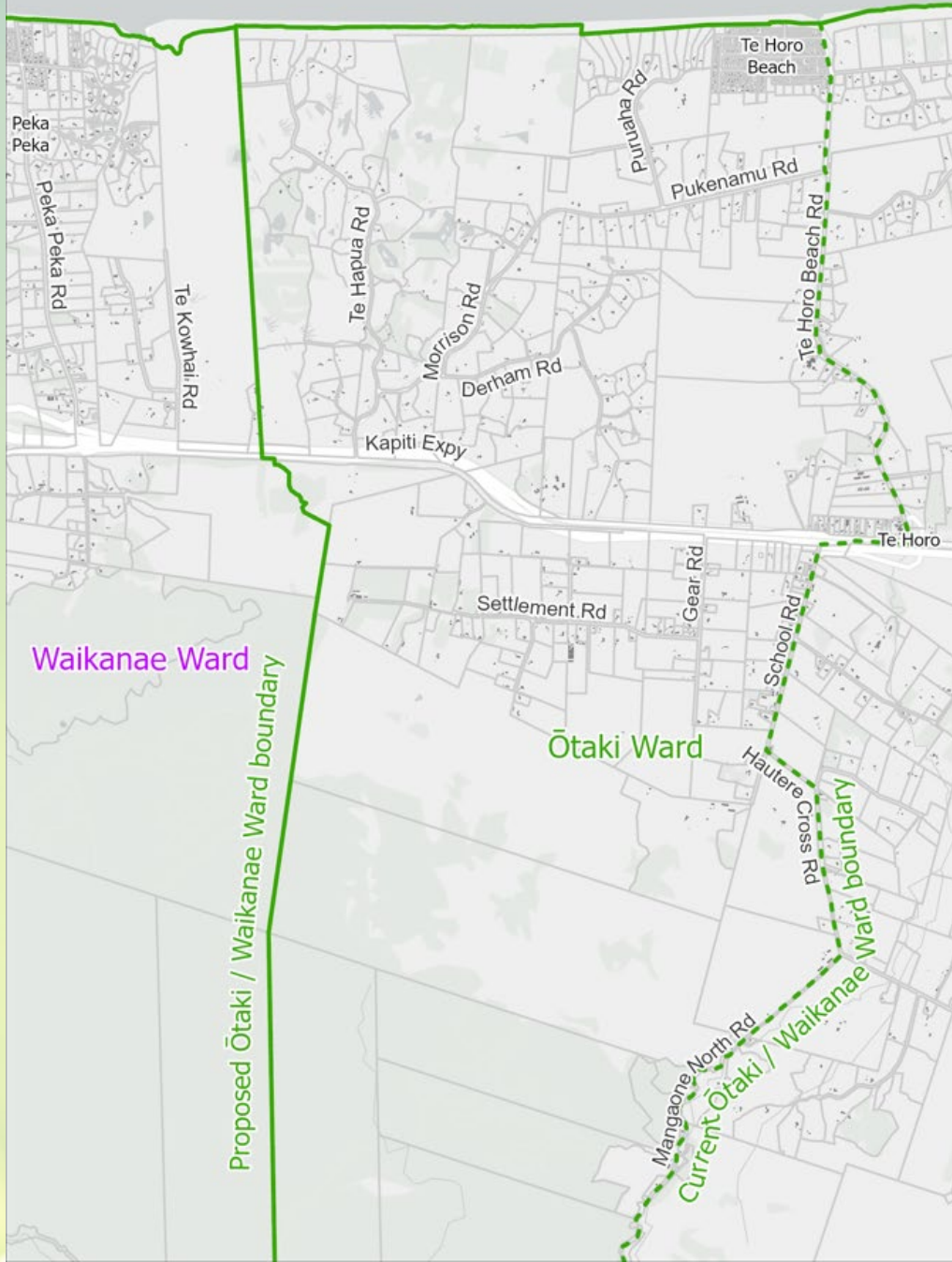
(no boundary changes for Ōtaki-Waikanae Wards)

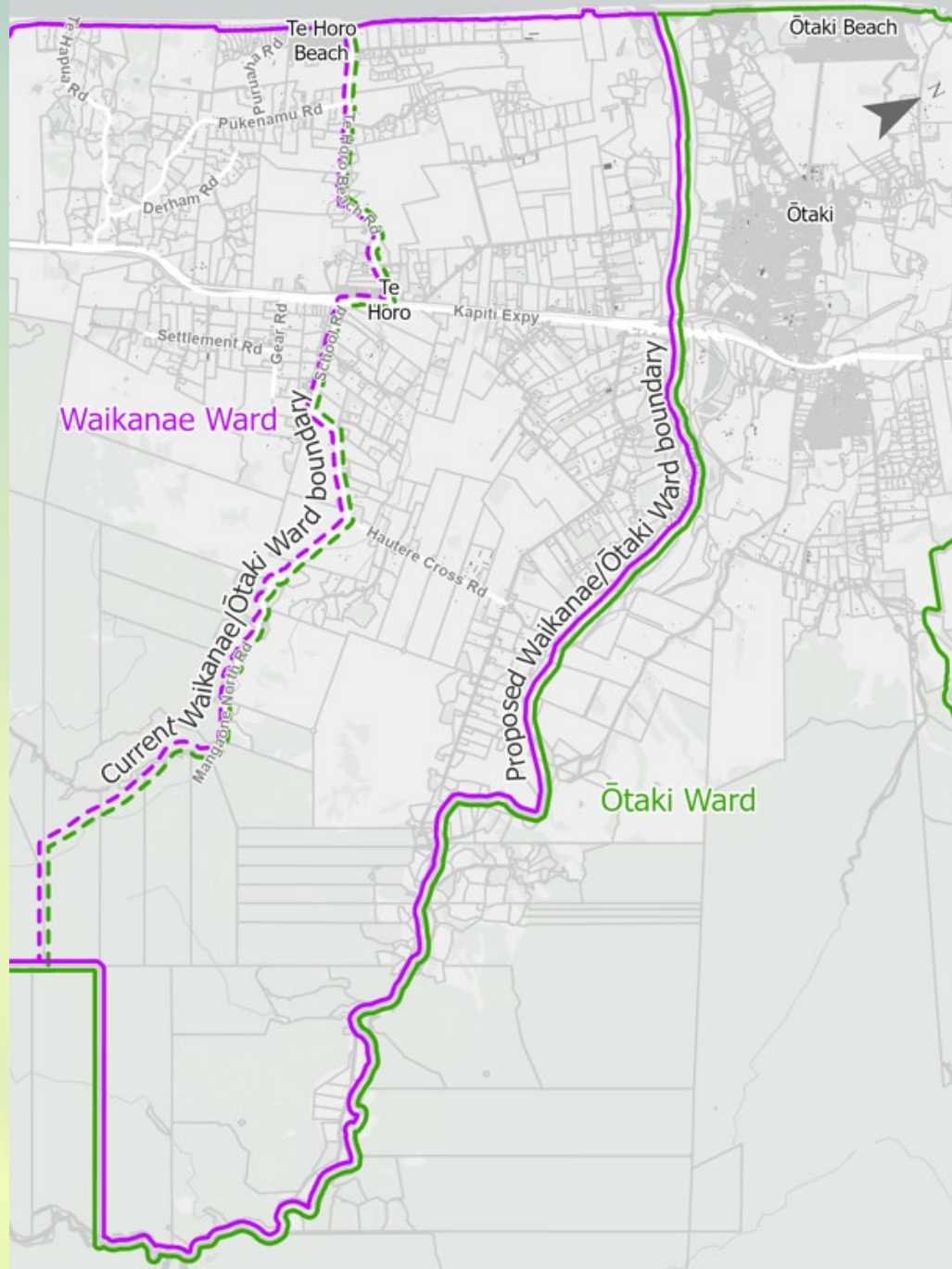
Ward	Māori Electoral Population	General Electoral Population	Members	Population per Member	Difference from Quota (7651)	% Difference from Quota
Ōtaki General Ward	N/A	7,410	1	7,410	-241	-3.16% (overrepresented)
Paraparaumu General Ward	N/A	22,900	3	7,633	-18	-0.24% (overrepresented)
Waikanae General Ward	N/A	14,950	2	7,475	-176	-2.31% (overrepresented)
Paekākāriki-Raumati General Ward	N/A	8,300	1	8,300	649	8.48% (underrepresented)
Kāpiti Coast Māori Ward	4,930	N/A	1	4,930	N/A	The quota requirement does not apply to the Māori ward.
District Total	4,930 (Māori electoral population) + 53,560 (General electoral population) = 58,490					

Population Data

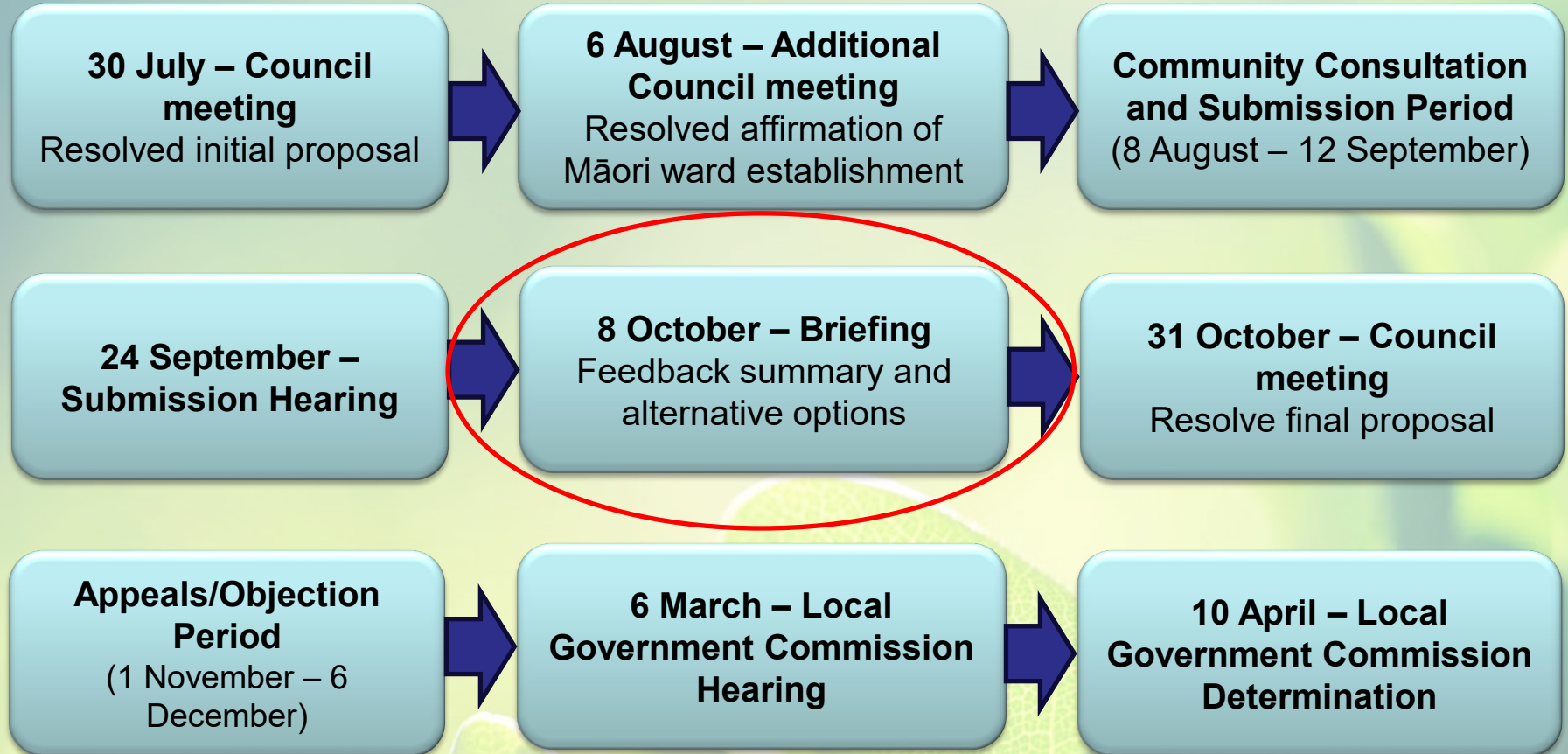
(move Ōtaki-Waikanae boundary north to Ōtaki river)

Ward	Māori Electoral Population	General Electoral Population	Members	Population per Member	Difference from Quota (7,651)	% Difference from Quota
Ōtaki General Ward	N/A	6,310	1	6,310	-1,341	-17.53% (overrepresented)
Paraparaumu General Ward	N/A	22,900	3	7,633	-18	-0.24% (overrepresented)
Waikanae General Ward	N/A	16,050	2	8,025	374	4.88% (underrepresented)
Paekākāriki-Raumati General Ward	N/A	8,300	1	8,300	649	8.48% (underrepresented)
Kāpiti Coast Māori Ward	4,930	N/A	1	4,930	N/A	The quota requirement does not apply to the Māori ward.
District Total	4,930 (Māori electoral population) + 53,560 (General electoral population) = 58,490					

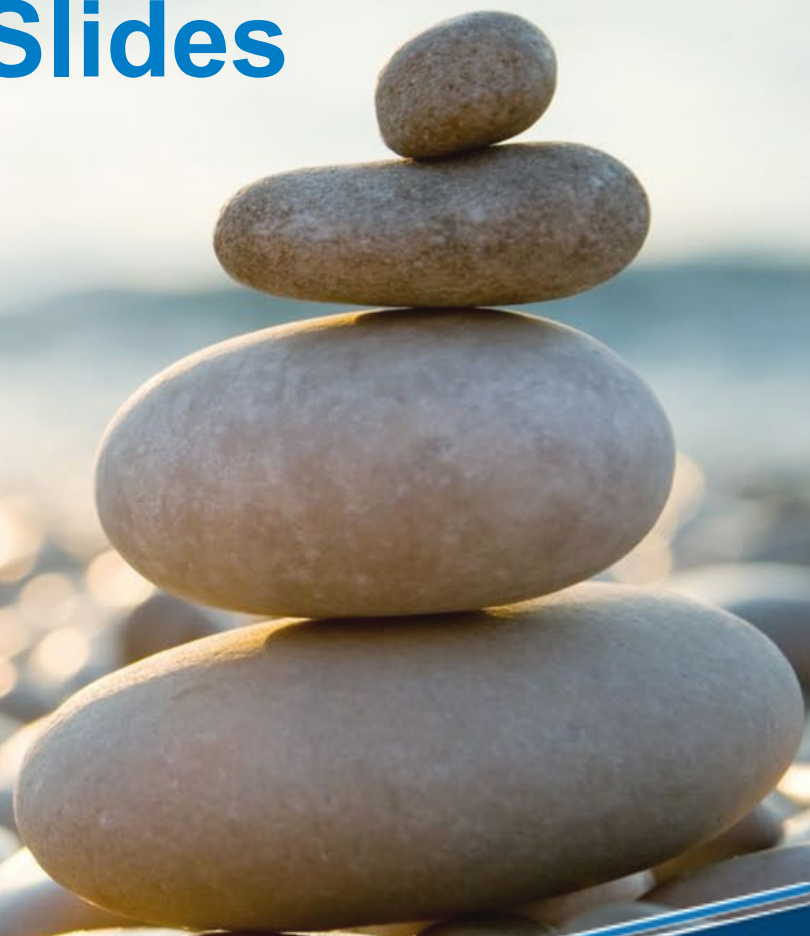




Next steps

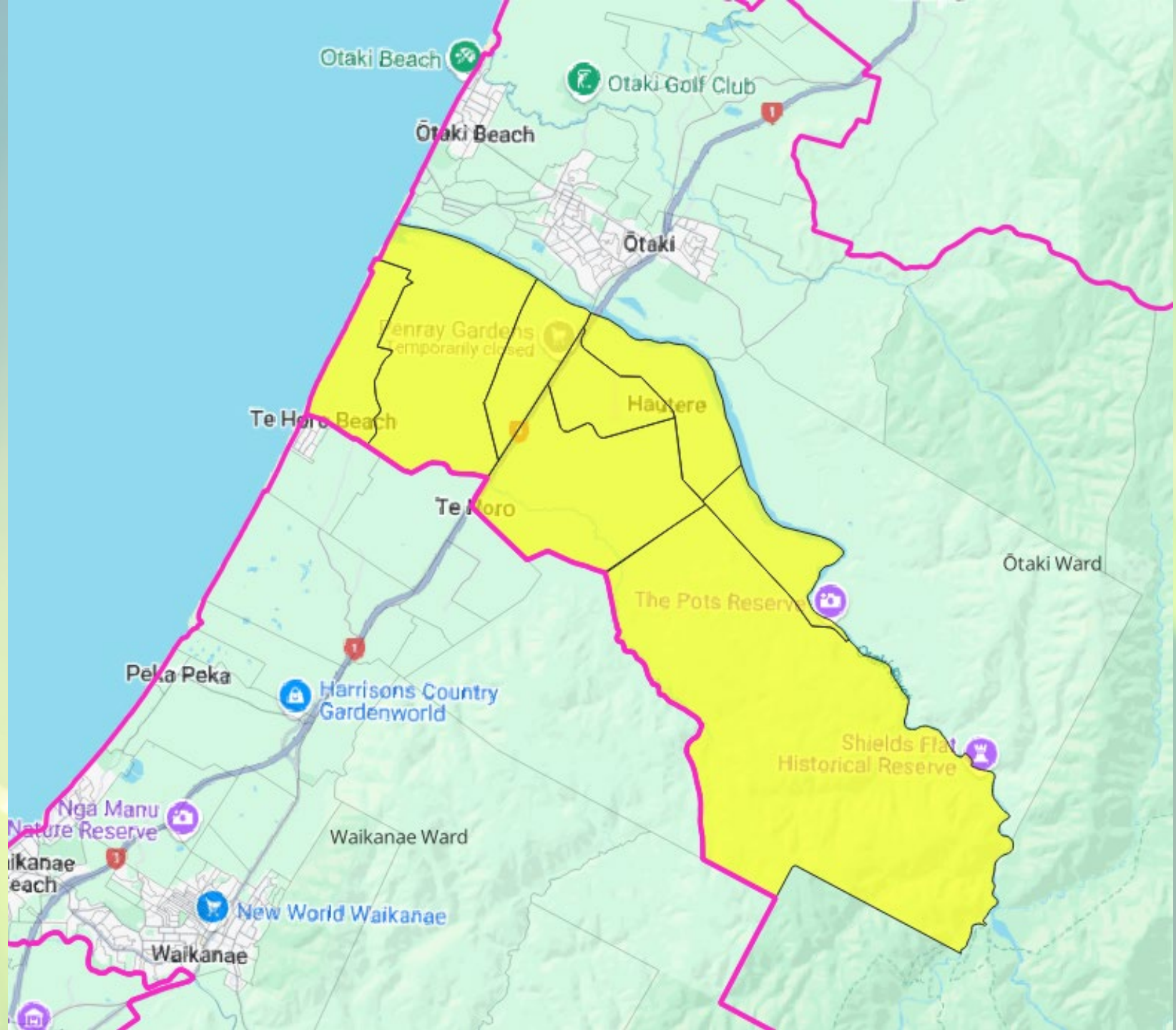


Additional Slides



Population Data (no boundary changes)

Ward	Māori Electoral Population	General Electoral Population	Members	Population per Member	Difference from Quota (7,649)	% Difference from Quota
Ōtaki General Ward	N/A	7,380	1	7,380	-269	-3.51% (overrepresented)
Paraparaumu General Ward	N/A	23,100	3	7,700	51	0.67% (underrepresented)
Waikanae General Ward	N/A	14,950	2	7,475	-174	-2.27% (overrepresented)
Paekākāriki-Raumati General Ward	N/A	8,110	1	8,110	461	6.03% (underrepresented)
Kāpiti Coast Māori Ward	4,930	N/A	1	4,930	N/A	The quota requirement does not apply to the Māori ward.
District Total	4,930 (Māori electoral population) + 53,540 (General electoral population) = 58,470					



Otaki Beach

Otaki Golf Club

Otaki Beach

Otaki

Penray Gardens
temporarily closed

Te Horo Beach

Hautere

Te Horo

Otaki Ward

The Pots Reserve

Peka Peka

Harrison's Country
Gardenworld

Shields Flat
Historical Reserve

Nga Manu
Nature Reserve

Waikanae Ward

Waikanae
Beach

New World Waikanae

Waikanae