



# Vision Ōtaki

Summary Report

November, 2024

## Vision Ōtaki— Summary Report

### **About PublicVoice**

PublicVoice Limited is a leading research and engagement consultancy headquartered in Wellington, New Zealand. We concentrate on public policy research and consultation, providing services to various local and central government agencies throughout New Zealand. To learn more about our work, please visit [www.publicvoice.co.nz](http://www.publicvoice.co.nz).

<b>Version:</b>	V1.0
<b>Date:</b>	5 November 2024
<b>Author(s):</b>	Jared Bothwell, Dianne Long

# Contents

<b>Contents</b> .....	<b>1</b>
<b>1 Executive summary</b> .....	<b>3</b>
1.1 Why Vision Kāpiti 2060? .....	3
1.2 Overview of Vision Ōtaki engagement and feedback.....	3
1.3 Central Themes.....	6
<b>2 A summary of all feedback on Vision Ōtaki</b> .....	<b>8</b>
2.1 Place.....	9
2.2 People .....	16
2.3 Partnership.....	30
2.4 Comparison of Vision Ōtaki and Vision follow up survey results .....	32
<b>3 Data analysis methodology</b> .....	<b>34</b>
3.1 Survey data analysis.....	34
3.2 Key findings analysis .....	34
3.3 Reporting.....	34
<b>Phase One: Gathering initial views</b> .....	<b>35</b>
<b>4 Vision Ōtaki survey</b> .....	<b>35</b>
4.1 What makes Ōtaki feel like home? .....	36
4.2 What changes do you want to see in our community now? .....	37
4.3 What aspirations do you have for future generations living in our community? .....	40
4.4 How do we improve health and access to services? .....	42
4.5 How do we enjoy and improve our natural spaces? .....	44
4.6 What type of housing do we need? .....	45
4.7 Do we get the education we need here?.....	46
4.8 Can you get where you need to get? What options are missing? .....	47
4.9 Can you get the work or workers you want in Ōtaki? .....	48
4.10 What makes Ōtaki a great place to come to visit?.....	49
4.11 How do we make Ōtaki a great place for businesses and shops?.....	50
4.12 How do we stay safe and recover in an emergency? .....	52
4.13 How do we stay connected — what could we improve? .....	53
4.14 What are the most important places and spaces to protect for the future? .	55
4.15 Is there anything else you'd like to share about Ōtaki's future development that wasn't covered in the survey? .....	56
<b>Phase Two: Testing what we have heard so far</b> .....	<b>58</b>
<b>5 Vision follow up survey</b> .....	<b>58</b>
5.1 Does this reflect what's important to you? .....	58
5.2 Is there anything missing?.....	59
<b>Broader community engagement</b> .....	<b>61</b>
<b>6 Relevant Insights from the Long-Term Plan Process</b> .....	<b>61</b>
6.1 Water Infrastructure .....	61

6.2	Transportation .....	62
6.3	Community Facilities & Economic Development .....	62
6.4	Environmental Concerns .....	62
6.5	Housing & Development .....	62
6.6	Community Engagement & Governance.....	62
6.7	Sports & Recreation.....	62
<b>7</b>	<b>Needs Assessment: Insights from Kāpiti young people .....</b>	<b>63</b>

# 1 Executive summary

## 1.1 Why Vision Kāpiti 2060?

A clear district-wide vision will help guide planning, decision making, programmes, services, and advocacy, for decades to come.

Elected members want to hear from their communities about what matters most, what change people want to see and their aspirations for the future of our district.

The first stage is to develop a Vision for the District and its underlying communities.

This will be followed by two further stages:

- Identifying and testing pathways and priorities for achieving our Vision; and finally;
- Developing a blueprint for action, mapping out our key steps and moves to realise our Vision.

Once complete, the Vision and blueprint will outline what things will be prioritised over the next 30 years (to 2060), and how Council will work with its iwi partners, central and local government, and key stakeholders to achieve our collective Vision.

This process will replace the Local Outcomes Statements developed across the District from 2007 - 2017.

## 1.2 Overview of Vision Ōtaki engagement and feedback

The Ōtaki Community Board has worked to capture feedback from the Ōtaki community to help shape and refine Vision Ōtaki. This has occurred in two phases of engagement.

### Phase One: Gathering initial views

Between August 2023 and February 2024 feedback was captured from local Ōtaki residents through:

- An online survey gathering input from residents, workers and visitors on what makes Ōtaki special, current community needs, and aspirations for the future development of Ōtaki. 202 responses with 825 feedback points
- Feedback at the Ōtaki Engagement Hub as part of Vision Kāpiti. 651 feedback points

This feedback was summarised and presented to local communities for further testing as part of Phase Two. This included a detailed report which summarised feedback from all sources, and feedback received on local survey questions.

## Phase Two: Testing what we have heard so far

From April to July 2024 the summary of feedback from Phase One was shared to test whether what had been captured so far reflected what was important and if there was anything missing.

Further feedback was captured from engagement during this period including:

- An online survey capturing if what is captured so far reflects what's important and if there is anything missing. 10 responses with 30 feedback points
- Feedback at the Ōtaki Engagement Hub. 8 contributors' items of feedback

## Broader community engagement

In addition to the above engagements, the Community Board has sought to engage and seek feedback with local residents through a number of other ways including through:

- Engagement with Ngā Hapu o Ōtaki (Ngā Purapura, wānanga, and rangatahi and kaumatua)
- Engagement with Ōtaki College – including the Manukura GPS group
- Facebook group information and discussion
- Newspaper columns
- Discussion with the local RSA and local businesses
- Discussion with train station commuters
- Workshop sessions and Tsunami walk out exercise
- Information at Ōtaki library and discussion with attendees at library hub sessions.

## Other community feedback included

In addition to feedback on the Vision process, several recent community engagements have provided feedback on what's missing or important for Ōtaki. By incorporating these supplementary sources, we gain a more comprehensive understanding of community priorities and concerns. This multi-faceted approach allows us to identify recurring themes across different engagement processes, providing a robust foundation for Ōtaki's future. This includes:

- Long Term Plan 2024-2034 feedback Key insights identified from the full set of feedback (371 responses with 1,598 feedback points)
- Youth Needs Survey Key insights from 94 responses

The inclusion of Long Term Plan insights offers valuable context on infrastructure priorities, financial considerations, and community initiatives. Meanwhile, the Youth Needs Survey complements other engagement with rangatahi to give crucial

perspectives on the experiences and aspirations of young people in Ōtaki. Together, these additional sources enrich and validate the themes identified in the primary Vision Ōtaki engagement, ensuring a holistic view of community aspirations.

### This report

This report provides an overview of all feedback shaping Vision Ōtaki. This includes:

- Consolidated findings from all feedback relevant to Ōtaki
- A summary of the 'Phase One' local survey results
- A summary of 'Phase Two' feedback on what's important and gaps
- A summary of what we heard from additional information sources, including:
  - Long Term Plan 2024-34 consultation, which covered topics such as infrastructure priorities, financial management, housing, and community initiatives.
  - A Youth Needs Survey, which provided crucial insights into the experiences, challenges and aspirations of local youth.

The analysis of the combined data has been structured using Council's Doughnut Economic Framework. This framework provides a holistic view of the community's well-being, considering social, cultural, environmental, and economic factors. The key findings are organised into themes that align with the various dimensions of the Doughnut Framework.

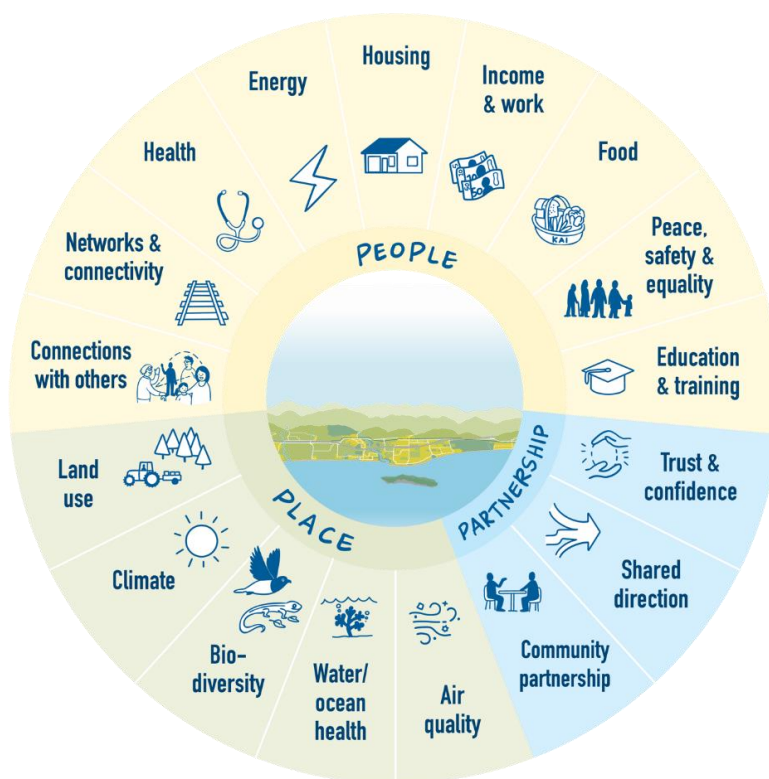


Figure 1: The Doughnut Economic Framework



## 1.3 Central Themes

This section summarises the key findings that emerged from the community engagement process. It highlights the dominant priorities and aspirations expressed by the residents of Ōtaki across various domains of the Doughnut Framework.



**Āhurangi | Climate:** The feedback emphasises a strong focus on climate change mitigation and adaptation, including efficient waste management, recycling systems, and enhanced community understanding of climate issues. There's a particular emphasis on food resilience and sovereignty, with calls for community gardens and support for local growers.



**Aiowhaitika mō te tangata | Peace & Safety:** Residents value Ōtaki's relaxing atmosphere while prioritising improved overall security. Key suggestions include increased police presence, better public space lighting, and clear signage for tsunami safe zones. Animal safety and dog control were also highlighted as important issues.



**Te hononga ki ētahi atu | Connections with others:** The community emphasised developing youth-focused activities and facilities, fostering a strong sense of belonging, and supporting community sports and outdoor activities. There's a desire for more cultural events and promotion of Te Reo Māori within the community.



**Hanga Whare | Housing:** Key priorities include implementing strategies to ensure housing affordability, maintaining affordable rates, and developing various housing types to cater to different demographics. There's a strong focus on balancing intensification with character preservation.



**Hauora | Health:** Residents call for the establishment of local healthcare facilities, improved access to GP and hospital services, extended pharmacy hours, and better support for ambulance services. There's also emphasis on elderly care and dementia services.



**Hauora Awa/Moana | River/Ocean Health:** The community deeply values its proximity to the seaside, beaches, local rivers, and the ocean. There's a strong desire to protect and sustainably manage these natural assets, with particular concern for beach preservation.





**He Waka eke noa/A Shared Waka | Community Partnership:**

Residents envision a thriving, connected community that support one another. There's emphasis on strengthening community input in decision-making processes, improving Council communication, and supporting community organisations and events.



**Konorau Koiora | Biodiversity:** The community prioritises protecting beaches, waterways, and green spaces. There's strong support for visiting local parks and reserves, and appreciation for proximity to nature, mountains, hills, and forests.



**Mātauranga | Education & Training:** Expanding educational opportunities is a key focus, including more courses, new schools and facilities, alternative schooling options, and supporting education providers. There's particular interest in courses that lead to local job opportunities.



**Ngā Hono | Networks & Connectivity:** Residents emphasise extending the public transport network, particularly regular train services to Wellington and Palmerston North. Improving road safety, traffic management, and maintaining cycleways and footpaths are also priorities.



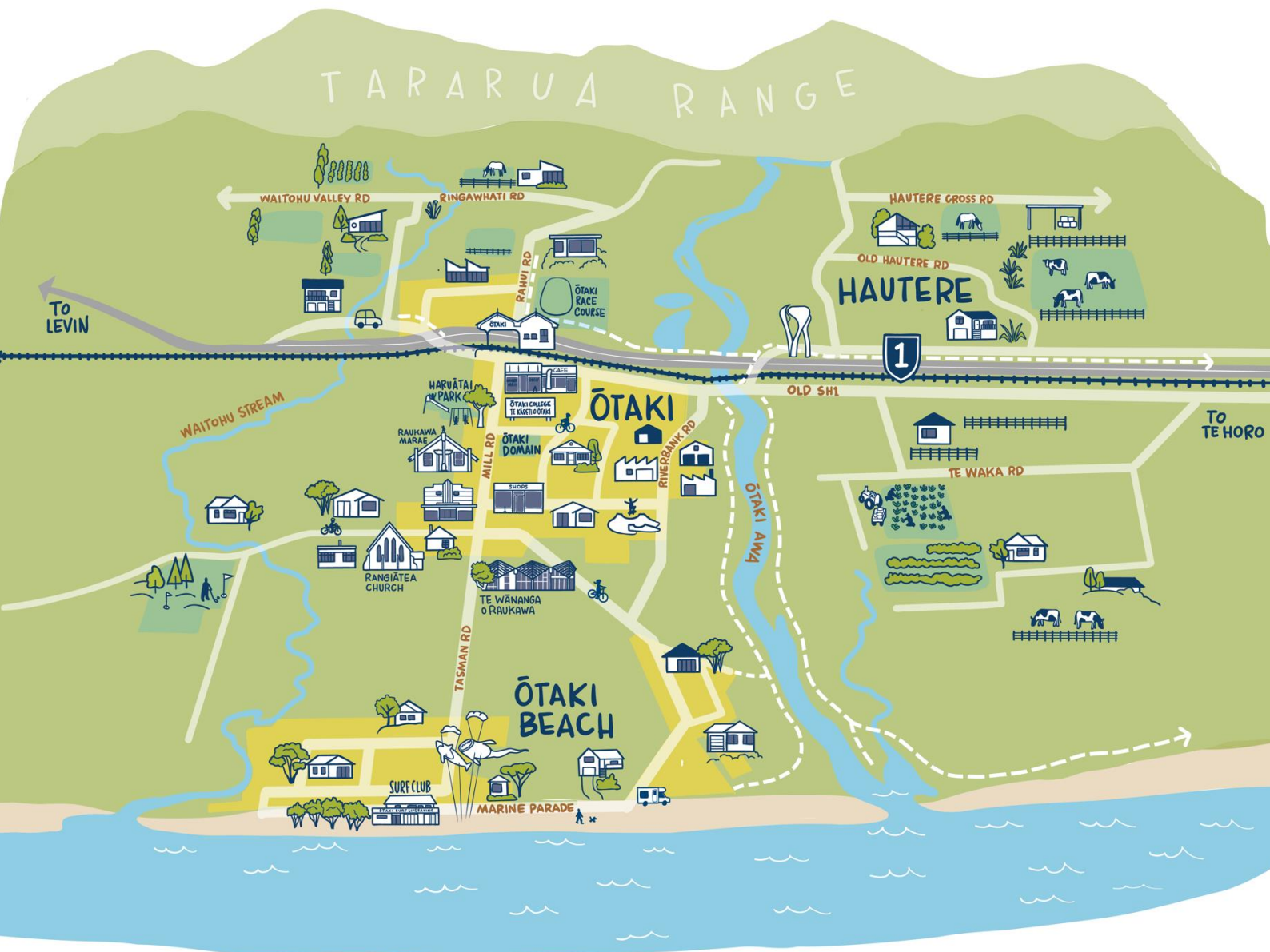
**Ohunga | Income & Work:** The community seeks to encourage investment in local shopping and dining, improve support for local and new businesses, address vacant properties to improve town appeal, and promote employment opportunities. There's a focus on balancing economic growth with maintaining the small-town charm of Ōtaki.



**Whakamahi/Hauora Whenua | Land Use & Quality:** Balancing urban densification with character preservation is a key priority. Residents support reducing urban sprawl and developing infrastructure strategically for new housing areas, while maintaining a village feel.

## 2 A summary of all feedback on Vision Ōtaki

This section provides more detail on views for areas of the Doughnut Framework, representing key needs for the community. In this section, the most common topics that emerged from the community feedback are highlighted for each theme, along with supporting quotes or discussion points. These insights shed light on the Ōtaki community's values, priorities, and concerns, offering valuable guidance for the Kāpiti Coast District Council's decision-making processes and future planning efforts.



## 2.1 Place

Below is a summary of the key findings related to 'Place'.



The feedback related to Āhurangi | Climate highlighted environmental concerns, chiefly climate change adaptation and mitigation. Issues raised included sea level rise, emissions reduction and food resilience. Participants emphasised efficient waste management, enhancing natural spaces and considering various hazards. Despite these worries, residents expressed fondness for the local climate and a desire to enjoy their surroundings.

### The most common themes that emerged from community feedback are:

#### Focus on food resilience

The community feedback emphasises improving local food resilience and sovereignty. Residents desire more community gardens, support for local growers, and better access to affordable, locally grown produce. There's strong interest in food education, preserving cultural food practices, and sustainable agriculture. The community wants to restrict building on arable land, promote market gardening, and maintain the ability to gather wild kai. Overall, there's a clear push for a more self-sufficient, community-centred food system that respects cultural heritage and environmental sustainability.



### Efficient waste management & recycling systems

The community feedback highlights a need for improved waste management. Residents want more rubbish bins in public areas, particularly for dog waste. There's strong support for free access to local recycling and refuse centres to prevent illegal dumping and accumulation of rubbish on private property. The community also desires waste reduction initiatives, such as clothing swap shops and repair cafes. Suggestions include better maintenance of public spaces, including the Main Street and cemetery, to keep areas clean and tidy.

### Focus on climate change & mitigation

The community feedback emphasises climate-conscious urban planning. Residents support the 3-30-300 rule for biodiversity, promoting tree cover and green spaces. There's strong advocacy for sustainable housing, including off-grid options with solar panels and water tanks. The community wants to avoid building in flood-prone areas and zones vulnerable to sea level rise. Improved public transport, particularly regular train services, is seen as essential for reducing carbon emissions. There's also support for community gardens and more frequent emergency evacuation drills.

#### Other themes included:



- Enjoyment of the local climate and weather
- Consideration needed for potential hazards
- Concern regarding sea level rise.

Value our  
productive  
SOILS   
More sustainable  
FOOD development







## Hauora Awa/Moana River/Ocean

The feedback related to Hauora Awa/Moana | River/Ocean highlighted the area's coastal and riverine assets. Residents valued their proximity to the seaside, beaches, local rivers and the ocean. However, there was a notable concern about beach preservation, with calls for improved management to protect these natural resources. This suggests a desire to balance the enjoyment of these water-based amenities with their long-term conservation and sustainability.

### The most common themes that emerged from community feedback are:

#### Proximity to seaside & beaches

The community feedback strongly emphasises the importance of the beach to Ōtaki residents. It's frequently described as beautiful and unspoilt, with many valuing its natural state. The beach is seen as a treasured asset, contributing significantly to the town's appeal and quality of life. The beach is also associated with the town's relaxed, welcoming atmosphere and sense of community, playing a key role in local identity and lifestyle.

#### Proximity to local rivers

The community feedback highlights the Ōtaki River as a significant feature of local life. Residents value the river for its natural beauty, recreational opportunities, and cultural importance. It's mentioned alongside the beach as a key element of the identity and appeal of Ōtaki. For many, the river is integral to their sense of home and community, playing a role in both everyday life and cultural heritage.

#### Proximity to the ocean and sea

The community feedback reflects the importance of the sea to Ōtaki residents. The sea is seen as an integral part of the local environment, alongside forests and rivers, contributing to the area's wildlife and natural beauty. For many, it's a key element of their sense of place and identity, with some viewing it as part of their ancestral heritage. The proximity to the sea enhances the relaxed atmosphere that residents value.

#### Other themes included:



- Management needed to protect beaches.



## Konorau Koiora Biodiversity

The feedback related to Konorau Koiora | Biodiversity centred on environmental conservation and green space management. Residents expressed concern over several issues, including the use of Roundup, campfires, insufficient urban shade, and tree lighting costs. There was a strong desire to protect and promote natural assets, including beaches, waterways, and forests. The community called for increased tree planting, green space preservation, and a ban on forestry slash. Residents valued their proximity to nature, mountains, and hills, and enjoyed visiting local parks and reserves. Overall, there was a clear push for a greener Ōtaki, with an emphasis on environmental protection and conservation efforts.

### The most common themes that emerged from community feedback are:

#### Protect beaches, waterways and green Kāpiti

The community feedback strongly emphasises protecting and enhancing the natural environment. There's significant support for preserving beaches and dunes, with calls to restrict vehicle access and create reserves. Residents want to safeguard and improve waterways, particularly the Ōtaki River, ensuring they remain swimmable and ecologically healthy. There's a push for increased tree cover and green spaces, with many supporting the 3-30-300 rule<sup>1</sup> for biodiversity. The community desires sustainable development that balances growth with environmental protection,



including more native plantings and community gardens.

<sup>1</sup> The 3-30-300 rule focuses on the crucial contributions of urban forests and other urban nature to our health and wellbeing. It requires: 3 trees from every home, 30 percent tree canopy cover in every neighbourhood, and

300 metres from the nearest park or green space. (For more information see: <https://iucnurbanalliance.org/promoting-health-and-wellbeing-through-urban-forests-introducing-the-3-30-300-rule/> )

### Promote natural assets

The community feedback highlights abundant natural assets as key attractions for Ōtaki. There's a desire to better promote and develop these assets, including improving beach facilities and enhancing river areas. The community also emphasises the importance of walkways, cycleways and bridleways, suggesting better promotion of routes like the Pipi Trail. Reopening access to Ōtaki Gorge is seen as crucial for showcasing the area's natural beauty.

### Other themes included:



- Concern regarding lack of greening
- Enjoy visiting local parks and reserves
- Proximity to mountains and hills.

### Proximity to nature

The community feedback emphasises a strong connection to the natural environment as a key aspect of life in Ōtaki. Residents value their proximity to diverse landscapes, including forests, rivers, and the sea. There's a deep appreciation for local wildlife and natural rhythms. The community cherishes the ability to easily access and spend time in nature, seeing it as integral to their lifestyle and well-being. This connection to the environment is often linked to a sense of community and a relaxed pace of life, contributing significantly to the identity and appeal of Ōtaki.

We clean & care for our environment







## Whakamahi/Hauora Whenua Land Use & Quality

The feedback related to Whakamahi/Hauora Whenua | Land Use & Quality centred on housing development and urban planning challenges. Residents expressed concerns about high-density housing and intensification, highlighting the need to balance these with preservation of local character. There were worries about urban sprawl and its associated infrastructure requirements. The community also raised issues regarding flood risk in new developments. To address these concerns, suggestions included reducing costs associated with housing development, requiring solar panels on new builds, and improving infrastructure in new housing areas. Overall, the feedback reflected a desire for thoughtful, sustainable urban growth that considers both housing needs and environmental factors.

### The most common themes that emerged from community feedback are:

#### Concern regarding high density housing

The community feedback expressed significant concern about high-density housing developments in Ōtaki. Residents worry that intensification is changing the town's character, particularly the loss of quarter-acre sections. There's apprehension about 'ghettos' forming and a preference for scattered single-housing developments. Many feel that infrastructure and services, especially healthcare, are not keeping pace with population growth from new subdivisions. Some oppose low-income housing projects, fearing negative impacts on the town. Overall, there's a desire to preserve open spaces and restrict housing development to maintain the current character.

#### Infrastructure development for new housing areas

The community feedback emphasises the need for balanced housing development with supporting infrastructure. There's a strong desire for more parks, both small and large, to accompany increased housing. The community wants better connectivity between different parts of Ōtaki, suggesting a coordinated urban design approach. Overall, there's a focus on creating liveable spaces with adequate amenities alongside new housing developments.



### **Balance intensification with character preservation**

The community feedback reflects a strong desire to maintain the character of Ōtaki while managing growth. Residents oppose urban sprawl and overcrowding of small streets, emphasising the importance of infrastructure that aligns with the village feel. There's concern about inappropriate housing developments, particularly near flood-prone areas like the river. Many prefer to preserve the friendly, close-knit community atmosphere. The community suggests stricter control over new developments and businesses, including eateries. There's also interest in repurposing existing spaces, like the racecourse and Byron Browns, rather than building new housing estates.

### **Other key themes included:**



- Reduce costs associated with housing development.



## 2.2 People

Below is a summary of the key findings related to 'People'.



### Aiowhaitika mō te tangata

#### Peace & Safety

The feedback related to Aiowhaitika mō te tangata | Peace & Safety centred on safety and quality of life issues. Whilst residents generally felt the area was safe and valued its relaxing atmosphere, there were calls to improve overall safety and animal control. Suggestions included increased police presence, particularly around freedom camping areas, and improved lighting in public spaces such as courts and the skate park. The need for clearer signage for tsunami safe zones was also highlighted, indicating a desire for better emergency preparedness.

### The most common themes that emerged from community feedback are:

#### Improve safety

The community feedback emphasises a strong desire for enhanced safety measures. Residents express concerns about youth crime, drug issues (particularly P/meth), and burglaries. There's a call for increased police presence and visibility. Road safety is a priority, with requests for better signage and speed control. The

community wants safer public spaces, including well-lit streets and secure parks for children. Addressing roaming dogs is highlighted as a safety concern. There's also a focus on creating a safer environment for diverse groups, including LGBTQ+ individuals.

### Increase police presence

The community feedback strongly emphasises a desire for increased police presence and visibility in Ōtaki. Residents call for more police patrols, including on beaches and designated walks. There's a specific request for 24-hour policing and a local police station. The community wants better law and order, with mentions of addressing youth crime, car thefts, and gang-related issues. Some suggest community officers and anti-gang programmes. There's also a desire for monitored security cameras in town to enhance safety and deter criminal activity.

### Signage for tsunami safe zones needed

The community feedback strongly emphasises the need for improved tsunami safety signage in Ōtaki. There's overwhelming support for implementing a 'blue line' system on roads to mark the edge of tsunami safety zones. Residents also request clear, visible billboards at Ōtaki Beach and in the town, alerting both locals and visitors to tsunami risks. There are calls for easy-to-read signs accompanying the blue lines and informative noticeboards at beach access points providing tsunami advice and evacuation guidance.

### Other themes included:



- Improve animal safety and dog control
- Enjoy the relaxing and peaceful atmosphere
- Night lights needed (at courts, village, skate park).





## Te hononga ki ētahi atu Connections with others

The feedback related to Te hononga ki ētahi atu | Connections with others, highlighted a strong appreciation for small-town character, diversity, and sense of belonging. Residents valued the friendly, welcoming atmosphere and the rustic appeal. There was emphasis on fostering intergenerational connections, supporting Māori culture and heritage, and collaborating with local artists. Concerns were raised about rapid growth and its impact on the town's feel. The community called for improved and inclusive public spaces, recreational facilities, and youth-focused activities. They expressed a desire for more cultural events, sports facilities, and outdoor activities. Accessibility for the elderly and disabled was highlighted. Residents appreciated local events like the Ōtaki Kite Festival and Māoriland Film Festival. Overall, the feedback reflected a desire to maintain the area's unique character whilst enhancing community facilities and fostering inclusivity across all age groups and cultures.

### The most common themes that emerged from community feedback are:

#### Development of youth-focused activities & facilities

The broader Ōtaki community is asking for expanded youth-oriented spaces and activities, including dedicated centres, diverse recreational facilities, and improved sports venues. They suggest after-school programs, job training, and cultural activities through marae and wānanga. The youth of Ōtaki specifically express desire for larger youth-oriented areas, and spaces

designed for teenagers. They feel current facilities mainly cater to children or skaters. Both young people and the wider community emphasise the need for more engaging and supportive environments for young people in the town.

**YOUTH  
CENTRE:**  
Awesome  
hang out  
spaces



### **Thriving connected community, supportive of others**

The broader Ōtaki community emphasises creating a well-connected, inclusive town that maintains its small-town atmosphere while fostering growth. They suggest initiatives like street tea mornings, community cafés, and shared spaces to encourage local interactions. Residents advocate for affordable housing, promotion of Māori culture and te reo, sustainable living, and community events. They see these elements as crucial to a thriving future identity. The youth of Ōtaki specifically express a desire for more opportunities to connect with the wider community, including adults and older youth.

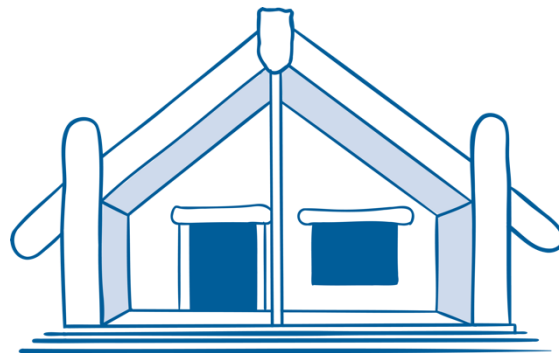
#### **Other themes included:**



- Create and maintain inclusive spaces
- More cultural events, activities and promotion
- Support for community sports and outdoor activities.

### **Sense of belonging In the community**

The community feedback strongly emphasises a deep-rooted sense of belonging in Ōtaki. Residents value the strong community connections, describing a 'whānau vibe' and neighbourliness. The small-town feel is cherished, with many appreciating familiar faces and friendly locals. There's a strong emphasis on cultural identity, particularly Māori culture and education. Overall, Ōtaki is portrayed as a place with a warm, inclusive atmosphere.



## **Hanga Whare Housing**

The feedback related to Hanga Whare | Housing, revealed a complex set of housing priorities and concerns. There was a call to balance housing intensification with character preservation, whilst addressing urban sprawl. Residents emphasised the need for diverse housing options, including retirement homes, social housing, and homes for younger people. Affordability was a key issue, with suggestions to reduce development costs, maintain affordable rates, and ensure empty houses are utilised. Some supported increasing housing supply and streamlining regulatory processes, whilst others opposed further development. There were concerns about high-density housing and its impact on local character. The community stressed the importance of accessibility for the elderly and called for long-term rental options. Climate change adaptation was highlighted as a consideration in housing development. Overall, the feedback reflected a desire for a balanced approach to housing that addresses affordability, accessibility, and sustainability whilst preserving community character.

### **The most common themes that emerged from community feedback are:**

#### **Strategies to ensure housing is affordable**

The community feedback emphasises a strong need for affordable housing strategies. Suggestions include increasing council or government-owned rental properties, encouraging off-grid housing with solar panels, and allowing additional dwellings on existing properties without excessive fees. There's support for social housing scattered throughout the area to avoid creating 'ghettos'. Residents advocate for prioritising local people over holiday homes, with some suggesting regulations on Airbnb-style rentals. Many desire housing options

that cater to all ages, incomes, and lifestyles, including affordable homes for larger whānau and students.





### Development of various housing types & sizes

The community feedback emphasises a desire for diverse housing options to cater to different demographics. There's strong support for intergenerational and multi-generational living, with calls for less regulation to enable this on single titles. Residents want a mix of family homes, housing for older people, and options for young professionals. Many advocate for standalone houses with at least three bedrooms. There's also a focus on accessible housing design, particularly for the ageing population. Sustainable public housing of various sizes is suggested, with emphasis on robust construction and integrated amenities.

### Maintain affordable rates

The community feedback emphasises a strong desire for stable and affordable rates. Residents express concern about potential rate increases, particularly for initiatives they feel haven't been adequately mandated by ratepayers. There's a call for the Council to focus on essential projects and infrastructure maintenance, rather than 'vanity' projects, especially during economic downturns. Some suggest using any rate surplus to pay down debt rather than taking on new projects. There's also a request for clearer communication about how rates are spent and a desire for the Council to prioritise what the majority of residents need and want.

### Other themes included:



- Focus on housing development
- Development of housing standards
- Develop more social housing.





The feedback related to Hauora | Health highlighted a strong desire for improved healthcare access and facilities. Key priorities included better access to GP services, hospitals, mental health support, and pharmacies. There was emphasis on enhancing elderly care, particularly dementia services, and increasing home support. Residents called for improved emergency care and ambulance services. The community also stressed the importance of preventative measures, including education on healthy living, support for recreational activities, and reducing fast food outlets. There were suggestions to establish local healthcare facilities and mobile health clinics. Engagement with Māori communities on health issues was highlighted. Overall, the feedback reflected a comprehensive approach to community health, balancing medical services with wellness initiatives and community facilities.

### **The most common themes that emerged from community feedback are:**

#### **Establishment of local healthcare facilities**

The community feedback strongly emphasises the need for improved and expanded healthcare services. Residents call for additional medical centres, including a Māori health provider with multiple GPs. There's a desire for a comprehensive health hub offering pharmacy, radiology, and specialist services. Many highlight the need for better mental health support and addiction services. Extended hours for existing facilities, including weekend pharmacy access, are requested. Some suggest mobile health clinics to address capacity

issues. Overall, there's a clear demand for more accessible, diverse, and locally based healthcare options to meet the growing community's needs.



### Improve access to GP services

The community feedback strongly emphasises the need for improved GP access. Residents call for additional medical centres to meet growing demand, with many reporting long wait times for appointments. There's a desire for extended hours, including after-work, weekend, and urgent care services. Some suggest introducing new service providers to offer more choice and reduce pressure on existing facilities. The community wants local access to specialist services to avoid travelling out of town. There's also a call for more Māori health practitioners and culturally appropriate care options.

### Improve access to hospital services

The community feedback strongly emphasises the need for better hospital access. Many residents call for a new hospital on the Kāpiti Coast, citing the growing population and demographics. There's frustration about being between Wellington and Palmerston North hospitals, with calls for consistent access to both. Some suggest upgrading Levin Hospital to reduce travel to larger cities. Some residents want Ōtaki to be included in Wellington's health region, with access to Wellington Free Ambulance. There are also calls for satellite day hospital services for assessments and minor surgeries locally.

### Other themes included:

- Policies to attract and retain medical professionals
- Improve access to pharmacies
- Public parks, pools, community hubs and gardens etc.





## Mātauranga Education & Training

The feedback related to Mātauranga | Education & Training emphasised a desire for diverse educational opportunities. There was strong support for alternative schooling options, adult education programmes, and apprenticeship pathways. Residents called for more educational facilities, including new schools, whilst stressing the importance of small classroom sizes. Specific educational focuses included environmental education, civics, health and fitness, and Te Reo Māori. There was interest in developing history trails and providing courses to enhance employability. Technical education was highlighted as a priority. The community also expressed a need for education around housing issues. Many want more Te Reo Māori education, both in schools and the wider community. The feedback highlights interest in courses on sustainable agriculture, local history, and traditional arts. There's also a focus on youth education and training, including sports coaching and entrepreneurship programmes. Overall, the feedback reflected a holistic approach to education, balancing traditional schooling with practical skills development and lifelong learning opportunities.

### The most common themes that emerged from community feedback are:

#### More educational courses

The broader Ōtaki community advocates for diverse educational opportunities, including university-level courses, vocational training in skills like IT and food production, and Earn2Learn programmes. They emphasise increased Te Reo Māori education, courses on sustainable agriculture, local history, and traditional arts. The community focuses on education that leads to local job opportunities and enhances community resilience. The youth of Ōtaki specifically express a desire for in-school mentors to provide support

during challenging times and demand diverse courses that build practical skills for future employment.



### **New schools & education facilities**

The community feedback highlights a growing need for expanded educational facilities. Residents call for a new high school to alleviate pressure on Ōtaki College, which some feel is overcrowded and lacking in options. There's interest in diverse schooling models, including Māori medium education, Steiner methods, and Catholic options. Many suggest a polytechnic or university hub for local tertiary education. Improved early childhood education facilities are also requested. The community emphasises the importance of maintaining small class sizes and providing adequate infrastructure as the population grows. There's also a desire for better afterschool care options for working parents.

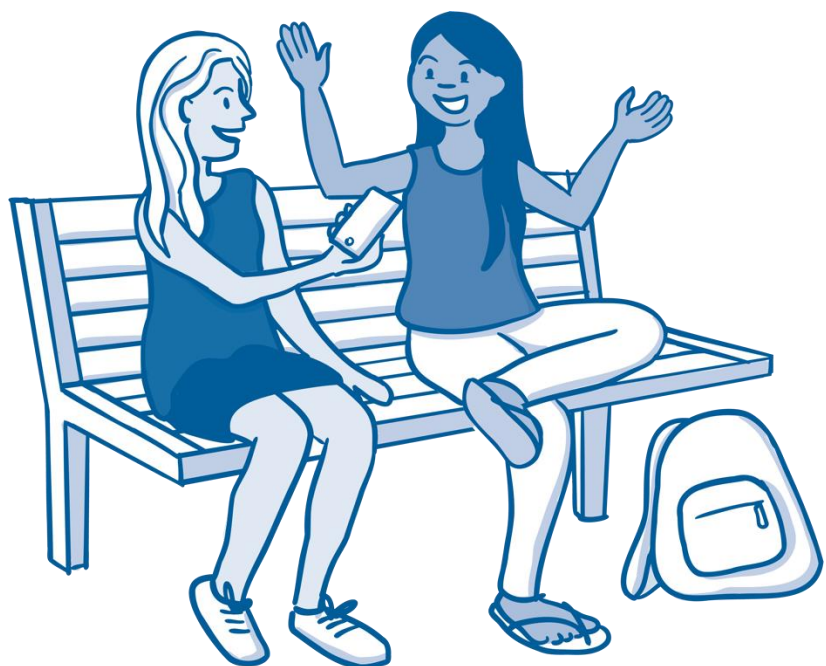
### **Support education providers**

The community feedback presents mixed views on education provision. Some residents praise Ōtaki as a town of educational opportunities, calling for continued expansion and improvement. There's support for a Workers Educational Association to provide diverse classes for all ages. However, others suggest consolidating existing schools into fewer, better-resourced institutions. There's a call for more investment in rangatahi (youth) education. Overall, the community recognises the importance of education in various forms, emphasising the need for ongoing development and adaptation to meet changing needs.

### **Other themes included:**



- Health and fitness education.





## **Ngā Hono Networks & Connectivity**

The feedback related to Ngā Hono | Networks & Connectivity centred on improving transportation and accessibility. A key priority was enhancing public transport services, with calls for more reliable and accessible options, including improved train services and extended networks. There was a strong emphasis on active transport, with requests to extend and maintain cycleways and footpaths. Road safety and traffic management were concerns, particularly with increasing car usage. Residents appreciated the area's connectivity and proximity to nearby towns and facilities. Infrastructure investment was deemed important, including improving internet infrastructure and public amenities. There were specific requests to allow vehicle access to Ōtaki Forks and restrict vehicles on beaches. While some felt no changes were needed, most feedback indicated a desire for better connectivity and infrastructure to support the community's growth and needs.

### **The most common themes that emerged from community feedback are:**

#### **Extend & improve public transport network**

The broader Ōtaki community strongly emphasises the need for improved public transport, particularly regular commuter trains to Wellington and Palmerston North, with suggestions for electrifying the line to Ōtaki. Residents call for more frequent and reliable bus services, especially to Levin and Waikanae, and propose a local circular bus route within Ōtaki. They advocate

for better integration between bus and train timetables, viewing improved public transport as crucial for employment opportunities and reducing car dependency. The youth of Ōtaki specifically request transport options for returning to Ōtaki after events, highlighting their need for increased mobility.



## Infrastructure investment

The community feedback emphasises several key infrastructure priorities. Residents call for improved flood protection measures. Many want infrastructure that maintains the village character while accommodating growth. Suggestions include refreshing the old State Highway 1 route to attract businesses and visitors, creating covered areas for markets and food trucks, and improving parks and beach facilities. Healthcare infrastructure expansion is seen as crucial. Overall, there's a desire for infrastructure that balances development with community character and environmental protection.

### Other themes included:



- Extend and maintain cycleways
- Extend and maintain footpaths
- Improve transportation and traffic issues.

## Improve roads

The community feedback highlights several priorities for road improvements in Ōtaki. Residents call for better maintenance of existing roads, including regular tar sealing and fixing potholes. There's a desire for improved connectivity between different parts of Ōtaki, suggesting a coordinated urban design approach. Many support reopening Ōtaki Gorge Road to enhance access to the Tararua Ranges.







## Ohunga Income & Work

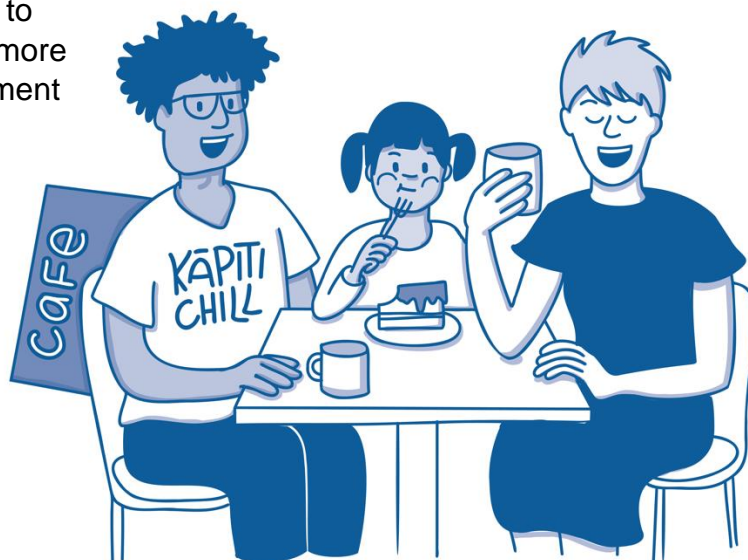
The feedback related to Ohunga | Income & Work highlighted a desire to boost local economy and employment opportunities. There was a strong focus on supporting local businesses, attracting new employers, and promoting the Kāpiti Coast to investors and tourists. Residents called for addressing vacant properties to improve town appeal and enhance the visual character of businesses. The community emphasised the need for local employment initiatives, including support for older workers and a focus on liveable wages. There was interest in flexible workspaces and affordable business premises. Improving and promoting local shopping and dining options was seen as important. Some residents advocated for maintaining affordable rates and stopping excessive commercialisation. Overall, the feedback reflected a balance between economic growth and preserving local character, with emphasis on creating a vibrant, sustainable local economy.

### The most common themes that emerged from community feedback are:

#### Encourage investment in local shopping & dining

The community feedback emphasises a desire for a more vibrant town centre with diverse retail and dining options. Residents call for incentives to attract quality local businesses, particularly in Old Ōtaki. There's support for larger retailers like Farmers or Briscoes to keep shopping local. Many want more restaurants, cafés, and entertainment

venues, including a cinema. The community also wants lower commercial rents to support small businesses and reduce empty shopfronts.



### Support for local businesses & groups

The community feedback emphasises the need for stronger support of local businesses. There's a desire for incentives to attract and retain businesses, particularly in Old Ōtaki. Many suggest a startup incubator and funded coaching for local entrepreneurs. There's also interest in promoting local Māori businesses and the creative economy. Overall, there's a focus on balancing economic growth with maintaining small-town charm.

### More educational courses & facilities

The community feedback emphasises a strong desire for expanded educational opportunities to improve employment opportunity. Residents call for more university-level courses and vocational training programmes, particularly in skills that lead to local job opportunities. There's support for Earn2Learn programmes and increased options to acquire credits. Overall, the community sees education as crucial for future resilience and economic development.

### Other themes included:



- Promote employment
- Support for new businesses
- Address vacant properties and improve town appeal.



Support to attract businesses

## 2.3 Partnership

Below is a summary of the key findings related to 'Partnership'.



### He Waka eke noa/A Shared Waka Community Partnership

The feedback related to He Waka eke noa/A Shared Waka | Community Partnership emphasised a desire for improved Council communication and engagement. Residents called for better responsiveness from the Council and more inclusive decision-making processes, including citizens' assemblies and enhanced Māori and youth representation. There were concerns about Council spending and rates increases, with some advocating for a focus on core functions and services. The community stressed the importance of maintaining affordable rates and reducing Council-imposed barriers. Improved engagement with local businesses and Māori communities was highlighted. Some suggested implementing rebate schemes and monitoring freedom camping impacts. There was support for community organisations and events, reflecting a desire for a thriving, connected community. Overall, the feedback indicated a need for a more transparent, responsive, and inclusive approach to local governance, balancing fiscal responsibility with community needs.

#### **The most common themes that emerged from community feedback are:**

##### **Support for community organisations & events**

The community feedback emphasises a desire for more diverse and frequent community events. Residents support expanding existing successful events like the Māoriland Film Festival and the Ōtaki Kite Festival. There's interest in new initiatives such as crop swaps, food trading opportunities, and an annual community expo. Many call for better coordination among community

groups, suggesting a centralised network or community connector role. The community wants more support for multi-generational activities and increased access to Council facilities for events. There's also a focus on improving communication about local happenings and fostering collaboration between businesses and community organisations.

### **Strengthen community input & decision making**

The community feedback emphasises a desire for more local control and input in decisions. Residents call for changes to the Local Government Act to give Community Boards more decision-making powers, particularly for smaller projects. There's strong sentiment against perceived overreach by both local and central government, with calls for more transparent community engagement on major initiatives. Some want less Council interference in private property matters. Overall, there's a clear desire for a more democratic, bottom-up approach to local governance that truly reflects community wishes.

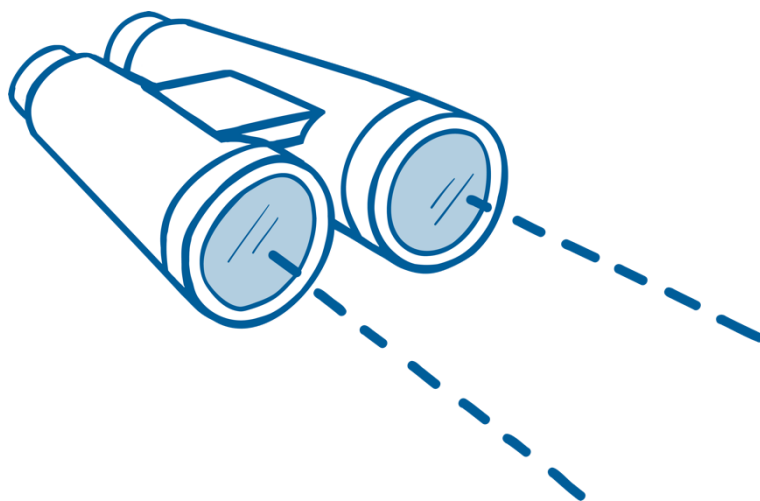
### **Incorporate info boards & signage**

The community feedback strongly emphasises the need for improved signage, particularly for safety and tourism. There's overwhelming support for implementing a 'blue line' system to mark tsunami evacuation zones, along with clear, visible billboards at Ōtaki Beach alerting visitors to tsunami risks. Residents call for more informative noticeboards at beach access points. There's interest in eco-tourism signage, including QR codes linking cyclists and tourists to local amenities. The community also wants more bilingual signage reflecting cultural heritage throughout Ōtaki.

#### **Other themes included:**



- Council to focus on core functions
- Emphasis on democratic inclusivity/collaboration
- Reduce Council imposed barriers to success.



## 2.4 Comparison of Vision Ōtaki and Vision follow up survey results

This section presents the key similarities and differences between the Vision Ōtaki Survey and the Vision follow up survey.

### 2.4.1 Key Similarities

**Community Connection** — Both highlight the importance of community spirit, inclusivity, and the desire for more youth-focused activities and facilities.

**Environmental Concerns** — Both emphasise the community's focus on environmental conservation, including concerns about protecting beaches, waterways, and green spaces.

**Infrastructure Improvements** — Both indicate a desire for enhanced public amenities, improved transport options, and better infrastructure, particularly public transport and healthcare facilities.

**Economic Development** — Both show support for local businesses and the desire to encourage investment in local shopping and dining options.

### 2.4.2 Key Differences

**Emphasis on Council Actions** — The follow-up survey places more emphasis on Council spending, rates increases, and the desire for transparency and accountability in Council decisions.

**Health Services** — The follow-up survey places more emphasis on the need for improved healthcare facilities and services, particularly mentioning the lack of a pharmacy open on Saturdays.

**Housing Concerns** — While both surveys mention housing, the follow-up survey seems to place more emphasis on issues like retirement homes and maintaining affordable rates.

**Specific Project Mentions** — The follow-up survey mentions specific issues like the development of Ōtaki Forks and potential higher density residential development at Te Horo, which weren't highlighted in the initial survey.

**Māori Culture** — The initial survey had more mentions of preserving and promoting Māori culture and heritage, while this was less prominent in the follow-up survey.

### 2.4.3 Implications for Vision Ōtaki Refinement

**Maintain Core Themes** — Retain and potentially strengthen language around community connection, environmental conservation, infrastructure improvements, and economic development.

**Incorporate Emerging Concerns** — Update Vision to reflect new community priorities around Council transparency, fiscal responsibility, and specific local issues.

**Emphasise Health Services** — Consider more specific language about improving local healthcare facilities and services, particularly pharmacy access.

**Refine Housing Goals** — Articulate a balanced approach to housing that addresses affordability, retirement options, and maintaining affordable rates.

**Include Specific Local Priorities** — Where appropriate, reference specific community-driven projects or concerns.

**Maintain Cultural Focus** — Keep strong language around preserving and promoting Māori culture and heritage.

**Emphasise Economic Growth** — Continue to focus on supporting local businesses and encouraging economic development.

**Maintain Environmental Commitment** — Keep strong language around protecting natural resources and green spaces.

**Strengthen Transport Focus** — Maintain or increase emphasis on improving public transport options.

**Emphasise Ongoing Engagement** — Highlight the commitment to continued community dialogue and responsiveness to evolving needs.



## 3 Data analysis methodology

### 3.1 Survey data analysis

PublicVoice used a step-by-step method called thematic analysis to review the open-ended responses from the Vision Ōtaki community engagement survey. This method follows five main steps:

1. Understanding the data: Analysts read the survey data multiple times to grasp its content.
2. Initial coding: The survey data was sorted into labelled segments highlighting key points.
3. Identifying themes: These segments were then grouped into broader themes specific to the survey questions.
4. Refining themes: Themes were checked for relevance and clarity within the survey context.
5. Finalising themes: Each theme was carefully defined, possibly with sub-themes, to represent the survey responses accurately.

### 3.2 Key findings analysis

To generate the key findings, PublicVoice combined the survey data with additional feedback points received from the Ōtaki Engagement Hub as part of Vision Kāpiti engagement. The analysis of the combined data was structured using the framework of the Council's Doughnut Economic Framework, which provides a holistic view of the community's well-being by considering social, cultural, environmental, and economic factors.

The key findings were organised into themes that align with the various dimensions of the Doughnut Framework. This approach allowed for a comprehensive understanding of the community's values, priorities, and concerns, extending beyond the specific questions asked in the survey.

### 3.3 Reporting

For the survey data, tables illustrating the frequency of the key themes have been included to demonstrate the significance of each theme. Only descriptions of the most frequent themes have been included in Section 4, "Key findings from the Vision Ōtaki survey," to highlight the main points expressed by respondents.

In contrast, Section 3 reports the essential findings and presents the most common topics from the combined data, organised according to the Doughnut Framework. This section provides a more detailed analysis, offering valuable insights and guidance for the Council's decision-making processes and future planning efforts.

By differentiating between the analysis and reporting approaches for the survey data and the key findings, the methodology section clarifies the distinct methods used to examine and present the community's feedback.



## Phase One: Gathering initial views

### 4 Vision Ōtaki survey

This section presents the key findings from the Vision Ōtaki community engagement survey which received 185 responses. The survey asked 15 questions.

Four general questions:

- What makes Ōtaki feel like home?
- What changes do you want to see in our community now?
- What aspirations do you have for future generations living in our community?
- Is there anything else you'd like to share about the future development of Ōtaki that wasn't covered in the survey?

11 specific topic-based questions:

- How do we improve health and access to services?
- How do we enjoy and improve our natural spaces?
- What type of housing do we need?
- Do we get the education we need here?
- Can you get where you need to get. What options are missing?
- Can you get the work or workers you want in Ōtaki?
- What makes Ōtaki a great place to come to visit?
- How do we make Ōtaki a great place for businesses and shops?
- How do we stay safe and recover in an emergency?
- How do we stay connected - what could we improve?
- What are the most important places and spaces to protect for the future?

The analysis of survey data has been structured using the framework of the Council's Doughnut Economic Framework. The key findings are organised into themes that align with the various dimensions of the Doughnut Framework. A subset of these questions were used for other stakeholder engagements listed in the front of this report resulting in higher numbers of responses and frequencies for those questions.

The most common topics that emerged from the community feedback are highlighted for each theme. These insights shed light on the Ōtaki community's values, priorities, and concerns, offering valuable guidance for the Council's decision-making processes and future planning efforts.

## 4.1 What makes Ōtaki feel like home?

Respondents were asked what makes Ōtaki feel like home. Table 1 details the various aspects identified by respondents.

### Overview of responses

**Connections with others** — Respondents mentioned several aspects about their connections with others in the community. Important aspects highlighted include the sense of community and friendliness, the small-town atmosphere, the presence of Māori culture, and the strong whanau connections. Some respondents also expressed concern about the changing dynamics of the community and the loss of its original feel.

**Biodiversity** — Respondents mention the importance of the environment and highlight the beauty of the beach and the connection to the river and land.

Theme	Subtheme	Frequency
CONNECTIONS WITH OTHERS		117
	Friendly, safe, community-oriented lifestyle	48
	Village feel, local events, tight-knit society	25
	Longtime resident/resident	20
	Growing Māori community/identity	8
	Quiet, peaceful living	5
	Recreational facilities for families etc.	5
	Community diversity	3
	Ōtaki no longer feels like home/has changed	3
BIODIVERSITY		32
	Beaches, rivers, bush and green spaces	32
CLIMATE & CHANGE		3
	Enjoy the local climate and weather	3
NETWORKS & CONNECTIVITY		3
	Access to services (e.g. healthcare, shopping)	3

Table 1: What makes Ōtaki feel like home?

## 4.2 What changes do you want to see in our community now?

Respondents were asked what changes they want to see in the community now. Table 2 details suggested changes from the community.

### Overview of responses

**Connections with others** — Respondents highlight the importance of community connection and relationships. They mentioned the need for more activities and facilities for youth, such as a dedicated youth centre and more parks. Additionally, the promotion of Te Reo Māori within the community was mentioned.

**Networks & connectivity** — Respondents mentioned a variety of improvements they would like to see regarding networks and connections in Ōtaki. Transport was a common theme, with requests for better public transport options, including more frequent train services to Wellington and a bus service to Levin. Other aspects mentioned included, better roads, improved bicycle, and pedestrian pathways along with increased traffic management.

**Income & work** — Respondents have expressed various desires and concerns regarding income and work. Some important aspects include the need for more investment in the Māori economy, the desire for more business opportunities, and the request for lower rents and support for local businesses.

**Peace & safety** — Respondents express the need for more police presence to enhance the safety and security of the community in Ōtaki. They also highlight the importance of addressing issues such as youth crime, addiction support services, and roaming dogs. The installation of a blue line marking the tsunami evacuation zone and better signage for tsunami awareness are also mentioned as crucial safety measures.

**Health** — Respondents mention the need for better access to health facilities, including another medical centre and a pharmacy open on weekends. Some respondents emphasise the importance of providing healthcare services specific to Māori.

**Biodiversity** — Respondents mention the importance of preserving open spaces, such as small parks and the beachfront. Additionally, respondents suggest creating more playgrounds and green spaces, and taking care of the waterways to make the town more vibrant and family friendly.

**Climate & change** — Respondents are calling for more investment in local kai resilience and sovereignty. Additionally, there are calls for a focus on the installation of solar panels on all new builds and implementing more community emergency evacuation drills.

Theme	Subtheme	Frequency
CONNECTIONS WITH OTHERS		148
	Development of youth-focused activities/facilities	35
	Support for community sports/outdoor activities	32
	Develop spaces for gatherings/events	20
	Create and maintain inclusive spaces	19
	Support arts and culture	15
	Retain small-town character	9
	Focus on Te Reo Māori	8
	Provide more social support	7
	More recreational areas for various age groups	3
NETWORKS & CONNECTIVITY		81
	Improvement of public transport options/access	46
	Bicycle/pedestrian path improvements	11
	Improve roads	10
	Road safety measures, traffic management	7
	Efficient waste management/recycling systems	4
	Restrict and monitor vehicles on beaches	3
INCOME & WORK		71
	Encourage investment in local shopping and dining	27
	Support for local businesses	11
	Addressing vacant properties/improve town appeal	10
	Local employment opportunities	9
	Commercial rent control	5
	Maintain affordable rates	5
	Enhance tourism industry/new branding	4
PEACE & SAFETY		47
	Improve safety	15
	Increase police presence	11
	Signage for Tsunami safe zones needed	11
	Animal safety/control	5
	Safety measures for both young and elderly	5
HEALTH		41
	Establishment of local healthcare facilities	26
	Improve access to GP services	10
	Extend pharmacy hours/open a second pharmacy	5
BIODIVERSITY		18

Theme	Subtheme	Frequency
CLIMATE & CHANGE	Protection/enhancement of natural spaces	18
		14
HOUSING	Focus on food resilience	9
	Enhanced resilience/emergency preparedness	5
COMMUNITY PARTNERSHIP	Improve access to affordable housing	8
		6
RIVER/OCEAN HEALTH	Improve Council governance	6
		3
EDUCATION & TRAINING	Addressing concerns around water quality/waste	3
		2
	Local university	1
	New school/s	1

Table 2: What changes do you want to see in our community now?

### 4.3 What aspirations do you have for future generations living in our community?

Respondents were asked what aspirations they held for future generations in the community. Table 3 details the aspirations of the Ōtaki community.

#### Overview of responses

**Connections with others** — Respondents hope for a thriving town that values Māori culture and promotes connections with others. They emphasise the importance of maintaining a small-town atmosphere and a strong sense of community. Additionally, they hope for a sense of community pride, with support for the arts and cultural diversity.

**Biodiversity** — Respondents express a desire for a thriving town that promotes the preservation of biodiversity. They emphasise the importance of a clean and cared-for environment and development which is sustainable. Additionally, respondents highlight the need to protect natural assets such as beaches and rivers.

**Peace & safety** — Respondents highlighted the importance of safe spaces in the community, with an emphasis on respect, and harmony.

**Income & work** — Respondents express the importance of having a thriving town and emphasise the need for local employment opportunities.

Theme	Subtheme	Frequency
CONNECTIONS WITH OTHERS		73
	Thriving connected community/supportive of others	29
	Retain small-town character	12
	Support arts and culture	10
	Development of youth-focused activities/facilities	9
	Support for community sports/outdoor activities	5
	Develop spaces for gatherings/events	4
	Focus on Te Reo Māori	4
BIODIVERSITY		20
	Protection/enhancement of natural spaces	20
PEACE & SAFETY		18
	Improve safety	18
INCOME & WORK		15
	Local employment opportunities	9
	Local shopping and dining options	6
NETWORKS & CONNECTIVITY		9



Theme	Subtheme	Frequency
HEALTH	Improvement of public transport options/access	9
	Establishment of local healthcare facilities	9
EDUCATION & TRAINING	More educational courses/facilities	8
HOUSING	Improve access to affordable housing	8
COMMUNITY PARTNERSHIP	Improve Council governance	5
CLIMATE & CHANGE	Enhanced resilience/emergency preparedness	4
WATER	Focus on food resilience	2
	Address concerns around water quality/waste	1

Table 3: What aspirations do you have for future generations living in our community?

## 4.4 How do we improve health and access to services?

Respondents were asked how improvements could be made to health and access to services.

Theme	Subtheme	Frequency
HEALTH SERVICES/ACCESSIBILITY		73
	Improve access to hospital services	19
	Establishment of local healthcare facilities	18
	Extended pharmacy hours/open a second pharmacy	10
	Improve access to GP services	9
	Improve access to emergency care services	6
	Elderly care and dementia services	4
	Support ambulance services	4
	Improved access to dental care	3
POLICY		10
	Policies to attract/retain medical professionals	10
AMENITIES & INFRASTRUCTURE		7
	Traffic and transportation issues	7
HEALTHY LIVING/EDUCATION		2
	Education on healthy living	2

Table 4 details improvements mentioned by the respondents.

### Overview of responses

**Health services & accessibility** — Respondents emphasise the need for improved access to health services in Ōtaki. They suggest increasing the number of staff, expanding the medical centre, and establishing a health hub with multiple services. Furthermore, they express the need for more doctors, nurses, pharmacies, and specialist health services to cater to the growing population. They also suggest bringing nurses training back to hospitals and providing more hands-on patient care, as well as opening satellite day hospital services for local health assessments and minor surgeries. Overall, the goal is to enhance accessibility and provide comprehensive, quality care to the community.

**Policy** — Respondents highlight the need for the government to allow specialised health workers to work and live in New Zealand. They also express dissatisfaction with the current state of GP care and suggest increasing employment of doctors, collaborating with health providers and government entities to ensure access to necessary services, and creating a health hub to attract more doctors and pharmacies.

Theme	Subtheme	Frequency
-------	----------	-----------

HEALTH SERVICES/ACCESSIBILITY		73
	Improve access to hospital services	19
	Establishment of local healthcare facilities	18
	Extended pharmacy hours/open a second pharmacy	10
	Improve access to GP services	9
	Improve access to emergency care services	6
	Elderly care and dementia services	4
	Support ambulance services	4
	Improved access to dental care	3
POLICY		10
	Policies to attract/retain medical professionals	10
AMENITIES & INFRASTRUCTURE		7
	Traffic and transportation issues	7
HEALTHY LIVING/EDUCATION		2
	Education on healthy living	2

*Table 4: How do we improve health and access to services?*

## 4.5 How do we enjoy and improve our natural spaces?

Respondents were asked how they enjoy their natural spaces and how they could be improved. Table 5 details responses from the community.

### Overview of responses

**Biodiversity** — Respondents emphasise the importance of preserving and protecting natural spaces, such as beaches, riverbanks, and swamps, and advocate for measures such as restricting vehicle access, regulating camping, and preventing the removal of driftwood. They also highlight the need for river plantings, increased maintenance and cleanliness, the protection of biodiversity, and the promotion of education and awareness on important species and environmental issues.

**Connections with others** — Respondents emphasise the importance of being responsible caretakers and taking measures to protect natural spaces. They highlight the need for education on environmental issues and promoting sustainable practices, such as composting and food growing. Other suggestions include managing pests, encouraging monitoring, and reporting by enthusiast clubs, and raising expectations for responsible behaviour to maintain cleanliness and protect flora and fauna. Additionally, there is a proposal to work with farmers to protect waterways and reduce pollution, as well as promoting Ōtaki as a certified International Dark Sky Community to preserve the night sky from light pollution.

Theme	Subtheme	Frequency
BIODIVERSITY		23
	Protect beaches/waterways and green Kāpiti	23
CONNECTIONS WITH OTHERS		21
	Promoting environmentally responsible behaviour	9
	Support for recreational activities	9
	Toilets and bins needed on beaches and along river	3
NETWORKS & CONNECTIVITY		6
	Efficient waste management/recycling systems	6
PEACE & SAFETY		1
	Improve safety	1

Table 5: How do we enjoy and improve our natural spaces?

## 4.6 What type of housing do we need?

Respondents were asked what type of housing Ōtaki needs. Table 6 details the different types of housing mentioned by respondents.

### Overview of responses

**Housing diversity & design** — Respondents express the need for more affordable rental properties, including pensioner flats, and advocate for less regulation to foster multi-generational living. They emphasise the importance of creating attractive and sustainable housing options to avoid future slums. Respondents also call for a balanced range of housing that accommodates various demographics near amenities. Additionally, there is a demand for social housing and off-the-grid housing with solar panels and water tanks, as well as a focus on ensuring public housing is well-managed.

**Affordability** — Respondents are emphasising the need for good quality but low-cost housing and the importance of affordable housing for residents. They also express concern about empty holiday homes for the wealthy and advocate for affordable and well-designed social housing that supports sustainable development. There is also a desire for affordable rentals and emergency housing for those experiencing homelessness.

**Policy & planning** — Respondents emphasise the need for good planning and policies that will help with housing provision in Ōtaki. They express the need for housing standards that will ensure access to safe, warm, and sustainable homes. They also suggest implementing policies to prioritise homes for community members over Airbnb rentals and to address homelessness by utilising empty houses.

Theme	Subtheme	Frequency
HOUSING DIVERSITY & DESIGN		19
	Development of various housing types/sizes	8
	Inter/multi-generational homes	4
	More affordable rental options	4
	Build more retirement homes	3
AFFORDABILITY		12
	Strategies to ensure housing is affordable	12
POLICY & PLANNING		10
	Development of housing standards	6
	Develop more social housing	4
ACCESSIBILITY		3
	Increase accessibility to/accessible housing	2
	Ensure accessibility for elderly	1
AMENITIES & INFRASTRUCTURE		1
	Public parks, pools, community hubs etc.	1

Table 6: What type of housing do we need?

## 4.7 Do we get the education we need here?

Respondents were asked if Ōtaki gets the education it needs. Table 7 details responses from the community.

### Overview of responses

**Education** — Respondents express various sentiments regarding education in Ōtaki. Some highlight the need for grassroots programs, teaching civics and practical skills, and more options for secondary schooling. Others mention the importance of acknowledging and supporting Māori medium education. However, there are also concerns about funding, limited options and support at the college level.

Theme	Subtheme	Frequency
EDUCATION	Yes, we get the education we need	7
	No, we do not get the education we need	6
	New schools/education facilities	4
		3
INFRASTRUCTURE	Provide necessary education infrastructure	3
GENERAL COMMENTS		1
	Central government funding required	1

Table 7: Do we get the education we need here?



## 4.8 Can you get where you need to get? What options are missing?

Respondents were asked if they can get where they need to get and what travel options are missing for them. Table 8 details responses from the community.

### Overview of responses

**Networks & connectivity** — Respondents express the need for better public transport options in Ōtaki, including a commuter rail link and regular train services to Wellington and Palmerston North. They also mention the lack of connecting buses and the limited availability and reliability of buses. Overall, respondents believe that improving networks and connections is crucial for the community's accessibility and development.

Theme	Subtheme	Frequency
NETWORKS & CONNECTIVITY	Frequent train service from Ōtaki to Wellington	25
	Improved public transport/hubs	23
	Frequent train service to Palmerston North	9
	Bus service to Paraparaumu/Levin/Palmerston North	8
	More rideshare/taxi options needed	4

Table 8: Can you get where you need to get. What options are missing?

## 4.9 Can you get the work or workers you want in Ōtaki?

Respondents were asked if they can get the work or workers that they want in Ōtaki. Table 9 details the responses from the community.

### Overview of responses

**Work wanted** — Respondents mention a range of sentiments regarding work availability in Ōtaki. Some express the need to travel to other areas for work, while others mention a lack of job opportunities in their professional fields. However, there are a few who believe that there are plenty of job options available. Some respondents suggest creating work hubs in the area as well as promoting larger businesses and more employment opportunities.

Theme	Subtheme	Frequency
WORK WANTED		21
	No, I am unable to get the work I want in Ōtaki	7
	Yes, I am able to get the work I want	7
	No, I travel outside of Ōtaki to get work I want	4
	More jobs needed	3
WORKERS NEEDED		3
	Education and training are required	3
GENERAL COMMENTS		3
	Support for local businesses needed	3

Table 9: Can you get the work or workers you want in Ōtaki?

## 4.10 What makes Ōtaki a great place to come to visit?

Respondents were asked what makes Ōtaki a great place to visit. Table 10 presents a summary of respondent ideas about what makes Ōtaki a great place to visit.

### Overview of responses

**River/ocean quality** — Respondents mention that the beach and river are important aspects of what makes Ōtaki a great place to visit. They also mention the natural resources and landscape in the area. Suggestions for improvement included investing in the beach pavilion and shopping area.

**Connections with others** — Respondents highlight the warmth of the people and community events as important aspects of their connections with others. They also mention the significance of historical sites, the Māori character of the town along with the Te Reo speaking community as important aspects of Ōtaki.

**Biodiversity** — Respondents mention the natural beauty of the location, including the mountains and forests. They also highlight the importance of preserving biodiversity and promoting the town's natural assets for tourism.

Theme	Subtheme	Frequency
RIVER/OCEAN QUALITY		22
	Proximity to seaside and beaches	16
	Proximity to local rivers	6
CONNECTIONS WITH OTHERS		20
	Community events/festivals/Māoriland	9
	Friendly community	6
BIODIVERSITY	Support for the arts and culture	5
		11
	Proximity to nature	7
NETWORKS & CONNECTIVITY	Proximity to mountains/hills	4
		9
	Enjoy the walkways	3
CLIMATE & CHANGE	Enjoy visiting local shops	3
	Proximity to Wellington	3
		5
	Enjoy the local climate and weather	5

Table 10: What makes Ōtaki a great place to come to visit?

## 4.11 How do we make Ōtaki a great place for businesses and shops?

Respondents were asked how to make Ōtaki a great place for businesses and shops.

Theme	Subtheme	Frequency
LOCAL BUSINESS SUPPORT		41
	Support/incentivise local businesses	14
	Address vacant properties/improve town appeal	12
	Advertisements for local shopping area	10
	Ensure affordable leases	5
COMMUNITY PARTNERSHIP		10
	Engagement with local businesses	4
	Maintain affordable rates	3
	Reduce Council imposed barriers to success	3
NETWORKS & CONNECTIVITY		8
	Improve roads/access	5
	Upgrade public amenities	3

Table 11 provides respondent insights.

### Overview of responses

**Local business support** — Respondents mention that to enhance the Ōtaki economy, there should be a vision for creating an indigenous economy and support for new businesses and ideas. They also suggest lower rents for retail areas and encouraging local enterprise. They emphasise the need for improvements in the main shopping area, better signage, and revitalising the town to attract visitors and support local businesses. There is a call for incentivising landlords to lease empty spaces for business opportunities. Overall, respondents stress the importance of community support and creating a welcoming destination for businesses.

**Community partnership** — Respondents emphasise the need for engagement with local businesses to support the local economy in Ōtaki. They suggest implementing small business grants and a business hub to support individuals in getting their ideas off the ground. They also highlight the importance of reducing red tape and costs associated with starting and operating businesses to attract and retain businesses in the community along with maintaining affordable rates for businesses.

Theme	Subtheme	Frequency
LOCAL BUSINESS SUPPORT		41

	Support/incentivise local businesses	14
	Address vacant properties/improve town appeal	12
	Advertisements for local shopping area	10
	Ensure affordable leases	5
COMMUNITY PARTNERSHIP		10
	Engagement with local businesses	4
	Maintain affordable rates	3
	Reduce Council imposed barriers to success	3
NETWORKS & CONNECTIVITY		8
	Improve roads/access	5
	Upgrade public amenities	3

*Table 11: How do we make Ōtaki a great place for businesses and shops?*

## 4.12 How do we stay safe and recover in an emergency?

Respondents were asked how the community will stay safe and recover in an emergency.

Theme	Subtheme	Frequency
COMMUNITY PARTNERSHIP		17
	Increase Council engagement and communication	17
NETWORKS & CONNECTIVITY		16
	Enhanced resilience/emergency preparedness	5
	Establish emergency hubs	4
	Promote safe on site water storage	4
	Safe accessible emergency shelters needed	3
CONNECTIONS WITH OTHERS		12
	Promoting a helpful and supportive community	8
	Focus on food resilience	4
PEACE & SAFETY		2
	Increase police presence	2
ENERGY		1
	Develop a power plant	1

Table 12 lists the suggestions made by respondents.

### Overview of responses

**Community partnership** — Respondents emphasise the need for community outreach and the role of Māori leadership in community partnerships. There is a call for more information from the Council as well with a suggestion that this information be disseminated online. Respondents appreciate the initiatives taken by the Council to promote community resilience and stress the need for connecting communities to aid in disaster recovery.

**Networks & connectivity** — Respondents express the need for more on-site water storage, safe spaces with housing in case of disasters, and sustainable options like solar panels and increased food production. They emphasise the importance of community centres, basic needs being supplied from renewable sources, and access improvement in towns. Connecting communities, having emergency hubs, and providing information for evacuations are also mentioned. Respondents emphasise the need to prepare for floods and avoid building on land at risk from rising sea levels. Furthermore, there is a call for clear markings of tsunami zones and for the expansion of local civil defence.

**Connections with others** — Respondents emphasise the importance of community connections and helping each other. They suggest initiatives such as community



gardens and sharing resources to support the elderly and new parents. They highlight the need for community support groups and initiatives that promote a sense of community and connect communities together.

Theme	Subtheme	Frequency
COMMUNITY PARTNERSHIP		17
	Increase Council engagement and communication	17
NETWORKS & CONNECTIVITY		16
	Enhanced resilience/emergency preparedness	5
	Establish emergency hubs	4
	Promote safe on site water storage	4
	Safe accessible emergency shelters needed	3
CONNECTIONS WITH OTHERS		12
	Promoting a helpful and supportive community	8
	Focus on food resilience	4
PEACE & SAFETY		2
	Increase police presence	2
ENERGY		1
	Develop a power plant	1

Table 12: How do we stay safe and recover in an emergency?

#### 4.13 How do we stay connected — what could we improve?

Respondents were asked how the community stays connected and how this could be improved.

Theme	Subtheme	Frequency
CONNECTIONS WITH OTHERS		16
	Hosting community focused gatherings/events	7
	Promoting a helpful and supportive community	5
	Develop accessible/welcoming community spaces	4
NETWORKS & CONNECTIVITY		3
	Improve public transport	3

COMMUNITY PARTNERSHIP		3
	Enhance communication (e.g. local papers)	3
INCOME & WORK		2
	Focus on building business networks	2
CLIMATE & CHANGE		1
	Focus on food resilience	1

Table 13 provides community insights into how they stay connected as well as how this could be improved.

### Overview of responses

**Connections with others** — Respondents express the importance of having an annual expo event with diverse activities, accessible and welcoming community spaces, specific assistance for elderly individuals of all ethnicities, community services and events, prioritising Māori culture, revitalising neighbourhood support networks, increasing open spaces for social interactions, and providing a community connector to bring people together. Supporting outdoor events and festivals is also recommended.

Theme	Subtheme	Frequency
CONNECTIONS WITH OTHERS		16
	Hosting community focused gatherings/events	7
	Promoting a helpful and supportive community	5
	Develop accessible/welcoming community spaces	4
NETWORKS & CONNECTIVITY		3
	Improve public transport	3
COMMUNITY PARTNERSHIP		3
	Enhance communication (e.g. local papers)	3
INCOME & WORK		2
	Focus on building business networks	2
CLIMATE & CHANGE		1
	Focus on food resilience	1

Table 13: How do we stay connected — what could we improve?

## 4.14 What are the most important places and spaces to protect for the future?

Respondents were asked what the most important places and spaces are to protect for the future. Table 14 provides insights into the places and spaces respondents would like protected for the future.

### Overview of responses

**River/ocean health** — Respondents highlight the importance of access to rivers and the beach. They mention the significance of waterways, such as rivers and streams, as well as the need to protect and restore beach and river environments.

**Biodiversity** — Respondents mention the importance of access to natural areas such as native bush and parks. Some express concern about maintaining the spiritual and cultural connection to the land and the need for understanding and respect for tangata whenua rights.

**Networks & connectivity** — Respondents express various opinions about networks and connections in Ōtaki. The railway station is noted as a site in need of restoration. Other mentioned important sites include Ōtaki historical buildings such as Rangiaatea Church, Pukekaraka, Ōtaki Museum, the beach pavilion, the Māoriland Hub, and the three remaining hotels.

**Connections with others** — Respondents are emphasising the importance of protecting all hapū and iwi sites of significance, including marae, beaches, rivers, swamps, streams, hills, and water bodies. Additionally, respondents mention culturally significant places like battle sites on Rangiuru Road and request more information and signs to learn about these historical sites.

Theme	Subtheme	Frequency
RIVER/OCEAN HEALTH		53
	Protect rivers and waterways	24
	Protect Ōtaki beaches and ocean	22
	Protect the sand dunes	4
	Protect the gorge	3
BIODIVERSITY		23
	Protect parks and areas with native bush	13
	Protect the environment in general	10
NETWORKS & CONNECTIVITY		20
	Protect heritage sites	6
	Protect the museum	5
	Protect Ōtaki railway station	5
	Protect local churches	4
CONNECTIONS WITH OTHERS		15

Protect all hapū and iwi sites of importance	5
Protect walkways/access	4
Protect playgrounds	3
Protect the village feel of the area	3

Table 14: What are the most important places and spaces to protect for the future?

## 4.15 Is there anything else you'd like to share about Ōtaki's future development that wasn't covered in the survey?

Respondents were asked if there was anything else they would like to share about Ōtaki's future development. Table 15 presents the ideas mentioned by respondents.

### Overview of responses

**Community partnership** — Respondents emphasise the need for the Council to prioritise spending in Ōtaki and address the community's needs. They express frustration with the unequal distribution of resources between Ōtaki and other areas of the Kāpiti Coast, calling for a more equal spend throughout the region. The community also wants increased transparency in the Council's decision-making process and more involvement of Māori in decision making.

**Connections with others** — Respondents emphasised the need for the Council to listen to the community's needs, such as a youth space and support for older people who are lonely. Respondents emphasised the need to focus on growth that is sustainable. Suggestions for sustainable growth included carefully planned expansion, preserving good growing soils, and developing Ōtaki as a destination with unique character and attractions.

Theme	Subtheme	Frequency
COMMUNITY PARTNERSHIP		11
	Increase Council engagement and communication	6
	Increase Council spend in Ōtaki	5
CONNECTIONS WITH OTHERS		10
	Focus on development that is sustainable	5
	Increase youth programs and facilities	5
NETWORKS & CONNECTIVITY		6
	Extend public transport network	2
	Improve roads	2
	Develop a local airport	1
	Focus on infrastructure development	1

Theme	Subtheme	Frequency
INCOME & WORK		6
	Local employment opportunities	2
	Address loss of business resulting from bypass	1
	Encourage investment in local shopping and dining	1
	Promote Māoriland	1
	Support for local businesses/groups	1
OTHER		5
	Addressing vacant properties/improve town appeal	5
PEACE & SAFETY		4
	Improve safety	2
	Improve animal safety/control	1
	Improve road safety and use with increased cars	1
HOUSING		4
	Balance densification with character preservation	4
LAND USE & QUALITY		4
	Balance densification with character preservation	4
CLIMATE & CHANGE		3
	Enhanced resilience/emergency preparedness	3

*Table 15: Is there anything else you'd like to share about Ōtaki's future development that wasn't covered in the survey?*

## Phase Two: Testing what we have heard so far

### 5 Vision follow up survey

This section of the report summarises community feedback received as part of the Council’s Vision follow up survey. The community was provided with a summary of the feedback received from the initial engagement for reflection and refining.

#### 5.1 Does this reflect what's important to you?

Respondents were asked whether the feedback received reflected what was important to them. Table 16 is a summary of the feedback received.

##### Overview of responses

**Community partnership** — The respondents mentioned that there was an issue with accountability to the ratepayers, as well as difficulties in the Council's consent process which was described as being long and costly. One respondent expressed that the Vision for Ōtaki aligns with their own priorities for the town and suggested that it would be beneficial to understand the steps involved in moving from vision to strategy, plan, and objectives.

Theme	Subtheme	Frequency
COMMUNITY PARTNERSHIP		3
	Criticism of consultation process	2
	Desire for improved Council communication	1
HOUSING		1
	Support for affordable/more housing	1
HEALTH		1
	Improved access to healthcare facilities	1
NETWORKS & CONNECTIVITY		1
	Improved public transport	1
BIODIVERSITY		1
	Tree planting and green space preservation	1
CONNECTIONS WITH OTHERS		1
	Facilities for different age groups	1
OTHER		1
	Concern about rates increases	1

Table 16: Does this reflect what's important to you?



## Selected quotes

"The Vision expressed for Ōtaki does reflect what I see as important for the town. There are probably some areas that may be seen to have a higher priority (and I am sure there will be many different views on this) and so it would be useful to understand how we move from Vision to Strategy, Plan, and Objectives."

**Does this reflect what's important to you?**

## 5.2 Is there anything missing?

Respondents were asked whether there is anything missing. Table 17 provides an overview of what respondents feel is missing or would like to emphasise.

### Overview of responses

**Health** — Respondents raised concerns about the lack of a pharmacy open on Saturdays in Ōtaki, causing long queues and stressful conditions for staff. Locals also expressed worries about the management of the town's growth and the prioritisation of health provision alongside it. Additionally, there were suggestions to create a comprehensive health regime for the entire Kāpiti Coast and coordinate health facilities with transport infrastructure.

**Networks & connectivity** — Respondents emphasise the importance of infrastructure, such as transportation, housing, and health, in supporting the projected population growth of Ōtaki and urge the explicit inclusion of key requirements in the District Plan. They also call for a comprehensive health and well-being regime that includes coordination with transport infrastructure and parking provisions at the Ōtaki Railway Station. Lastly, respondents highlight the need for the development and easy access to Ōtaki Forks and the potential for higher density residential development at Te Horo.

**Community partnership** — Respondents express concern for the lack of support for the elderly in Ōtaki, resulting in many having to leave their homes and support networks. They highlight the difficulties faced in finding suitable rest home care and the added challenges of transportation and limited public transport options for those left behind. They request that the Council take steps to encourage the provision of quality rest home facilities. They also emphasise the importance of a financially responsible council that prioritises core services.

"A financially responsible council, we want core services done properly."

**Is there anything missing?**

Theme	Subtheme	Frequency
HEALTH		4
	Improved healthcare facilities and services	4
NETWORKS & CONNECTIVITY		3
	Enhanced public transport services	3
COMMUNITY PARTNERSHIP		3
	Concern about Council spending and rates increases	2
	Focus on core services	1
HOUSING		3
	Maintain affordable rates	2
	Build more retirement homes	1
BIODIVERSITY		2
	Focus on environmental conservation	2
CONNECTIONS WITH OTHERS		1
	Support for Māori culture and heritage	1
WATER		1
	Improved water management and quality	1

Table 17: Is there anything missing?

## Broader community engagement

In addition to the targeted Vision Ōtaki surveys and workshops, several other community engagement initiatives have provided valuable insights into the priorities, concerns, and aspirations of Ōtaki residents. These broader engagement efforts have captured a wide range of perspectives on various aspects of community life, from long-term planning to specific local projects.

The following sections summarise key findings from:

- The Long Term Plan 2024-2034 consultation process
- Youth Needs Assessment: Insights from Kāpiti young people

These additional sources of community feedback complement and enrich the Vision Ōtaki engagement, offering a more comprehensive understanding of the community's vision for its future. By considering these diverse inputs, we can ensure that the Vision Ōtaki reflects a broad spectrum of community voices and addresses both immediate concerns and long-term aspirations.

The insights gathered from these broader engagement initiatives align with and expand upon many of the themes identified in the Vision Ōtaki process, providing a robust foundation for future planning and decision-making in the area.

## 6 Relevant Insights from the Long-Term Plan Process

The Long Term Plan (LTP) 2024-34 consultation process yielded several relevant insights into the future development of Ōtaki. This engagement captured a wide range of community perspectives on issues affecting the area's growth, infrastructure needs, and overall wellbeing.

Feedback covered topics such as water infrastructure upgrades, transportation improvements, support for local businesses and tourism, environmental protection, housing diversity, and community engagement in decision-making processes. These insights highlight the community's priorities and aspirations, providing valuable guidance for the future.

The following subsections summarise the key themes that emerged from the LTP consultation, offering an overview of the community's views on how Ōtaki should develop over the next decade. These findings complement and reinforce the insights gathered through the Vision Ōtaki engagement, contributing to a more comprehensive understanding of the community's vision for the future.

### 6.1 Water Infrastructure

Strong calls to prioritise water infrastructure upgrades and renewals as a core Council function. This aligns with the Vision Ōtaki feedback emphasising the importance of protecting waterways and improving water management.

## 6.2 Transportation

**Roading** — Some residents advocated for reopening Ōtaki Gorge Road to improve access to natural areas and promote local attractions.

**Public transport** — Highlighted need for improved public transport options, including better connections to Wellington and other nearby towns, echoing the Vision Ōtaki feedback.

## 6.3 Community Facilities & Economic Development

**Ōtaki Market** — Strong support for Council purchase of the land where the Ōtaki Market is held to allow for improvements and expansion.

**Local economy** — Emphasis on supporting local businesses and promoting tourism to benefit the Ōtaki economy.

## 6.4 Environmental Concerns

**Climate change planning** — Discussions about climate change planning and environmental protection align with Vision Ōtaki feedback on protecting natural spaces and preparing for climate-related challenges.

**Biodiversity** — Calls for increased tree planting and green space preservation, mirroring sentiments in the Vision Ōtaki feedback.

## 6.5 Housing & Development

**Housing diversity** — Need for diverse housing options, including social housing and homes for older people.

**Development balance** — Concerns about balancing development with character preservation, echoing Vision Ōtaki feedback.

## 6.6 Community Engagement & Governance

**Māori engagement** — Calls for increased consultation with iwi and local groups, relevant for the significant Māori community in Ōtaki.

**Community input** — Desire for greater community involvement in decision-making processes.

## 6.7 Sports & Recreation

**Waka Ama facilities** — Request from the Ōtaki Waka Hoe Charitable Trust for support in developing waka ama facilities at Ōtaki Lake, aligning with Vision Ōtaki emphasis on supporting community sports and outdoor activities.

These insights from the LTP process reinforce many of the priorities identified in the Vision Ōtaki engagement, providing a strong foundation for future planning and decision-making in Ōtaki. They highlight the importance of balancing development with environmental protection, enhancing community facilities and services, supporting local businesses, and ensuring strong community involvement in shaping the future of Ōtaki.

## 7 Needs Assessment: Insights from Kāpiti young people

This section of the report presents a summary of the key insights gathered from the Needs Assessment: Insights from Kāpiti young people. The assessment focused on young people who are or have been involved in Zeal's core programmes, such as afternoon hangs, creative programmes, events, and college representatives. In particular, it sought to understand the experiences, challenges and suggestions of young people from Ōtaki, as well as the impact of Zeal on participants and its ability to address their concerns.

The Needs Assessment: Insights from Kāpiti Young survey collected data through two methods:

- Annual survey: Conducted over 12 months, with 74 participants.
- Follow-up survey: Completed by 20 respondents.

The combined efforts yielded feedback from 94 youth involved in Zeal's programmes, aiming to understand their experiences, challenges, and needs. This survey was conducted by Zeal as part of requirements of its contract with the Council.

The feedback provided indicated that Zeal Ōtaki is valued by young people as a welcoming and inclusive space that offers multiple benefits. It provides an opportunity to socialise and connect with friends outside the home environment. Youth appreciate it as a place free from family pressures and unrealistic responsibilities. The space offers activities and things to do, creating a fun and engaging atmosphere. Overall, Zeal Ōtaki serves as a positive, supportive environment for young people to gather, have fun, and receive help when needed.

Through the survey youth in Ōtaki have expressed several key desires for their future, these include:

- **Expanded Youth Spaces** — There's a call for larger youth-oriented areas and more frequent Zeal days in Ōtaki, building on the success of current offerings.
- **Community Connections** — Young people want more opportunities to connect with the wider community, including adults and older youth, with Zeal seen as a positive example of this.
- **Outdoor & Active Pursuits** — There's interest in more groups organising active outdoor activities and fun trips to various locations.
- **Mentorship & Support** — Youth desire in-school mentors to provide support during challenging times.
- **Skill Development** — There's a demand for diverse courses that build practical skills for future employment, such as the coffee course mentioned.

- **Improved Transportation** — Better transport options for returning to Ōtaki after events are needed.
- **Peer and Community Engagement** — Activities that foster connections with peers and the broader community are desired.
- **Teen-Specific Spaces** — There's a need for more areas designed specifically for teenagers, as current parks mainly cater to children or skaters.

**Produced by PublicVoice Limited**

**Suite 2, 5 Bouverie Street**

**Petone**

**Lower Hutt, 5012**

Ph: (04) 909 7463

Email: [info@publicvoice.co.nz](mailto:info@publicvoice.co.nz)

The views expressed in this report are those of the author(s) and do not necessarily reflect the position of the Kāpiti Coast District Council. The Kāpiti Coast District Council does not accept any liability for claims arising from the reports content or reliance on it.