



Vision Paekākāriki

Summary Report
November, 2024

About PublicVoice

PublicVoice Limited is a leading research and engagement consultancy headquartered in Wellington, New Zealand. We concentrate on public policy research and consultation, providing services to various local and central government agencies throughout New Zealand. To learn more about our work, please visit www.publicvoice.co.nz.

Version:	V1.0
Date:	5 November 2024
Author(s):	Jared Bothwell

Contents

Contents.....	1
1 Executive summary	3
1.1 Why Vision Kāpiti 2060?	3
1.2 Overview of Vision Paekākāriki engagement and feedback	3
1.3 Central Themes.....	8
2 A summary of all feedback on Vision Paekākāriki.....	10
2.1 Place.....	11
2.2 People	20
2.3 Partnership.....	35
2.4 Comparison of Vision Paekākāriki and Vision follow up survey results	37
3 Data analysis methodology	39
3.1 Survey data analysis.....	39
3.2 Key findings analysis	39
3.3 Reporting.....	39
Phase One: Gathering initial views	40
4 Vision Paekākāriki survey.....	40
4.1 Why Paekākāriki? What's your connection to Paekākāriki?.....	41
4.2 How does it make you feel when you come home to the village?.....	43
4.3 How do you get to/around Paekākāriki? & is this different to how you would want to, in an ideal world?	44
4.4 What do you love most about Paekākāriki?.....	46
4.5 What do you see as being most distinctive about the village?	47
4.6 How would you like Paekākāriki to look and feel?	49
4.7 How do you want Paekākāriki to be known by those who don't have the privilege of living here?	52
4.8 What kind of community spirit would we like to see and how would we like this to manifest?	54
4.9 What would you love for children? For elderly?.....	55
4.10 If you had a generous pot of money, what is it that would make all the difference?.....	56
Phase Two: Testing what we have heard so far	60
5 Vision follow up survey	60

Vision Paekākāriki — Summary Report

5.1	Does this reflect what's important to you?	60
5.2	Is there anything missing?	62
	Broader community engagement.....	65
6	Relevant Insights from the Long-Term Plan Process.....	66
6.1	Infrastructure & Safety	66
6.2	Housing & Social Services:.....	66
6.3	Historical & Cultural Preservation.....	66
6.4	Climate Action & Environmental Concerns	67
6.5	Financial Management & Rates	67
6.6	Community Engagement & Governance.....	67
6.7	Community Services	67
7	Paekākāriki: What next? Planning for vibrant, equitable and sustainable village life after the opening of Te Ara Nui Te Rangihaeata.	68
8	Takutai Kāpiti	70
8.1	What do you value most about living in this area?	70
8.2	How important is our coastline to you?	72
8.3	How concerned are you about coastal hazards like erosion and flooding, and why?	74
8.4	How do you think our coastline should be protected?	76

1 Executive summary

1.1 Why Vision Kāpiti 2060?

A clear district-wide vision will help guide planning, decision making, programmes, services, and advocacy, for decades to come.

Elected members want to hear from their communities, about what matters most, what change people want to see and their aspirations for the future of our district.

The first stage is to develop a Vision for the district and its underlying communities.

This will be followed by two further stages:

- Identifying and testing pathways and priorities for achieving our Vision; and finally,
- Developing a blueprint for action, mapping out our key steps and moves to realise our Vision.

Once complete, the Vision and blueprint will outline what things will be prioritised over the next 30 years (to 2060), and how Council will work with its iwi partners, central and local government, and key stakeholders to achieve our collective Vision.

This process will replace the Local Outcomes Statements developed across the district from 2007 - 2017.

1.2 Overview of Vision Paekākāriki engagement and feedback

The Community Board has worked to capture feedback from the Paekākāriki to help shape and refine Vision Paekākāriki. This has occurred in two phases of engagement.

Phase One: Gathering initial views

From August to December 2023 feedback was captured from local Paekākāriki residents through:

- An online survey of 10 questions identifying aspects from what makes Paekākāriki special to current and future needs and aspirations. The survey was advertised through local networks including a postcard delivered to every household in the village. 63 contributors' responses with 618 feedback points

- Discussions at the Paekākāriki Market on 5 August 2023 on how residents would like a future Paekākāriki to look and feel, and what investments would help make a difference. 34 responses from about 25 individuals
- Engagement with all year 6-8 students at Paekākāriki School on what they like; and would change in Paekākāriki; and what they would spend money on to make a difference. 19 responses (group posters) with 86 feedback points
- Consultation with the Paekākāriki Housing Trust. 1 response identifying a range of housing needs in the community

This feedback was summarised and presented to local communities for further testing as part of Phase Two. This included a detailed report which summarised feedback from all sources, and feedback received on local survey questions.

Phase Two: Testing what we have heard so far

From April to July 2024 the summary of feedback from Phase One was shared to test whether what had been captured so far reflected what was important and if there was anything missing.

Further feedback was captured from engagement during this period including:

- An online survey asking if what is captured so far reflects what's important and if there is anything missing. 96 responses with 181 feedback points
- Feedback from a leaflet drop to all households in the village and workshop help in St Peters on 15 May 2024. 25 people attended with 23 feedback points.
- Session with Paekākāriki school students. 52 responses with 85 feedback points.

Broader community engagement

In addition to the above engagements, the Community Board has sought to engage and seek feedback with residents through a number of other ways including:

- Letterbox flyer drops
- Posters at local businesses
- Facebook messaging
- Discussions at market days and with locals at other events.

Other community feedback included

In addition to feedback on the Vision process, several recent community engagements have provided feedback on what's missing or important for the Paekākāriki area. By incorporating these supplementary sources, we gain a more comprehensive understanding of community priorities and concerns. This multi-faceted approach allows us to identify recurring themes across different engagement processes, providing a robust foundation for the future vision. This includes:

- | | |
|---|---|
| • Long Term Plan 2024-2034 feedback. | Key insights identified from the full set of feedback (371 responses with 1,598 feedback points) |
| • Paekākāriki: What next? - Planning for vibrant, equitable and sustainable village life after the opening of Te Ara Nui Te Rangihaeata | 26 qualitative, semi-structured interviews, 2 focus groups with primary school children, and 2 participatory development workshops. |
| • Feedback on values received in the Takutai Kāpiti Project. | 175 responses with 598 feedback points |

The inclusion of Long-Term Plan insights offers valuable context on infrastructure priorities, financial considerations, and community initiatives. The "Paekākāriki: What next?" project provides crucial perspectives on the village's adaptation to recent changes and future aspirations. Meanwhile, the Takutai Kāpiti feedback offers important insights on coastal management and environmental priorities. Together, these additional sources enrich and validate the themes identified in the primary Vision Paekākāriki engagement, ensuring a holistic view of community aspirations.

This comprehensive approach allows us to capture the unique character and needs of Paekākāriki, from its strong sense of community and cultural heritage to its

environmental concerns and desire for sustainable development. The resulting themes reflect a balance between preserving the village's cherished qualities and adapting to future challenges and opportunities.

This report

This report provides an overview of all feedback shaping Vision Paekākāriki.

This includes:

- Consolidated findings from all feedback sources.
- A summary of the 'Phase One' local survey results.
- A summary of 'Phase Two' feedback on what's important and any gaps identified.
- A summary of insights from additional information sources, including:
 - Long Term Plan 2024-34 consultation, which covered topics such as infrastructure priorities, financial management, housing, and community initiatives.
 - The "Paekākāriki: What next?" participatory project, which explored local perspectives on the impact of the new road opening and future aspirations for the village.
 - Takutai Kāpiti coastal adaptation project, which focused on coastal hazards, community values related to the coastline, and preferences for coastal protection strategies.

The engagement data analysis has been structured using the framework of the Council's Doughnut Economic Framework. This model provides a holistic view of the community's well-being, considering social, cultural, environmental, and economic factors. The key findings are organised into themes that align with the various dimensions of the Doughnut Framework.

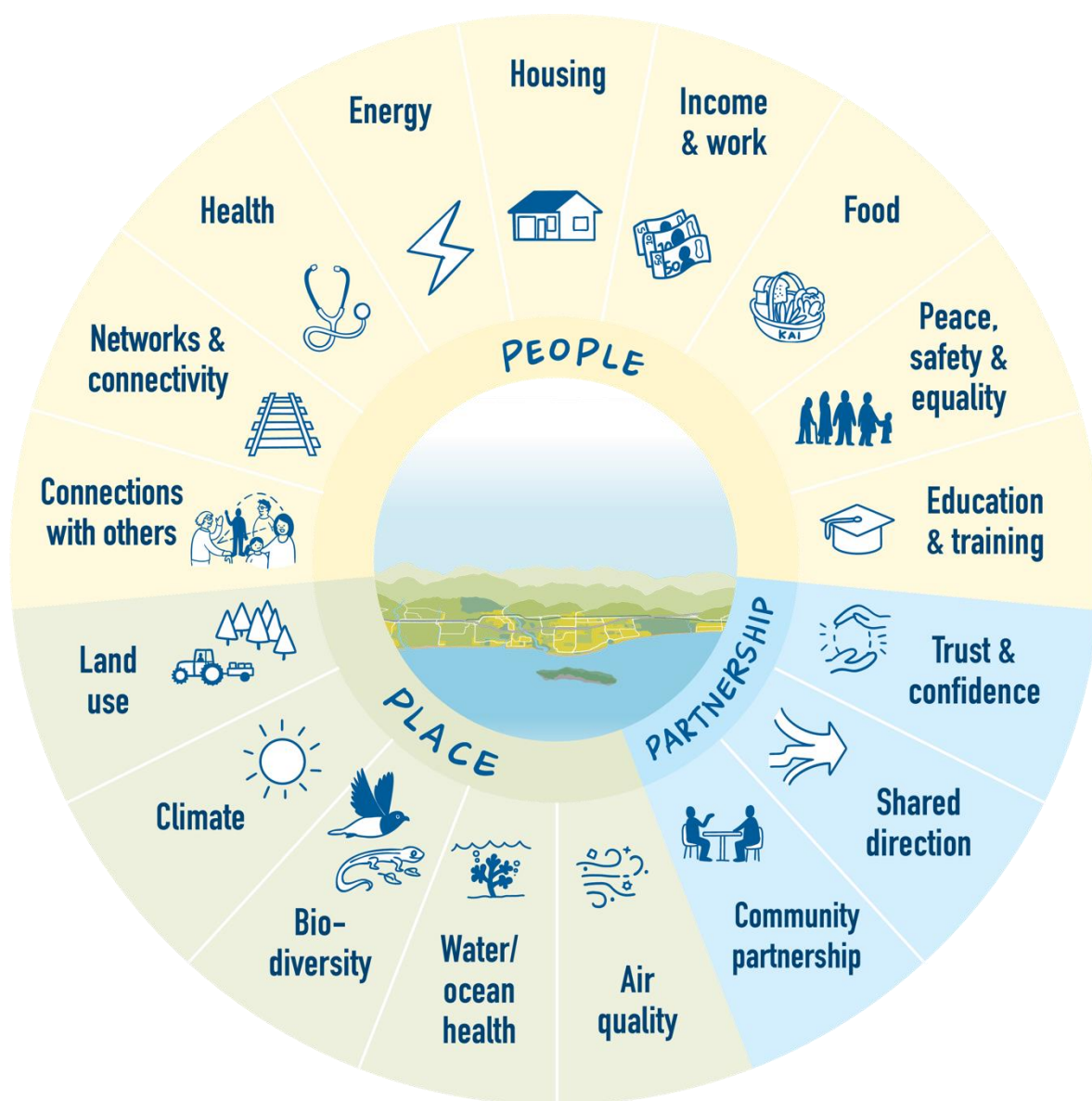


Figure 1: The Doughnut Economic Framework

1.3 Central Themes

This section summarises the key findings that emerged from the community engagement process. It highlights the dominant priorities and aspirations expressed by the residents of Paekākāriki across various domains of the Doughnut Framework.



Aiowhaitika mō te tangata | Peace & Safety: Residents value the village's safe, friendly atmosphere and quiet, secure living environment. They emphasise the importance of maintaining this peaceful setting while addressing concerns about potential increases in crime. Suggestions include improving road safety through speed limits and safer pedestrian/cyclist access and enhancing community watch programs.



Te hononga ki ētahi atu | Connections with others: The community strongly values the unique character, historical significance, and strong sense of community in Paekākāriki. Residents appreciate the village's diversity, creativity, and inclusive nature. They prioritise maintaining the friendly, welcoming atmosphere and fostering community initiatives and events. There's a desire to preserve the village feel while enhancing recreational facilities and spaces for all ages, particularly for youth and elderly residents.



Hanga Whare | Housing: Key priorities include increasing the availability of affordable and eco-friendly housing options, especially for families, young people, and the elderly. There's support for initiatives like the Paekākāriki Housing Trust and calls for more diverse housing solutions to maintain the village's multigenerational character. Concerns about rising housing costs and their impact on community diversity are prominent.



Hauora | Health: Residents highlight the importance of accessible healthcare, including the desire for local medical facilities such as a doctor's surgery or community health centre. There's a strong emphasis on promoting mental health and overall well-being, with recognition of the therapeutic benefits of the coastal environment.



He Waka eke noa/A Shared Waka | Community Partnership: The community values strong engagement in local decision-making processes. There's a call for improved council planning, transparency, and action, particularly regarding long-term projects like the seawall. Residents emphasise the importance of community-led initiatives and the need for better communication channels between the Council and the community.



Mātauranga | Education & Training: The community desires improvements in local education facilities, including expanding the school, establishing new early childhood centres, and providing more diverse learning opportunities for all ages. There's also interest in environmental education and programs that connect with local ecology and culture.



Ngā Hono | Networks & Connectivity: Key focus areas include improving infrastructure for walking and cycling, enhancing public transport (particularly train services), and addressing road safety. Residents call for better maintenance of existing infrastructure and support for sustainable transport options. There's also a desire for improved digital connectivity and waste management systems.



Ohunga | Income & Work: The community prioritises developing the local business sector, particularly in retail and hospitality. There's strong support for local businesses and social enterprises, with calls to revitalise vacant properties and enhance the village's appeal to both residents and visitors. Balancing economic development with preserving the village's unique character is a key concern.



Whakamahi/Hauora Whenua | Land Use & Quality: Major considerations include adaptation to sea level rise, promoting sustainable development, and preserving the village's low-density character. There's significant discussion around coastal protection measures, particularly regarding the seawall project, with diverse opinions on the best approaches to balance protection, cost, and environmental impact.



Climate & Change: The community shows strong support for climate action initiatives and environmental protection measures. This includes an interest in renewable energy projects, sustainable housing developments, and community-wide efforts to reduce environmental impact.

2 A summary of all feedback on Vision Paekākāriki

This section provides more detail on views for areas of the Doughnut Framework, representing key needs for the community. In this section, the most common topics that emerged from the community feedback are highlighted for each theme, along with supporting quotes or discussion points. These insights shed light on the Paekākāriki community's values, priorities, and concerns, offering valuable guidance for the Council's decision-making processes and future planning efforts.



2.1 Place



Āhurangi | Climate feedback highlighted diverse views on climate change and environmental issues. Key themes included concern about climate impacts, support for mitigation and adaptation strategies, focus on sustainability and natural spaces, and varying opinions on sea level rise threats. Participants emphasised the need for sustainable energy, waste management, and coastal protection whilst also valuing local environmental assets.

The most common themes that emerged from community feedback were:

Efficient waste management & recycling systems

Community feedback on waste management and recycling in Paekākāriki highlights concerns about the current system's efficiency. Residents express frustration with multiple waste collection providers operating in the small village, citing this as inefficient and costly. There's a desire for improved recycling facilities and more frequent collections. Some suggest implementing a council-run rubbish collection service to replace the current private providers. Concerns are raised about noise pollution from frequent collections by different companies. Several comments mention the need for better management of septic tanks, with some residents opposing a shift to mains sewage due to cost and potential impact on the village's character. Overall, there's a call for a more streamlined, cost-effective, and environmentally friendly waste management system.

Upgrade & build seawalls

Community feedback shows strong support for upgrading and maintaining the Paekākāriki seawall, seen as essential for coastal protection. Opinions vary on design, with some favouring rock ramps and others engineered concrete structures. Residents call for extending the seawall and taking a coherent approach along the coastline. There's frustration over delays and desire for quick action. Some view seawalls as a short-term solution, whilst others want private seawalls included in planning. Cost concerns and debates over natural vs engineered protection methods are also evident.

Enjoy the local climate & weather

Community feedback regarding local climate and weather is generally positive. Residents appreciate the area's temperate coastal climate, which is noted to be milder and more pleasant than central Wellington. Many comments highlight the enjoyment of outdoor activities facilitated by the local weather, including beach visits, swimming, and walks in nearby natural areas. Some residents mention the connection between weather patterns and the coastal environment, appreciating the dynamic nature of sea and sky. There's recognition of the need to adapt to climate change impacts, particularly regarding sea level rise and more frequent extreme weather events. Overall, the local climate is seen as a significant asset contributing to the quality of life in Paekākāriki.

Other key themes included:



- Climate change concern
- Enhance natural spaces.





Hauora Awa/Moana River/Ocean Health

Hauora Awa/Moana | River/Ocean Health related feedback revealed strong community ties to coastal and river environments, with concerns about erosion, ecosystem health, and water quality. Residents expressed mixed views on coastal protection, balancing support for improved defences against worries about natural processes. Key priorities included maintaining water systems, beach management, and exploring new protection technologies, while considering costs and environmental impacts.

The most common themes that emerged from community feedback were:

Proximity to the seaside, beaches & ocean

Community feedback overwhelmingly values the proximity to the seaside and beaches. Residents cherish easy access to the coast, viewing it as integral to the village's identity and their quality of life. Many highlight daily beach activities like swimming, walking, and socialising as crucial for physical and mental well-being. The coastline is seen as a defining feature, providing scenic beauty and recreational opportunities. There's strong desire to maintain public access and protect the shoreline from erosion. Some concerns are raised about balancing enjoyment with conservation, particularly regarding wildlife habitats. Overall, the seaside proximity is considered a primary reason for living in Paekākāriki, deeply embedded in the community's lifestyle and values.

Support for improved & additional seawalls

Feedback shows strong community support for improving and extending seawalls in Paekākāriki, seen as crucial for coastal protection. Many residents urge prompt action, expressing frustration over delays. Opinions vary on design, from rock ramps to engineered concrete structures. There's emphasis on a coherent, long-term approach to coastal protection, including consideration of private seawalls. While some concerns about costs and environmental impacts are noted, calls for enhanced protection generally prevail. Many view seawall upgrades as a priority for the community.

Maintain stormwater & wastewater systems

Feedback shows mixed views on stormwater and wastewater systems. Some residents advocate for connecting to mains sewage, citing environmental and health concerns. Others prefer maintaining existing septic tanks to preserve village character and limit development. There's a general call for better management of current systems and improved water quality monitoring, especially during storms. Concerns about environmental impact and costs are noted. Overall, there's a desire for improved waste management, but disagreement on the best approach to balance modernisation with preserving local character.

Other key themes included:



- Support for R&D of new technology
- Support for traditional and natural coastal defences.





Kanorau Koiora Biodiversity

Kanorau Koiora | Biodiversity related feedback shows that the community expressed strong support for environmental conservation, valuing local natural assets like beaches, parks, and wildlife habitats. Priorities included protecting and expanding green spaces, dune restoration, native planting, and pest control. Residents emphasised the importance of wildlife protection, biodiversity regeneration, and balancing development with preservation. There was particular interest in birdwatching and concerns about specific areas like Queen Elizabeth Park. Overall, the community showed a deep commitment to the natural environment.

The most common themes that emerged from community feedback was:

Proximity to nature

Feedback highlights the critical importance of proximity to nature. Residents deeply value access to the beach, ocean, Queen Elizabeth Park, and surrounding hills. The village's setting between sea and land is seen as integral to its character. Local wildlife, native plants, and diverse ecosystems are cherished. Many emphasise the positive impact of this natural environment on well-being and community identity.

Protect beaches & waterways & green Kāpiti

Feedback reveals strong community support for protecting the beaches, waterways, and green spaces. Residents highly value the coastal environment and advocate for dune restoration, marine reserves, and sustainable coastal management. There's emphasis on preserving streams, wetlands, and native vegetation. Suggestions include enhanced pest control, native planting initiatives, and eco-friendly development. Many see these natural assets as crucial to local character and residents' well-being. Overall, there's a clear desire to preserve and enhance the local environment for future generations.



Enjoy visiting local parks & reserves

Feedback indicates strong appreciation for local parks and reserves in Paekākāriki, particularly Queen Elizabeth Park. Residents value these spaces for recreation, relaxation, and connecting with nature. The parks are seen as vital community assets, offering opportunities for walking, cycling, and wildlife observation. Many comments highlight the importance of easy access to these green spaces from the village. There's enthusiasm for enhancing park facilities and trails, with suggestions for wetland development and improved connections to surrounding natural areas. Overall, local parks and reserves are viewed as essential to residents' quality of life.

Other key themes included:

- Promote our natural assets to visitors
- Support for increased planting.





Wai | Water related feedback revealed significant concerns about water management and quality. Residents expressed worries about water infrastructure, sewage system vulnerability, and overall water supply. There was a call for improved water management practices and increased access to clean drinking water, including a suggestion to add more public water fountains. Some members of the community supported fluoridation of drinking water. The overall focus was on addressing water quality issues and ensuring robust, reliable water infrastructure for the area.

The most common themes that emerged from community feedback were:

Increase the number of water fountains

Feedback indicates a desire for more water fountains and water bottle refill stations in Paekākāriki and the wider Kāpiti area. Several comments specifically request additional water fountains, highlighting this as a practical improvement for the community. The suggestions appear to be motivated by convenience, encouraging hydration, and possibly reducing single-use plastic bottle waste. While not a dominant theme in the overall feedback, the repeated mentions suggest it's a notable concern for some residents, particularly in public spaces and along frequently used routes.

Address concerns around water quality & water management

Feedback reveals significant concerns about water quality and management in Paekākāriki. Residents worry about septic tank pollution affecting groundwater and waterways, with many advocating for connection to mains sewage. There's a call for regular water quality testing, especially during storms. Some suggest investing in residential water tanks and a local water system for better management. The lack of fluoride in drinking water is a concern for some, particularly regarding children's dental health. Overall, there's a strong desire for improved water infrastructure and management to protect public health and the environment.





Whakamahi/Hauora Whenua Land Use & Quality

Whakamahi/Hauora Whenua | Land Use & Quality related feedback indicates that the community expressed diverse views on coastal management and development. Key concerns included erosion, flooding, and the cost of interventions. The coastline was widely recognised as crucial to the District's identity and geography, with strong support for protecting public infrastructure and preserving local character. Opinions varied on managed retreat as an option for housing threatened by sea level rise, with some supporting it and others opposed. Residents valued low-rise buildings and low-density development, while expressing concern about high-risk coastal construction. There was interest in a balanced, case-by-case approach to development that considers intensification while preserving community character.

The most common themes that emerged from community feedback were:

Concern about erosion & flooding

Feedback reveals mixed levels of concern about erosion and flooding in Paekākāriki. Many residents express significant worry about coastal erosion threatening homes and infrastructure, particularly along The Parade. Some call for immediate action on seawall improvements. Flooding is mentioned less frequently, but low-lying areas are noted as vulnerable. Overall, there's a desire for balanced, long-term planning that considers both protection and potential adaptation strategies.

No concern about erosion & flooding

A minority of residents express little to no concern about erosion and flooding in Paekākāriki. These individuals argue that historical evidence shows minimal changes to the coastline over decades, with some even noting increased sand dunes in certain areas. They view erosion as a natural, manageable process and are sceptical of climate change projections. Some claim there's no evidence of significant coastal flooding impacts. This group often criticises what they perceive as alarmist attitudes from authorities and opposes extensive interventions or managed retreat scenarios, preferring to maintain the status quo or implement minimal, traditional protection measures.



Concern about general costs

Feedback highlights significant concern about the potential costs associated with addressing coastal hazards in Paekākāriki. Residents worry about the financial burden on ratepayers for large-scale projects like seawall improvements or managed retreat. There's anxiety about property values and insurance costs, with some fearing long-term economic consequences. Questions arise about who will bear the costs - individual property owners or the wider community. Some express frustration over perceived wasteful spending on consultations without concrete actions. Overall, there's a clear desire for cost-effective, equitable solutions that balance protection needs with financial realities facing the community.

Other key themes included:



- The importance of the coastline and how it defines Kāpiti geography
- Support for protection of public infrastructure
- Address the land restitution claim of Miriona Budge.

2.2 People

Below is the summary of key findings related to 'People'.



Aiowhaitika mō te tangata Peace & Safety

Aiowhaitika mō te tangata | Peace & Safety related feedback highlighted safety and quality of life as key priorities. Residents valued the area's peaceful atmosphere, natural beauty, and sense of space. They appreciated the low traffic levels and overall safety. However, some expressed concerns about potential increases in crime and called for enhanced police presence. There was a desire to maintain and improve safe community spaces while fostering better intra-community relationships. Overall, preserving the quiet, secure living environment was seen as crucial to the area's appeal.

The most common themes that emerged from community feedback were:

Improve safety

The community values the safe, friendly village atmosphere and wants to maintain or enhance this.

Suggestions include improving road safety through speed limits, speed humps, and safer pedestrian/cyclist access. However, there are some concerns about burglaries and car theft, with suggestions for increased crime prevention measures like neighbourhood watch groups and police presence.

Enjoy the relaxing & peaceful atmosphere

Residents enjoy the relaxed, peaceful vibe and unhurried way of life. They appreciate the quietness, especially since Transmission Gully opened, and the feeling of being a small, friendly village with a strong sense of community. The beach and natural

environment contribute to the tranquil atmosphere, with people valuing the sound of the sea, the coastal views, and open spaces. Maintaining this laid-back character is important to the community.

Area is safe & secure

The community consistently highlights safety and security as key attributes they value about Paekākāriki.

Residents appreciate the low crime rates and feeling of safety in the village, with kids able to roam freely and play outside. The friendly, tight-knit community where people look out for each other enhances the sense of security.

Other key themes included:

- Improving intra-community relationships
- Importance of space and freedom.



Te hononga ki ētahi atu Connections with others

Te hononga ki ētahi atu | Connections with others feedback revealed a strong desire to promote and maintain the village's friendly, small-town character whilst fostering inclusivity and diversity. Residents value the sense of belonging, welcoming community, and proximity to friends. They appreciate local arts and culture, expressing support for collaborating with local artists, hosting cultural events, and creating art walks. The community emphasises the importance of upgrading and maintaining public amenities such as parks, playgrounds, libraries, and recreational areas for all ages. There is a call for developing youth-focused activities and facilities, as well as improving accessibility and support for the elderly, disabled, vulnerable, homeless, and sick. The community also recognises the significance of local and iwi history, suggesting collaboration with Tangata Whenua and the growing Māori community to improve cultural understanding and support. Residents express interest in creating community spaces, such as gardens and gathering areas, and building a community hub.

The *Paekākāriki: What next?* project also identified key changes since the new road opened, including a quieter, more peaceful village, Beach Road's potential as a social hub, and the need to restore Māori identity and engage youth. Proposed strategies focus on enabling community use of public spaces, developing a youth-led vision, supporting sustainable Ngāti Haumia leadership, enhancing Beach Road as a welcoming social hub through traffic calming and amenities. The report also emphasised restoring Māori identity, empowering youth, and improving social and physical amenities to serve the whole community after the road opening and transforming Paekākāriki into a more vibrant, equitable and sustainable place.



The most common themes that emerged from community feedback were:

Promote as a friendly village destination

Residents want Paekākāriki to be known as a friendly, welcoming village destination. They envision it being a relaxed coastal getaway with a vibrant, quirky, and creative atmosphere that draws visitors to its cafés, art galleries, beaches, parks, and walking/biking trails. Live music, events, and the unique St. Peter's Hall are seen as key attractions. People hope the village retains its inclusive, accepting vibe and becomes a place where all sorts of people want to come spend time and money while respecting the special character of the community.

A friendly community with a Sense of belonging

Paekākāriki residents deeply value the strong sense of community and belonging in the village. They describe it as a friendly, tight-knit community where people look out for and care about each other. The small size fosters connection, with residents appreciating that they know their neighbours and can be as involved as

they wish. People highlight the many community organisations, initiatives, and events that bring residents together and create a feeling of inclusion. There is a desire to maintain this warm, supportive, and connected atmosphere where everyone feels they are a welcomed part of the community.

Upgrade public amenities, such as parks & library

Residents value public amenities and see opportunities for upgrading them to better serve the community. Suggestions include expanding the library's resources and kid-focused activities, improving the skate park, developing an additional playground at the school, and adding amenities like water fountains and public toilets at parks and the beach. Enhancing sports facilities and playgrounds is also mentioned. People note the importance of well-maintained, accessible spaces for all ages to gather and enjoy. Realising the potential of existing facilities like the surf club and Memorial Hall through upgrades is another common theme.



Other key themes included:



- Maintain small-town character and status quo
- Create and maintain inclusive spaces
- Development of youth-focused activities and facilities.

Hanga Whare Housing

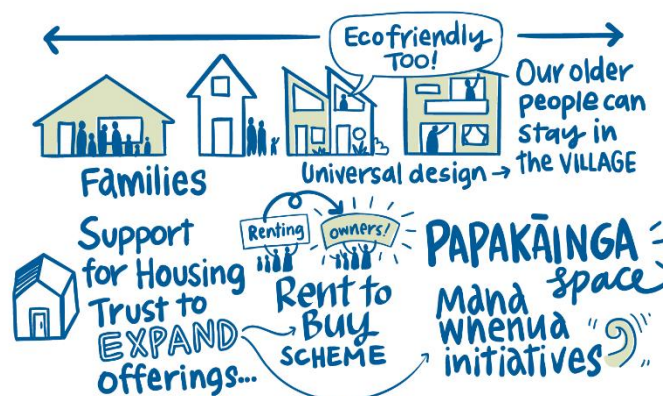
Hanga Whare | Housing revealed concerns about housing affordability and supply, with support for strategies to ensure accessible and affordable housing options. Residents emphasised the need to focus on increasing housing supply, building more retirement homes, and improving housing solutions. There were concerns about rising property rates, potential property loss or damage, and the impact on property values and insurance. The community expressed support for protecting existing coastal properties while also encouraging the development of housing above shopping centres. Residents also highlighted the importance of social housing and reducing costs associated with housing development. Some concerns were raised about gentrification in Paekākāriki and the need for housing regulations. Overall, the community wishes to encourage long-term residents and maintain a focus on sustainable housing development.

The most common themes that emerged from community feedback were:

Strategies to ensure housing is affordable

The community strongly emphasises the need for strategies to ensure affordable housing in Paekākāriki. Many residents express concern about gentrification and rising housing costs forcing out families, young people, and long-term residents. Suggestions include increasing council housing stock, particularly for elderly; supporting initiatives like the

Paekākāriki Housing Trust to acquire properties; enabling smaller dwellings and subdivisions; and lobbying for policies that boost affordability. Providing affordable housing options is seen as critical for maintaining a diverse, multigenerational community and allowing groups like mana whenua to remain in the village.



Focus on increasing housing supply

Residents highlight the importance of increasing housing supply in Paekākāriki to address affordability concerns and accommodate a diverse population. Suggestions include building more council-owned rental units, particularly for elderly, on underutilised land near transportation and amenities. Enabling subdivision of existing lots and streamlining consents for tiny homes and secondary dwellings are also mentioned.

Intensifying housing near the train station with eco-friendly apartments is another proposal. The community wants policies and initiatives that incentivise the creation of new housing stock to provide options for families, young people, and lower-income residents to live in the village.

Build more retirement homes

Some residents suggest building more retirement housing in Paekākāriki to allow elderly to continue to live in the area. They note the village currently lacks a retirement village, which can lead to older residents leaving. Ideas include adding units to existing council flats on Wellington Road and developing underutilised land near transportation and amenities. Keeping kaumatua in the community is seen as important.



Other key themes included:

- Concern about property value and insurance
- Increase accessible housing
- Support for protecting existing coastal properties.





Hauora | Health feedback highlighted the importance of improving mental health and wellbeing, with a focus on establishing local healthcare facilities and enhancing access to services. Residents expressed concern about the impact on both mental and physical health within the community. There is a desire for improved healthcare facilities and services, including better access to GP services, hospital services, and the establishment of a local vet. The community also emphasised the need to enhance parks with amenities such as water fountains to promote overall wellbeing. Improving access to healthcare facilities and prioritising mental health and personal wellbeing were identified as key areas of concern for the community.

The most common themes that emerged from community feedback were:

Improvements in mental health & wellbeing

Paekākāriki residents emphasise preserving access to the therapeutic benefits of the coast, developing community spaces for all ages to foster connection, providing local mental health services, nurturing an inclusive and engaged community spirit, and building resilience to the psychological impacts of climate change, particularly eco-anxiety among youth.

Establishment of local healthcare facilities

Residents express a desire for local healthcare facilities in Paekākāriki to improve access to medical services. Suggestions include establishing a doctor's surgery or community health centre, potentially in a location like the old post office. The idea of having medical professionals like doctors, nurses or counsellors available within

the village is mentioned. A local pharmacy is also suggested. The convenience of these local health services is seen as beneficial for the community.

Concern about community wellbeing

Some residents express concern about the overall wellbeing of the Paekākāriki community, particularly in the face of challenges like climate change. The potential loss of the unique, tight-knit community due to rising costs and displacement is another concern. Fostering community resilience, maintaining social connections, and ensuring support is available for those struggling is seen as important for weathering difficulties and promoting collective wellbeing.



Kai Food

The feedback on Kai | Food revealed an appreciation for the variety of cafés and restaurants in the area, with residents enjoying the diverse dining options. There is strong support for encouraging investment in local shopping and dining establishments to further enhance the community's culinary scene. Residents also expressed enthusiasm for food fairs and festivals, which provide opportunities to celebrate local cuisine and bring the community together. Additionally, there is support for community gardens and local food production initiatives, highlighting the community's interest in sustainable and locally sourced food options.

The main themes that emerged from community feedback is:

Enjoy the variety of cafés & restaurants

Residents appreciate the variety of cafés and restaurants in Paekākāriki, which contribute to the village's relaxed, creative vibe. The cafés are seen as great spots for breakfast and bringing the community together. People enjoy being able to walk to the shops and cafés to connect with neighbours and find good company. The cute café environment is highlighted as a key part of local charm, alongside the beach, parks, and friendly community spirit.



Encourage investment in local shopping & dining

Paekākāriki residents want to encourage investment in the village's local shopping and dining scene. They appreciate the existing cafés and shops but see opportunities for growth. Suggestions include reinvigorating vacant shops, attracting businesses like an ice cream parlour or takeaway, and providing more visitor facilities. Parking improvements are seen as important so people can easily access local businesses. Residents also want to support entrepreneurs and keep money circulating within the community. Fostering a vibrant, thriving local economy centred around the village's shops and eateries is a priority.



Mātauranga Education & Training

Mātauranga | Education & Training related feedback highlighted the need for new educational facilities, such as schools and kindergartens or early childhood centres, to cater to the growing population. Residents expressed interest in having access to more educational courses and facilities, emphasising the importance of learning opportunities for all ages. The community also values environmental education, with support for initiatives such as coastal environmental learning programs and public information on coastal issues. Additionally, there is a desire to upgrade existing school playgrounds

The most common themes that emerged from community feedback were:

New schools & education facilities

Some residents express a desire for new schools and education facilities in Paekākāriki. Specific suggestions include establishing a kindergarten or childcare centre apart from the existing Playcentre, so young children can stay close to home even when their parents need to work. Expanding or upgrading the school playground is another idea. One resident envisions adding a college, sports facilities, and creative learning spaces. Attracting more Hill Road residents to the school is seen as a way to boost enrolment. Overall, investing in quality education options for all ages within the village is a priority for some.



More educational courses

A few residents mention the idea of offering more educational courses and learning opportunities in Paekākāriki. One person suggests establishing a chef's school or farm-to-plate program as part of a vision for a sustainable, innovative village. Another resident wants to support Wai Ata Studio's after-school arts program for local children. While not a major theme, there is some interest in expanding educational options and creative learning experiences for different ages within the community.

Other key themes included:

- Focus on environmental education.
- Opportunities for coastal environmental learning.



Ohunga Income & Work

Ohunga | Income & Work related feedback highlighted key areas for improvement, including encouraging investment in local shopping and dining, addressing vacant properties to enhance the town's appeal, and supporting local businesses and tourism initiatives. Residents wanted to see more efforts to promote dining options, improve the visual character of establishments, and develop tourism through new branding, while balancing concerns about affordability and local livelihoods. Overall, the feedback emphasised the importance of supporting the local business network and economy through measures like improved licensing, job creation and economic growth to sustain enjoyable shopping and dining experiences.

The most common themes that emerged from community feedback were:

Encourage investment in local shopping & dining

The feedback indicates strong support for enhancing the shopping and dining experience in Paekākāriki. Residents desire more diverse, vibrant, and inviting retail and eatery options, including filling vacant storefronts, adding colourful murals and decor, and attracting new businesses like a supermarket, bookstore, arts/crafts outlet, and waterfront café. Improving infrastructure like parking, pedestrian access, and the seawall are also seen as important to draw more visitors and support local businesses. Residents want Paekākāriki to become a destination for dining, shopping, and experiencing the community's unique character and natural beauty, while preserving its existing quirky charm.

Enjoyment of visiting local shops

The feedback highlights that residents currently enjoy the shopping and dining experience in Paekākāriki, praising the friendly local businesses, sense of community, and unique character of the village. Residents appreciate the "CBD vibe", with its collection of shops, cafés, and community hubs like the library and museum. The ability to shop and dine while being welcomed with children is also valued.



Address vacant properties & improve town appeal

The feedback highlights concern about vacant properties and a desire to improve the overall appeal of Paekākāriki. Residents want to see derelict and empty buildings revitalised, with suggestions to purchase unused properties and make them available for small businesses at low rents. There are calls to tidy up and better maintain the look of the village, including investing in landscaping, street trees, and public art. Improving pedestrian and cycling infrastructure, as well as addressing issues like overgrown vegetation, poor lighting, and lack of public amenities are also seen as ways to enhance the town's appeal. Residents want Paekākāriki to feel vibrant, well-cared for, and welcoming to both locals and visitors, preserving its unique character while modernising and revitalising key areas.

Other key themes included:



- Support for local businesses and groups
- Promote dining options
- Support the tourism industry and new branding.





Ngā Hono Networks & Connectivity

Ngā Hono | Networks & Connectivity related feedback highlighted a focus on developing more walkable and bike-friendly infrastructure, including extending and maintaining footpaths, walkways, cycleways and bridleways. There were calls to improve roads, public transport hubs, and traffic management to enhance road safety as car usage increases. Residents appreciated the local architecture and proximity to facilities, and supported investments in sustainable, accessible and reliable public transport. However, there were concerns about loss of infrastructure and a desire to further expand cycling and walking paths, improve parking, and enhance access to the beach and coastline. The community also wanted to see digital connectivity improved and waste management enhanced through measures like increased parking lots, a tramline, and pedestrianisation in certain areas.

The most common themes that emerged from community feedback were:

Development of walkable & bike-friendly paths

The feedback highlights a strong desire to make Paekākāriki more pedestrian and bike-friendly. Residents want to see improvements to existing walkways and the creation of new, dedicated cycling infrastructure to better connect the village and key destinations like the beach, parks, and the train station. Suggestions include separated bike lanes along main roads, improved paths and trails, and traffic calming measures like speed reductions. Accessibility for all users, including families, the elderly, and those with mobility challenges, is seen as important. Enhancing safety and connectivity for walking and cycling is viewed as a way to reduce reliance on cars, promote healthy lifestyles, and preserve the small-town character. Overall, the feedback emphasises

transforming the village into a more walkable, bikeable community that is welcoming to residents and visitors alike.

Improve roads

The feedback indicates a desire to improve local roads for safety and accessibility. Suggestions include addressing dangerous intersections with traffic lights, proper road maintenance like asphaltting, and traffic calming measures like speed humps or lower speed limits. Enhancing pedestrian and cyclist safety is a priority, through more crossings, lighting, and parking management to reduce main street congestion. Residents want local roads to be safe and user-friendly for all, while retaining the community's distinctive character.

Improve public transport & transport hubs

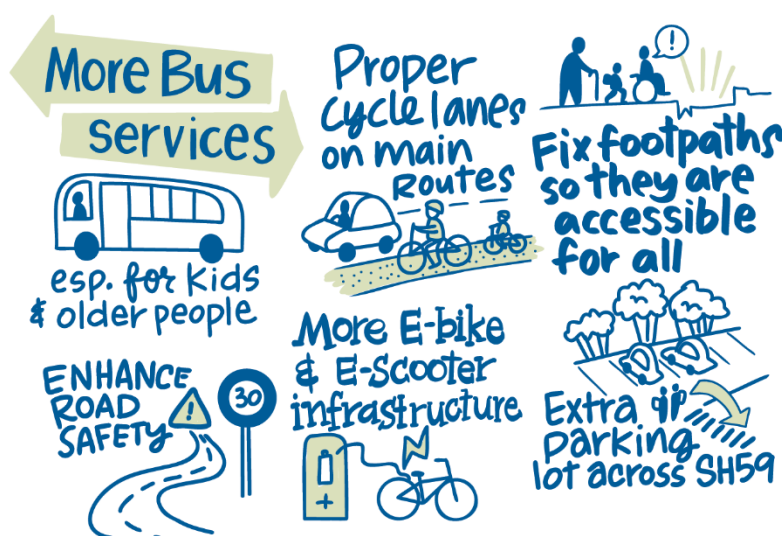
The feedback highlights the importance of public transport connections, particularly the train station, and a desire for improvements. Residents value the train's accessibility to Wellington but want more frequent off-peak services. Improving connections to the station, like more buses or shuttles, is seen as important, especially for those with mobility issues. Ensuring the station has amenities like a waiting room is also noted. Residents also express interest in exploring alternative

transport like e-bikes and ensuring safe, connected walking and cycling infrastructure, including bike lanes, walkways, and traffic calming. Overall, the feedback emphasises enhancing multi-modal transport to improve accessibility and sustainability.

Other key themes included:



- Extend and maintain cycleways
- Extend and maintain footpaths
- Infrastructure investment is needed.





Hihiri | Energy feedback highlighted a focus on promoting renewable energy initiatives. There was support for measures to encourage the use of hybrid and electric vehicles. However, there were also concerns expressed about the potential impact of renewable energy developments, such as wind turbines, on the power supply. Overall, the community feedback indicated a desire to see more support and promotion of renewable energy solutions, but with consideration given to potential impacts on the reliability of the local power grid.

The most common theme that emerged from community feedback were:

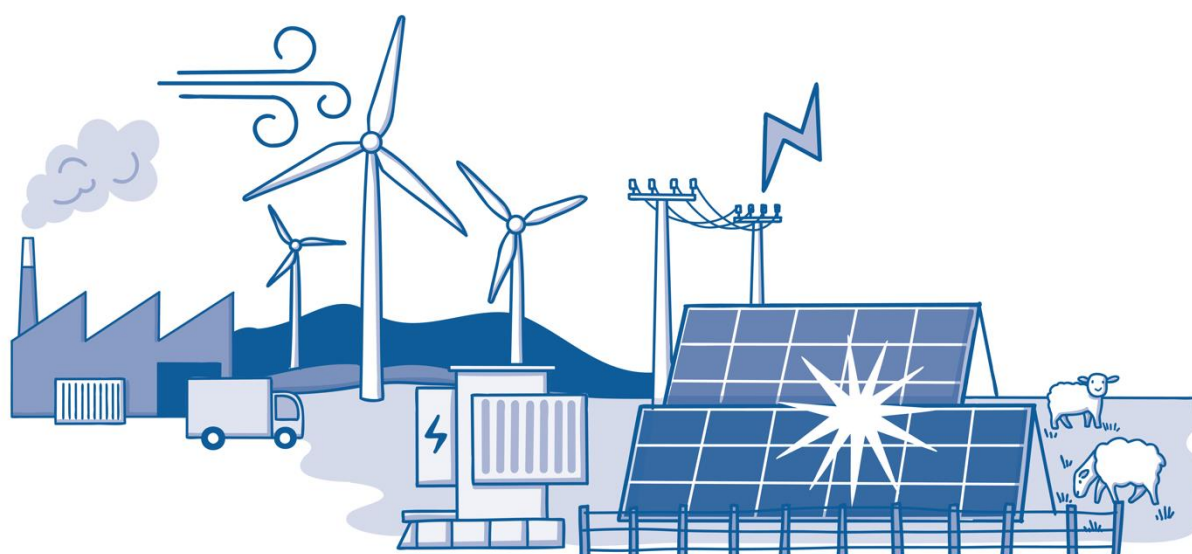
Focus on renewable energy

The feedback indicates a strong focus on renewable energy and sustainable community initiatives in Paekākāriki. Suggestions include installing solar panels on homes, a community battery to share excess solar power, and exploring wind power options. Residents want to see Paekākāriki invest in renewable infrastructure like a solar farm and energy batteries, as well as supporting local sustainability efforts through groups like the

Paekākāriki Community Housing Trust. Overall, the feedback emphasises Paekākāriki becoming a model of sustainable, self-sufficient living powered by renewable energy.

Other key themes included:

- Concern about the impact on power supply
- Opposed to wind turbines.





Ora Rite | Equality feedback highlighted a desire for an inclusive and equitable approach to protection and preservation efforts. There were concerns expressed about the distribution of protection costs, with a call for a more targeted funding approach. Residents wanted to ensure any protection measures considered the needs of diverse community members and the interests of both private and public assets. Overall, the feedback emphasised the importance of taking a balanced, future-focused perspective that promotes improved diversity and inclusivity in the community's protection and preservation strategies.

The most common themes that emerged from community feedback were:

Inclusive of diversity

The feedback highlights the importance of diversity and inclusivity within the Paekākāriki community. Residents value the village's unique mix of ages and backgrounds, describing it as a friendly, tolerant, and open-minded place. There is a strong belief in preserving this diversity and avoiding gentrification that could make the community less inclusive. Concerns are raised about the risk of Paekākāriki becoming a "retirement village for quirky, rich boomers", and the need for affordable housing is

emphasised to ensure it retains a mix of ages, incomes, and ethnicities. Supporting initiatives like the Paekākāriki Community Housing Trust and enabling greater mana whenua engagement are seen as key to maintaining the village's diverse, non-pretentious spirit. Overall, the feedback underscores the community's inclusive character as a core asset to be intentionally preserved.



Concern about distribution of protection costs

The feedback indicates concerns around the equitable distribution of costs for coastal protection measures in Paekākāriki. While there is recognition that seawalls and other mitigation efforts are needed, there are questions about who should bear the financial burden. Some residents express a willingness to share the cost of protection, noting the need for "community resilience." However, there are concerns that this could lead to unfair outcomes, with wealthier beachfront property owners potentially benefiting more than the broader community. The suggestion is made that for short-term mitigation (up to 50

years), the costs should be borne by the "affected" property owners, similar to existing arrangements. This is seen as a way to balance private and public interests, though it is acknowledged this could lead to tensions. Ultimately, the feedback highlights the desire for an equitable and transparent approach to funding coastal protection, where the distribution of costs does not disproportionately advantage certain groups, and adaptation strategies consider the broader community's wellbeing.

Other key themes included:

- Preservation for future generations.



2.3 Partnership

Below is a summary of the key findings related to 'Partnership'.



He Waka eke noa/A Shared Waka Community Partnership

The feedback on He Waka eke noa/A Shared Waka | Community Partnership highlighted significant concerns regarding the Council's planning, action, spending and consultation processes. Residents called for greater democratic inclusivity, collaboration and community involvement in decision-making, with a desire for medium to long-term planning that incorporates local and expert knowledge, learns from other examples, and promotes proactive mitigation through public-private partnerships. There was criticism of the consultation process itself, with a call for more inclusive and transparent engagement to strengthen community input. Concerns were raised about Council debt, bureaucracy, neglected regions, and impacts on low-income residents. Overall, the feedback emphasised the importance of improved council governance, enhanced communication, and a thriving, connected community that is supportive and heavily involved in coastal protection and decision-making.

The most common themes that emerged from community feedback were:

Concern about Council spending & rates increases

The feedback indicates significant concerns among Paekākāriki residents about the Council's spending and potential for rising rates. Residents are wary of the Council using ratepayer funds for new projects, arguing the priority should be reducing high debt levels before undertaking additional spending. Specific ideas like purchasing the old post office or providing e-bikes are viewed sceptically, with the sentiment the village already has adequate facilities

and transportation. Some go as far as stating their "vision is for the district to be debt free" and the Council should focus solely on essential services, not pursuing "wants" that could drive up rates. There is a strong preference to keep Paekākāriki as-is, with the view that those seeking more amenities should consider moving elsewhere. Overall, the feedback reflects deep concerns about the financial burden on ratepayers and a desire to maintain the village's modest character.

Concern about inadequate Council consultation processes, planning & action

The feedback expresses significant concerns about the Council's planning and actions, or lack thereof, in addressing key issues facing Paekākāriki. Residents feel the Council has wasted money on consultations that have led to little progress, particularly around the long-delayed seawall project. Feedback indicates a strong desire for the Council to improve its consultation methods, ensuring genuine community input and representation, and to leverage local knowledge and expertise to inform decisions affecting Paekākāriki. There are calls for the Council to take a more coherent, streamlined approach and to consult more transparently with the community. Specific concerns include the complex housing consent process, lack of action on community resilience to natural disasters, and inadequate planning for infrastructure like

wastewater that will be impacted by climate change. Overall, there is a sentiment that the Council is not adequately addressing the community's needs or leveraging the area's potential, and that a significant shift in approach is required. Residents want to see the Council provide clear leadership, make tangible progress on key issues, and work in close partnership with the community.

Other key themes included:



- Emphasis on democratic inclusivity and collaboration
- Support for medium and long-term plan
- Support for inclusion of local and expert knowledge.



2.4 Comparison of Vision Paekākāriki and Vision follow up survey results

This section presents the key similarities and differences between the Vision Paekākāriki Survey and the Vision follow up survey.

2.4.1 Key Similarities

Community connection — Both surveys highlight the importance of community spirit, inclusivity, and the desire to maintain the unique village character.

Environmental concerns — Both sections emphasise the community's focus on environmental conservation, including concerns about coastal erosion and the desire for sustainable development.

Housing issues — Affordable housing is a recurring theme in both surveys, with emphasis on the need for diverse housing options to maintain community diversity.

Infrastructure improvements — Both surveys indicate a desire for enhanced public amenities, improved transportation options, and better infrastructure.

2.4.2 Key Differences

New concerns — The follow-up survey introduces some new concerns not prominently featured in the initial survey, such as the need for fenced dog parks and increased lifeguard presence.

Emphasis on Council actions — The follow-up survey appears to place more emphasis on concerns about Council spending, rates increases, and the desire for focus on core services.

Specific project mentions — The follow-up survey specifically mentions projects like the Wainuiwhenua Project, which wasn't prominent in the initial survey findings.

Refinement of ideas — The follow-up survey seems to refine some of the broader ideas from the initial survey, focusing on more specific needs or concerns.

2.4.3 Implications for Vision Paekākāriki Refinement

Maintain core themes — The Vision should retain and potentially strengthen language around community connection, environmental stewardship, housing diversity and affordability, and infrastructure improvements.

Incorporate emerging concerns — Update the Vision to reflect new community priorities around specific amenities, safety measures, and quality of life issues.

Address fiscal responsibility — Include language that acknowledges the importance of responsible financial management and prioritisation of core services.

Reference community initiatives — Consider mentioning key community-driven projects to demonstrate responsiveness to evolving local priorities.

Increase specificity — Where appropriate, refine broader vision statements to reflect more specific community needs and desires identified in the follow-up survey.

Balance continuity and evolution — Craft a vision that honours longstanding community values whilst also demonstrating adaptability to changing needs and priorities.

Emphasise ongoing engagement — Given the refinement of ideas between surveys, the Vision could highlight a commitment to continued community dialogue and responsiveness to evolving needs.

3 Data analysis methodology

3.1 Survey data analysis

PublicVoice used a step-by-step method called thematic analysis to review the open-ended responses from the Vision Paekākāriki community engagement survey. This method follows five main steps:

1. **Understanding the data:** Analysts read the data multiple times to grasp its content.
2. **Initial coding:** The data was sorted into labelled segments highlighting key points.
3. **Identifying themes:** These segments were then grouped into broader themes.
4. **Refining themes:** Themes were checked for relevance and clarity.
5. **Finalising themes:** Each theme was carefully defined, possibly with sub-themes.

3.2 Key findings analysis

To generate the key findings, PublicVoice combined the survey data with additional feedback points received from various engagement activities, including discussions at the Paekākāriki Market, engagement with Paekākāriki School students, and consultation with the Paekākāriki Housing Trust.

The analysis of the combined data was structured using the framework of the Council's Doughnut Economic Framework, which provides a holistic view of the community's well-being by considering social, cultural, environmental, and economic factors.

The key findings were organised into themes that align with the various dimensions of the Doughnut Framework. This approach allowed for a comprehensive understanding of the community's values, priorities, and concerns, extending beyond the specific questions asked in the survey.

3.3 Reporting

For the survey data, tables illustrating the frequency of the key themes have been included to demonstrate the significance of each theme. Only descriptions of the most frequent themes have been included in Section 2, "A summary of all feedback on Vision Paekākāriki " to highlight the main points expressed by respondents.

In contrast, Section 4 reports the key findings and presents the most common topics from the combined data, organised according to the doughnut model. This section provides a more detailed analysis, offering valuable insights and guidance for the Council's decision-making processes and future planning efforts.

By differentiating between the analysis and reporting approaches for the survey data and the key findings, the methodology section clarifies the distinct methods used to examine and present the community's feedback.

Phase One: Gathering initial views

4 Vision Paekākāriki survey

This section presents the key findings from the Vision Paekākāriki community engagement survey which received 117 responses. The survey asked ten questions:

- Why Paekākāriki? What's your connection to Paekākāriki?
- How does it make you feel when you come home to the village?
- How do you get to/around Paekākāriki? & is this different to how you would want to, in an ideal world?
- What do you love most about Paekākāriki?
- What do you see as being most distinctive about the village?
- How would you like Paekākāriki to look and feel?
- How do you want Paekākāriki to be known by those who don't have the privilege of living here?
- What kind of community spirit would we like to see and how would we like this to manifest?
- What would you love for children? For elderly?
- If you had a generous pot of money, what is it that would make all the difference?

The analysis of survey data has been structured using the framework of the Council's Doughnut Framework. The key findings are organised into themes that align with the various dimensions of the Doughnut Framework. A subset of these questions was used for other stakeholder engagements listed in the front of this report resulting in higher numbers of responses and frequencies for those questions.

The most common topics that emerged from the community feedback are highlighted for each theme. These insights shed light on the Paekākāriki community's values, priorities, and concerns, offering valuable guidance for the Council's decision-making processes and future planning efforts.

4.1 Why Paekākāriki? What's your connection to Paekākāriki?

Respondents were asked to describe their connection to Paekākāriki. Table 1 details the various connections provided by respondents.

Overview of responses

Connections with others — Respondents expressed strong love and pride for their connection to Paekākāriki. They mention community, creative atmosphere, and special features that make living in this village unique and enjoyable. Many respondents have been long-term residents, while others have chosen to move back or retire in Paekākāriki. Some respondents have ancestral ties to the village, and multiple generations have lived there.

Theme	Subtheme	Frequency
CONNECTIONS WITH OTHERS		71
	Resident of Paekākāriki	55
	Family ties to Paekākāriki	9
	Community feel and initiatives	7
BIODIVERSITY		7
	Proximity to nature	7
INCOME & WORK		1
	Work in Paekākāriki	1

Table 1: Why Paekākāriki? What's your connection to Paekākāriki?

Selected quotes

"A beautiful haven, a current resident and proud to call home."

Why Paekākāriki? What's your connection to Paekākāriki?

"It is a lovely little microcosm with a community feel, art and all kind of cool initiatives happening all the time."

Why Paekākāriki? What's your connection to Paekākāriki?

"I have lived in Paekākāriki for 15 years. I am invested in it emotionally, and culturally. It is diverse and caring. It's very special, with people who are actively committed to the idea that a good community is no accident."

Why Paekākāriki? What's your connection to Paekākāriki?

"It's a beautiful community that has so many unique and special features, we love living here."

Why Paekākāriki? What's your connection to Paekākāriki?

4.2 How does it make you feel when you come home to the village?

Respondents were asked to describe their feelings when returning home to Paekākāriki. Table 2 details the various feelings provided by respondents.

Overview of responses

Peace & safety — Respondents express a strong sense of safety and happiness in their community, describing it as a peaceful and supportive place. They feel welcomed with a relaxed and calm atmosphere.

Connections with others — Respondents express a sense of happiness and nostalgia when talking about their connections with others in the village of Paekākāriki. They describe feeling lucky and connected and appreciate the warmth and vibrancy of the community. Many emphasise that coming home to the village brings a sense of relief, belonging, and joy.

Theme	Subtheme	Frequency
PEACE & SAFETY		66
	Feelings of happiness and contentment	38
	Relaxed and peaceful	16
	Sense of safety	12
CONNECTIONS WITH OTHERS		35
	Identify the area as 'home'	18
	Appreciation for the vibrancy the village	9
	Lucky to live in the community	5
	Nostalgic and connected	3
NETWORKS & CONNECTIVITY		3
	Concerns regarding infrastructure	3

Table 2: How does it make you feel when you come home to the village?

Selected quotes

"Coming home to Paekākāriki is like slipping into a nice warm bath in an old claw-foot tub. It is not fancy or elegant, it is a bit worn around the edges, but it is warming of the heart and soul & nourishing of the mind and spirit."

How does it make you feel when you come home to the village?

"Home! I feel relaxed and centred. Strong sense of diversity. Arts and sports centric village."

How does it make you feel when you come home to the village?

4.3 How do you get to/around Paekākāriki? & is this different to how you would want to, in an ideal world?

Respondents were asked to articulate their modes of transport to and within Paekākāriki and to consider how these preferences might differ in an ideal world. Table 3 shows the current transport preferences of the respondents, as well as their ideal world transport choices.

Overview of responses

Current networks & connectivity — Respondents mention using a variety of transportation options including car, train, walking, and biking to get around Paekākāriki. Overall, there is a mix of preferences for different modes of transport.

Ideal networks & connectivity — Respondents desire improved infrastructure, such as bike lanes, e-bikes, or e-scooters. Others mentioned the need for more frequent train services and better connections with other transport options. Overall, respondents seemed open to using public transport but highlighted the need for improvements in the system.

Theme	Subtheme	Frequency
CURRENT NETWORKS & CONNECTIVITY		165
	Car	56
	Walk	45
	Cycle/e-bike	34
	Train	25
	Public transport	5
IDEAL NETWORKS & CONNECTIVITY		22
	Cycle/e-bike	7
	Public transport	6
	Improve train frequency	5
	No difference	4

Table 3: How do you get to/around Paekākāriki? & is this different to how you would want to, in an ideal world?

Selected quotes

"Trains to commute weekdays, take car to city most weekends. Cycle or drive in the village. I'd like more express trains in the evening- 8,9,10pm. I'd like peak time evening trains that allow bikes."

How do you get to/around Paekākāriki? & is this different to how you would want to, in an ideal world?

4.4 What do you love most about Paekākāriki?

Respondents were asked what they love most about Paekākāriki. Table 4 details the various answers provided by respondents.

Overview of responses

Connections with others — Respondents love the village's historical aspect, small size, and strong sense of community and friendly atmosphere. They appreciate the various community initiatives and events. Overall, the connections with others and the inclusive and welcoming environment are highlighted as important aspects of the village.

Biodiversity — The village's access to nature is praised, particularly the beach and parks. Respondents love the village's unique charm and connection to the sea.

Networks & connectivity — Respondents mention various aspects they love about Paekākāriki. Some important aspects highlighted include the village shops and cafés and the easy access to transportation.

Theme	Subtheme	Frequency
CONNECTIONS WITH OTHERS		98
	Community spirit and connectedness	31
	Village atmosphere and small size	25
	Personal connections and relationships	18
	Community initiatives and events	9
	Recreational activities	8
	Diversity and creativity	7
BIODIVERSITY		50
	Natural surroundings (beach, parks, hills)	50
NETWORKS & CONNECTIVITY		32
	Access to amenities (shops, cafés, library)	24
	Access to public transport	8
EDUCATION & TRAINING		5
	Schooling	5
PEACE & SAFETY		4
	Sense of safety and friendliness	4

Table 4: What do you love most about Paekākāriki?

Selected quotes

"The close community, the way we care for and look after each other and the creativity. The gigs at the hall. The community organisations. The arty events. Also, the location is awesome"

What do you love most about Paekākāriki?

4.5 What do you see as being most distinctive about the village?

Respondents were asked what they see as being most distinctive about the village in Paekākāriki. Table 5 displays the various opinions of the respondents.

Overview of responses

Connections with others — Respondents highlight the sense of community, inclusivity, and friendliness in Paekākāriki. They mention the village atmosphere, the artistic and creative vibe, along with the historic buildings and the pride people have in belonging to the community.

Biodiversity — Respondents mention that the beach and coastal environment are the best aspects of Paekākāriki. They also appreciate the views and the town's commitment to the environment.

Networks & connectivity — Respondents mention the railway, Saint Peter's Hall, village buildings, and connection with the Paekākāriki Hill Road as important aspects of networks and connections in the area. They also highlight the relationship of Main Street to the hills, trains, and the ocean. Furthermore, they mention the popularity of the vibrant community and cafés with visitors on bikes and those walking the track.

Theme	Subtheme	Frequency
CONNECTIONS WITH OTHERS		62
	Village atmosphere and small size	20
	Diversity and creativity	14
	Community spirit and connectedness	12
	Historical and cultural significance	8
	Personal connections and relationships	5
	Unique character and charm	3
BIODIVERSITY		26
	Natural surroundings (beach, parks, hills)	26
NETWORKS & CONNECTIVITY		19
	Access to amenities (shops, cafés, library, halls)	14
	Access to public transport e.g. trains	5
PEACE & SAFETY		2
	Sense of safety and friendliness	2
HOUSING		1
	Good value homes	1

Table 5: What do you see as being most distinctive about the village?

Selected quotes

"There's an undeniable Paekākāriki character, off beat, DIY, community spirited, neighbourly."

What do you see as being most distinctive about the village?

4.6 How would you like Paekākāriki to look and feel?

Respondents were asked how they would like Paekākāriki to look and feel. Table 6 shows the various opinions and desires expressed by respondents under multiple categories.

Overview of responses

Connections with others — Respondents want Paekākāriki to have more people living there to support local businesses and schools and add vibrancy to the area. They also suggest more activities and attractions, such as a mini-Te Papa or a Brewtown, to entertain young people and visitors.

Income & work — Respondents express a desire to rejuvenate Paekākāriki through revamping derelict shops. Additionally, respondents emphasise the need for more vibrant and colourful shops, as well as employment opportunities for all demographics.

Networks & connectivity — Respondents have varying opinions about networks and connections in Paekākāriki. Some suggest improvements like designated car park areas, revamping derelict shops, and creating safer walking access. Others emphasise the need for better access to the beach and infrastructure investment.

Prefer status-quo — Respondents express positive sentiments towards the current state of the village and emphasise the importance of maintaining its small-town charm and seaside village feel.

Land use & quality/housing — Respondents emphasise the importance of investing in infrastructure, including surveying land-locked properties and connecting to mains sewage, for long-term sustainability and future development. Additionally, respondents value the village as a prototype for sustainable living. Respondents expressed a desire for more affordable housing options, especially for families and lower-income individuals, to retain diversity in the village and prevent it from becoming a retirement village.

Theme	Subtheme	Frequency
CONNECTIONS WITH OTHERS		94
	Improve recreational facilities	36
	Friendly/vibrant community	17
	Community creativity	11
	Community events	11
	Indoor activity centre	11
	Improve activities for teenagers	5
	Visual representation and respect for mana whenua	3
INCOME & WORK		56
	Business and Retail Development	43
	Improve visitor services	13
NETWORKS & CONNECTIVITY		47
	Improve infrastructure	13
	Improve pedestrian access	11
	E-bikes/e-scooters	10
	Improve road safety	5
	Reduce speed limits	4
	Retain car parking in CBD	4
OTHER		23
	Prefer status quo	23
LAND USE & QUALITY		18
	Sustainable development	18
HOUSING		15
	More affordable housing	15
EDUCATION & TRAINING		2
	Improve education	2

Table 6: How would you like Paekākāriki to look and feel?

Selected quotes

"Same focus on creativity and nature. A bit more noise and tolerance for young adults. A bit more party, a little less yoga retreat!"

How would you like Paekākāriki to look and feel?

"Would love to see more visual representation of Ngāti Haumia. More affordable for families. Less empty homes."

How would you like Paekākāriki to look and feel?

"I'd like it to pretty much stay as it is, a few more sustainable shops would be good, let's get rid of the vacant buildings by finding some tenants."

How would you like Paekākāriki to look and feel?

"Lively art and food hub for all so we draw in other Kapiti people to visit the beach, but not lose our railway history."

How would you like Paekākāriki to look and feel?

4.7 How do you want Paekākāriki to be known by those who don't have the privilege of living here?

Respondents were asked how they want Paekākāriki to be known by those who don't live there. Table 7 shows the various answers provided by respondents.

Overview of responses

Connections with others — Respondents would like Paekākāriki to be known as a friendly, welcoming, and safe village, known for its artistic and creative community. It is seen as a place that fosters connections and acceptance among its diverse residents. The village would like to be described as a destination with a vibrant atmosphere and strong community spirit.

Peace & safety — Respondents would like the village to be described as a safe, friendly place for relaxation.

Biodiversity — The respondents say that Paekākāriki should be known for its commitment to sustainability, innovation, and protecting the environment. They also highlight its natural beauty and would like Paekākāriki to be known for its great beach and parks.

Theme	Subtheme	Frequency
CONNECTIONS WITH OTHERS		81
	Visitor friendly	20
	Community spirit and connectedness	17
	Diverse and creative community	13
	Village atmosphere and small size	13
	Family friendly	5
	Personal connections and relationships	4
	Community initiatives and events	3
	Historical and cultural significance	3
	Unique character and charm	3
PEACE & SAFETY		28
	Sense of safety and friendliness	16
	Relaxing	12
BIODIVERSITY		22
	Natural surroundings (beach, parks, hills)	16

Vision Paekākāriki — Summary Report

	Environmentally friendly	6
NETWORKS & CONNECTIVITY		6
	Access to amenities (shops, cafés, library)	6

Table 7: How do you want Paekākāriki to be known by those who don't have the privilege of living here?

4.8 What kind of community spirit would we like to see and how would we like this to manifest?

Respondents were asked what kind of community spirit they would like to see and how they would like this to manifest. Table 8 shows the variety of responses.

Overview of responses

Connections with others — Respondents mentioned that they would like a community spirit that is friendly, inclusive, connected, supportive, and creative. Some respondents mentioned they would like inclusivity to be a part of the community spirit, as evidenced by activities for the elderly and respect for diversity. The community would like a spirit of open-mindedness, kindness, and caring.

Peace & safety — Respondents highlight the importance of friendliness, kindness, and respect to create a peaceful and safe environment. They also mention the need to monitor aggressive comments on social media.

Housing — Respondents highlight the need for more affordable housing options, such as council flats, to accommodate lower-income individuals. They also raise concerns about rising housing costs forcing out long-term residents, the elderly, and young residents.

Theme	Subtheme	Frequency
CONNECTIONS WITH OTHERS		41
	Welcoming and open to all	14
	Mutual aid and looking out for each other	11
	Tolerance/acceptance of different views/values	10
	Focus on caring for elderly/less abled	3
	Honouring/celebrating indigenous culture/history	3
PEACE & SAFETY		13
	Ensuring safe/friendly environment	10
	Addressing issues of violence/safety concerns	3
HOUSING		10
	Support for those in financial/housing need	6
	Improving housing availability/affordability	4

Theme	Subtheme	Frequency
COMMUNITY PARTNERSHIP		8
	Support for community events (e.g., markets, music)	8
NETWORKS & CONNECTIVITY		6
	Enhancing local amenities/facilities	6
BIODIVERSITY		4
	Ecological mindfulness/green initiatives	4
HEALTH		3
	Promoting healthy living/wellbeing	3

Table 8: What kind of community spirit would we like to see and how would we like this to manifest?

4.9 What would you love for children? For elderly?

Respondents were asked what they would love for children and older people. Table 9 shows the various answers. Some responses were general in nature and not specific to children or the elderly. These have also been included here.

Overview of responses

Networks & connectivity — Respondents desire improved road safety and free/subsidised transport to access services in the Kāpiti area. They also highlight the need for great public transport. Other suggestions include better public spaces to provide opportunities for community engagement.

Older persons — Respondents mentioned the need for more social groups and development for the elderly, including affordable housing and better access to the beach. They also highlighted the importance of valuing the elderly in the community and the need for accessible infrastructure and support services for elderly community members.

Children — Respondents mentioned the need for more social groups, entertainment options for young people, and a central place for indoor activities on wet weather days. They also expressed a desire for more development in Queen Elizabeth Park for children and better access to the beach for all ages. There were also suggestions for specific amenities like a pier for fishing and a new playground in Queen Elizabeth Park.

Theme	Subtheme	Frequency
NETWORKS & CONNECTIVITY		40
	Road safety/safety	20
	Improved/more facilities, amenities, and retail	6
	Accessible footpaths	5
	Improve public transport	5
	Bike lanes around village	4
OLDER PERSONS		36
	Community support and inclusion	15
	Affordable housing	12
	Better access to the beach	6
	Social groups	3
CHILDREN		28
	Playground	17
	Better access to the beach	6
	More activities for teens	5
CONNECTIONS WITH OTHERS		5
	Outdoor/indoor entertainment	5

Table 9: What would you love for children? For elderly?

4.10 If you had a generous pot of money, what is it that would make all the difference?

Respondents were asked how they had a generous pot of money and what they would do with it. Table 10 shows the various opinions and desires expressed by respondents.

Overview of responses

Income & work — The respondents mention various ideas and improvements for the income and work topic in Paekākāriki. These include adding more diverse retail and hospitality options and financially assisting the surf club and coastal café. Additionally, respondents would like to see more quality shops and pop-up spaces for local products. Sprucing up buildings and adding a supermarket were also mentioned.

Networks & connectivity — Respondents have various suggestions regarding networks and connections in Paekākāriki. Some important aspects mentioned include improving access to the beach, building a tram line, removing power lines, and creating cycleways. Furthermore, respondents would like to see the village connected to mains sewage, with investment made into local infrastructure.

Education & training — Respondents indicated the need for a larger school as well as a preference for other educational options such as a music school or cooking and craft classes. Additionally, some mentioned the need to bulk up resources at the community library.

Housing — Respondents emphasise the need for affordable, well-designed housing that connects people and includes gardens and mingling spaces. They also suggest gifting housing to the Housing Trust to make a significant difference. In addition, there is a focus on sustainable and eco-friendly housing options, such as installing solar panels and prioritising initiatives that help protect the environment.

Land use & quality — Respondents support a seawall and emphasise the importance of planting/landscaping along the beach. Additionally, concerns about rising sea levels and preserving natural resources, such as wetlands and native forests, are raised.

Biodiversity — Respondents desire improvements to Paekākāriki, such as creating a predator-free fence, preserving biodiversity by restoring wetlands and native forests, and cleaning up the beach and river.

Community partnership — Respondents expressed various ideas and suggestions for community partnership, with positive and neutral sentiments. Two important aspects are supporting community initiatives and organisations and increasing communication and information dissemination within the community.

Connections with others — Respondents desire a Marae and community space. They also suggest investing in community gardens and assisting the homeless and those in need.

Theme	Subtheme	Frequency
INCOME & WORK		51
	Retail/hospitality expansion (e.g., new shops/cafés)	23
	Support for local businesses & social enterprises	17
	Enhance existing businesses (e.g., rebuild, beautify)	8
	Tourism and visitor attractions (e.g., pier)	3
NETWORKS & CONNECTIVITY		48
	Infrastructure upgrades (e.g., sewage)	20

Theme	Subtheme	Frequency
	Traffic and road improvements	15
	Renewable energy initiatives (e.g., solar)	8
	Public transport enhancement (e.g., tram line built)	5
EDUCATION & TRAINING		23
	Education facilities	23
HOUSING		20
	Affordable and eco-friendly housing	20
LAND USE & QUALITY		15
	Adaptation to sea level rise i.e., sea wall	12
	Surveying of land properties & boundaries	3
BIODIVERSITY		13
	Urban beautification (e.g., landscaping, planting)	7
	Environmental clean-up	6
COMMUNITY PARTNERSHIP		12
	Support for local groups (e.g., arts, surf club)	12
CONNECTIONS WITH OTHERS		10
	Cultural initiatives (e.g., Marae, community spaces)	5
	Recreational facilities for teens	4
	Support for vulnerable populations	1
PEACE & SAFETY		9
	Safety improvements (e.g., cycle paths)	9
HEALTH		9
	Community health and fitness facilities	5
	Access to healthcare (e.g., local doctor's surgery)	4

Table 10: If you had a generous pot of money, what is it that would make all the difference?

Selected quotes

"Pop up spaces where you can buy local made things from Kāpiti and Paekākāriki, another dining option would be nice to and something we would wholly support."

If you had a generous pot of money, what is it that would make all the difference?

Phase Two: Testing what we have heard so far

5 Vision follow up survey

This section of the report summarises community feedback received as part of Council's Vision follow up survey. The community was provided with a summary of the feedback received from the initial engagement for reflection and refining.

5.1 Does this reflect what's important to you?

Respondents were asked whether the feedback received reflected what was important to them. Table 11 is a summary of the feedback received.

Overview of responses

Connections with others — Respondents mention the importance of providing access points to the beach. They also highlight the significance of historic buildings, tourism, and preserving the village's identity. Additionally, respondents mention the need for upgraded public toilets, improved parking, and increased library hours. Overall, respondents want to maintain the unique character of Paekākāriki while addressing various infrastructure and community needs.

Networks & connectivity — Respondents express the need for the promised sea wall and walkway to be prioritised and carried out. They also emphasise the importance of an accessible walkway for residents and tourism. Some respondents also mention other aspects such as intersection lights, creating pedestrian crossings and reducing speed limits for safer roads.

River/ocean health — Respondents express concern about coastal erosion and prioritise the rebuilding of the sea wall. They also voiced concern about the issue of waste management and its impact on river/ocean health, specifically mentioning the possibility of residences with septic tanks.

Theme	Subtheme	Frequency
CONNECTIONS WITH OTHERS		38
	Development of culture/history of the area	9
	Improve access to/upgrade public facilities	7
	Development of youth-focused activities/facilities	5
	Support for library in Paekākāriki	5
	Image of Paekākāriki as gateway to Kāpiti	3
	Improve access to natural/public spaces	3
	Support for community events and activities	3
	Support for community sports/outdoor activities	3

Theme	Subtheme	Frequency
NETWORKS & CONNECTIVITY		14
	Improve/expand cycling and walking paths	7
	Traffic management and road safety	7
RIVER/OCEAN HEALTH		8
	Concern about coastal erosion	4
	Improvements to waste management	4
HOUSING		6
	Support for affordable/more housing	6
BIODIVERSITY		4
	Removal of non-native species/pests	4
PEACE & SAFETY		4
	Improving intra-community relationships	2
	Concern about potential increased crime	1
	Maintaining safe community spaces	1
INCOME & WORK		3
	Support for tourism industry	3
COMMUNITY PARTNERSHIP		3
	Community involvement in decision-making	3
LAND USE & QUALITY		3
	Address land restitution claim of Miriona Budge	2
	Concern about relocations	1
OTHER		2
	Concern about rates increases	2
FOOD		2
	Support for food fairs/festivals	2
CLIMATE & CHANGE		1
	Focus on climate change mitigation	1
HEALTH		1
	Improved access to healthcare facilities	1
WATER		1
	Concern about water quality and supply	1
EQUALITY		1
	Desire for improved diversity	1
RECREATIONAL ACTIVITIES		1
	Open up areas for camping	1
ENERGY		1
	Support for renewable energy	1

Table 11: Does this reflect what's important to you?

Selected quotes

“Aspects are important. I am worried about gentrification of Paekākāriki. Housing has become unaffordable for families. I also believe cars have a role to play in Paekākāriki and that we are focusing too much on cycling. I agree with crossings been put across Wellington Road to Campbell Park. It would be good to see the skate ramp improved. Access to the beach is import [sic] (steps down). In terms of sea wall, I believe the rock ramps are the best and we can add height as we need.”

Does this reflect what’s important to you?

5.2 Is there anything missing?

Respondents were asked whether there is anything missing. Table 12 provides an overview of what respondents feel is missing.

Overview of responses

Connections with others — Respondents mention the importance of connections with others through various activities and options available in the village, such as sports clubs, music, martial arts, and community cooking. They also express the need for a community centre and tourist facilities and suggest utilising existing housing stock and improving community resilience. Some respondents call for better noise control for live music events. Additionally, there are requests for a fenced dog park, a pump track/bike park, a pool, and more recreational facilities like basketball courts and a trampoline park.

Community partnership — Respondents highlighted the importance of better access to community services and the need for a community centre. They also expressed the need to prioritise the Wainuiwhenua project and address the high Council debt. Additionally, respondents mentioned the need for community resilience in the face of natural disasters and the desire for reduced Council spending.

Housing — Respondents express the need for more affordable housing in the area and criticise the current planning practices of the Council. Other suggestions include more water fountains, visitor facilities, solar panels, and colourful buildings. Lastly, respondents mention the importance of understanding poor housing conditions and desire for upgrades and redevelopment of existing housing.

Theme	Subtheme	Frequency
CONNECTIONS WITH OTHERS		47
	Outdoor sports and recreational facilities	12
	Fenced in dog parks needed	10

Theme	Subtheme	Frequency
	Indoor sports and recreational facilities	10
	Increase the number of marae	6
	Increase the number of lifeguards	5
	Cultural and arts facilities and events	4
COMMUNITY PARTNERSHIP		16
	Concern about council spending and rates increases	10
	Focus on core council services	3
	Include the Wainuiwhenua Project in the vision	3
HOUSING		16
	Build more retirement homes	8
	Maintain affordable rates	8
NETWORKS & CONNECTIVITY		13
	Improve road safety and use with increased cars	7
	Enhanced public transport services	3
	Invest in E-Scooter service	3
RIVER/OCEAN HEALTH		10
	Maintain stormwater and wastewater systems	6
	Improve septic tank system	4
BIODIVERSITY		9
	Focus on environmental conservation	6
	Pest control and management	3
WATER		7
	Improved water management and quality	4
	Increase the number of water fountains	3
CLIMATE & CHANGE		6
	Focus on climate change mitigation and adaptation	3
	Sustainable energy initiatives	3
FOOD		6
	Encourage investment in local shopping and dining	6
HEALTH		4
	Improved healthcare facilities and services	4
EDUCATION & TRAINING		4
	New kindergarten/early childhood centre	4
INCOME & WORK		3
	Address vacant properties/improve town appeal	1
	Support for local businesses and economy	1
	Tourism development initiatives	1

Theme	Subtheme	Frequency
LAND USE & QUALITY		3
	Address land restitution claim of Miriona Budge	3
PEACE & SAFETY		1
	Address crime in the community	1

Table 12: Is there anything missing?

Selected quotes

"As I have mentioned before have a community centre here would be great with also tourist facilities such as paddle board hire kayaks e-bike tours. The old Post office would be ideal if funding can be found."

Is there anything missing?

"I think we could really use a place for dogs. because of the amount of times, I'm walking or running in the park and get jumped on by a dog!"

Is there anything missing?

"Maintaining & improving safe cycle connections through the village. One can go from Porirua to Otaki off road except for Paekākāriki. The sea wall will eventually have a cycle way along it but something like a village wide speed reduction to 40km would help. Also, stronger links with Whareroa Farm Reserve."

Is there anything missing?

Broader community engagement

In addition to the targeted Vision Paekākāriki surveys and workshops, several other community engagement initiatives have provided valuable insights into the priorities, concerns, and aspirations of Paekākāriki residents. These broader engagement efforts have captured a wide range of perspectives on various aspects of community life, from long-term planning to specific local projects.

The following sections summarise key findings from:

1. The Long Term Plan 2024-2034 consultation process
2. The "Paekākāriki: What Next?" participatory project
3. The Takutai Kāpiti Coastal Adaptation initiative

These additional sources of community feedback complement and enrich the Vision Paekākāriki engagement, offering a more comprehensive understanding of the community's vision for its future. By considering these diverse inputs, we can ensure that the Vision Paekākāriki reflects a broad spectrum of community voices and addresses both immediate concerns and long-term aspirations.

6 Relevant Insights from the Long-Term Plan Process

The Long Term Plan (LTP) 2024-34 consultation process gathered valuable community feedback on the future development of Paekākāriki. This engagement captured a wide range of perspectives on issues affecting the village's growth, infrastructure needs, and community wellbeing.

Feedback covered topics such as the prioritisation of the seawall project, housing affordability, historical and cultural preservation, climate action, and community engagement in decision-making processes. These insights highlight the community's distinct priorities and concerns, providing important guidance for shaping the future.

The following subsections summarize the key themes that emerged from the LTP consultation, offering an overview of residents' views on development over the next decade. These findings complement and reinforce the insights gathered through the Vision Paekākāriki engagement, contributing to a more comprehensive understanding of the community's vision for the future.

6.1 Infrastructure & Safety

Seawall — The seawall project is identified as a key priority for the community.

Beach Road — The Beach Road development needs attention and is highlighted as an important project.

Speed limits — Implementing and maintaining a 30 km/h speed limit in certain areas is seen as crucial for enhancing safety.

General infrastructure — There are calls for improved infrastructure, particularly for water management and flood protection.

6.2 Housing & Social Services:

Council housing — Strong support exists for the Paekākāriki Housing Trust managing Council's social housing units in the village, with potential for expansion.

Older persons' housing — There's a higher preference for partnering with an existing Community Housing Provider for older persons' housing, compared to the district-wide average.

Affordability concerns — Issues were raised about the impact of rate increases on low-income renters and the need for safeguards when transferring Council housing.

6.3 Historical & Cultural Preservation

Budge House — Relocating and preserving the historic Budge House is identified as a key project, reflecting the community's commitment to maintaining cultural heritage alongside new developments.

6.4 Climate Action & Environmental Concerns

Climate action rate — There's strong support for introducing a new climate action rate based on capital value, significantly higher than the district-wide average.

Environmental protection — Emphasis is placed on environmental protection and climate change adaptation measures.

6.5 Financial Management & Rates

Rate increases — Concerns exist about the affordability of rate increases, particularly for low-income residents.

Debt reduction — There's support for reducing Council debt, but not at the expense of social and environmental wellbeing.

6.6 Community Engagement & Governance

Community Board role — The Paekākāriki Community Board endorsed several Council proposals while emphasising the need to balance financial considerations with community wellbeing.

Public consultation — There's an expressed need for more robust community consultation and engagement processes to ensure transparency and inclusivity in decision-making.

6.7 Community Services

Facilities enhancement — There's an emphasis on enhancing community facilities and services.

These insights from the LTP process highlight Paekākāriki priorities, particularly around climate action, community housing, infrastructure improvements, and preserving local character and heritage. Future planning will need to balance these local priorities with district-wide concerns about affordability and core infrastructure needs, while also addressing the unique coastal challenges faced by the community and ensuring effective community engagement in decision-making processes.

7 Paekākāriki: What next? Planning for vibrant, equitable and sustainable village life after the opening of Te Ara Nui Te Rangihaeata.

This section of the report provides an overview of the 2022 participatory project 'Paekākāriki: What Next?'. The aim of the project was to understand local perspectives on the impact of the new road opening and future aspirations for Paekākāriki. The participatory project included 26 interviews, 2 focus groups with school children, 2 public workshops, and meetings with Ngāti Haumia iwi representative Karl Farrell.

Key changes identified since Te Ara Nui Te Rangihaeata opened include:

- Quieter, more peaceful weekends without accident sirens
- Beach Road feels less like a passing place, has potential as a social hub
- Need to restore mana and mauri Māori, tell the place's story
- Easier, quieter access from SH59 but still some safety issues
- Less drop-in shoppers impacting local businesses
- Beach Road cafés crowded on weekends, locals avoiding the area
- Popular weekday destination for older visitors
- Opportunity to attract more families for weekend excursions
- Need to make village more welcoming for local children and youth.

Five key shifts defined:

- From diminishing social action to empowering autonomous youth action
- From retail strip to welcoming place of Ngāti Haumia
- From each having land to all whakamana i te whenua (empowering the land)
- From lollies on a seat to barefoot independence to play
- From Pakeha leadership to Pakeha supporting sustainable Iwi.

Strategies & projects proposed:

- Identify and enable community use of public spaces
- Develop child and youth vision through school projects and youth-led process
- Support Ngāti Haumia leadership sustainably with design guides, naming, tikanga

Vision Paekākāriki — Summary Report

- Enhance Beach Road as a welcoming social hub for diverse groups, especially children and youth, through traffic calming, amenities, native planting, playable elements
- Consider 30 km/h speed zone village-wide for traffic safety.

In summary, the report provides a community-informed vision and strategies for evolving Paekākāriki, especially the Beach Road area, to become a more vibrant, equitable, sustainable and welcoming place for all after the opening of the new road. It emphasises restoring Māori identity, empowering youth, and enhancing social and physical amenities to serve the whole community.

8 Takutai Kāpiti

Takutai Kāpiti is Council's initiative to adapt to coastal changes. It focuses on how the community and Council can respond to sea level rise and its effects on the environment and infrastructure. This section summarises community feedback on coastal adaptation strategies for Kāpiti.

Data was collected through two methods:

- In-person Community Workshop: Held on 07 November 2023 at St Peters Village Hall, with 99 participants.
- Online "Have Your Say" (HYS) survey: Completed by 13 respondents.

The combined efforts yielded over 440 responses to the survey questions.

8.1 What do you value most about living in this area?

Respondents were asked what they value most about living in Kāpiti. **Error! Reference source not found.** details what respondents most love about living in the area.

Overview of responses

Recreation & leisure — Respondents express positive sentiments about living in a coastal area with access to the ocean and natural environments such as beaches, hills, and wildlife. They appreciate the community spirit and recreational activities available, including biking, fishing, dog walking, and participating in local events. Living in this location provides a sense of home, stability, and a strong connection to nature.

Connections with others — Respondents mention that the community in Paekākāriki has a strong sense of inclusivity, sharing, and pride of place. They appreciate the connection to mana whenua and the acceptance of everyone in the community. The arts scene, historic heritage, and the ability to raise a family in a great environment are also highlighted. Additionally, they emphasise the sense of community and active involvement in activities and services, describing Paekākāriki as a distinctive, vibrant, and caring village.

Networks & connectivity — Residents mention the accessibility to various locations such as the beach, mountains, and city through rail connections, as well as the convenience of public transport. Some appreciate the absence of CCTV cameras and cell phone towers and highlight the presence of good infrastructure and transportation links to Wellington.

Theme	Subtheme	Frequency
RECREATION & LEISURE		68
	Proximity to nature	19
	Proximity to the ocean/sea	18
	Proximity/access to seaside and beaches	9

Theme	Subtheme	Frequency
	Recreational activities	7
	Proximity to mountains/hills	5
	Cycling access	4
	Hiking/walking access	3
	Proximity to QE Park	3
CONNECTIONS WITH OTHERS		58
	Community feel and initiatives	35
	Historical and cultural significance	10
	Māori community/identity	6
	Arts/culture	4
	Progressiveness	3
NETWORKS & CONNECTIVITY		17
	Accessible and reliable public transport	7
	Proximity to Wellington	5
	Proximity/access to amenities/services	5
LIFESTYLE		14
	Fond of small-town character	5
	Appreciate slower lifestyle	3
	Appreciate the village feel	3
	Uniqueness	3
CLIMATE & CHANGE		8
	Enjoy the local climate and weather	2
	Importance of coast for protection and benefits	2
	Stormwater/wastewater systems	2
	Enjoy the views	1
	Protection of local flora/fauna	1
EQUALITY		8
	Inclusive of diversity	8
PEACE & SAFETY		3
	Safe and secure	3
INCOME & WORK		3
	Enjoy visiting local shops	3
COMMUNITY PARTNERSHIP		3
	Concern regarding the consultation	3
EDUCATION & TRAINING		2
	Access to schools	2
HOUSING		2
	Availability of housing	1
	Social housing	1
LAND USE & QUALITY		2
	Low density/lack of urban sprawl	2
HEALTH		1
	Mental health/personal wellbeing	1

Table 13: What do you value most about living in this area?

"Living on the coast and having easy direct and daily access to the beach for health and wellbeing, without needing to drive. Close knit community. The beach is a place for local residents to connect informally as they walk dogs or swim and exercise etc and it's also a gathering place for groups such as the daily sea swimmers - all year round. Endangered wildlife such as little Blue Penguins also make their home on this coast and we are privileged to have them."

What do you value most about living in this area?

8.2 How important is our coastline to you?

Respondents were asked how important the coastline is to them. Table 14 details how important the coastline is to respondents.

Overview of responses

Connections with others — The respondents emphasise the proximity and access to the beach as an important aspect of their connection with others. They mention the beach's significance in terms of livelihood, recreation, and gathering, highlighting its impact on their sense of community and well-being. Living near the sea is also seen as a key factor in their choice of residence. The coastline acts as a parenting tool and a resource for children to play, explore, and relieve stress. It is also highlighted that small changes to the coastline can have a significant impact on their livelihoods and the community, emphasising the intrinsic connection to the coastline.

Land use & quality — Respondents express a strong sentiment towards the importance of land use and the quality of the coastline. They believe that the coastline is fundamental to the village's identity and is worth protecting and fighting for. The coastline defines the village and is a rich resource that plays a crucial role in the community's livelihood and sense of community.

Health — Respondents emphasise the importance of the coastline and the sea for their wellbeing, mental health, and overall sense of community. They describe the coastline as a source of rejuvenation, a therapeutic space, and a place for various activities such as swimming, walking, and fishing.

Theme	Subtheme	Frequency
CONNECTIONS WITH OTHERS	Importance of regular beach visits	10
	Benefits of social interactions and connections	5
	Consider the coastline home	4
	Emotional connection to coastline	3
HEALTH		15

Vision Paekākāriki — Summary Report

	Improvements in mental health and wellbeing	15
LAND USE & QUALITY		14
	The coastline is very important	8
	Coastline defines Kāpiti geography	6
RECREATION & LEISURE		11
	Enjoyment of water sports activities	11
BIODIVERSITY		10
	Appreciation for coastal habitat	5
	Importance of wildlife observation/birdwatching	5
COMMUNITY PARTNERSHIP		9
	Concern regarding the consultation	9
PEACE & SAFETY		8
	Recognition of natural beauty and views	8
NETWORKS & CONNECTIVITY		3
	Identification with coastal community character	3
RIVER/OCEAN HEALTH		2
	Appreciation for clean, unpolluted beaches	1
	Concern about marine ecosystem health	1

Table 14: How important is our coastline to you?

"Extremely important. The coastline is a source of kaimoana for our community, it is a gathering place, a place to walk, swim, relax, learn and connect with other people. Our community is shaped by the coastline and the way we live is intrinsically connected to the coastline. We are a small coastal community with strong connection to the coastline. Small changes to the coastline a felt strongly and can have a big impact on our houses, our livelihoods and our sense of community."

How important is our coastline to you?

"Very important. Being connected to the coastline is important for my mental health and my children's upbringing."

How important is our coastline to you?

8.3 How concerned are you about coastal hazards like erosion and flooding, and why?

Respondents were asked how concerned they are about coastal hazards like erosion and flooding and why they were concerned about these hazards. Table 15 provides an overview of the level of concern of respondents and the reasons for their concern.

Overview of responses:

Land use & quality — Respondents express varying levels of concern about land use and quality. Some are not concerned at all, citing historical evidence and lack of visible impact. Others are highly concerned, recognising the threat of erosion, coastal flooding, and the need for protection measures and sustainable planning of land use. Some express optimism about finding solutions, while others question the cost burden on ratepayers and the fairness of who pays for protection.

Housing — Respondents express concerns about the loss of property and infrastructure, as well as the impact on property values and the burden on rate payers due to issues such as insurance and banking. They are worried about the risk of erosion and coastal flooding, which makes houses vulnerable and threatens important infrastructure. However, some respondents believe that there are design solutions to mitigate the risk and are confident in their ability to adapt.

River/ocean health — Respondents express concerns about the loss of infrastructure, such as the water table and flooding effects on Beach Rd and the lack of maintenance on existing sea walls. They emphasise the importance of improving and renewing sea walls to protect against erosion and flooding, especially for beachfront properties. Some respondents are not concerned due to investments in private seawalls and elevated sections, but others criticise the use of extreme modelling and the lack of engagement from the Council.

Theme	Subtheme	Frequency
LAND USE & QUALITY		36
	Concerned about erosion and flooding	15
	Not concerned about erosion and flooding	12
	Concern about cost generally	9
HOUSING		14
	Concern about property value and insurance	8
	Concern about property loss or damage	6
RIVER/OCEAN HEALTH		14
	Concern about lack of seawall maintenance/builds	9
	Appreciation for sea wall protection	5
COMMUNITY PARTNERSHIP		12

Theme	Subtheme	Frequency
	Concern about inadequate council planning/action	12
NETWORKS & CONNECTIVITY		8
	Concern about loss of infrastructure	8
HEALTH		8
	Concern about community wellbeing	5
	Concern about impact on mental health	3
CLIMATE & CHANGE		7
	Concern about the uncertainty of climate change	4
	Concern about extreme weather events	3
BIODIVERSITY		6
	Concern about impact on Queen Elizabeth Park	2
	Concern about wildlife habitat protection	2
	Appreciation for dune protection	1
	Concern about lack of dune maintenance/planting	1
CONNECTIONS WITH OTHERS		5
	Concern about impact on recreation	2
	Appreciation of coastline community identity	1
	Concern about beach access	1
	Concern regarding the impact on future generations	1
WATER		3
	Concern about loss of water infrastructure	2
	Concern about sewage system vulnerability	1
INCOME & WORK		1
	Concern about impact on livelihood	1
ENERGY		1
	Concern about the impact on power supply	1

Table 15: How concerned are you about coastal hazards like erosion and flooding, and why?

Selected quotes

"Quite concerned - we see the effects of storms and erosion at QE park. If we didn't have the sea wall what would have happened?"

How concerned are you about coastal hazards like erosion and flooding and why?

“No, I am confident there are design solutions to mitigate the risk. I am concerned however by the risk of insurance increases based on macro information which uses unreasonable assumptions- i.e. that seawalls will fail within 10 years and not be replaced.”

How concerned are you about coastal hazards like erosion and flooding and why?

8.4 How do you think our coastline should be protected?

Respondents were asked how they thought the coastline should be protected. Table 16 provides an overview of suggestions made by respondents.

Overview of responses

River/ocean health — Respondents emphasise the importance of seawalls in protecting coastal areas from erosion and maintaining the health of rivers and oceans. They discuss the need for well-engineered seawalls, the ongoing maintenance of existing walls, and the use of new technological solutions. There is an emphasis on the need to balance protecting private property and assets with the potential impacts of climate change.

Community partnership — Respondents expressed a desire for immediate action in building and maintaining seawalls for community resilience, with a focus on long-term solutions and best practices. They also criticised the Council's priorities, calling for a focus on protecting homes and providing essential services instead of pursuing unrelated initiatives.

Biodiversity — Respondents emphasise the importance of protecting natural ecosystems, such as dunes and coastal areas, to preserve biodiversity. They suggest investing in dune restoration, planting and limiting activities that could harm the environment. They also advocate for implementing measures to reduce the impacts of climate change. This includes restrictions on housing and commercial developments near natural environments.

Theme	Subtheme	Frequency
RIVER/OCEAN HEALTH		37
	Support for improved/additional seawalls	26
	Support for R&D of new technology	5
	Support for improved stormwater management	3
	Support for traditional/natural coastal defences	3
COMMUNITY PARTNERSHIP		18
	Support for medium/long-term plan	5

Theme	Subtheme	Frequency
	Support for inclusion of local/expert knowledge	4
	Criticism of consultation process	3
	Support for immediate solution	3
	Support for learning from other examples	3
BIODIVERSITY		16
	Support for dune restoration and management	6
	Support for increased planting	6
	Support for improved protection of wildlife	4
NETWORKS & CONNECTIVITY		11
	Support for addressing The Parade access	5
	Support for addressing Ames St access	3
	Support for improved roads	3
LAND USE & QUALITY		10
	Support for protection of public infrastructure	6
	Support for managed retreat	4
EQUALITY		7
	Concern about distribution of protection costs	4
	Equitable approach to protection	3
HOUSING		6
	Support for protecting existing coastal properties	6
CLIMATE & CHANGE		2
	Concern about environmental health impacts	1
	Prefer a focus on mitigation	1
EDUCATION & TRAINING		1
	Support for public information on coastal issues	1

Table 16 How do you think our coastline should be protected?

Selected quotes

“Natural dune systems and coastal areas. More funding for dune restoration.”

How do you think our coastline should be protected?

"The protection and maintenance of the Paekākāriki sea wall should be enshrined in policy"

How do you think our coastline should be protected?

"Very long term...may need relocation but maintain sea-wall as 1st priority"

How do you think our coastline should be protected?

"The dunes, foreshore, beach, tidal zones and waterways connecting the whenua with moana all need protecting. Restrictions to housing, commercial developments and activities which may impact the natural environment, on or near any of these areas need to be in place so that we can preserve the natural geographical features which support the local eco systems."

How do you think our coastline should be protected?

"Public and Private property and assets must be protected for future generations. Seawalls have proven effective and must be part of any sensible adaptation plan. People have spent their lives and generations in these communities and must be able to remain in their own homes. They must not become refugees in their own country due to ideological managed retreat scenario which is totally unnecessary."

How do you think our coastline should be protected?

Produced by PublicVoice Limited

Suite 2, 5 Bouverie Street

Petone

Lower Hutt, 5012

Ph: (04) 909 7463

Email: info@publicvoice.co.nz

The views expressed in this report are those of the author(s) and do not necessarily reflect the position of the Kāpiti Coast District Council. The Kāpiti Coast District Council does not accept any liability for claims arising from the reports content or reliance on it.