

Vision Paraparaumu

Summary Report

November, 2024

About PublicVoice

PublicVoice Limited is a leading research and engagement consultancy headquartered in Wellington, New Zealand. We concentrate on public policy research and consultation, providing services to various local and central government agencies throughout New Zealand. To learn more about our work, please visit www.publicvoice.co.nz.

Version:	V1.0
Date:	5 November 2024
Author(s):	Jared Bothwell

Contents

Contents	1
1 Executive summary	2
1.1 Why Vision Kāpiti 2060?	2
1.2 Overview of Vision Paraparaumu engagement and feedback	2
1.3 Central Themes.....	6
2 A summary of all feedback on Vision Paraparaumu.....	8
2.1 Place.....	9
2.2 People	18
2.3 Partnership.....	31
2.4 Comparison of Vision Paraparaumu and Vision follow up survey results....	33
3 Data analysis methodology.....	35
3.1 Survey data analysis.....	35
3.2 Key findings analysis	35
3.3 Reporting.....	35
Phase One: Gathering initial views	36
4 Vision Paraparaumu survey	36
4.1 What makes Paraparaumu special?	37
4.2 What is working well in Paraparaumu?	39
4.3 How can things be improved in Paraparaumu?	40
4.4 What is your vision for Paraparaumu?	42
Phase Two: Testing what we have heard so far	46
5 Vision follow up survey	46
5.1 Does this reflect what's important to you?	46
5.2 Is there anything missing?.....	49
Broader community engagement.....	52
6 Relevant Insights from the Long-Term Plan Process.....	53
6.1 Economic Development.....	53
6.2 Infrastructure & Asset Management.....	53
6.3 Community Facilities & Services	53
6.4 Environmental Protection & Climate Change.....	54
6.5 Transparency & Consultation	54
7 Needs Assessment: Insights from Kāpiti young people.....	55

1 Executive summary

1.1 Why Vision Kāpiti 2060?

A clear district-wide vision will help guide planning, decision making, programmes, services, and advocacy, for decades to come.

Elected members want to hear from their communities, about what matters most, what change people want to see and their aspirations for the future of our District.

The first stage is to develop a Vision for the District and its underlying communities.

This will be followed by two further stages:

- Identifying and testing pathways and priorities for achieving our Vision; and finally
- Developing a blueprint for action, mapping out our key steps and moves to realise our Vision.

Once complete, the Vision and blueprint will outline what things will be prioritised over the next 30 years (to 2060), and how Council will work with its iwi partners, central and local government, and key stakeholders to achieve our collective Vision.

This process replaces the Local Outcomes Statements developed across the District from 2007 - 2017.

1.2 Overview of Vision Paraparaumu engagement and feedback

The Community Board has worked to capture feedback from the Paraparaumu community to help shape and refine Vision Paraparaumu. This has occurred across two phases of engagement.

Phase One: Gathering initial views

From August 2023 to January 2024 feedback was captured from local Paraparaumu residents through:

- An online survey identifying the local areas people associate with, what makes Paraparaumu unique, and current and future improvements needed. 70 responses with 213 feedback points
- Feedback at the Paraparaumu Engagement Hub as part of Vision Kāpiti. 246 feedback points
- Submission from the Paraparaumu Beach Business Association identifying opportunities and improvements that could generate more visitors to the area and benefit the whole community. 1 response with a range of feedback points

This feedback was summarised and presented to local communities for further testing as part of Phase Two. This included a detailed report which summarised feedback from all sources, and feedback received on local survey questions.

Phase Two: Testing what we have heard so far

From April to July 2024 the summary of feedback from Phase One was shared to test whether what had been captured so far reflected what was important and if there was anything missing.

Further feedback was captured from engagement during this period including:

- An online survey asking if what is captured so far reflects what's important and if there is anything missing. 27 contributors' responses with 84 feedback points
- Feedback from the Engagement Hub at Paraparaumu Library and Coastlands. 54 contributors' responses with 194 feedback points

Broader community engagement

In addition to the above engagements, the Community Board has sought to engage and seek feedback with from residents through a number of other ways including:

- Train station flyer drop and discussion with commuters
- Discussion with business owners
- Discussion with special interest groups such as Kāpiti WEA (education group), Kāpiti Horticultural Society, Kāpiti Rotary and retirement village groups
- Facebook messaging

Other community feedback included

In addition to feedback on Vision process, a number of recent community engagements have provided feedback on what's missing or important for the Paraparaumu area. By incorporating these supplementary sources, we gain a more comprehensive understanding of community priorities and concerns. This multi-faceted approach allows us to identify recurring themes across different engagement processes, providing a robust foundation for the future. This includes:

1. Long Term Plan 2024-2034 feedback Key insights identified from the full set of feedback (371 responses with 1,598 feedback points)
2. Youth Needs Assessment Key insights from 94 responses

The inclusion of Long Term Plan insights offers valuable context on infrastructure priorities, financial considerations, and community initiatives. Meanwhile, the Youth Needs Assessment provides crucial perspectives on the experiences and aspirations

of young people in Paraparaumu. Together, these additional sources enrich and validate the themes identified in the primary Vision Paraparaumu engagement, ensuring a holistic view of community aspirations.

This report

This report provides an overview of all feedback shaping Vision Paraparaumu. This includes:

- Consolidated findings from all feedback relevant to Paraparaumu.
- A summary of the 'Phase One' local survey results.
- A summary of 'Phase Two' feedback on what's important and gaps.
- A summary of what we heard from additional information sources, including:
 - Long Term Plan 2024-34 consultation, which covered topics such as infrastructure priorities, financial management, housing, and community initiatives.
 - A needs assessment focused on young people in Kāpiti, conducted through Zeal Paraparaumu, which provided crucial insights into the experiences, challenges and aspirations of local youth.

The analysis of the combined data has been structured using Council's Doughnut Economic Framework. This provides a holistic view of the community's well-being, considering social, cultural, environmental, and economic factors. The key findings are organised into themes that align with the various dimensions of the Doughnut Framework.

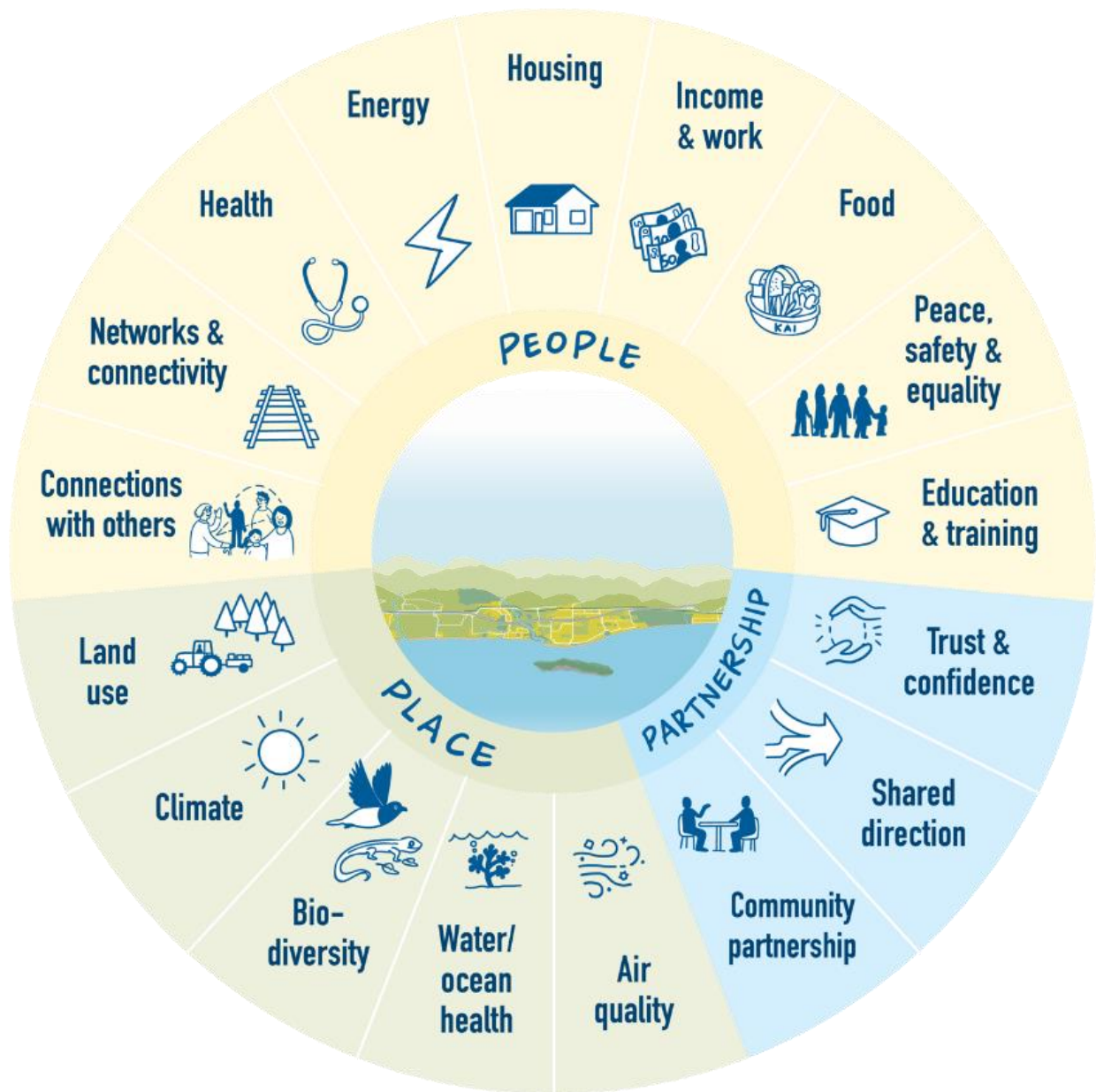


Figure 1: The Doughnut Economic Framework

1.3 Central Themes

This section summarises the key findings that emerged from the community engagement process. It highlights the dominant priorities and aspirations expressed by the residents of Paraparaumu across various domains of the Doughnut Economic Framework.



Āhurangi | Climate: The community prioritises environmental sustainability and climate resilience, focusing on adapting to climate change impacts, efficient waste management and recycling, and preserving the enjoyment of the local climate. There are also calls for sustainable energy initiatives.



Aiowhaitika mō te tangata | Peace & Safety: Residents value enhancing safety while maintaining the area's peaceful atmosphere, with suggestions for improved public safety measures like increased police presence and initiatives for vulnerable groups. There are concerns about rising teenage crime and the potential increase in social problems due to high-density public housing.



Te hononga ki ētahi atu | Connections with others: The community emphasises preserving Paraparaumu's unique character, improving public spaces and facilities for diverse age groups, and fostering a family-oriented environment with cultural events and activities. There's a strong desire for more youth-focused activities and facilities.



Hanga Whare | Housing: Key priorities include balancing housing intensification with preserving the area's character, improving housing affordability, and developing infrastructure for new housing areas while considering community concerns. There's significant opposition to high-density housing developments.



Hauora | Health: The community seeks better access to healthcare services, including hospitals, GPs, and local healthcare facilities. There's a strong desire for establishing a local hospital or emergency services to reduce reliance on facilities in Wellington or Hutt Valley.



Hauora Awa/Moana | River/Ocean Health: Residents highly value the proximity to rivers, beaches, and the ocean, highlighting the importance of maintaining clean waterways and access to these natural assets. There are calls for improved stormwater and waste management systems.



He Waka eke noa/A Shared Waka | Community Partnership: The community desires improved local governance, communication, and engagement, emphasising democratic inclusivity, collaboration, and strengthening community input in decision-making. There are concerns about council spending, debt, and potential rate increases.



Kai | Food: Residents enjoy the variety of cafés and restaurants in Paraparaumu and would like to encourage investment in both local dining and shopping options.



Konarau Koiora | Biodiversity: The community strongly values the natural environment and biodiversity, prioritising the protection and enhancement of beaches, waterways, wetlands, and green spaces. There's a call for more tree planting and preservation of green spaces.



Mātauranga | Education & Training: Expanding educational opportunities through more courses and facilities and establishing new schools is a priority to cater to the growing community's needs. There's also a desire for more vocational training options.



Ngā Hono | Networks & Connectivity: Key focus areas include improving public transport accessibility, extending and maintaining cycleways and footpaths, enhancing road safety, and addressing traffic management. There's a strong emphasis on developing sustainable transport networks.



Ohunga | Income & Work: The community seeks to revitalise the town's appeal by addressing vacant properties, encouraging investment in local shopping and dining, promoting employment opportunities, and enhancing the tourism industry. There's also interest in developing Kāpiti Airport into a multi-use precinct to boost economic opportunities.



Wai | Water: Residents prioritise addressing water quality issues and improving water services to ensure a safe and sustainable supply for the community. There are calls for better infrastructure in water management and flood protection.



Whakamahi/Hauora Whenua | Land Use & Quality: For sustainable growth, it is crucial to balance housing intensification with preserving the area's character, manage infrastructure development, and consider community concerns regarding high-density housing and urban sprawl. There's a need for thoughtful urban planning that respects the town's relaxed, family-friendly atmosphere.

2 A summary of all feedback on Vision Paraparaumu

This section provides more detail on views for areas of the doughnut model, representing key needs for the community. In this section, the most common topics that emerged from the community feedback are highlighted for each theme, along with supporting quotes or discussion points. These insights shed light on the Paraparaumu community's values, priorities, and concerns, offering valuable guidance for the Council's decision-making processes and future planning efforts.



2.1 Place

Below is a summary of the key findings related to 'Place'.



The feedback related to Āhurangi | Climate highlighted a strong focus on climate change and sustainability issues. Residents emphasised the need for both mitigation and adaptation strategies, while some expressed concern about climate change fearmongering. There was a specific request for improved signage for tsunami safe zones, indicating awareness of climate-related risks. There was a call for efficient waste management and improved recycling systems. The community stressed the importance of sustainable practices, including enhancing natural spaces and improving sustainable transport options, particularly train services. Sustainable energy initiatives were also highlighted. Residents expressed appreciation for the local climate and weather. Overall, the feedback reflected a community keen on balancing environmental responsibility with quality of life, whilst preparing for potential climate-related hazards.

The most common themes that emerged from community feedback are:

Enjoy the local climate & weather

The community feedback highlights a strong appreciation for the pleasant weather and climate in a general sense. Residents value the area's warmer temperatures, noting it's typically about 3 degrees warmer than Wellington. The favourable weather is often mentioned alongside other natural assets like beaches and rivers, contributing to the overall quality of life. Many appreciate the combination of a good climate with proximity to both

coastal and rural environments. The weather is seen as an asset that enhances outdoor activities and contributes to the relaxed, enjoyable lifestyle that residents cherish.



Focus on climate change

The community feedback emphasises a strong focus on climate change mitigation and adaptation. Residents call for more sustainable development practices, including higher density housing in less vulnerable areas and promotion of renewable energy, particularly community solar projects. There's support for the Council's approach to coastal erosion risk assessment and a desire for enhanced resilience measures. Many want urban planning that prioritises pedestrian movement and green infrastructure to combat the urban heat island effect. The community also emphasises the need for adaptive governance and stakeholder collaboration in addressing climate challenges. However, others noted concern about climate change fearmongering.

Other themes included:



- Enhance natural spaces, including bike paths
- Encourage sustainable practices.

Efficient waste management & recycling systems

The community feedback highlights a strong desire for improved waste management and recycling services. Residents express frustration with overflowing rubbish bins, particularly in public spaces like McLean Park, and call for more frequent collections. There's a demand for comprehensive recycling programmes and support for residents to be more sustainable. Some suggest offering discounts on native plants and assistance with setting up home vegetable gardens. The community emphasises the need for better rubbish services to help the environment and reduce costs for residents. Overall, there's a clear call for the Council to prioritise waste reduction and recycling initiatives.

Support waste minimisation



Enhance our recycling options





Hauora Awa/Moana River/Ocean Health

The feedback related to Hauora Awa/Moana | River/Ocean Health highlighted the importance of water management and coastal proximity. Residents called for improvements to stormwater and waste management systems, emphasising the need for proper maintenance of these infrastructure assets. There was a clear appreciation for the area's natural water features, with residents valuing their proximity to local rivers, seaside, beaches, and the ocean. This suggests a community that is both aware of the need for effective water management infrastructure and deeply connected to its coastal and river environment. The feedback reflects a desire to balance urban water management with the enjoyment and preservation of natural water resources.

The most common themes that emerged from community feedback are:

Proximity to the seaside & beaches

The community feedback strongly emphasises the importance of the coastal environment. Residents highly value the beaches, highlighting their accessibility and natural beauty. Many appreciate the unobstructed views of Kāpiti Island and the relaxed, beachy atmosphere. The shoreline is seen as a hub for

various activities, including walking, cycling, and water sports. Beachfront amenities like cafés and the Saturday Market are popular. The coastal area is often mentioned alongside other natural features like parks and reserves, contributing to the town's appeal and lifestyle.



Proximity to the ocean & sea

The community feedback emphasises the significance of proximity to the ocean. Many appreciate the connection between the sea and other natural features like native bush and hills. The ocean is seen as a key part of the area's identity, contributing to its unique ecosystem and offering opportunities for recreation and innovation. The coastal location is often highlighted as a distinctive advantage, enhancing the quality of life and fostering a strong sense of place.

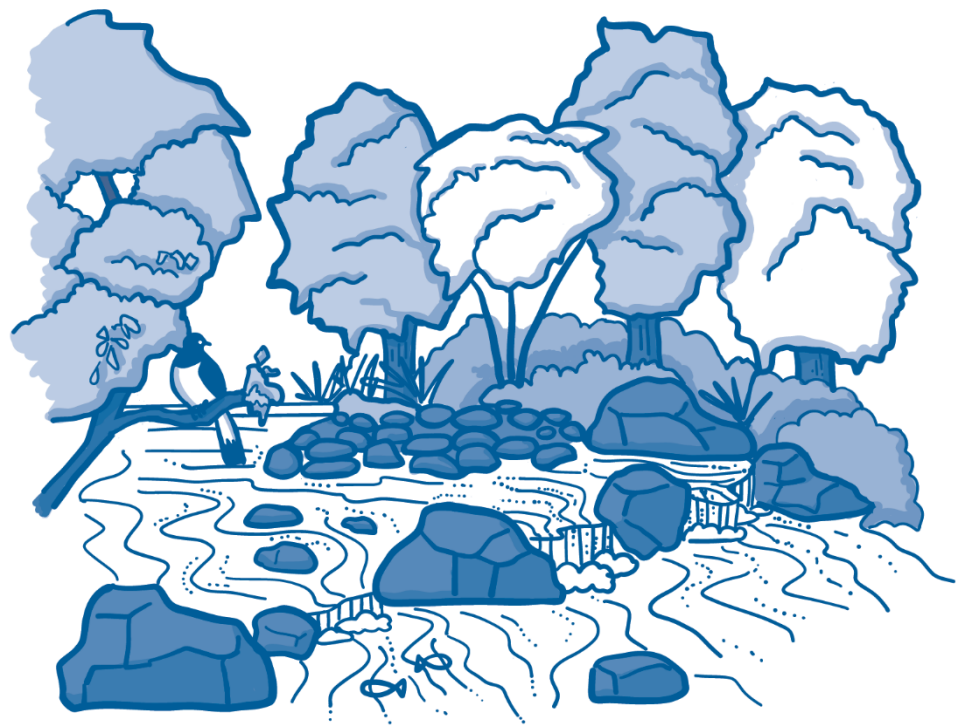
Proximity to local rivers

The Paraparaumu community value the river estuaries alongside the beaches, highlighting their contribution to the area's natural beauty. The streams are noted as enjoyable spaces for cycling and walking, adding to the relaxed atmosphere. Overall, the waterways, including rivers and streams, are seen as integral parts of the green and aquatic landscape, enhancing the appeal of Paraparaumu.

Other themes included:



- Improvements to stormwater systems
- Improvements to waste management
- Maintain stormwater and wastewater systems.





Kanorau Koiora Biodiversity

The feedback related to Kanorau Koiora | Biodiversity emphasised a strong connection to the natural environment and a desire for its preservation. Residents expressed enjoyment of local parks, reserves, and wildlife, particularly marine and freshwater bird life. There was a clear focus on environmental conservation, with calls to protect beaches, waterways, and green spaces in Kāpiti. The community valued their proximity to nature, including Kāpiti Island, mountains, and hills. Tree planting and green space preservation were highlighted as priorities. Residents advocated for more parks and the preservation of open spaces. There was an emphasis on promoting natural assets whilst balancing development with environmental needs. Overall, the feedback reflected a community deeply invested in its natural surroundings and committed to their protection and enhancement.

The most common themes that emerged from community feedback are:

Protect beaches, waterways & green Kāpiti

The community feedback strongly emphasises the need to protect and enhance the natural environment. Residents call for increased tree planting in green spaces, verges, and along waterways. There's a strong desire to keep vehicles off beaches and protect dunes. Many want to see improved management of rivers and streams, including cleaning and restoration efforts. The community supports creating more urban green spaces, wildflower meadows, and

native plantings to increase biodiversity. There's also a focus on sustainable development that preserves wetlands and peatlands while maintaining the area's coastal character.



Proximity to Kāpiti Island

The community feedback highlights Kāpiti Island as a significant asset to Paraparaumu. Residents value the unobstructed views of the Island from the mainland, considering it an integral part of the local scenery. The Island is often mentioned alongside other natural features like beaches and ranges, contributing to the area's overall appeal. There's appreciation for the island's ferries as a local attraction. Some residents express concern about potential development that might obstruct views or commercialise access to the island. Overall, Kāpiti Island is seen as a unique feature that enhances character and tourist appeal.

Proximity to nature

The community feedback strongly emphasises the close connection to nature as a key asset. Residents value the diverse natural environment, including beaches, native bush, and Kāpiti Island. Many appreciate the balance of "small town" living with easy access to outdoor activities. The area's natural beauty, including unobstructed views and green spaces, is frequently mentioned. There's a strong desire to preserve these natural features, with some concern about development potentially impacting the town's connection to nature. Overall, proximity to nature is seen as integral to local character and quality of life.

Other themes included:



- Enjoy visiting local parks and reserves
- Proximity to mountains and hills
- Focus on environmental conservation.





The feedback related to Wai | Water highlighted significant concerns about water management and quality. Residents expressed worries about both water quality and supply, calling for improved water services overall. There was a particular emphasis on addressing issues related to water quality and wastewater management. The community advocated for enhanced water management practices, reflecting a desire for more efficient and sustainable use of water resources. Overall, the feedback indicated that water quality and management are key priorities for the community, with a clear call for improvements in these areas.

The two themes that emerged from community feedback are:

Improve water services

The community feedback indicates a mixed view on water services in Paraparaumu. Some residents appreciate the existing water meter system, noting it has helped avoid problems faced by other councils. However, there's a call for prioritising spending on urgent infrastructure needs, including stormwater upgrades. Concerns are raised about substandard drainage in coastal areas. Some residents want the Council to focus on basic services like water before non-essential projects.

Address concerns around water quality & waste

The community feedback highlights concern about water quality and waste management. Residents call for better water testing of local waterways, particularly the Mazengarb and its tributaries. There's worry about potential sewage discharge into the sea due to increased housing development straining infrastructure capacity. There's also a desire for improved stormwater management, especially in coastal areas prone to flooding. Overall, residents want assurance that water and waste infrastructure can support current and future population growth.



Whakamahi/Hauora Whenua Land Use & Quality

The feedback related to Whakamahi/Hauora Whenua | Land Use & Quality centred on balancing land use for development with preserving environmental and aesthetic quality. Residents expressed concerns about high-density housing and urban sprawl impacting local character and natural areas, particularly wetlands. There was emphasis on protecting open spaces, including the airport and beachfronts. The community called for careful zoning and land use regulations to maintain the area's unique qualities. Whilst acknowledging the need for housing development, residents stressed the importance of implementing appropriate infrastructure and flood mitigation measures. The feedback reflected a desire for thoughtful land use planning that respects the local environment, balances housing needs, and maintains the area's cherished green spaces and gardens.

Much of this feedback is mirrored under feedback in Hanga Whare | Housing. This reflects the close relationship between land use and housing concerns, and the strong importance of housing issues to the community.

The most common themes that emerged from community feedback are:

Concern regarding high-density housing

The community feedback expresses significant concern about high-density housing developments. Many residents oppose the proliferation of such housing, arguing that land isn't a limiting factor in Kāpiti. There's worry about the creation of 'ghettos' or 'slum-like' conditions, particularly with large public housing projects. Residents prefer maintaining the town's seaside character with normal-sized sections and gardens. Some suggest limiting building heights to 2-3 storeys

maximum. There's also concern about overcrowding, lack of parking, and reduced outdoor spaces for families and children.



Balance intensification with character preservation

The community feedback emphasises a desire to maintain the unique seaside character while managing growth. Residents express concern about over-intensification, preferring thoughtful urban design that respects the town's relaxed, family-friendly atmosphere. Many advocate for preserving green spaces, including wetlands and waterways, and ensuring new developments include gardens and outdoor areas. There's support for more thoughtful planning that allows for some density increase while avoiding monotonous suburbia. Overall, the community wants careful progress that retains coastal community feel and lifestyle.

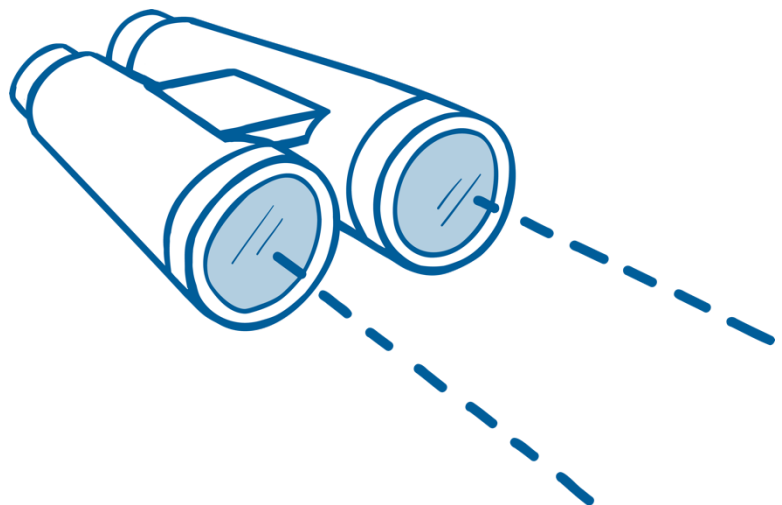
Infrastructure development for new housing areas

The community feedback reveals mixed views on housing development. Some residents welcome new housing, particularly affordable options for low-income families and the elderly. However, there's significant concern about infrastructure keeping pace with development. Many call for improved roads and facilities to support population growth, emphasising the need for future-proofing before approving new housing. Overall, there's a desire for thoughtful planning that balances housing needs with infrastructure capacity.

Other themes included:



- Requests to protect the airport.



2.2 People

Below is a summary of the key findings related to 'People'.



Aiowhaitika mō te tangata Peace & Safety

The feedback related to Aiowhaitika mō te tangata | Peace & Safety highlighted a balance between appreciating the area's peaceful atmosphere and addressing safety concerns. Residents generally felt the area was safe and valued its relaxing environment. However, there were calls for enhanced community safety measures, including increased police presence, improved animal control, and better lighting in public spaces such as courts and skate parks. Specific suggestions included installing cameras, establishing neighbourhood watch programmes, and requiring bells on bicycles. There was particular emphasis on ensuring the safety of children and the elderly. Some residents advocated for policies promoting healthier food and drink options. While privacy was mentioned as a concern, the overall sentiment reflected a desire to maintain the area's safe and tranquil character while implementing targeted safety improvements.

The most common themes that emerged from community feedback are:

Improve safety

The community feedback emphasises a strong desire for improved safety measures. Residents express concern about rising teenage crime. There's worry about the potential increase in social problems due to high-density public housing. Many want Paraparaumu to remain a safe, family-friendly town with properly fenced

playgrounds and secure outdoor spaces. Some residents fear an increase in antisocial behaviour and drug-related issues. Overall, there's a clear desire for a community where all residents, particularly children and the elderly, feel safe and comfortable, with better recreational facilities to engage youth positively.

Enjoy the relaxing & peaceful atmosphere

The community feedback strongly shows appreciation for the relaxed, laid-back atmosphere. Residents value the peaceful lifestyle, often citing it as ideal for raising children. The coastal environment, with its beaches and cycling paths, contributes significantly to this relaxed vibe. Many enjoy the quiet, underdeveloped nature of the area, contrasting it with more bustling urban centres. Overall, the community cherishes the tranquil, beach-town character.

Increase police presence

The community feedback indicates a desire for increased police presence and effectiveness in Paraparaumu. Residents express concern about rising crime rates, particularly teenage-related offences. There's a call for empowering police to deal more effectively with criminals. Some suggest implementing community CCTV to address escalating assaults and property damage. Overall, the community wants closer collaboration between local authorities and police to address petty crime and ensure residents' safety.

Other themes included:



- Improve animal safety and control.





Te hononga ki ētahi atu Connections with others

The feedback related to Te hononga ki ētahi atu | Connections with others emphasised a strong desire for inclusive, multi-generational spaces and activities. Residents appreciated the area's village feel, slower lifestyle, and friendly atmosphere, valuing the sense of belonging and diverse local culture. There were calls for improved and increased community facilities, including libraries, playgrounds, skate parks, pools, and spaces for gatherings and events. The community stressed the importance of catering to all age groups, with particular emphasis on youth-focused activities and facilities for the elderly and disabled. Outdoor and indoor recreational opportunities were highly valued, with requests for more sports facilities, walking areas, and dog parks. The integration of Māori culture and history was seen as important, alongside efforts to improve ethnic diversity. Residents advocated for better public transport and parking to improve accessibility. Overall, the feedback reflected a community keen on preserving its small-town character while enhancing public amenities and fostering social connections across diverse groups.

The most common themes that emerged from community feedback are:

Create & maintain inclusive spaces

The community feedback emphasises a strong desire for more diverse and well-maintained public spaces. There's significant interest in improving beach areas with facilities like picnic spots, BBQs, and playgrounds. The community supports the development of green spaces, such as a central park with flower gardens. There are also calls for more community

gardens, a town square for markets and buskers, and library 'nooks' in neighbourhoods to foster connections.



Development of youth-focused activities & facilities

The community feedback strongly emphasises the need for more youth-oriented spaces and activities.

Residents call for additional skate parks, water parks, and indoor sports centres catering to various skill levels. There's a desire for better-equipped and fenced playgrounds, especially near the beachfront. The community wants more engagement opportunities for youth with marae structures and a greater variety of shops to attract younger generations. Overall, there's a clear demand for diverse, safe, and engaging facilities for children and teenagers.

Goof facilities to support young people was a strong theme across all feedback. Youth feedback also indicates that Zeal Paraparaumu is highly valued by young people as a social hub and safe space. Users have expressed desires to improve it further, including better information about services and events, expanded staff support, more creative opportunities and improved art spaces. Zeal Paraparaumu is seen as a crucial resource by those who use it.

Support for community sports & outdoor activities

The community feedback strongly emphasises the need for diverse sports and outdoor facilities. Residents call for upgraded, year-round sports fields and more outdoor spaces for walking and cycling. There's significant interest in developing recreational centres with multi-purpose courts, roller skating rinks, and gym facilities. Many want improved skate parks and water parks for teens. The community also desires better cycleways, walkways and bridleways. There's a focus on creating family-friendly outdoor spaces, including fenced playgrounds and areas for community events like markets.

Other themes included:



- Thriving connected community that is supportive of others
- Support for community sports and outdoor activities
- More cultural events, activities and promotions.

Hanga Whare Housing

The feedback related to Hanga Whare | Housing highlighted a complex set of priorities and concerns. Balancing housing intensification with character preservation emerged as a key issue, alongside worries about high-density housing. Affordability was a major concern, with calls for strategies to ensure accessible and affordable housing for all, including the elderly and those with health issues. Residents expressed interest in diverse housing options, from social housing to various density developments, while emphasising the need for appropriate infrastructure. The community sought a balance between addressing housing shortages, maintaining affordability, and preserving local character, reflecting the multifaceted nature of the area's housing challenges.

Much of this feedback is mirrored under feedback in Whakamahi/Hauora Whenua | Land Use & Quality. This reflects the close relationship between land use and housing concerns, and the strong importance of housing issues to the community.

The most common themes that emerged from community feedback are:

Concern regarding high density housing

Community feedback expresses significant concern about high-density housing developments. Many residents oppose the proliferation of such housing, arguing that land isn't a limiting factor in Kāpiti. There's worry about the creation of 'ghettos' or slum-like conditions, particularly with large public housing projects. Residents prefer maintaining the town's seaside character with normal-sized sections and gardens. Some suggest limiting building heights to 2-3 storeys maximum. There's also concern about overcrowding, lack of parking, and reduced outdoor spaces for families

and children. Many want to preserve the small-town, family-friendly atmosphere.



Balance intensification with character preservation

The community feedback emphasises a strong desire to maintain the unique seaside character while managing growth. Residents express concern about over-intensification, preferring thoughtful urban design that respects the town's relaxed, family-friendly atmosphere. Many advocate for preserving green spaces, including wetlands and waterways, and ensuring new developments include gardens and outdoor areas. There's support for some increased density in urban areas, but with better design that contributes positively to the streetscape. Overall, the community wants careful progress that retains a coastal community feel, while providing modern amenities and housing options.

Maintain affordable rates

The community feedback expresses a strong sentiment that rates in the District are too high and need to be kept affordable. Residents are calling for a reduction in rates, cuts to 'unnecessary' spending, increased transparency, and fiscal responsibility from the Council. The recent 20% rates increase is seen as outrageous and unaffordable for many, and suggestions include stopping borrowing, holding councillors liable for budget blowouts, and selling assets to fund debts.

Other themes included:



- Infrastructure development for new housing areas
- Implement high density housing and apartments
- Focus on housing development.





The feedback related to Hauora | Health emphasises the desire for inclusive, multi-generational spaces and activities. Residents value the area's friendly atmosphere and wish to enhance public amenities, particularly healthcare services, recreational facilities, and support for the elderly and disabled. The integration of Māori culture and efforts to improve ethnic diversity are seen as important. The community also stresses the importance of public health policies that encourage healthy habits.

The most common themes that emerged from community feedback are:

Establishment of local healthcare facilities

The community feedback indicates a need for establishing and improving healthcare facilities in the District. Suggestions include collaborating with educational institutions like Whitireia Te Pūkenga to train and retain healthcare assistants and support workers in the area, ensuring easily accessible services for the elderly living alone, and providing more medical options, such as a 24-hour medical facility. Additionally, there are calls for better infrastructure to support population growth.

Concern regarding lack of hospital services

The community feedback highlights a significant concern about the lack of hospitals in the District. Residents express frustration about having to travel to Wellington or the Hutt Valley for hospital services and to see certain specialists. There is a strong desire for a local hospital to be established, with some suggesting it

should be a small public hospital open 24/7. The need for a hospital is seen as increasingly urgent.

Improve access to hospital services

The community feedback emphasises the importance of improving access to hospitals and healthcare services. Some residents propose having the option to choose between Wellington or Lower Hutt hospitals based on proximity. Improving access to hospitals and healthcare is seen as a crucial aspect of supporting the community's well-being.

Other themes included:

- Improve access to GP services
- Support for healthy recreational activities and facilities
- Correlation between environmental and public health.



Kai Food

The feedback related to Kai | Food highlights that residents enjoy the variety of cafés and restaurants in Paraparaumu and would like to encourage investment into both.

The two themes that emerged from community feedback are:

Enjoy the variety of cafés and restaurants

The community feedback highlights the enjoyment of the variety of cafés and restaurants in Paraparaumu. Residents appreciate the fantastic eateries available, with many mentioning the pleasure of cycling or walking along the beaches, streams, and trails, and then stopping for coffee, pies, or other refreshments at local cafés. The Kāpiti Food Festival is also noted as a drawcard. The combination of the coastal setting, relaxed atmosphere, and great dining options is seen as a significant asset for the area.

Encourage investment in local dining

The community feedback suggests a desire for encouraging investment in local dining options. Residents want more vibrant restaurants, cafés, and eateries, particularly around the beach areas. Ideas include allowing cafés to have outdoor seating on pavements for alfresco dining, food caravans for easy access to refreshments near the waterfront and developing the tourist potential of Kāpiti Island with embarkation facilities at Paraparaumu. Encouraging a variety of dining establishments is seen as a way to enhance the area's appeal for both locals and visitors alike.





Mātauranga Education & Training

The community feedback related to Mātauranga | Education & Training highlights the desire for inclusive, multi-generational spaces and activities, valuing the area's friendly atmosphere and diverse culture. Residents call for improved facilities catering to all ages, particularly youth and the elderly, as well as better recreational opportunities. The integration of Māori culture and ethnic diversity is seen as important. The community also emphasises the need for improved education support, courses, facilities, and pathways to employment. Overall, the feedback reflects a community seeking to preserve its character while enhancing amenities, fostering connections, and providing better educational and employment opportunities.

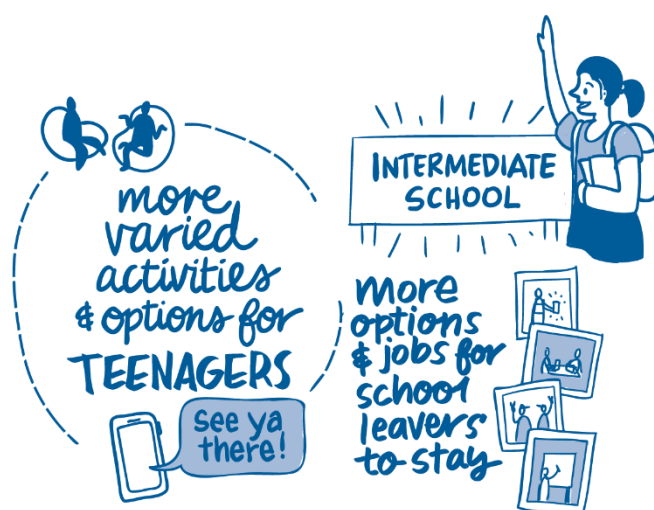
The two themes that emerged from community feedback are:

More educational courses and facilities

Community feedback emphasises the importance of providing more educational courses and facilities. Collaborating with institutions like Whitireia Te Pūkenga to offer programmes such as the NZ Certificate in Health & Wellbeing and work experience placements in aged care facilities is seen as a way to train and retain skilled workers in the area. There are also suggestions for developers of large projects to contribute to the extension of community services, including education, to support the needs of new residents. Providing health and education facilities, as well as employment opportunities, is considered crucial for keeping young people in the region. Additionally, there is a call for more books in libraries and computer classes to further support education in the community.

New schools

Community feedback highlights the need for new schools. There are suggestions for bringing an intermediate school into the Kāpiti area and returning to having separate schools for intermediate-aged students. Additionally, there is a desire for good schools and sporting opportunities for children in the region.





Ngā Hono Networks & Connections

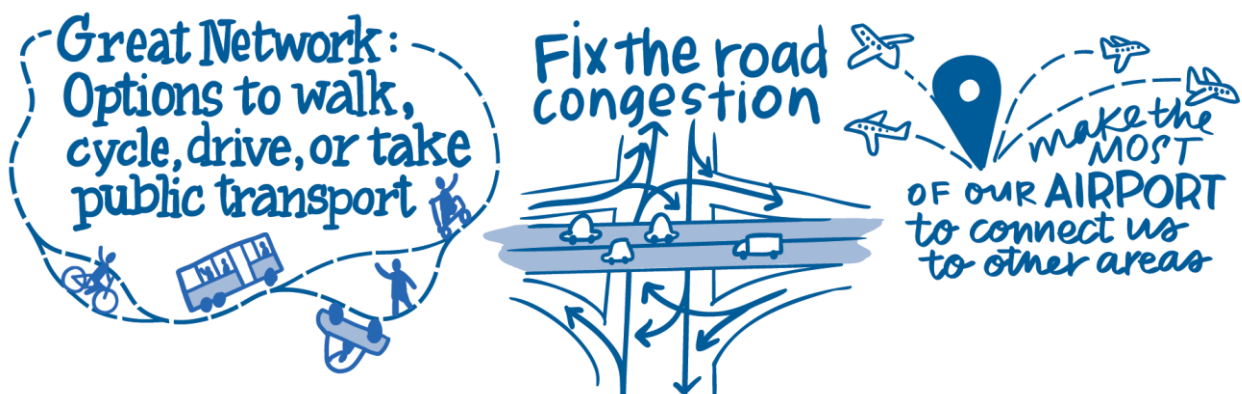
The feedback related to Ngā Hono | Networks & Connections highlights the need for accessible, reliable public transport, enhanced cycleways, walkways, and bridleways, and improved road safety and traffic management to accommodate growth and ensure accessibility for all. Residents advocate for infrastructure investment, including better lighting, public amenities, and parking facilities, as well as the development of sustainable transport networks and connections. The community also emphasises the importance of extending the public transport network, improving transport hubs, and enhancing connectivity to key facilities and areas such as the beach, airport and commercial areas. Overall, the feedback reflects a community seeking to improve transport infrastructure and services to meet the needs of a growing population while promoting sustainable and accessible modes of transport.

The most common themes that emerged from community feedback are:

Accessible, reliable and extended public transport network

The community feedback strongly emphasises the need for improving public transport, with a focus on cheaper, more reliable, and frequent train and bus services connecting to Wellington. Suggestions include advocating for better services, introducing direct bus routes using the expressway, ensuring buses meet trains in the evenings, and increasing car parks at transport hubs.

Innovative solutions such as tramlines and light rail are also proposed. Enhancing public transport is seen as crucial for reducing car dependency, supporting social connectivity, and addressing climate change concerns, while leveraging the District's strategic location as a hub for transport and logistics technologies.



Improve traffic management for increased cars

Community feedback emphasises significant concerns about traffic management and congestion, particularly along Kāpiti Road. The introduction of numerous traffic lights, roundabouts, and slow zones is seen as unnecessary and contributing to delays and frustration. Residents suggest better road surfaces, spreading out on and off ramps, using cameras to enforce red light compliance, and setting time limits for car park users to ensure availability. Improving traffic management is considered crucial to accommodate the growing population and increased car usage in the District.

Extend and maintain cycleways

Community feedback emphasises a strong desire for extending and maintaining cycleways, walkways and bridleways, with residents expressing appreciation for the existing trails that connect the area and provide access to beaches, green spaces, and local amenities. However, there are concerns about the safety of cyclists and pedestrians on shared pathways, particularly regarding speeding e-bikes, cyclists, and e-scooters, as well as the lack of consideration some cyclists show towards pedestrians. Suggestions include clearer signage, educating cyclists, and potentially creating pedestrian-only zones in certain areas.

Other themes included:



- Improve road safety and maintenance with increased cars
- Extend and maintain footpaths
- Improve roads.





Ohunga Income & Work

The feedback related to Ohunga | Income & Work highlights the importance of supporting local businesses and the economy while preserving the area's unique character and appeal. Residents enjoy visiting local shops and emphasise the need to address vacant properties and improve the visual appeal of businesses to enhance the overall town atmosphere. The community also calls for the creation of hospitality hubs, the encouragement of investment in local shopping and dining, and the promotion of the region through targeted advertising and branding initiatives. Additionally, there is a desire to develop the tourism industry and support local business networks and community groups. Overall, the community seeks to strike a balance between economic development and maintaining the area's small-town charm, while fostering a supportive environment for local businesses to thrive.

The most common themes that emerged from community feedback are:

Encourage investment in local shopping

Community feedback emphasises a strong desire for encouraging investment in local shopping options. Residents see the need to update and modernise the Coastlands mall, suggesting the addition of a greater variety of shops such as Kmart, Chemist Warehouse, and Bunnings to cater to the younger generation and

provide a better shopping experience. There are also calls for more boutique-style shops and a unique vision for the mall to create a distinct identity. Improving parking accessibility and safety around the growing shopping area is seen as crucial to accommodate the influx of new families in the region.



Promote employment and jobs

The community want diverse employment opportunities, particularly for youth, to reduce commuting and retain local talent. Suggestions include collaborating with educational institutions to provide training, increasing business space, attracting government departments and new industries, and proactively working to make the district a destination for work and leisure. Creating varied job options is seen as crucial for the future of the community.

Other themes included:



- Enhance tourism industry and new branding
- Address vacant properties and improve town appeal.

Support for local businesses and groups

Paraparaumu recognises the importance of supporting local businesses. Residents highlight the need for the Council to be more proactive in attracting new businesses, helping entertainment businesses succeed, and providing a point of difference to make Kāpiti attractive to tourists. Capitalising on opportunities like Transmission Gully and the Airport to bring in industries and jobs is seen as crucial for the economic prosperity and future vibrancy of the area.



2.3 Partnership

Below is a summary of the key findings related to 'Partnership'.



He Waka eke noa /A Shared Waka Community Partnership

The feedback related to He Waka eke noa/A Shared Waka | Community Partnership emphasises the importance of democratic inclusivity, collaboration, and community involvement in decision-making processes. Residents express concern about Council spending, debt, and potential rate increases, with a desire for improved communication, transparency, and a focus on core Council functions. The feedback suggests enhancing communication through various channels, incorporating information boards and signage, and strengthening community input in decision-making. There is also a call for improved Council governance, reduced expenditure, and better Māori representation. Overall, the community seeks a thriving, connected, and supportive environment with active engagement between residents and the Council.

The most common themes that emerged from community feedback are:

Emphasis on democratic inclusivity & collaboration

Paraparaumu residents value democratic inclusivity and collaboration. Residents highlight the need for the Council to respect people's skills and experience, not just those of employed staff, and to work alongside community groups, charities, and social sector organisations to support the community. Suggestions include lowering rates for charities, reducing barriers and costs, and being closely involved in understanding their

purpose and mission. The Council is encouraged to help community groups connect and collaborate to provide activities and support for residents. However, there is a cautionary note against taking a position that values the voices of one demographic over another, as this is seen as fundamentally anti-democratic. Overall, the feedback calls for empowering community responsibility and enabling people to engage with the Council through various means.

Improve communication & reporting

The community feedback emphasises the need for improved communication and transparency between the Council and residents. Key suggestions include clearer consultation processes, in-person feedback opportunities, realistic communication, involvement of local iwi, and better use of billboards and notice boards for public information. Concerns are raised about the lack of transparency and public awareness regarding the Coastal Advisory Panel (CAP) and the enforcement of local rules.

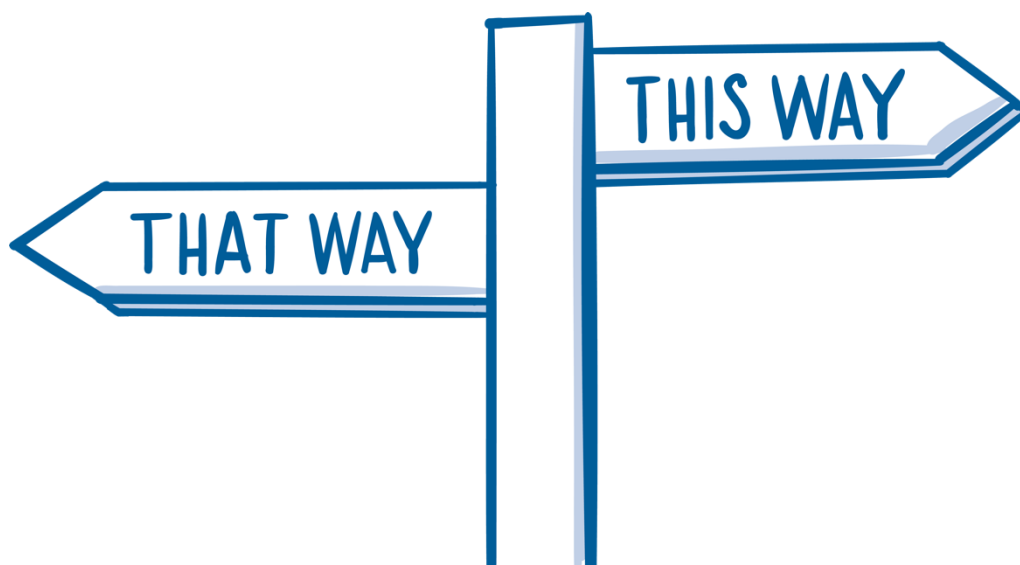
Other themes included:



- Concern about Council spending and rates increases
- Focus on core Council functions
- Improve Māori representation

Strengthen community input & decision making

Residents want better input into Council decisions. Residents express concerns about the lack of genuine consideration given to public feedback, calling for better transparency in Council spending, decisions, and third-party interests. Some comments suggested holding councillors more strongly accountable for budget blowouts (with some comments suggesting more personal liability) and desire for a community-run council that is accountable and responsive to ratepayers' needs and opinions.



2.4 Comparison of Vision Paraparaumu and Vision follow up survey results

This section presents the key similarities and differences between the Vision Paraparaumu initial survey and the follow up survey.

2.4.1 Key Similarities

Community connection — Both surveys highlight the importance of community spirit, inclusivity, and the desire for more youth-focused activities and facilities.

Environmental concerns — Both emphasise the community's focus on environmental conservation, including concerns about protecting beaches, waterways, and green spaces.

Infrastructure improvements — Both surveys indicate a desire for enhanced public amenities, improved transportation options, and better infrastructure, particularly regarding road safety and walkways, cycleways and bridleways.

Economic development — Both show support for local businesses and the desire to encourage investment in local shopping and dining options.

2.4.2 Key Differences

Emphasis on Council actions — The follow-up survey places more emphasis on concerns about Council spending, rates increases, and the desire for transparency and accountability in Council decisions.

Climate change — The follow-up survey introduces concerns about climate change "fearmongering," which wasn't prominent in the initial survey findings.

Housing concerns — While both surveys mention housing, the follow-up survey seems to place more emphasis on issues like housing regulations and the balance between development and character preservation.

Health services — The follow-up survey appears to place more emphasis on the need for improved healthcare facilities and services, particularly mentioning the lack of a local hospital and 24/7 emergency services.

Specific project mentions — The follow-up survey mentions specific issues for facilities like indoor sports centres and skating rinks, which weren't highlighted in the initial survey.

Accessibility — The follow-up survey places more emphasis on accessibility issues for disabled and elderly residents.

2.4.3 Implications for Vision Paraparaumu Refinement

Maintain core themes — Retain and strengthen language around community connection, environmental conservation, infrastructure improvements, and economic development.

Emphasise community engagement — Emphasise fostering a connected, inclusive community with a strong focus on youth engagement and intergenerational programmes.

Strengthen environmental commitment — Keep strong language around protecting natural assets, outlining specific conservation strategies and sustainable development practices.

Address infrastructure comprehensively — Articulate strategies for supporting local businesses, attracting investment, and creating a diverse economic base.

Emphasise economic growth — Continue to focus on supporting local businesses and encouraging economic development.

Improve governance transparency — Include commitments to fiscal responsibility, transparent decision-making, and regular community engagement on budgetary matters.

Refine climate change approach — Maintain commitment to addressing climate change, focusing on practical, local-level actions and community resilience.

Refine housing and development goals — Articulate a balanced approach to housing that addresses affordability, sustainability, and preservation of community character.

Prioritise healthcare access — Address growing healthcare concerns by outlining plans for improving local facilities, including hospital and emergency services.

Include specific local priorities — Where appropriate, include a commitment to regular community consultations to identify and prioritise specific facility requirements.

Enhance accessibility — Incorporate strong commitments to universal design principles and strategies for supporting elderly and disabled residents.

Ensure flexibility — Create a vision that guides decision-making whilst allowing for adaptation as community needs evolve.

3 Data analysis methodology

3.1 Survey data analysis

PublicVoice used a step-by-step method called thematic analysis to review the open-ended responses from the Vision Paraparaumu community engagement survey. This method follows five main steps:

1. Understanding the data: Analysts read the survey data multiple times to grasp its content.
2. Initial coding: The survey data was sorted into labelled segments highlighting key points.
3. Identifying themes: These segments were then grouped into broader themes specific to the survey questions.
4. Refining themes: Themes were checked for relevance and clarity within the survey context.
5. Finalising themes: Each theme was carefully defined, possibly with sub-themes, to represent the survey responses accurately.

3.2 Key findings analysis

To generate the key findings, PublicVoice combined the survey data with additional feedback points received from the Paraparaumu Engagement Hub and Paraparaumu Library as part of Vision Kāpiti engagement. The analysis of the combined data was structured using the framework of the Council's Doughnut Economic Framework, which provides a holistic view of the community's well-being by considering social, cultural, environmental, and economic factors.

The key findings were organised into themes that align with the various dimensions of the Doughnut Framework. This approach allowed for a comprehensive understanding of the community's values, priorities, and concerns, extending beyond the specific questions asked in the survey.

3.3 Reporting

For the survey data, tables illustrating the frequency of the key themes have been included to demonstrate the significance of each theme. Only descriptions of the most frequent themes have been included in Section 4, "Key Findings from the Vision Paraparaumu survey," to highlight the main points expressed by respondents.

In contrast, Section 3 reports the key findings and presents the most common topics from the combined data. This section provides a more detailed analysis, offering valuable insights and guidance for the Council's decision-making processes and future planning efforts.

Phase One: Gathering initial views

4 Vision Paraparaumu survey

This section presents the key findings from the Vision Paraparaumu community engagement survey which received 62 responses. The survey asked four questions:

- What makes Paraparaumu special?
- What is working well in Paraparaumu?
- How can things be improved in Paraparaumu?
- What is your vision for Paraparaumu?

The analysis of survey data has been structured using the Doughnut Economic Framework. The key findings are organised into themes that align with the various dimensions of the Doughnut Framework.

The most common topics that emerged from the community feedback are highlighted for each theme. These insights shed light on the Paraparaumu community's values, priorities, and concerns, offering valuable guidance for the Council's decision-making processes and future planning efforts.

4.1 What makes Paraparaumu special?

Respondents were asked what makes Paraparaumu special. Table 1 details the various aspects identified by respondents.

Overview of responses

Biodiversity — Respondents appreciate the natural environment, mentioning fantastic beaches and river estuaries as important aspects of biodiversity. However, some express concern about the negative impact of council decisions on the natural beauty and beachy vibe of the area.

Connections with others — Respondents feel positively about their connections with others in the community. They highlight the support and unity among residents during tough times. They also mention the community's friendliness and note that the area is ideal for bringing up children.

Networks & connectivity — Respondents appreciate the proximity to Wellington and the easy access to public transportation. They also appreciate the small town feel and the availability of various shops and services nearby without the parking issues of larger cities.

Climate & change — Respondents appreciate the warm climate of Paraparaumu more than Wellington. The connection between the warmer weather and outdoor activities and locations was also positive.

Theme	Subtheme	Frequency
BIODIVERSITY		53
	Natural surroundings (beach, parks, hills)	39
	Kāpiti Island	14
CONNECTIONS WITH OTHERS		48
	Relaxed lifestyle	10
	Recreational activities	9
	Community spirit and connectedness	8
	Personal connections and relationships	6
	Small town atmosphere	5
	Cycle trails	4
	Community initiatives and events	3
	Historical and cultural significance	3
NETWORKS & CONNECTIVITY		35
	Access to amenities (shops, cafés, library)	13
	Access to public transport	10
	The location	8
	Proximity to Wellington	4
CLIMATE & CHANGE		12
	Enjoy the local climate and weather	12

Theme	Subtheme	Frequency
EDUCATION & TRAINING		1
	Schooling	1
PEACE & SAFETY		1
	Sense of safety and friendliness	1

Table 1: What makes Paraparaumu special?

Selected quotes

“The people, community organisations and our well-known small business owners. Our natural resources - the beach, our beautiful Island (thank you for saying no to the Gateway- we really didn't think it was appropriate timing or spending) - the climate when it's behaving itself; that we have rural, suburban and coastal environments each within a short journey of the other. People get stuck in and support each other and people going through tough events around the district and country - from kai cupboards to cyclone collections, and more. Love that we have everyone from young to old, lots of families shifting the demographic and hopefully young people who may leave for a short time but return home again.”

What makes Paraparaumu special?

“Beach, proximity to Wellington, good public transport, great eateries, cycle trails, good climate, Kāpiti food festival, Kāpiti Island.”

What makes Paraparaumu special?

“It's beaches, it's history, the Island. We need greater recognition of Māori/iwi history.”

What makes Paraparaumu special?

4.2 What is working well in Paraparaumu?

Respondents were asked what is working well in Paraparaumu. Table 2 details responses from the community.

Overview of responses

Connections with others — Respondents mention the sense of community and great schools as important aspects of their connections with others. They also appreciate the availability of outdoor spaces, such as parks and trails, and the abundance of activities and events happening in the area.

Networks & connectivity — Respondents are pleased with the availability of an airport in the area but express the desire for more flights and a return of Air New Zealand. The wide streets and absence of parking meters are appreciated. There is a strong emphasis on the need for good public transport, emphasising increased rail linkages.

Theme	Subtheme	Frequency
CONNECTIONS WITH OTHERS		36
	Access to amenities (shops, cafés, library)	13
	Cycleways	6
	Community events (e.g., markets, music)	5
	Playgrounds	5
	Access to outdoor activities	4
	Community spirit and connectedness	3
NETWORKS & CONNECTIVITY		11
	Access to transport connections	6
	Trains	5
RIVER/OCEAN HEALTH		9
	Access to beach	9
EDUCATION & TRAINING		3
	Schools	3
WATER		3
	Water rates/meters	3
COMMUNITY PARTNERSHIP		3
	Concern that nothing is working well	3
HOUSING		2
	Affordable housing	2
INCOME & WORK		2
	Employment opportunities	2
PEACE & SAFETY		1
	Sense of safety	1

Table 2: What is working well in Paraparaumu?

4.3 How can things be improved in Paraparaumu?

Respondents were asked how things can be improved in Paraparaumu. Table 3 details ideas for improvement by the Paraparaumu community.

Overview of responses

Networks & connectivity — Respondents mentioned various aspects related to networks and connections. Improving road infrastructure was a common concern, including improving road surfaces, reducing traffic lights, and adding roundabouts. Additionally, there are calls for the expansion of the cycle network, the utilisation of the Airport and an increase in new public toilet facilities.

Income & work — Some respondents mention the need for more tourist options at Paraparaumu Beach, such as fishing and boats, shops, cafés, and water slides, to attract visitors and bring money into the area. They also express a desire to improve the Coastlands Mall and add popular stores like Chemist Warehouse, Bunnings, and Kmart.

Connections with others — Respondents express the need for more recreational activities and amenities for young adults and children. In contrast, others mention the importance of cultural and historical storytelling in the community.

Housing | Land use & quality — Respondents express various opinions and concerns about housing, land use and quality. Some emphasise the need to prevent high-density housing, advocating for restrictions on the number of units per site and street. Others mention the importance of medium-density, more social, and accessible housing for the aging population. There are also suggestions to prioritise gardens and outdoor spaces when building new homes. Concerns about urban intensification, traffic congestion, and lack of town planning are also raised, with calls for better-quality townhouse development.

Theme	Subtheme	Frequency
NETWORKS & CONNECTIVITY		24
	Improve traffic management	9
	Improve roads	7
	Focus on core infrastructure	5
	Improve cycleways	3
INCOME & WORK		22
	Enhance existing businesses	9
	Concern town centres are not appealing	5
	Retail/hospitality expansion (e.g., new shops)	4
	Support tourism	4
CONNECTIONS WITH OTHERS		17

Theme	Subtheme	Frequency
	Development of youth-focused activities/facilities	7
	Support for community sports/outdoor activities	7
	Enhancements to parks (i.e., water fountains)	3
HOUSING		12
	Concern regarding high density housing	12
LAND USE & QUALITY		11
	Concern regarding high density housing	11
HEALTH		9
	Improve hospital services	5
	Improve access to GP services	4
COMMUNITY PARTNERSHIP		7
	Focus on core services	7
RIVER/OCEAN HEALTH		4
	Better access to the beach	4
EDUCATION & TRAINING		2
	New schools/education facilities	2
PEACE & SAFETY		2
	Crime prevention (e.g., neighbourhood watch)	2
BIODIVERSITY		2
	Tree planting	2

Table 3: How can things be improved in Paraparaumu?

Selected quotes

“We need a hospital & more doctors for starters. The road towards the mall is not working at all, too much congestion. The mall needs to be updated & we need a bigger variety of shops, e.g. Kmart, Chemist Warehouse & Bunnings. If you want to attract younger generation, you need to upgrade and provide better shopping experience. Communications to the wider Paraparaumu community when planning to a bunch of two storey units in between a quiet neighbourhood. Work close with police to get on top of petty crime that is going on at the moment. Be open and share how our money are being spent and spent it wisely.”

How can things be improved in Paraparaumu?

“More use of the Airport. More hotels for visiting people. A hub for people heading out to the Island. More doctors are needed. We need the infrastructure to support the population growth.”

How can things be improved in Paraparaumu?

“Better public transport to Wellington, more reliable and frequent. Trains too packed. Shopping precincts improved and modernised.”

How can things be improved in Paraparaumu?

4.4 What is your vision for Paraparaumu?

Respondents were asked what their vision was for Paraparaumu.

Theme	Subtheme	Frequency
CONNECTIONS WITH OTHERS		55
	Thriving connected community/supportive of others	18
	Create and maintain inclusive spaces	8
	More cultural events/activities/promotion	7
	More recreational areas for various age groups	6
	Improve parking	5
	Development of youth-focused activities/facilities	4
	Support for community sports/outdoor activities	4
	New/improved Waikanae library	3
INCOME & WORK		29
	Encourage investment in local shopping and dining	9
	Enhance tourism industry/new branding	6
	Promote employment/jobs	6
	Support for local businesses/groups	5
	Strengthen community input/decision making	3
PEACE & SAFETY		26
	Improve safety	14
	Maintain the lifestyle	9
	Increase police presence	3
NETWORKS & CONNECTIVITY		19

Theme	Subtheme	Frequency
	Extend and maintain footpaths	6
	Improve traffic management for increased cars	5
	Extend and maintain cycleways	4
	Extend public transport network	4
BIODIVERSITY		16
	Protect beaches/waterways and green Kāpiti	16
LAND USE & QUALITY		14
	Concern regarding high density housing	5
	Implement low density housing	3
	Planning strategic growth	3
	Protect the airport	3
HOUSING		10
	Concern regarding high density housing	4
	Climate adaption strategies	3
	Implement low density housing	3
HEALTH		5
	Establishment of local healthcare facilities	2
	Improve access to hospital services	2
	Improve access to GP services	1
PARTNERSHIP		4
	Focus on core Council functions	4
CLIMATE & CHANGE		3
	Climate adaption strategies	3
EDUCATION & TRAINING		1
	New school/s	1

Table 4: What is your vision for Paraparaumu? details responses from the community.

Overview of responses

Connections with others — Respondents want Paraparaumu to maintain its close-knit town feel, with more teenage opportunities. They also desire a thriving community with recreational activities for both young and old. Additionally, they envision a safe and connected place, welcoming to families and visitors.

Income & work — Respondents highlight the importance of maintaining businesses and job opportunities, providing more shops and jobs for young teens. Additionally, there is a desire for a sustainable and thriving community, with vibrant cafés and hotels to make the area a bustling tourist destination.

Peace & safety — Respondents express concerns about the impact of Kāinga Ora housing plans on the community, including fears of increased crime rates, overcrowding, and the need for more infrastructure, such as a larger police station. They emphasise the importance of maintaining a safe, clean, and welcoming family environment. The desire for a peaceful and relaxed atmosphere is highlighted.

Biodiversity — Respondents express the need for a greener, more beautiful, and more diverse environment, emphasising protecting and nurturing existing trees, increasing biodiversity, and enhancing the overall beauty of the area. Respondents also raise concerns about the loss of dunes and nesting areas for birds and urge action to protect these valuable natural features.

Networks & connectivity — Respondents mention a desire for improvements in infrastructure, such as more cycle lanes, roading and stormwater infrastructure, and better footpaths. They also mention the need for better parking and less road works.

Land use & quality — Respondents emphasise the importance of preserving the unique qualities of the area, including wetlands and open spaces, while improving infrastructure and amenities. There is a desire a variety of housing options, better transport options, and facilities for recreation and entertainment. Additionally, there are suggestions for leveraging the Airport as a catalyst for economic growth and job opportunities.

Theme	Subtheme	Frequency
CONNECTIONS WITH OTHERS		55
	Thriving connected community/supportive of others	18
	Create and maintain inclusive spaces	8
	More cultural events/activities/promotion	7
	More recreational areas for various age groups	6
	Improve parking	5
	Development of youth-focused activities/facilities	4
	Support for community sports/outdoor activities	4
	New/improved Waikanae library	3
INCOME & WORK		29
	Encourage investment in local shopping and dining	9
	Enhance tourism industry/new branding	6
	Promote employment/jobs	6
	Support for local businesses/groups	5
	Strengthen community input/decision making	3
PEACE & SAFETY		26
	Improve safety	14
	Maintain the lifestyle	9
	Increase police presence	3
NETWORKS & CONNECTIVITY		19
	Extend and maintain footpaths	6

Theme	Subtheme	Frequency
	Improve traffic management for increased cars	5
	Extend and maintain cycleways	4
	Extend public transport network	4
BIODIVERSITY		16
	Protect beaches/waterways and green Kāpiti	16
LAND USE & QUALITY		14
	Concern regarding high density housing	5
	Implement low density housing	3
	Planning strategic growth	3
	Protect the airport	3
HOUSING		10
	Concern regarding high density housing	4
	Climate adaption strategies	3
	Implement low density housing	3
HEALTH		5
	Establishment of local healthcare facilities	2
	Improve access to hospital services	2
	Improve access to GP services	1
PARTNERSHIP		4
	Focus on core Council functions	4
CLIMATE & CHANGE		3
	Climate adaption strategies	3
EDUCATION & TRAINING		1
	New school/s	1

Table 4: What is your vision for Paraparaumu?

Selected quotes

“A thriving beachside haven for residents and visitors.”

What is your vision for Paraparaumu?

“A thriving community active community for old and young. On weekends I want to stay in our town, not having to drive to Porirua for shopping. This is my happy place - I want to spent every minute of my weekend here and not half of it having to drive somewhere.”

What is your vision for Paraparaumu?

Phase Two: Testing what we have heard so far

5 Vision follow up survey

This section of the report summarises community feedback received as part of the Vision follow up survey. The community was provided with a summary of the feedback received from the initial engagement for reflection and refining.

5.1 Does this reflect what's important to you?

Respondents were asked whether the feedback received reflected what was important to them. Table 5 is a summary of the feedback received.

Overview of responses

Connections with others — Respondents generally agree with the feedback received from the initial survey but suggest a need for more community-oriented facilities and programmes. They mention the lack of spaces for young people to gather and be entertained, indicating a desire for better social connections among youth. The respondents also call for after-school programmes and youth career support, which would foster community engagement and mentorship. There's an emphasis on creating safe areas for community enjoyment, which could enhance social interactions and community cohesion.

Community partnership — The feedback emphasises a desire for greater community involvement in Council decision-making. Respondents suggest a new approach to project approval, including a ratepayer and business advisory group with a 60% support threshold. There are calls for more transparency in Council spending and target-setting, with concerns about rate increases and debt management. Some feel the Council isn't listening to ratepayers' wishes and want more accountability in spending and project implementation.

Health — The feedback strongly emphasises the need for improved healthcare access in Paraparaumu and the entire District, particularly highlighting the lack of local hospital and 24/7 emergency services. Residents express concerns about the high cost and difficulty of accessing emergency care in Wellington. There are calls for a local hospital, better ambulance services, and expanded healthcare infrastructure to support the growing population.

Theme	Subtheme	Frequency
CONNECTIONS WITH OTHERS		19
	General agreement without specifics	12
	Development of youth-focused activities/facilities	4
	Improve access to/upgrade public facilities	3
COMMUNITY PARTNERSHIP		12
	Concern about Council spending and debt	6
	Community involvement in decision-making	3
	Criticism of consultation process	3
HEALTH		9
	Improved access to healthcare facilities	5
	Desire for local hospital/emergency services	4
BIODIVERSITY		9
	Protection of wildlife/natural spaces/waterways	5
	Tree planting and green space preservation	4
CLIMATE & CHANGE		6
	Concern about climate change fear-mongering	3
	Focus on climate change mitigation	3
RIVER/OCEAN HEALTH		6
	Concern about coastal erosion	3
	Improvements to waste management	3
HOUSING		5
	Concern about housing regulations	2
	Concern about high-density housing	1
	Preserving character while balancing development	1
	Support for affordable/more housing	1
NETWORKS & CONNECTIVITY		5
	Improved public transport	5

Theme	Subtheme	Frequency
INCOME & WORK		5
	Desire for more diverse shopping options	2
	Support for local businesses/economy	2
	Desire for economic growth	1
WATER		4
	Concern about water quality and supply	4
LAND USE & QUALITY		4
	Concern about aesthetic of new developments	1
	Concern about urban planning	1
	Concern about urban sprawl	1
	Support for restrictions to beachfront development	1
OTHER		4
	Concern about rates increases	4
PEACE & SAFETY		3
	Maintaining safe community spaces	2
	Concern about potential increased crime	1
EDUCATION & TRAINING		1
	Support for youth workers	1
FOOD		1
	Support for food donation	1

Table 5: Does this reflect what's important to you?

Selected quotes

“I think we need more entertaining places for kids to go to. Like a big event centre with an arcade laser tag. paintball., bowling, fun place. All our fun places have been taken away for housing but what’s the point in more housing when there’s nothing fun to do. Our Coastlands Mall needs more teen shops like Glassons, Cotton On and Mecca. It’s not appealing to teens and kids anymore. Make Kapiti teen/kid fun and friendly.”

Does this reflect what's important to you?

"Yes, I agree with most of the points made in the summary of responses. I'm in favour of providing good alternatives to car use, like better walking and cycling connections, rather than needing to expand roading or increase speed limits. The walking and cycling path beside the expressway is a great asset and very popular - it's a pity central government has now taken such an anti-cycleway position, but the Council can still work on providing better connections complementing this arterial cycleway to make cycling and walking more safe and convenient. For example, how about considering how walkers and cyclists can access the Nikau Reserve lookout? The access is pretty terrible, both unsafe feeling and ugly, if you aren't in a car."

Does this reflect what's important to you?

5.2 Is there anything missing?

Respondents were asked whether there is anything missing. Table 6 provides an overview of what respondents feel is missing or wished to emphasise.

Overview of responses

Connections with others — The feedback highlights a need for diverse recreational facilities and activities, especially for youth and families. Suggestions include indoor sports centres, an indoor skating rink, event centres with diverse activities, and improved parks. Accessibility concerns are prominent, with calls for better mobility access on paths and public transport. There's a desire for more community spaces for various age groups. Fenced dog areas are requested. Overall, residents want more options to connect and engage within the community.

Networks & connectivity — The feedback highlights concerns about road safety and infrastructure, with calls for improved road conditions, better parking, and traffic management. There's a strong emphasis on enhancing public transport, including more frequent and accessible bus services. Residents want better cycleways, walkways and bridleways with attention given to accessibility for mobility scooters. Road safety issues, such as speeding e-bikes and dangerous crossings, are also mentioned. There are also requests for more parking, especially near shopping areas and beaches.

Biodiversity — The feedback emphasises the importance of green spaces and environmental conservation. Residents call for more parks and gardens, especially near high-density housing, recognising their value for mental health and community well-being. There's concern about tree removal and a desire for a comprehensive tree policy. The community wants to protect natural habitats, including beaches and seabird nesting sites, with suggestions for better enforcement of beach access rules and dog control in sensitive areas.

Theme	Subtheme	Frequency
CONNECTIONS WITH OTHERS		37
	Indoor sports and recreational facilities	10
	Accessibility improvements for disabled and elderly	7
	Activities and attractions needed	5
	Cultural and arts facilities and events	5
	Fenced in dog parks needed	5
	Youth-focused activities and facilities	5
NETWORKS & CONNECTIVITY		33
	Improve road safety and use with increased cars	9
	Enhanced public transport services	7
	Improved road infrastructure and connectivity	5
	Extend cycleways/walkways	4
	Improved waste management and recycling	4
	Increase parking lots	4
BIODIVERSITY		13
	More green spaces and parks	7
	Focus on environmental conservation	6
HOUSING		11
	Maintain affordable rates	6
	Increased housing density and options	5
COMMUNITY PARTNERSHIP		10
	Concern about Council spending and rates increases	5
	Focus on core Council services	5
CLIMATE & CHANGE		10
	Focus on climate change mitigation and adaptation	6
	Sustainable energy initiatives	4
FOOD		7
	Encourage investment in local shopping and dining	7

Theme	Subtheme	Frequency
RIVER/OCEAN HEALTH		4
	Maintain stormwater and wastewater systems	4
INCOME & WORK		3
	Tourism development initiatives	3
PEACE & SAFETY		3
	Enhanced community safety measures	3
LAND USE & QUALITY		3
	Preservation of local character and heritage	2
	Concerns about urban development impacts	1
HEALTH		2
	Improved healthcare facilities and services	2
WATER		2
	Improved water management and quality	2
EDUCATION & TRAINING		1
	New schools/childhood centres	1
OTHER		1
	Suggestions for specific local projects	1

Table 6: Is there anything missing?

Selected quotes

"Because Kāpiti is developing at quite a fast rate and the influx of new families to our region, I feel that the shopping area is growing fast. There is a need to accommodate an area for more parking and easy access to the shopping area to accommodate more people to a high standard of safety thus making shopping in the Centre a great experience for all."

Is there anything missing?

"I work with families and one of the things they find hardest is finding things to do with their children, especially if the weather is bad - so things such as the library are really important, but it would be great if we could foster more family friendly and budget friendly opportunities. With all the research showing the value of green space to mental health, I think it is vital for community wellbeing to have green spaces within walking distance of high intensity housing. I also think that we need to be planning for alternative green and recreation spaces when sea level rise may mean the beach is less and less accessible."

Is there anything missing?

"Local rules for new housing to have solar panels on N/NW facing roofs, and pale colours for walls and roofs up to 12C cooling of urban area [along with occasional trees]. Think about it: the Rates rise of nearly 20%, with threat of 7% of the accumulating total for the next 10 years. !!!"

Is there anything missing?

Broader community engagement

In addition to the targeted Vision Paraparaumu surveys, valuable insights were gathered from other community engagement processes that took place in Paraparaumu. These broader engagements provide important context and additional perspectives on the community's priorities and concerns.

This section summarises key findings from two significant engagement efforts:

1. The Long Term Plan 2024-34 consultation process, which yielded insights on economic development, infrastructure needs, financial management, community facilities, environmental protection, housing, and governance transparency.
2. A Needs Assessment focused on young people in Kāpiti, conducted through Zeal Paraparaumu, which provided crucial insights into the experiences, challenges and aspirations of local youth.

The feedback from these engagements complements and enhances our understanding of the Paraparaumu community's vision for the future, highlighting areas of alignment as well as additional considerations that may need to be incorporated into planning efforts.

6 Relevant Insights from the Long Term Plan Process

The Long Term Plan 2024-34 consultation process gathered valuable community feedback on future development. This engagement captured a range of views on issues affecting the area's growth and community well-being.

Feedback covered topics including economic development, infrastructure needs, environmental concerns, and community services. These insights reflect community priorities and will help inform planning for the future.

The following subsections summarise key themes from the consultation, providing an overview of community perspectives on development over the coming years.

6.1 Economic Development

Kāpiti Airport development — Submissions emphasised the potential of developing Kāpiti Airport into a multi-use precinct with aviation, housing, technology businesses, and commercial activities to boost economic and employment opportunities.

Business engagement — The Kāpiti Coast Chamber of Commerce urged more engagement with the business community on economic development activities.

6.2 Infrastructure & Asset Management

Water infrastructure — Calls for improved infrastructure, particularly in water management, stormwater systems, and flood protection.

Equitable funding — Respondents advocated for a more equitable approach to funding infrastructure projects.

Planning and maintenance — Emphasis on better planning and maintenance of existing infrastructure.

Financial Management & Rates

Rates increase concerns — Significant worry about the proposed 17% rates increase for 2024/25, with Paraparaumu respondents among the least supportive of rates funding options.

Affordability — Strong emphasis on maintaining affordability for ratepayers, particularly those on fixed or low incomes.

Cost Savings — Calls for the Council to find cost savings and prioritise core services.

6.3 Community Facilities & Services

Support for local facilities such as mental health support, youth engagement programmes, sports and recreation facilities, and community halls. Emphasis on these services as crucial for fostering a strong and inclusive community.

6.4 Environmental Protection & Climate Change

Balanced approach — Calls for a balanced approach to addressing climate change risks while considering financial implications for ratepayers.

Climate action rate — A proposal to introduce a new climate action rate based on capital value, with Paraparaumu respondents slightly more inclined to prefer no change to the status quo.

Housing & Land Use

Council housing — Options presented for managing Council housing for older people, including transferring to a new or existing community housing provider.

Urban development — Some submissions called for rezoning land for urban development, which could impact future growth patterns in Paraparaumu.

6.5 Transparency & Consultation

Improved Process — Criticisms of the council's consultation process and decision-making, with calls for greater transparency and improved communication.

Community Engagement — Requests for more meaningful engagement with the community in planning processes.

Data Usage — Some respondents questioned the use of data and expert advice in planning processes.

These insights from the LTP process provide valuable information for future planning in Paraparaumu, highlighting the need to balance economic development, infrastructure improvements, environmental concerns, and community wellbeing while addressing issues of affordability and transparency in governance.

7 Needs Assessment: Insights from Kāpiti young people (ZEAL)

This section of the report presents a summary of the key insights gathered from the Needs Assessment: Insights from Kāpiti young people. The assessment focused on young people who are or have been involved in Zeal's core programmes, such as afternoon hangs, creative programmes, events, and college representatives. It sought to understand the experiences, challenges and suggestions of young people from Paraparaumu, as well as the impact of Zeal on participants and its ability to address their concerns.

The Needs Assessment: Insights from Kāpiti young people survey collected data through two methods:

- Annual survey: Conducted over 12 months, with 74 participants.
- Follow-up survey: Completed by 20 respondents.

The combined efforts yielded feedback from 94 youth involved in Zeal's programmes, aiming to understand their experiences, challenges, and needs. This survey was conducted by Zeal as part of requirements of its contract with Kāpiti Coast District Council. While other feedback did not reflect Zeal as strongly, there remained a theme of the importance of facilities for youth in Kāpiti.

The feedback provided indicated that Zeal Paraparaumu is highly valued by young people as a social hub and safe space. It's seen as superior to the Mall for connecting with friends and offers constant engagement through activities like cards and pool. The venue played a crucial role in helping youth re-socialise after COVID-19 lockdowns. It provides a safe alternative when young people don't want to go home. Youth report learning from conversations with the friendly staff. Overall, Zeal Paraparaumu serves as a welcoming, engaging, and supportive environment for local youth.

Through the survey youth in Paraparaumu have expressed several key desires for their future, these include:

- **Better information:** More accessible information about services and events, possibly through a large notice board.
- **Expanded support:** Utilising Zeal staff for broader support needs, as they are perceived as more approachable than formal services like KYS.
- **Creative opportunities:** More creative challenges and activities.
- **Improved art space:** Making the art space more accessible and balancing noise levels.
- **Engaging activities:** Continuing and expanding activities like pool competitions and table tennis, with an opt-in/opt-out system.

- **Image improvement:** Addressing negative stigmas about Zeal to attract more youth.
- **Increased space:** More room for various activities.
- **Diverse courses:** Offering additional courses in areas like hairdressing, makeup, and building.
- **Staffing:** More staff during hangs to assist new attendees.
- **Better referral information:** Improved information about other youth services.
- **Outreach:** Expanding awareness about Zeal to reach more youth who could benefit.
- **Exterior appearance:** Modifying the building's appearance to look more like a youth centre.

Produced by PublicVoice Limited

Suite 2, 5 Bouverie Street

Petone

Lower Hutt, 5012

Ph: (04) 909 7463

Email: info@publicvoice.co.nz

The views expressed in this report are those of the author(s) and do not necessarily reflect the position of the Kāpiti Coast District Council. The Kāpiti Coast District Council does not accept any liability for claims arising from the reports content or reliance on it.