



Vision Waikanae

Summary Report
November, 2024

About PublicVoice

PublicVoice Limited is a leading research and engagement consultancy headquartered in Wellington, New Zealand. We concentrate on public policy research and consultation, providing services to various local and central government agencies throughout New Zealand. To learn more about our work, please visit www.publicvoice.co.nz.

Version:	V1.0
Date:	5 August 2024
Author(s):	Jared Bothwell

Contents

Contents	1
1 Executive summary	2
1.1 Why Vision Kāpiti 2060?	2
1.2 Overview of Vision Waikanae engagement and feedback	2
1.3 Central Themes.....	6
2 A summary of all feedback on Vision Waikanae	8
2.1 Place.....	9
2.2 People	18
2.3 Partnership.....	33
2.4 Comparison of Vision Waikanae and Vision follow up survey results.....	35
3 Data analysis methodology	37
3.1 Survey data analysis.....	37
3.2 Key findings analysis	37
3.3 Reporting.....	37
Phase One: Gathering initial views	38
4 Vision Waikanae survey	38
4.1 What part of the wider Waikanae area do you live in or associate with?....	38
4.2 What are the features of Waikanae you like, that make it unique?	39
4.3 What could be improved to help support the community now and into the future?.....	42
Phase Two: Testing what we have heard so far	47
5 Vision follow up survey	47
5.1 Does this reflect what's important to you?	47
5.2 Is there anything missing?	50
Broader community engagement	52
6 Relevant Insights from the Long-Term Plan Process	53
6.1 Rates and Affordability.....	53
6.2 Infrastructure & Flood Management.....	53
6.3 Community Facilities.....	53
6.4 Housing	53
6.5 Urban Development & Growth.....	54
6.6 Transportation	54
6.7 Environmental Concerns	54
6.8 Community Engagement	54
7 Friends of Te Horo Beach: Participatory Mapping Activity	55
8 Waikanae Library	56
8.1 Current Use	56
8.2 What is your preferred option for location of the new library?	57
8.3 Most important aspects for Council to consider	59
8.4 Project Objectives	59
8.5 Other Comments.....	61

1 Executive summary

1.1 Why Vision Kāpiti 2060?

A clear district-wide vision will help guide planning, decision making, programmes, services, and advocacy, for decades to come.

Elected members want to hear from their communities about what matters most, what change people want to see, and their aspirations for the future of our District.

The first stage is to develop a Vision for the District and its underlying communities.

Two further stages will follow this:

- Identifying and testing pathways and priorities for achieving our Vision; and, finally
- Developing a blueprint for action, mapping out our key steps and moves to realise our Vision.

Once complete, the Vision and blueprint will outline what things will be prioritised over the next 30 years (to 2060), and how Council will work with its iwi partners, central and local government, and key stakeholders to achieve our collective Vision.

This process will replace the Local Outcomes Statements developed across the District from 2007 - 2017.

1.2 Overview of Vision Waikanae engagement and feedback

The Community Board has worked to capture feedback from the Waikanae community to help shape and refine Vision Waikanae. This has occurred across two phases of engagement.

Phase One: Gathering initial views

From August to December 2023 feedback was captured from local Waikanae residents through:

- An online survey identifying the local areas people associate with, what makes Waikanae unique, and current and future improvements needed. 189 responses with 349 feedback points
- Feedback at the Waikanae Engagement Hub as part of 410 feedback points of Vision Kāpiti.

This feedback was summarised and presented to local communities for further testing as part of Phase Two. This included a detailed report which summarised feedback from all sources, and feedback received on local survey questions.

Phase Two: Testing what we have heard so far

From April to July 2024 the summary of feedback from Phase One was shared to test whether what had been captured so far reflected what was important and if there was anything missing.

Further feedback was captured from engagement during this period including:

- An online survey asking if what is captured so far reflects what's important and if there is anything missing. 60 contributors' responses with 218 feedback points
- Feedback from the Engagement Hub at Waikanae library and two drop-in sessions on 21 May 2024 and 18 June 2024. 20 contributors' responses with 44 feedback points

Broader community engagement

In addition to the above engagements, the Community Board has sought to engage and seek feedback with local residents through a number of other ways including:

- Train station flyer drop and discussion with commuters
- Posters at local businesses
- Facebook messaging
- Discussions with special interest groups such as Waikanae Lions, Waikanae Tennis club, Friends of Te Horo Beach, Waikanae Residents Society.

Other community feedback included

In addition to feedback on the Vision process, several recent community engagements have provided feedback on what's missing or important for the Waikanae area. By incorporating these supplementary sources, we gain a more comprehensive understanding of community priorities and concerns. This multi-faceted approach allows us to identify recurring themes across different engagement processes, providing a robust foundation for the future. This includes:

- Long Term Plan 2024-2034 feedback Key insights identified from the full set of feedback (371 responses with 1,598 feedback points)
- Friends of Te Horo Beach: Participatory Mapping Activity feedback Key insights from 18 responses
- Engagement on the Waikanae Library project Key insights from 1,997 responses with 4,784 feedback points

The inclusion of Long Term Plan insights offers valuable context on infrastructure priorities, financial considerations, and community initiatives. The Friends of Te Horo Beach Mapping Activity provides crucial perspectives on environmental priorities and community assets. Meanwhile, the Waikanae Library consultation feedback

highlights the importance of community spaces and amenities. Together, these additional sources enrich and validate the themes identified in the primary Vision Waikanae engagement, ensuring a holistic view of community aspirations.

This report

This report provides an overview of all feedback shaping Vision Waikanae. This includes:

- Consolidated findings from all feedback.
- A summary of the Phase One local survey results.
- A summary of Phase Two feedback on what's important and gaps.
- A summary of what we heard from additional information sources, including:
 - Long Term Plan 2024-34 consultation, which covered topics such as rates affordability, infrastructure priorities, housing, transportation, and community facilities.
 - Friends of Te Horo Beach Participatory Mapping Activity, which identified significant natural features, community assets, and environmental priorities.
 - Waikanae Library consultation, which gathered feedback on the library's current use, location preferences, project objectives, and community needs for the new facility.

The engagement data analysis has been structured using the Council's Doughnut Economic Framework. This model provides a holistic view of the community's well-being, considering social, cultural, environmental, and economic factors. The key findings are organised into themes that align with the various dimensions of the Doughnut Framework.

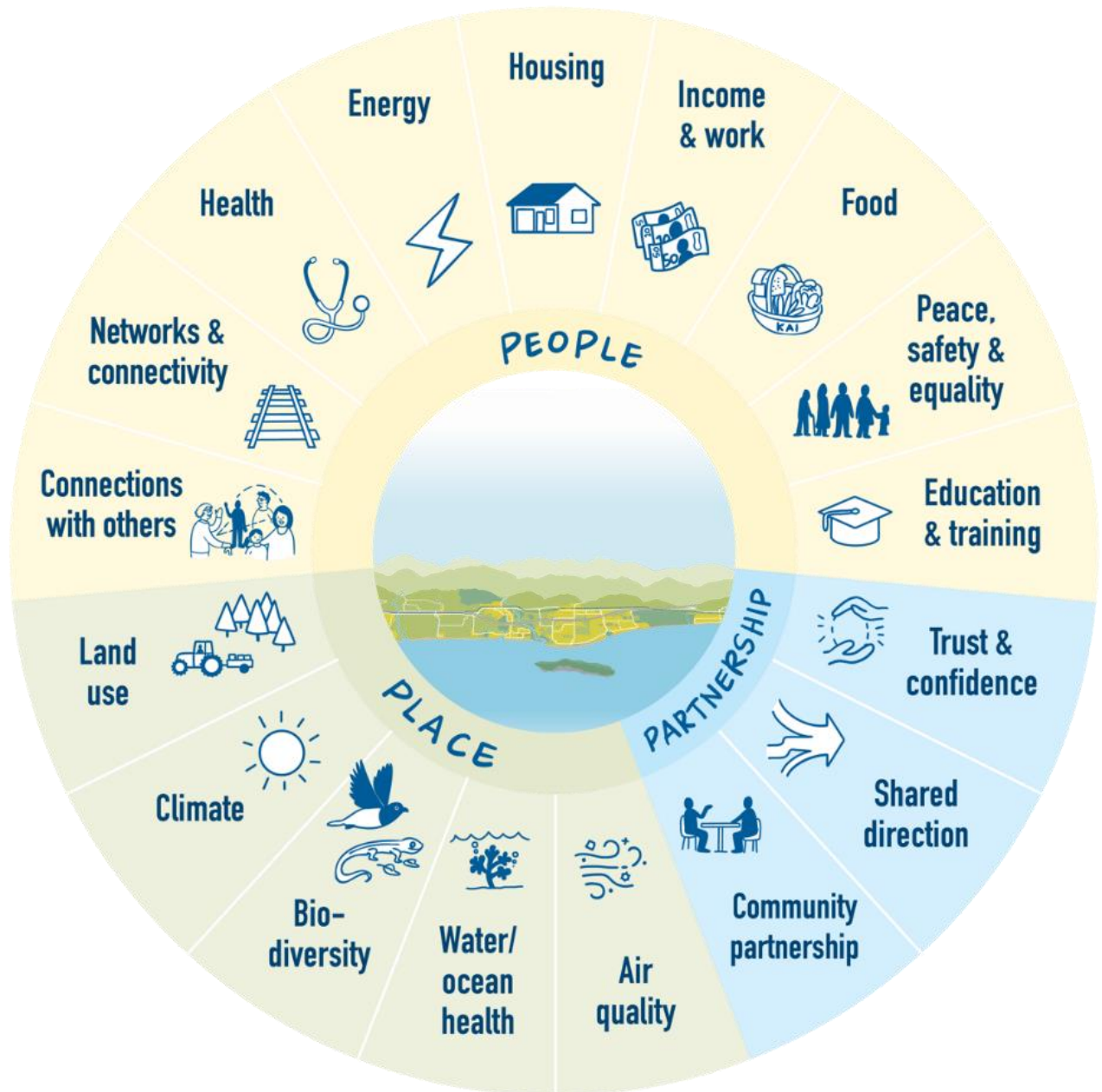


Figure 1: The Doughnut Economic Framework

1.3 Central Themes

This section summarises the key findings that emerged from the community engagement process. It highlights the dominant priorities and aspirations expressed by the residents of Waikanae across various domains of the economic doughnut model.



Āhurangi | Climate: The community prioritises environmental stewardship, focusing on climate change adaptation, waste management, and preserving the local climate. There are concerns about the costs of climate adaptation planning and potential fearmongering, balanced with calls for mitigation efforts and sustainable practices.



Aiowhaitika mō te tangata | Peace & Safety: Residents value the area's peaceful atmosphere and safety, with suggestions for improved animal control and increased police presence. There's a desire to maintain the safe, low-crime community feel while addressing emerging safety concerns.



Te hononga ki ētahi atu | Connections with others: The community emphasises the need for inclusive public spaces, upgraded amenities, and a new community hall to foster a sense of belonging and support diverse needs. There's a strong call for youth-focused activities and facilities for different age groups.



Hanga Whare | Housing: Key priorities include balancing urban intensification with character preservation, improving housing affordability, and developing infrastructure for new housing areas. There's a mix of support for and concern about high-density housing.



Hauora | Health: The community seeks better access to healthcare services, including hospitals, GPs, and home support, along with integrating health into everyday environments. There's a strong desire for local medical facilities and improved emergency services.



Hauora Awa/Moana | River/Ocean Health: Residents appreciate the proximity to rivers, beaches, and the ocean, highlighting the importance of protecting these natural assets. There are concerns about water quality, erosion, and the need for better management of these resources.



He Waka eke noa/A Shared Waka | Community Partnership: The community desires effective local governance, improved communication, and the incorporation of the Waikanae Futures Document into decision-making. There are concerns about Council spending, rates increases, and the consultation process.



Kai | Food: Residents enjoy the variety of cafés and restaurants in Waikanae and call for more diverse dining options. There's also interest in supporting local food production and businesses.



Konorau Koiora | Biodiversity: The community values the area's rich biodiversity and actively engages in preserving and enhancing natural spaces. There's a focus on environmental conservation, pest control, and increasing green spaces.



Mātauranga | Education & Training: Expanding educational opportunities and facilities, such as new schools and diverse learning programmes, is a priority for the growing community. There's support for new primary schools and expanded educational courses.



Ngā Hono | Networks & Connectivity: Improving public transport, road safety, and accessibility for pedestrians and cyclists are key focus areas. There's also emphasis on better traffic management and infrastructure development to accommodate growth.



Ohunga | Income & Work: The community seeks to revitalise the local economy by addressing vacant properties, supporting local businesses, and promoting the region's appeal. There's a desire for more diverse shopping options and investment in local businesses.



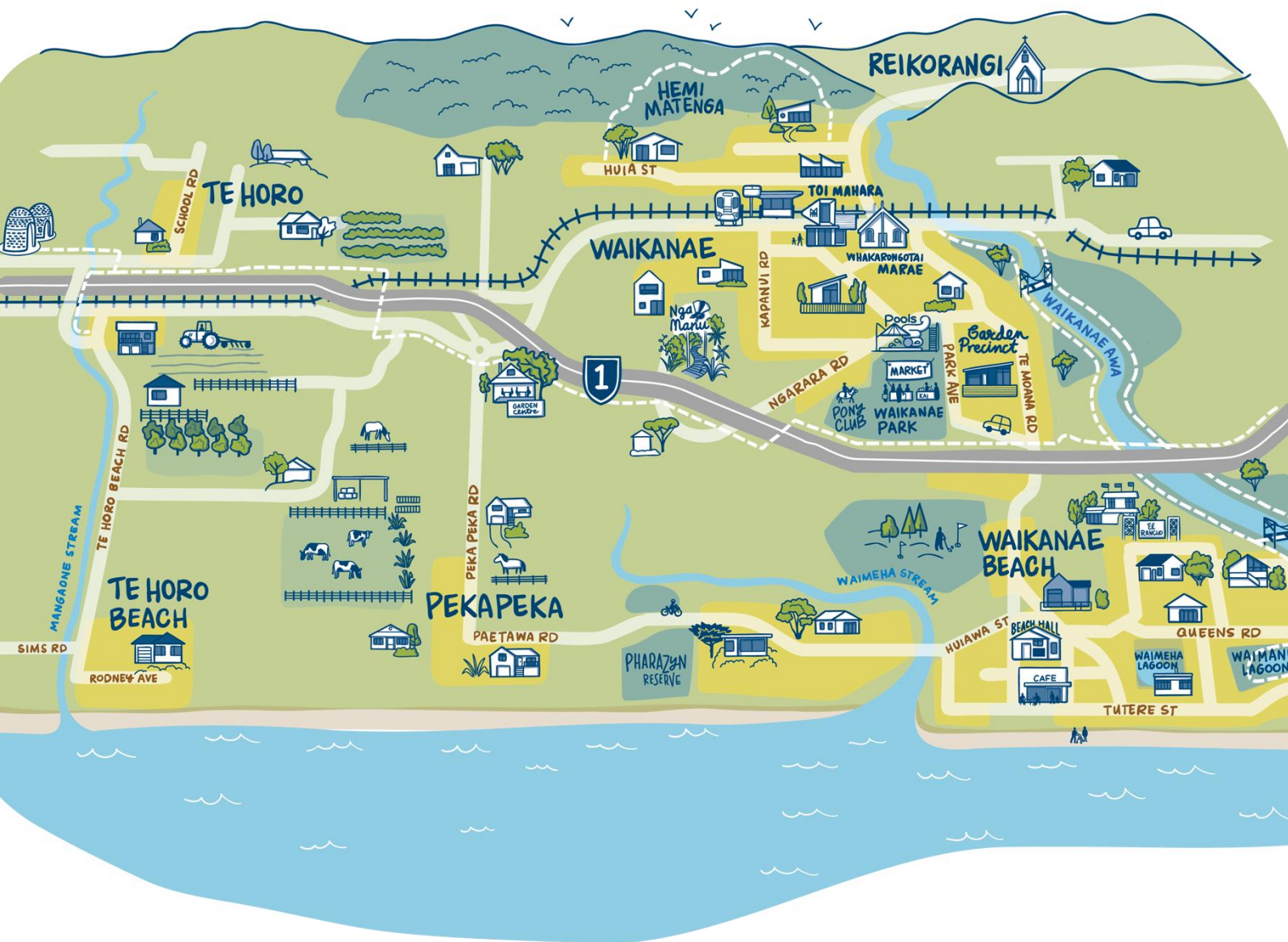
Wai | Water: Residents prioritise water quality, wastewater management, and improving water services and infrastructure. There are concerns about stormwater management and the need for better water management systems.



Whakamahi/Hauora Whenua | Land Use & Quality: Balancing urban development with environmental preservation, affordability, and sustainable growth is crucial for the community. There's a focus on maintaining the area's unique character while accommodating necessary growth.

2 A summary of all feedback on Vision Waikanae

This section provides more detail on views for areas of the Doughnut Framework, representing key needs for the community. In this section, the most common topics that emerged from the community feedback are highlighted for each theme, along with supporting quotes or discussion points. These insights shed light on the Waikanae community's values, priorities, and concerns, offering valuable guidance for the Council's decision-making processes and future planning efforts.



2.1 Place

Below is the summary of key findings related to 'Place'.



Āhurangi | Climate feedback highlighted concerns about the costs associated with climate adaptation planning, as well as worries about potential climate change fearmongering. However, there was also a clear focus on the importance of climate change mitigation and adaptation efforts, including enhancing emergency preparedness and investing in sustainable energy initiatives. Residents expressed a desire to see efficient waste management and recycling systems implemented as part of a comprehensive approach to addressing climate change challenges. Overall, the feedback indicated a recognition of the need to tackle climate change through a balanced, solution-oriented strategy that considers both mitigation and adaptation measures, while also addressing community concerns about the potential financial and psychological impacts.

The most common themes that emerged from community feedback were:

Efficient waste management & recycling systems

The feedback indicates that Waikanae residents are concerned about the lack of adequate waste management and recycling facilities in the area. Several comments highlight the need for better coordinated rubbish and recycling services, including the reinstatement of the Waikanae recycling station that was recently closed. Residents express frustration at having multiple private contractors providing these services, which is seen as confusing and inefficient. There are

also calls for more hours of access to recycling facilities. Overall, the feedback suggests that improving the reliability, accessibility and sustainability of waste and recycling systems is a high priority for the Waikanae community, in order to support the area's environmental goals and quality of life for residents.

Climate change concern

The feedback indicates a significant degree of concern among Waikanae residents about the impacts of climate change and the need for Council to take proactive measures in mitigation and adaptation. Residents emphasize the importance of ensuring infrastructure like stormwater management systems, wastewater treatment, and coastal protection are designed to be resilient in the face of sea level rise, flooding, and other climate-related threats. There are calls for the Council to halt development in areas vulnerable to these impacts, and to prioritise nature-based solutions like wetland restoration over hard infrastructure. Residents express a desire for the Council to adopt a more holistic, community-focused approach to climate adaptation, engaging with local knowledge and expertise. Overall, the feedback reflects a strong awareness of the climate emergency and a willingness within the Waikanae community to support bold, forward-thinking actions to protect the area's environment and the wellbeing of residents.

Other key themes included:



- Sustainable energy initiatives.

Enjoy the local climate & weather

The feedback highlights Waikanae residents' appreciation for the local climate and natural environment. Many comments praise the area's warm, sunny weather, stunning coastal scenery, and proximity to beaches, lakes, and recreational spaces. Residents describe Waikanae as having a rewarding climate for gardeners, and note the community's casual, laid-back vibe enhanced by its coastal setting. Overall, the feedback underscores how Waikanae's pleasant climate and natural surroundings are seen as core assets that contribute greatly to the community's quality of life and appeal.





Hauora Awa/Moana River/Ocean Health

Hauora Awa/Moana | River/Ocean Health related feedback highlighted concerns about local water management, emphasising the need to improve water quality in the Waikanae Lagoon and address issues like incomplete stop banks and stormwater system shortcomings. Residents also expressed worries about the accretion of the Waikanae River and called for increased consultation around the development and protection of beaches and rivers. At the same time, the feedback underscored the community's deep appreciation for their proximity to the ocean, sea, local waterways and beaches, which they viewed as valuable natural assets. Overall, the input pointed to the importance of effective, sustainable water and environmental management that preserves the local area's cherished coastal and riverine attributes.

The most common themes that emerged from community feedback were:

Proximity to rivers

Feedback highlights Waikanae residents' appreciation for their proximity to the area's rivers and waterways, particularly the Waikanae River. Residents describe the river and its associated trails, reserves, and wetlands as key assets that contribute to the community's quality of life and natural character. The ability to easily access and enjoy these environments for activities like walking, cycling, bird watching, and fishing is widely valued. Concerns are raised about ensuring the long-term health and accessibility of the river system, with calls for measures to address issues like erosion, sedimentation, and ecological restoration. Residents also see the river as an important connector, linking the coastal areas to the inland hills and providing a sense of the broader natural environment that surrounds Waikanae. Overall, the feedback underscores how the proximity to the

Waikanae River and associated waterways are a defining feature of the community, shaping its identity, recreational opportunities, and connection to the local landscape.



Concern about accretion of the Waikanae River

The feedback expresses significant concerns among Waikanae residents about the accretion, or buildup of sediment, in the lower Waikanae River. This issue is seen as posing a serious flood risk, particularly in the event of major storm events like Cyclone Gabrielle. Residents note that the accumulation of gravel in the River's lower reaches have the potential to exacerbate the impacts of flooding, threatening homes, infrastructure, and the broader coastal environment. There are calls for the regional and local councils to take urgent action to address this problem, including through regular dredging and maintenance of the river mouth. Residents feel a lack of proactive management by the authorities has allowed the accretion issue to worsen over time. Overall, the feedback underscores the community's deep worry about the flood hazards posed by the Waikanae River's changing morphology, and a desire for decisive intervention to mitigate these risks before a major disaster occurs.

Proximity to the seaside, beaches & ocean

The feedback highlights Waikanae residents' deep appreciation for their proximity to the coast, beaches, and ocean. Many comments praise the area's scenic beauty, tranquil atmosphere. Residents value the ability to enjoy natural amenities like the coastal reserves. Concerns, however, are raised about protecting these environmental assets from the impacts of development and climate change. Overall, the feedback underscores how the proximity to the ocean and coastline is a core part of local identity and appeal, contributing greatly to residents' quality of life and the distinctive character of the community.

Other key themes included:



- Concern about incomplete stop banks in Waikanae
- Improve water quality of Waikanae Lagoon.





Kanorau Koiora Biodiversity

Kanorau Koiora | Biodiversity related feedback reflected a strong environmental focus, with calls for changes to gardening practices to use more permanent plants, reductions in roadside spraying, and the reinstatement of bylaws to protect native trees. Residents also expressed a desire for increased efforts to remove non-native species and pests, protect wildlife habitats and natural spaces, and enhance tree planting and green space preservation. They valued their proximity to natural assets like Kāpiti Island, forests, wetlands, mountains, and the coast, and enjoyed visiting local parks and observing marine and freshwater birdlife. Overall, the feedback emphasised the importance of environmental conservation and the protection of beaches, waterways and green spaces for the benefit of the community.

The most common themes that emerged from community feedback were:

Proximity to nature

The feedback highlights how Waikanae residents deeply value the proximity to nature and natural environments that define their community. Descriptions of the area's scenic beauty, with its beaches, rivers, hills, and abundant wildlife, underscore how these natural assets are viewed as core to local identity and quality of life. Residents express a strong desire to preserve the semi-rural, low-density character of the region, with its walking trails, wetlands, and green spaces.

There is a sense that being surrounded by nature - whether it's the Waikanae River, Kāpiti Island, or the coastal dunes - provides a sense of peace, tranquillity, and connection to the environment that is highly prized. Overall, the feedback emphasises the vital importance of maintaining and enhancing natural character, which is seen as essential to supporting the community's wellbeing and distinctive identity.

Protect beaches & waterways & green Kāpiti

The feedback highlights residents' deep appreciation for the natural environment, particularly the beaches, waterways, and green spaces that define the area. Residents express a strong desire to preserve and protect these assets, with concerns raised about issues like dune erosion, river sedimentation, and the loss of wetlands, with calls for more proactive Council action to address these threats. Residents want to see greater efforts to maintain the health and accessibility of beaches, rivers, and natural reserves, including through measures like dredging, native planting, and traffic management. Protecting the distinctive "semi-rural" character of the area, with its low-density development and abundance of green spaces, is viewed as essential. Overall, the feedback emphasises the need to prioritise environmental stewardship and sustainability to safeguard natural treasures for current and future generations.

Other key themes included:

- Proximity to mountains and hills
- Enjoy marine and fresh-water bird life
- Concern about erosion of Waikanae dunes.

Enjoy visiting local parks & reserves

The feedback indicates that Waikanae residents highly value the area's network of parks, reserves, and natural spaces, and deeply enjoy being able to access and experience these environments. Residents praise Waikanae Park and other green areas as important community assets that support recreation, wildlife, and a sense of connection to the natural world. The ability to easily walk, cycle, or explore these spaces is seen as central to the community's quality of life. Residents express a desire to see continued investment in maintaining and enhancing these natural amenities, including through measures like improved trail systems, habitat restoration, and better management of issues like dune erosion and sedimentation. Overall, the feedback underscores how parks, reserves, and green corridors are highly valued as both community gathering spaces and gateways to the area's natural beauty and biodiversity.





Wai Water

Wai | Water related feedback highlighted the importance of improved water management and quality as a key priority. Residents expressed concerns about water-related issues, including the need to address water quality and waste. There were calls for the Council to take action to enhance water services and infrastructure in order to ensure reliable, sustainable and safe water supply for the community. Addressing these water-related challenges was seen as crucial for the wellbeing and long-term resilience of the local area.

The most common theme that emerged from community feedback was:

Address concerns around water quality & improve water services

The feedback indicates that Waikanae residents have significant concerns around drinking water quality and the need for infrastructure improvements to the water system. Specific issues raised include problems with water pressure, as well as the need to extend drinking water and wastewater services to areas like Peka Peka that currently lack this infrastructure. There are calls for the Council to prioritise upgrading and maintaining the drinking water network to ensure a reliable, high-quality supply for the community, especially as new housing developments put added pressure on the system. Residents express worries that water-related problems could negatively impact public health and the natural environment. Overall, the

feedback suggests that ensuring safe, accessible drinking water is a key priority for Waikanae residents that the Council should address through strategic planning and investment in the water infrastructure.





Whakamahi/Hauora Whenua Land Use & Quality

Whakamahi/Hauora Whenua | Land Use & Quality related feedback expressed a desire to see development in the area balanced with the preservation of local character and heritage. Residents highlighted the importance of adhering to the Waikanae Beach Futures document and addressing concerns about the negative impacts of urban development on the area's unique identity. While some supported measures to promote intensification and reduce urban sprawl, there were also calls to maintain low-rise buildings and preserve the location's natural charm, including its gardens and scenic qualities. The feedback emphasised the need to carefully manage infrastructure investments for new housing areas to ensure the community's character and identity are not compromised. Overall, the input reflected a community seeking to strike a thoughtful equilibrium between necessary development and protecting the distinctive attributes that residents cherish.

The most common themes that emerged from community feedback were:

Balance intensification with character preservation

The feedback reflects a strong desire among Waikanae residents to balance any future development and intensification with preserving the area's distinctive community character, particularly in the Waikanae Beach neighbourhoods. Residents emphasise the importance of maintaining the Waikanae Beach area's wide grassy berms, lack of footpaths, and protection from wind by mature trees - elements that contribute to its unique "holiday vibe." Calls are made to restrict development to low-density housing and avoid introducing elements like high-rise apartments that could compromise the area's character. Overall, the feedback highlights the community's deep commitment to retaining the small-town, semi-rural charm, and a

willingness to accommodate growth only in ways that are compatible with the area's established identity and environmental assets.



Infrastructure development for new housing areas

The feedback indicates significant concern from Waikanae residents around the impacts of new housing development on the community's infrastructure and services. There are calls for the Council to ensure that any further residential growth, including new retirement villages, is accompanied by corresponding upgrades to water, wastewater, stormwater, and transport networks. Residents express worries that without proactive infrastructure investment, additional housing could overload systems and lead to issues like water pollution, flooding, and traffic congestion. The view is that developers should not be allowed to proceed with projects until the necessary infrastructure is in place to support them sustainably. Overall, the feedback emphasises the need for the Council to take a long-term, holistic approach to managing growth in Waikanae, ensuring new development aligns with the capacity and resilience of the community's underlying systems and services.

Other key themes included:



- Reduce urban sprawl
- Enjoy and take pride in gardens.

Low rise buildings

The feedback highlights Waikanae residents' strong preference for preserving the area's low-rise, low-density built environment, particularly around Waikanae Beach. Calls are made to restrict development to single-level or low-rise dwellings and avoid introducing high-rise apartments or multi-unit complexes that could dramatically alter the landscape. Others would like to see more implementation of higher density housing and apartments. Overall, the feedback reflects a deep-seated desire to retain a small-town, semi-rural charm, with only limited, compatible forms of intensification considered acceptable.



2.2 People

Below is a summary of the key findings related to 'People'.



Aiowhaitika mō te tangata

Peace & Safety

The feedback related to Aiowhaitika mō te tangata | Peace & Safety touched on issues of crime, safety and noise control within the area. While some residents expressed concerns about crime and called for enhanced safety measures and increased police presence, others highlighted the low crime rate and relaxing, peaceful atmosphere of the local environment. Addressing noise concerns, particularly related to freedom camping, was also identified as an important priority. The feedback suggested a mixed perspective, with a desire to maintain the area's generally safe and tranquil character, while also implementing measures to address any emerging crime or public nuisance issues. Overall, the input indicated that community safety and security are important considerations, though the prevailing view was one of appreciating the safe and serene nature of the local surroundings.

The most common themes that emerged from community feedback are:

Enjoy the relaxing & peaceful atmosphere

The feedback highlights how Waikanae residents deeply value the area's relaxing, peaceful atmosphere and small-town character. Many comments describe the community as quiet, safe, and conducive to a laidback lifestyle, with a distinct "beach village" vibe, particularly in the Waikanae Beach neighbourhoods. Residents appreciate the lack of traffic, wide grassy berms, and absence of intensive development, which contribute to a sense of tranquillity and

connection to nature. The ability to easily access green spaces, the river, and coastal areas is seen as central to the community's appeal and quality of life. Overall, the feedback underscores how the peaceful, semi-rural atmosphere and village-like character are highly prized assets that residents are keen to preserve, providing a welcome respite from the stresses of urban living.

The area is safe

The feedback highlights how Waikanae residents view their community as a safe and secure place to live. Many describe the area as having a "feeling that it is a safe place to live," with quiet streets, low traffic, and a strong sense of community that contributes to a sense of safety and security. Residents appreciate being able to walk, cycle, and enjoy the natural environment without concerns about threats to personal safety. The relaxed, small-town atmosphere is seen as fostering a level of neighbourly care and mutual lookout that adds to the area's safety. Overall, the feedback underscores how Waikanae's reputation as a safe, low-crime community is a key part of its appeal and quality of life, particularly for families and those seeking a tranquil coastal lifestyle. Maintaining this is viewed as essential to preserving Waikanae's distinctive character, and improvements to safety measures to maintain this are called for by some.

Other themes included:



- Increase police presence.

Improve animal safety & control

The feedback indicates some concerns from Waikanae residents around animal-related issues and a desire for improved safety and control measures. Specific concerns include the need for better enforcement of leash laws to prevent uncontrolled dogs on beaches and in public areas, and the negative impacts of wandering cats on local wildlife. There are calls for increased signage, policing, and regulations to address these problems. Additionally, residents express a wish for the Council to take more proactive steps to manage the rabbit population, which is seen as creating hazards on cycling and walking paths. Overall, the feedback suggests a recognition that the safety and well-being of both people and local animal populations needs to be better balanced through a combination of education, enforcement, and targeted management initiatives.





Te hononga ki ētahi atu Connections with others

The feedback related to Te hononga ki ētahi atu | Connections with others highlighted a strong appreciation for the local culture, history and diversity, with a desire to preserve the town's small-scale, family-friendly character and rustic appeal. Residents valued the availability of recreational spaces, parks and green areas that cater to all ages and abilities, supporting activities like fishing, sports, and open-air events. There were calls to improve the accessibility and inclusivity of public spaces, as well as to invest in new facilities like an indoor recreation centre and an upgraded Waikanae Library. The community also expressed a fondness for the slower, more relaxed lifestyle and a sense of belonging fostered by the friendly, supportive environment. Overall, the feedback emphasised the importance of maintaining and enhancing the town's cultural, recreational and community-oriented assets to sustain its distinctive village-like character.

The most common themes that emerged from community feedback are:

Create & maintain inclusive spaces

The feedback highlights the need to create and maintain inclusive community spaces in Waikanae, with residents calling for upgrades or replacement of facilities like the Waikanae Community Hall to better serve the diverse population. Residents express a desire for more youth-oriented activities and spaces, believing this is crucial for engaging younger generations and ensuring the community remains vibrant and welcoming. Overall, the feedback emphasises the need for Waikanae to invest in flexible, accessible

community hubs that bring people together, foster social connections, and reflect the area's diverse, multigenerational character.



Upgrade public amenities, such as parks & library

The feedback indicates Waikanae residents desire upgrades and improvements to the community's public amenities, particularly the library and parks. There is a strong sentiment that the existing library is inadequate and in need of expansion and modernisation to serve as a true community hub, providing resources, programming, and gathering spaces for all ages. Additionally, there are calls to enhance local parks, playgrounds, and recreational areas to better cater to families, youth, and those seeking outdoor activities. Improving the maintenance and accessibility of these public spaces is viewed as crucial for fostering community engagement and supporting distinctive character. Overall, the feedback emphasises the need for strategic investment in upgrading the community's core public facilities and amenities to meet the evolving needs of residents.

A sense of belonging in the community

The feedback highlights the strong sense of community and belonging that Waikanae residents value about their town. Many describe the area as having a close-knit, friendly, and welcoming atmosphere, where people look out for one another. The availability of community spaces like the Waikanae Community Hall, local parks and reserves, and gathering events are seen as important contributors to this sense of unity and shared identity. Residents express a desire to preserve and enhance these elements. There is a belief that nurturing a strong community spirit and ensuring Waikanae remains an inclusive place will be crucial for retaining the town's unique character and appeal, even as it grows and evolves.



Hanga Whare Housing

The feedback related to Hanga Whare | Housing highlighted a mix of perspectives on housing in the local area. While some residents expressed concern about housing regulations, there was also support for increasing housing density and options in Waikanae, including high-density developments and building housing above shopping centres. Residents emphasised the importance of ensuring housing affordability through targeted strategies, and called for a focus on increasing the overall housing supply to address needs. There were also specific requests for more retirement homes and accessible housing to cater to the community's diverse needs. However, some voiced concerns about the potential negative impacts of high-density housing. Overall, the feedback indicated a community grappling with the balance between increasing housing availability and affordability, while preserving the local character and quality of life.

The most common themes that emerged from community feedback are:

Concern regarding high density housing

The feedback indicates significant concerns from Waikanae residents about the prospect of high-density housing development in the community, particularly in the Waikanae Beach and surrounding areas. There is a strong preference to maintain the existing low-density, village-like character, with calls to restrict new construction to single-level or low-rise buildings that are compatible with the established built environment. Residents fear that permitting multi-unit complexes or high-rise apartments could fundamentally alter the town's distinctive charm. Some express worries that allowing more intensive development could price out long-time residents and create an enclave of the privileged. Maintaining the

community's low-density character is viewed as essential to retaining its unique appeal and prevent the kind of overdevelopment seen in neighbouring communities.



Focus on increasing housing supply

The feedback indicates a range of perspectives regarding increasing housing supply. Some residents express a desire for more intensive development, including higher-density options like townhouses and low-rise apartments, particularly in the town centre and near the train station. They see this as a way to inject more vibrancy and affordability into the community. Suggestions are made to encourage alternative housing types, like "tiny homes" and accessible units for seniors, as a way to increase supply while maintaining the existing built environment.

Other themes included:



- Increase accessible housing
- Develop housing above shopping centre.





**Hauora
Health**

The feedback related to Hauora | Health emphasised a strong desire for improved healthcare services and accessibility. Residents called for better access to GP services and enhanced emergency care facilities, with some advocating for a local hospital. There was a particular focus on improving care and services for the elderly and people with disabilities. The community stressed the need for improved healthcare facilities overall, with calls to establish more local healthcare centres. Access to hospital services was highlighted as a key concern. Overall, the feedback reflected a community seeking comprehensive, locally available healthcare services that cater to all residents, with a particular emphasis on emergency care and support for vulnerable populations.

The most common themes that emerged from community feedback are:

Establish local healthcare facilities

The community feedback highlights a critical need for expanded healthcare services in Waikanae. Residents strongly advocate for a local medical centre. There's particular emphasis on improving care for the ageing population, including dementia services. The community sees local healthcare as crucial for supporting growth and reducing reliance on distant facilities. Overall, there's a clear desire for a more self-sufficient local health system.

Improved healthcare facilities & services

The community feedback strongly emphasises the urgent need for improved healthcare services in Waikanae. Residents consistently call for more GP services, with many unable to register locally due to capacity issues. There's a significant push for a hospital or at least a 24-hour emergency facility on the Kāpiti Coast. Some suggest establishing an ambulance base in Waikanae.

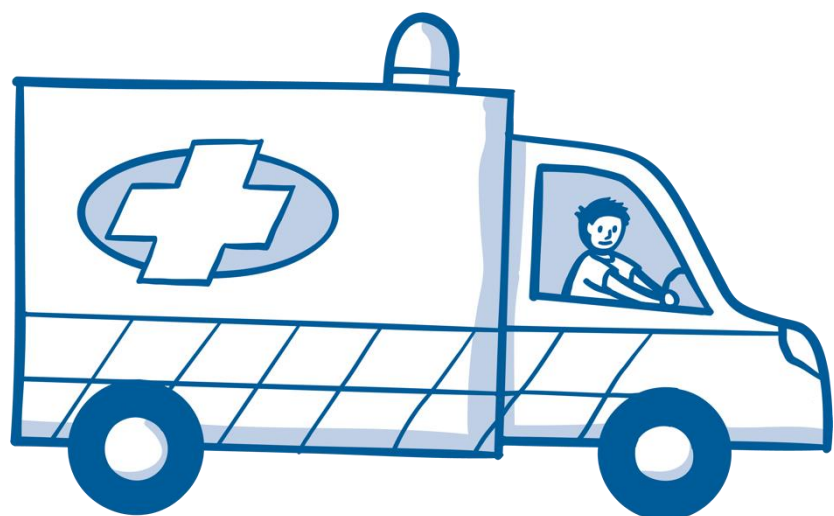
Improve access to hospital services

The community feedback strongly emphasises the need for improved access to hospital services. Residents consistently call for a local hospital on the Kāpiti Coast, citing the current hour-long drive to the nearest facility as a significant concern. There's a desire for a fully serviced hospital capable of handling accidents, emergencies, maternity care, and specialised services for the ageing population. Many highlight the need for 24-hour emergency access. The community sees a local hospital as crucial for supporting the growing population and ensuring timely medical care, particularly for elderly residents.

Other themes included:



- Care and services for elderly and people with disabilities.





Kai Food

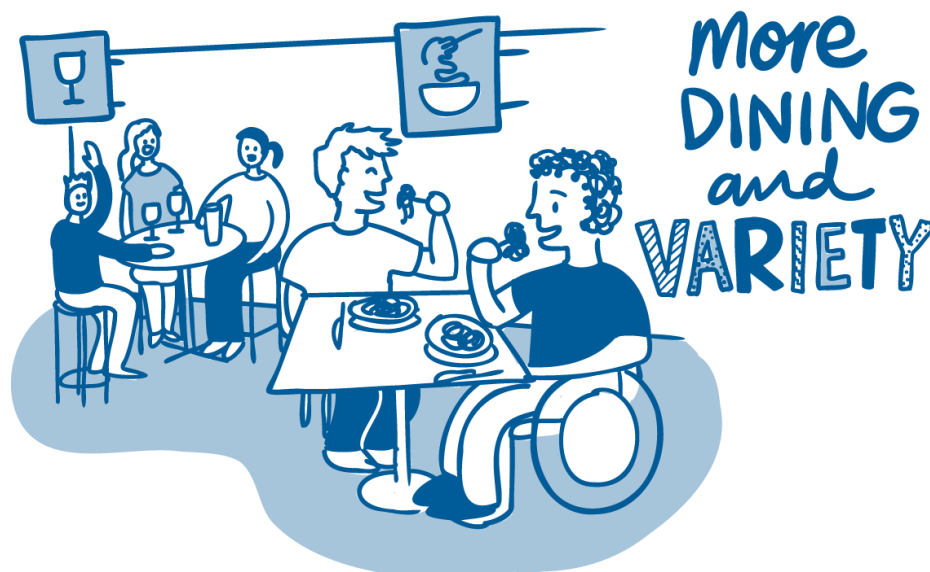
The feedback related to Kai | Food highlighted a strong interest in supporting local food production and businesses. Residents expressed concerns about development on arable land, suggesting a desire to protect local agricultural resources. There was support for local growers and marketers, with calls to simplify and reduce costs for market stall consents. The community showed enthusiasm for introducing local competition against supermarkets, potentially to promote more diverse and locally sourced food options. Residents also expressed enjoyment of the variety of cafés and restaurants, indicating a desire to encourage investment in local dining establishments. Overall, the feedback reflected a community keen on fostering a vibrant, locally focused food economy while preserving agricultural land.

The theme that emerged from community feedback is:

Enjoy the variety of cafés & restaurants

The community feedback highlights a strong appreciation for the café and restaurant scene. Residents value the diverse dining options, particularly in the beach area, which contribute to a vibrant local culture. Many enjoy the combination of quality eateries with the relaxed, beachside atmosphere.

The cafés and restaurants are seen as important social hubs, enhancing the community feel and providing gathering spaces for both locals and visitors. Overall, the dining options are considered a key part of the appeal, complementing its natural beauty and laid-back lifestyle.



Encourage investment in local dining

The community feedback strongly emphasises the need to revitalise the shopping areas, particularly Mahara Place. Residents call for more diverse retail options, quality bars, and restaurants to create a vibrant town centre. There's a desire for evening dining options and wine bars to improve nightlife. Many suggest incentivising new businesses to fill empty shops and potentially developing accommodation above retail spaces. Some propose a new supermarket near the expressway off-ramp. Overall, there's a strong push to make Waikanae a dining destination with a village feel, attracting both locals and visitors.

Other themes included:

- Concern regarding development on arable land
- Simplify and make cheaper consent process for stalls
- Support local growers and marketers.





Mātauranga Education & Training

The feedback related to Mātauranga | Education & Training centred on expanding and improving educational facilities and opportunities. Residents called for increased school capacity and the establishment of new schools, including primary schools and early childhood centres. There was support for developing more educational courses and facilities, with an emphasis on providing pathways to employment, including apprenticeship programmes. The community also highlighted the need for improved public transport options to access educational institutions. Some concerns were raised about the locations of new colleges. Overall, the feedback reflected a desire for comprehensive education infrastructure that caters to various age groups and supports career development, while ensuring accessibility for all students.

The most common themes that emerged from community feedback are:

New schools

The community feedback strongly emphasises the need for additional educational facilities to accommodate growth. Residents consistently call for a new primary school, particularly to serve the beach area. Many suggest a third primary school is necessary to prevent existing schools from becoming overcrowded. There's also significant support for a local secondary school or college, with some noting the current primary school population could sustain one. Some residents propose an intermediate school as well. Overall, the community sees new schools as crucial for supporting families and maintaining appeal to younger residents.



More educational courses & facilities

Community feedback indicates a desire for expanded educational opportunities beyond traditional schooling. Residents call for more community spaces that could host various courses and activities. There's interest in developing community gardens, which could serve as educational resources. Overall, the community seems to want a broader range of learning opportunities that cater to different age groups and interests.

Other themes included:



- Improve public transport options to access education
- Provide pathways and courses to enter employment
- Concern about new college locations.



Ngā Hono Networks & Connectivity

Ngā Hono | Networks & Connectivity feedback highlighted a strong focus on improving transportation and infrastructure. Key priorities included enhancing public transport services, extending walkways, cycleways and bridleways, and addressing road safety and traffic management concerns. Residents called for better connectivity between areas, including specific infrastructure projects like bridges and extended bus routes. There was emphasis on sustainable transport options, balanced with the need to accommodate increased car usage. The community also expressed interest in developing tourist routes and improving access to commercial areas. Overall, the feedback reflected a desire for a comprehensive, multi-modal transport system that improves accessibility while supporting the area's growth and tourism potential.

The most common themes that emerged from community feedback are:

Improve road safety & use with increased cars

The community feedback emphasises several key road safety concerns. Residents call for traffic calming measures, particularly in beach areas and residential streets, including speed bumps, planted roundabouts, and reduced speed limits. There's a strong desire for better pedestrian crossings, especially on busy roads like Te Moana Road. Many want improved

cycle lanes and shared paths to separate cyclists from vehicles. Some suggest upgrading narrow roads like Ngarara Road to accommodate increased use. Overall, there's a focus on creating safer streets for all users, including pedestrians, cyclists, and motorists.



Improve traffic management for increased cars

The community feedback highlights the need for better traffic flow and infrastructure to accommodate increased vehicle numbers. Residents call for improved road layouts, particularly at key intersections like Te Moana Road and Rauparaha Street. There's support for additional access points to the expressway, including a full interchange at Peka Peka. Many suggest better public transport options to reduce car dependency, including on-demand services and improved bus routes. The community also wants better parking solutions, especially in the town centre and beach areas. Overall, there's a desire for a comprehensive traffic management plan that balances growth with maintaining local character.

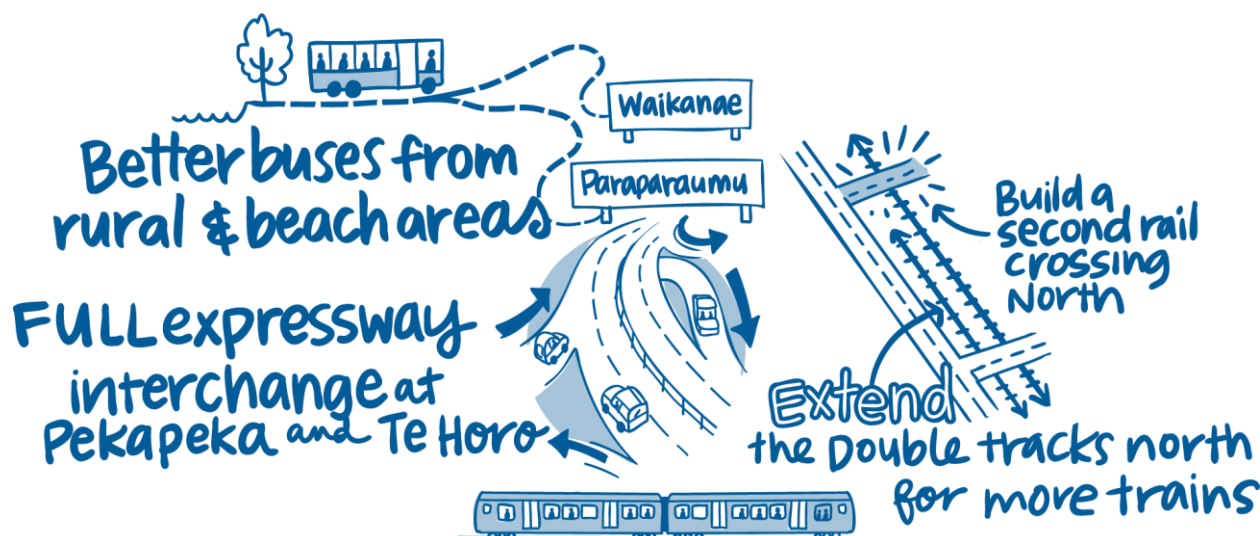
Residents value their proximity to facilities

The community feedback strongly emphasises appreciation for a balanced lifestyle, offering both tranquillity and convenience. Residents value the easy access to natural amenities like beaches, rivers, and hills, alongside urban facilities. Many highlight the ability to walk or cycle to shops, cafés, and public transport. The proximity to Wellington for work, while maintaining a quieter lifestyle, is frequently mentioned. Local facilities like the Pool, Art Gallery, and Farmers' Market are appreciated. Overall, the community cherishes the unique blend of rural peace and urban accessibility.

Other themes included:



- Residents enjoy the walkways
- Extend public transport network
- Extend and maintain footpaths.





Ohunga Income & Work

Ohunga | Income & Work feedback highlighted a strong desire to boost local economic vitality while maintaining the area's character. There was significant support for attracting new businesses and employers, promoting local job opportunities, and enhancing the tourism industry. Residents emphasised the importance of supporting existing local businesses and improving the visual appeal of commercial areas, including addressing vacant properties. The community showed interest in diverse shopping options and encouraged investment in local shops and dining establishments. However, some voiced concerns about over-commercialisation. There were calls for business networking opportunities and market days to promote local trade. Maintaining affordable rates was seen as crucial for supporting the local economy. Overall, the feedback reflected a desire for a vibrant, diverse local economy that balances growth with preserving the area's unique appeal.

The most common themes that emerged from community feedback are:

Address vacant properties & improve town appeal

The community feedback strongly emphasises concerns about empty shops, particularly in Mahara Place and along the old State Highway 1. Residents call for measures to fill these vacancies, including potential penalties for landlords leaving properties empty long-term. There's a desire to revitalise the town centre by attracting diverse businesses, especially cafés and evening venues.

Many suggest improving the visual appeal of shop fronts and public spaces. Residents want a vibrant, attractive town centre that encourages community gatherings and supports local businesses. There's also interest in mixed-use developments and housing intensification near the town centre to increase foot traffic and support retailers.

Encourage investment in local shopping & dining

Residents call for more diverse retail options, quality bars, and restaurants to create a vibrant town centre. There's a desire for evening dining options and wine bars to improve nightlife. Many suggest incentivising new businesses to fill empty shops and potentially developing accommodation above retail spaces. Some propose a new supermarket near the expressway off-ramp.

Other themes included:



- Community members enjoy visiting local shops
- Stop commercialising and development
- Maintain affordable rates.

Support for local businesses & groups

The community feedback emphasises the need for stronger support of local businesses. There's a desire for improved transport links to make local shopping more accessible. The community wants support for local markets and community-led exchanges. There's also interest in promoting Waikanae as a destination to attract visitors. Overall, residents see business growth as crucial for the town's vitality and want the Council to actively encourage and support local enterprises.

**Vibrant
SPACES,
shops
all let** →



2.3 Partnership

Below is a summary of the key findings related to 'Partnership'.



He Waka eke noa/A Shared Waka Community Partnership

The feedback related to He Waka eke noa/A Shared Waka | Community Partnership highlighted concerns about council governance, communication, and fiscal responsibility. Residents called for improved response times and better communication from the Council, including support for newsletters and local paper engagement. There was emphasis on focusing on core Council functions and services, with calls to reduce expenditure and address concerns about spending, debt, and rates increases. The community stressed the importance of their involvement in decision-making processes, with criticism of current consultation methods. Specific projects, such as the Waikanae Futures Document, were mentioned for inclusion in the Council's vision. Overall, the feedback reflected a desire for a more responsive, fiscally responsible Council that prioritises core services and meaningful community engagement in its governance approach.

The most common themes that emerged from community feedback are:

Incorporate Waikanae Futures document

The community feedback strongly emphasises the need to incorporate the existing Futures Document for Waikanae Beach, which was adopted in 2017. Residents consistently call for this document to be at the forefront of all discussions and decisions relating to the beach area. Many view it as a comprehensive vision that doesn't

need reinventing. There's a desire for the Council to formally adopt and integrate this document into long-term planning for Waikanae Beach. Residents see it as crucial for maintaining the area's unique character and guiding future development in line with community wishes.

Concern about Council spending & rates increases

The community feedback strongly criticises proposed rate increases, particularly a 17% hike. Residents express deep concern about the financial burden during a cost-of-living crisis. Many call for the Council to focus on core services and reduce costs rather than pursue 'grandiose plans'. There's a demand for fiscal responsibility and abandonment of projects requiring significant additional funding. Some suggest the Council should aim to reduce rates year-on-year. Specific criticisms include wasteful spending on temporary plantings, with suggestions for more sustainable, low-maintenance landscaping options. Overall, there's a clear call for financial prudence and prioritisation of essential services.

Other themes included:



- Criticism of consultation processes
- Council to focus on core functions.

Strengthen community input & decision making

The community feedback emphasises a desire for more localised planning and increased engagement with the council. Residents call for greater say for full-time locals over weekend property owners. There's support for actively encouraging and supporting community groups and initiatives. The community desires more active involvement in decisions affecting their areas, including stormwater management and community facilities development.



2.4 Comparison of Vision Waikanae and Vision follow up survey results

This section presents the key similarities and differences between the Vision Waikanae initial survey and the Vision follow up survey.

2.4.1 Key Similarities

Community connections — Both surveys highlight the importance of community spaces and facilities. The initial survey emphasised creating inclusive spaces and upgrading public amenities, while the follow-up survey reiterated the need for facilities catering to different age groups.

Transportation and infrastructure — Both surveys mention the need for improved public transport, traffic management, and road safety. The follow-up survey specifically mentions better bus connections in certain areas.

Housing concerns — Both surveys touch on housing issues, including balancing intensification with character preservation and concerns about high-density housing.

Environmental protection — Both surveys emphasise the importance of protecting beaches, waterways, and green spaces.

Healthcare — Both surveys mention the need for improved healthcare facilities and services, including better access to hospitals.

2.4.2 Key Differences

Economic focus — The initial survey had a stronger emphasis on economic aspects like addressing vacant properties and supporting local businesses. This was less prominent in the follow-up survey.

Climate change — The follow-up survey introduced new concerns about climate adaptation planning costs and climate change "fearmongering," which weren't explicitly mentioned in the initial survey.

Council spending — The follow-up survey placed more emphasis on concerns about Council spending, debt, and rates increases. This was less prominent in the initial survey.

Specific facilities — The follow-up survey introduced new specific requests, such as a dedicated dog park for small dogs and indoor recreational facilities like trampoline parks and rock-climbing walls.

Education — While both surveys mentioned education, the follow-up survey had more specific support for new primary schools.

2.4.3 Implications for Vision Waikanae Refinement

Maintain core themes — Retain and potentially strengthen language around community connection, environmental stewardship, housing diversity and affordability, and infrastructure improvements.

Incorporate emerging concerns — Update the Vision to reflect new community priorities around specific amenities, safety measures, and quality of life issues.

Address fiscal responsibility — Include language that acknowledges the importance of responsible financial management and prioritisation of core services.

Reference community initiatives — Consider mentioning key community-driven projects to demonstrate responsiveness to evolving local priorities.

Increase specificity — Where appropriate, refine broader vision statements to reflect more specific community needs and desires identified in the follow-up survey.

Balance continuity & evolution — Craft a vision that honours longstanding community values whilst also demonstrating adaptability to changing needs and priorities.

Emphasise ongoing engagement — Given the refinement of ideas between surveys, the vision could highlight a commitment to continued community dialogue and responsiveness to evolving needs.

3 Data analysis methodology

3.1 Survey data analysis

PublicVoice used a step-by-step method called thematic analysis to review the open-ended responses from the Vision Waikanae community engagement survey. This method follows five main steps:

1. Understanding the data: Analysts read the survey data multiple times to grasp its content.
2. Initial coding: The survey data was sorted into labelled segments highlighting key points.
3. Identifying themes: These segments were then grouped into broader themes specific to the survey questions.
4. Refining themes: Themes were checked for relevance and clarity within the survey context.
5. Finalising themes: Each theme was carefully defined, possibly with sub-themes, to represent the survey responses accurately.

3.2 Key findings analysis

To generate the key findings, PublicVoice combined the survey data with additional feedback points received from the Waikanae Engagement Hub as part of Vision Kāpiti engagement. The analysis of the combined data was structured using the framework of the Council's Doughnut Economic Framework, which provides a holistic view of the community's well-being by considering social, cultural environmental, and economic factors.

The key findings were organised into themes that align with the various dimensions of the Doughnut Framework. This approach allowed for a comprehensive understanding of the community's values, priorities, and concerns, extending beyond the specific questions asked in the survey.

3.3 Reporting

For the survey data, tables illustrating the frequency of the key themes have been included to demonstrate the significance of each theme. Only descriptions of the most frequent themes have been included in Section 4, "Key Findings from the Vision Waikanae survey," to highlight the main points expressed by respondents.

In contrast, Section 3 reports the essential findings and presents the most common topics from the combined data. This section provides a more detailed analysis, offering valuable insights and guidance for the Council's decision-making processes and future planning efforts.

By differentiating between the analysis and reporting approaches for the survey data and the key findings, the methodology section clarifies the distinct methods used to examine and present the community's feedback.

Phase One: Gathering initial views

4 Vision Waikanae survey

This section presents the key findings from the Vision Waikanae community engagement survey which received 179 responses.

The survey asked three questions:

- What part of the wider Waikanae area do you live in or associate with?
- What are the features of Waikanae you like, that make it unique?
- What could be improved to help support the community now and into the future?

The analysis of survey data has been structured using the Council's Doughnut Economic Framework. The key findings are organised into themes that align with the various dimensions of the Doughnut Framework.

The most common topics that emerged from the community feedback are highlighted for each theme. These insights shed light on the Waikanae community's values, priorities, and concerns, offering valuable guidance for the Council's decision-making processes and future planning efforts.

4.1 What part of the wider Waikanae area do you live in or associate with?

Respondents of the local survey were asked what part of the wider Waikanae area they lived in or associated with.

Localities identified by respondents included:

- Reikorangi
- Hemi Matenga, the Hill and Waikanae East
- Central Waikanae, Western Waikanae and Waikanae North,
- Waikanae River, Waikanae Garden Precinct and Waikanae Park
- Waikanae Beach and Old Beach
- Peka Peka
- Te Horo and Te Horo Beach.

4.2 What are the features of Waikanae you like, that make it unique?

Respondents were asked what they liked most about Waikanae, including what made it unique. Table 1 details the various aspects identified by respondents.

Overview of responses

River/ocean quality — Respondents express positive sentiments about river/ocean quality in Waikanae. They highlight features such as the beaches and the river. There is an appreciation for the natural beauty, proximity to waterways and parks, and the relaxed beach lifestyle.

Biodiversity — Respondents are positive about the biodiversity in Waikanae and value the beautiful natural environment, including the beaches, rivers, and hills. The proximity to green spaces, parks, and recreational activities such as walking and cycling also contribute to their positive sentiments.

Peace & safety — Respondents highlighted the importance of peace and safety, emphasising the lack of crime and the feeling of being in a safe place. Overall, the respondents appreciate the area's safe and peaceful environment, amenities, and community atmosphere.

Networks & connectivity — Respondents expressed positive sentiments about the network and connectivity in the area. Proximity to facilities such as the beach, river, and shops were highlighted, along with easy access to transportation links.

Lifestyle — Respondents appreciate the countryside and rural areas, as well as the sense of community and connection that comes with it. The village atmosphere, friendly people, and natural environment are important aspects of lifestyle.

Connections with others — Respondents express positive sentiments about their connections with others in the community. They highlight the friendliness of the people, the sense of belonging, and the close-knit community.

Recreation & leisure — Respondents express positive sentiments about recreation and leisure in Waikanae. They appreciate the new playground, access to community spaces, sports facilities, and the ability to walk and play in various areas. The natural environment, including the beach, river, hills, and bird life, is highly valued.

Land use & quality — Respondents appreciate the wide-open spaces, lovely gardens, and low-rise buildings contributing to a relaxed holiday vibe. The absence of high-rise buildings and high-density housing is crucial in maintaining the unique beach community and preserving the area's natural beauty.

Food — Respondents express positive sentiments about food in the Waikanae area, highlighting aspects such as the presence of cafés and restaurants.

Income & work — Respondents mention that they enjoy the area's small businesses and amenities like shops and cafés that are easily accessible.

Theme	Subtheme	Frequency
RIVER/OCEAN QUALITY		167
	Proximity to seaside and beaches	97
	Proximity to local rivers	52
	Proximity to the ocean/sea	18
BIODIVERSITY		117
	Proximity to nature	51
	Enjoy visiting local parks/reserves	25
	Enjoy marine, fresh-water and bird life	15
	Proximity to mountains/hills	15
	Proximity to wetlands	7
	Proximity to forests	4
PEACE & SAFETY		67
	Enjoy the relaxing/peaceful atmosphere	53
	The area is safe	14
NETWORKS & CONNECTIVITY		65
	Proximity to facilities	24
	Enjoy the walkways	23
	Enjoy the cycleways	11
	Accessible and reliable public transport	7
LIFESTYLE		55
	Rustic/rural appeal of the town	17
	Fond of small-town character	15
	Appreciate the village feel	14
	Appreciate the slower lifestyle	9
CONNECTIONS WITH OTHERS		54
	A sense of belonging in the community	25
PublicVoice		40

Theme	Subtheme	Frequency
	Friendly community	22
	Family-oriented Environment	4
	Community spaces	3
RECREATION & LEISURE		31
	Walking	19
	Outdoor activities	5
	Activities catering to all people	4
	Dog-friendly community	3
LAND USE & QUALITY		27
	Low rise buildings	17
	Enjoy and take pride in gardens	7
	The location	3
FOOD		14
	Enjoy the variety of cafés/restaurants	14
INCOME & WORK		12
	Enjoy visiting local shops	12
CLIMATE & CHANGE		7
	Enjoy the local climate and weather	7
CULTURE		5
	Appreciate the diversity in local arts and culture	2
	Support for the arts and culture	2
	Appreciate the local/iwi history	1

Table 1: What are the features of Waikanae you like that make it unique?

Selected quotes

"The beach, the river and trails, the village feel at the beach, the bird life and marine life, being able to walk my dog in so many areas. The peace."

What are the features of Waikanae you like, that make it unique?

"Slow beachside pace with incredible cafés. The wide Waikanae area has a strong creative focus. You never know who you're speaking to."

What are the features of Waikanae you like, that make it unique?

"It's quiet, safe but handy to most amenities. The beach and lagoons are very good places to enjoy with kids or just places to be. It's a lovely area to ride bikes."

What are the features of Waikanae you like, that make it unique?

4.3 What could be improved to help support the community now and into the future?

Respondents were asked what they wanted to see in Kāpiti in the next generation. Table 2 details what respondents wish to see.

Overview of responses

Connections with others — The respondents express various concerns and desires regarding the topic of connections with others. Some key aspects mentioned include more community spaces and facilities, such as a new community hall and a state-of-the-art library. Respondents also expressed the need for more playgrounds and public spaces that cater to the diverse population.

Networks & connectivity — Respondents emphasise the need for improved public transportation, including on-demand services, and better connectivity to other areas. There are calls for infrastructure upgrades, such as roads, footpaths, and a new community hall, and the preservation of the beachy character of the area.

Income & work — Respondents mentioned several aspects regarding income and work in Waikanae. They highlighted the need for more shops and businesses in Mahara Place to attract customers and fill the empty buildings. There were also calls for better commercial opportunities and support for local businesses. Additionally, respondents mentioned the importance of job opportunities in the area to maintain a vibrant and unique community.

Housing — Respondents mention the importance of better housing and lower rates. They also emphasise the need for housing for all generations, including small-scale retirement villages, intergenerational living, and homes for the homeless.

Land use & quality — Respondents emphasise the importance of building infrastructure to cope with increased housing development and ensure proper waste management systems. Many respondents also stress restricting high-density housing and maintaining green spaces. The limiting of large-scale developments is mentioned as well. Additionally, maintaining the special beachside character of the area through planning regulations is highlighted as an important aspect of planning.

Biodiversity — Respondents emphasise the need for enhanced environmental protection, including preserving native trees and maintaining water quality. Many respondents also stress the importance of preserving the beach's natural beauty and avoiding overdevelopment. Respondents also desire to enhance, protect, and connect with the environment, including native flora and fauna.

Climate & change — Respondents have expressed concerns about the impact of development on infrastructure, particularly regarding water and waste systems. Several respondents emphasise the importance of managing sea level rise and adapting to forecasts, while others mention the need for better stormwater management and maintenance. Additionally, there are calls for improved recycling facilities in Waikanae.

Water — Respondents emphasise the need for infrastructure development to handle increased housing and avoid waste and sewerage issues. Additionally, there are calls for better stormwater management, addressing rising sea levels, and improving communication and consultation on infrastructure spending priorities.

Partnership — Respondents express the need for a positive narrative about the district and emphasise the importance of renewing and supporting core services, such as infrastructure and stormwater management. They also highlight the desire for a welcoming atmosphere, improved signage, an upgrade to the vegetation at the Park N Ride car park, and speedier responses from the Council. Additionally, there is a strong call for a new community hall at Waikanae Beach and the incorporation of the existing Futures Document for Waikanae Beach, which was completed in 2017.

Health — Respondents express the need for better health services, including hospitals and medical centres, closer to their community. They also highlight the need for more doctors. The community also emphasises the importance of improving access to healthcare and ambulances.

Education & Training — Respondents advocate for various improvements and additions to education and training in Waikanae, including establishing a new high school, primary school, and intermediate.

Theme	Subtheme	Frequency
CONNECTIONS WITH OTHERS		152

Theme	Subtheme	Frequency
	Create and maintain inclusive spaces	83
	New/improve Waikanae library	16
	Develop spaces for gatherings/events	15
	Development of youth-focused activities/facilities	9
	More recreational areas for various age groups	8
	Thriving connected community/supportive of others	6
	Improve accessibility/usage of public spaces	5
	Support for community sports/outdoor activities	5
	More cultural events/activities/promotion	3
NETWORKS & CONNECTIVITY		115
	Improve traffic management for increased cars	30
	Improve road safety and use with increased cars	28
	Extend public transport network	18
	Extend and maintain footpaths	16
	Extend and maintain cycleways	9
	Restrict and monitor vehicles on beaches	8
	Infrastructure investment	6
INCOME & WORK		54
	Address vacant properties/improve town appeal	18
	Encourage investment in local shopping and dining	12
	Support for local businesses/groups	11
	Stop commercialising/development	7
PublicVoice		44

Theme	Subtheme	Frequency
	Strengthen community input/decision making	6
HOUSING		47
	Balance intensification with character preservation	13
	Infrastructure development for new housing areas	9
	Reduce urban sprawl	8
	Concern regarding high-density housing	6
	Focus on increasing housing supply	5
	Implement high-density housing/apartments	3
	Increase accessibility to/accessible housing	3
LAND USE & QUALITY		39
	Balance intensification with character preservation	13
	Infrastructure development for new housing areas	9
	Reduce urban sprawl	8
	Concern regarding high-density housing	6
	Implement high-density housing/apartments	3
BIODIVERSITY		33
	Protect beaches/waterways and green Kāpiti	33
CLIMATE & CHANGE		26
	Efficient waste management/recycling systems	21
	Climate change mitigation	5
WATER		25
PublicVoice		45

Theme	Subtheme	Frequency
	Address concerns around water quality/waste	20
	Improve water services	5
PARTNERSHIP		25
	Incorporate Waikanae Futures Document	22
	Focus on core Council functions	3
HEALTH		17
	Establishment of local healthcare facilities	13
	Improve access to hospital services	4
EDUCATION & TRAINING		15
	New school/s	12
	More educational courses/facilities	3
PEACE & SAFETY		7
	Improve animal safety/control	7

Table 2: What could be improved to help support the community now and into the future?

Selected quotes

"Easier transport link to the town? A shopping - pickup van within the Waikanae district. Also update in local papers re what the Waikanae Community Board actually do & what goals they are achieving."

What could be improved to help support the community now and into the future?

"Controlling building of new ugly homes in the Old Beach area. Slow down traffic on Rauparaha Street with speed bumps, planting areas in middle of road, new community hall."

What could be improved to help support the community now and into the future?

"Better healthcare - a hospital for Kāpiti. Better children's play facilities and things for teenagers to do rather than tagging."

What could be improved to help support the community now and into the future?

"A more direct bus service to the beach. A new community hall near the beach. The incorporation of the Futures document for Waikanae Beach."

What could be improved to help support the community now and into the future?

"Mahara Place is dying. Waikanae desperately needs a quality bar and food outlet."

What could be improved to help support the community now and into the future?

Phase Two: Testing what we have heard so far

5 Vision follow up survey

This section of the report summarises community feedback received as part of the Vision follow up survey. The community was provided with a summary of the feedback received from the initial engagement for reflection and refining.

5.1 Does this reflect what's important to you?

Respondents were asked whether the feedback received reflected what was important to them. Table 3 is a summary of the feedback received.

Overview of responses

Connections with others — Respondents express the need for support for all age groups, not just the elderly, emphasising the importance of age-appropriate facilities for families with children and teens. They also mention a lack of activities for teenagers, and the importance of preserving the town's unique character and community feel. Additionally, respondents express the need for accessible options and support services for vulnerable or isolated individuals of all ages.

Networks & connectivity — Respondents expressed a need for better bus connections in Peka Peka and Te Horo, specifically mentioning the inconvenience of the last bus stop in Waikanae Beach being too far away. Additionally, there were

suggestions to extend the Waikanae River walkway and improve public transport options.

Community partnership — Respondents express concern about the proposed 17% rate increase and the financial hardship it will cause. They want the Council to focus on delivering current core services at a reasonable cost and reduce current expenses. Some respondents question the effectiveness of Council hearings and meetings in encouraging community participation and suggest the need for more open briefings and workshops. There is also a desire for the Council to be more aspirational and consider the views of different age groups in their plans.

Theme	Subtheme	Frequency
CONNECTIONS WITH OTHERS		14
	Development of youth-focused activities/facilities	4
	Facilities for different age groups	4
	Preserving village/community atmosphere	3
	Rejuvenation/development of existing areas	3
NETWORKS & CONNECTIVITY		13
	Improved public transport	5
	Traffic management and road safety	5
	Improve/expand cycling and walking paths	3
COMMUNITY PARTNERSHIP		8
	Concern about Council spending and debt	4
	Criticism of consultation process	4
HEALTH		5
	Desire for local hospital/emergency services	2
	Improved access to healthcare facilities	2
	Improve support for disabled	1
BIODIVERSITY		4
	Tree planting and green space preservation	4
INCOME & WORK		4
	Desire for more diverse shopping options	4
OTHER		4
	Concern about rates increases	4
CLIMATE & CHANGE		3
	Concern about climate adaptation planning costs	1
	Concern about climate change fearmongering	1
	Focus on climate change mitigation	1
HOUSING		3

Theme	Subtheme	Frequency
	Concern about housing regulations	1
	Support for affordable/more housing	1
	Support for high-density housing	1
EDUCATION & TRAINING		3
	Support for new primary schools	3
RIVER/OCEAN HEALTH		2
	Improvements to stormwater systems	2
LAND USE & QUALITY		1
	Balancing development with character preservation	1

Table 3: Does this reflect what's important to you?

Selected quotes

"Somewhat, the public transport links between Waikanae and Paraparaumu are woeful. It takes a crazy amount of time to get from in Waikanae to anywhere in Paraparaumu."

Does this reflect what's important to you?

"We do need the 'on demand' bus particularly if elderly need to stay in their own homes. Transport and accessible options are important when we grow and develop. We need other support services for all ages particularly for vulnerable or isolated."

Does this reflect what's important to you?

"Yes, however we'd like to see some substantial environmental protection and rehabilitation at the river mouth of the Mangaone Stream at the Beach: non-native beachside plants etc removed/replaced. Also, the banning of vehicles at the Mangaone Stream lagoon and beachside mouth area (from corner of Te Horo Beach Road & Rodney Ave)."

Does this reflect what's important to you?

5.2 Is there anything missing?

Respondents were asked whether there is anything missing. Table 4 provides an overview of what respondents feel is missing.

Overview of responses

Connections with others — Respondents express a desire for a dedicated dog park for small dogs, as there are safety concerns with large dogs at current parks. There is a need for more recreational facilities such as trampoline parks, rock climbing walls, mini golf, and bowling in Waikanae. Additionally, there is a call for a community centre that supports volunteer groups, a small performance space for cultural activities, and a purpose-built music venue to celebrate the town's talent.

Biodiversity — Respondents are concerned about the abuse of the Waikanae River and its surrounding environment, with issues such as littering, vandalism, and overcrowding at popular swimming holes. They highlight the need for signs, more rubbish bins, and strategies to reduce these impacts. There is also a call for a commitment to protecting the environment, increasing biodiversity, and addressing climate change by planting indigenous species and reducing emissions and plastic waste. However, some respondents feel that there is a lack of focus on these issues in the current plan.

Networks & connectivity — Respondents express the need for better infrastructure for cyclists, including a new bridge and separate cycle paths to ensure safety. There is also a desire for improved signage, with English names prioritised, and the need for footpaths on both sides of certain roads for the safety of pedestrians, especially the elderly and young families.

Theme	Subtheme	Frequency
CONNECTIONS WITH OTHERS		25
	Fenced in dog parks needed	6
	A community owned hall	5
	Cultural and arts facilities and events	5
	Indoor sports and recreational facilities	5
	Increased regulation and monitoring of dogs	4
BIODIVERSITY		10
	Focus on environmental conservation	7
	Pest control and management	3
NETWORKS & CONNECTIVITY		8
	Improve road safety and use with increased cars	8
HOUSING		8
	Build more retirement homes	4
	Maintain affordable rates	4
HEALTH		7

Theme	Subtheme	Frequency
	Improved healthcare facilities and services	7
COMMUNITY PARTNERSHIP		5
	Concern about Council spending and rates increases	5
INCOME & WORK		4
	Address vacant properties/improve town appeal	4
CLIMATE & CHANGE		4
	Focus on climate change mitigation and adaptation	4
PEACE & SAFETY		3
	Enhanced community safety measures	2
	Address crime in the community	1
LAND USE & QUALITY		3
	Concern regarding high density housing	1
	Concerns about urban development impacts	1
	Preservation of local character and heritage	1
FOOD		3
	Encourage investment in local shopping and dining	3
RIVER/OCEAN HEALTH		2
	Improve water quality of Waikanae Lagoon	1
	Increased consultation around beach and river	1
WATER		1
	Improved water management and quality	1
EDUCATION & TRAINING		1
	New kindergarten/early childhood centre	1

Table 4: Is there anything missing?

Broader community engagement

In addition to the targeted Vision Waikanae surveys and workshops, several other community engagement initiatives have provided valuable insights into the priorities, concerns, and aspirations of Waikanae residents. These broader engagement efforts have captured a wide range of perspectives on various aspects of community life, from long term planning to specific local projects.

The following sections summarize key findings from:

- The Long Term Plan 2024-2034 consultation process
- Friends of Te Horo Beach: Participatory Mapping Activity
- The Waikanae Library consultation process

These additional sources of community feedback complement and enrich the Vision

Selected quotes

"Great ideas have been put forward. A gravel (rural) cycling track along Te Horo Beach Road would add to the amazing cycle track network we already have. Te Horo Beach Road is quite narrow, and this would make cycling a lot safer."

Is there anything missing?

"YES!! Where is the commitment to dealing with the effects of climate change and reducing our climate-related impacts - reducing emissions and plastic waste and increasing biodiversity. For example, let's replace our exotic grasses and trees with indigenous species. What about a real commitment to "Protect our environment - Te Ao". Our dunes and reserves are our special places."

Is there anything missing?

Waikanae engagement, offering a more comprehensive understanding of the community's vision for its future. By considering these diverse inputs, we can ensure that the Vision Waikanae reflects a broad spectrum of community voices and addresses both immediate concerns and long-term aspirations.

The insights gathered from these broader engagement initiatives align with and expand upon many of the themes identified in the Vision Waikanae process, providing a robust foundation for future planning and decision-making in the area.

6 Relevant Insights from the Long-Term Plan Process

The Long Term Plan (LTP) 2024-34 consultation process gathered valuable community feedback on future development. This engagement captured a wide range of perspectives on issues affecting the area's growth, infrastructure needs, and community well-being.

Feedback covered topics such as rates affordability, stormwater management, housing development, transport improvements, and community facilities. These insights highlight the community's priorities and concerns, providing important guidance for shaping Waikanae into the future.

The following subsections summarise the key themes that emerged from the LTP consultation, offering an overview of residents' views on development over the next decade. These findings complement and reinforce the insights gathered through the Vision Waikanae engagement, contributing to a more comprehensive understanding of the community's vision for the future.

6.1 Rates and Affordability

Affordability concerns — Significant concern about the affordability of proposed rate increases, particularly given current economic challenges.

Cost efficiency — Calls for the Council to identify savings opportunities and justify its capital works programme.

6.2 Infrastructure & Flood Management

Stormwater prioritisation — Prioritising stormwater and flooding issues in Waikanae.

Flood prevention — Calls for improved stormwater management and regular maintenance of river control structures to prevent flooding.

Erosion management — Addressing erosion concerns at the south side of the Waikanae River mouth.

6.3 Community Facilities

Community Hall replacement — Advocacy for a \$2 million Council contribution towards replacing the Waikanae Beach Community Hall.

6.4 Housing

Older Persons' Housing — Strong support for transferring older persons' housing assets to a new Community Housing Provider.

Housing services improvement — Expectation that this approach will improve services for tenants and enable portfolio growth without burdening ratepayers.

6.5 Urban Development & Growth

Rezoning advocacy — Strong advocacy for rezoning land in Waikanae East and Waikanae North from rural to urban to enable residential development.

Infrastructure Studies — Requests for Council support in infrastructure feasibility studies and collaborative plan change processes with landowners.

6.6 Transportation

Speed concerns — Concerns about excessive vehicle speeds on Te Moana Road.

Traffic calming measures — Requests for traffic calming measures such as road markings, raised pedestrian crossings, and signage.

6.7 Environmental Concerns

Climate action rate — High opposition to introducing a new targeted climate action rate, reflecting scepticism about climate change initiatives.

Climate action funding — Preference for integrating climate action costs into regular budgetary processes.

6.8 Community Engagement

Improved communication — Requests for improved engagement with the Waikanae community on Council decisions.

Strategic asset consideration — Calls for the Council to consider the potential of Kāpiti Airport as a strategic asset for future development.

7 Friends of Te Horo Beach: Participatory Mapping Activity

The goal of the Friends of Te Horo Beach: Participatory Mapping Activity was to identify and share the significant aspects of the local community and environment.

- Data was collected through a mapping activity:
- Participants: Friends of Te Horo Beach, approximately 18 members
- Facilitator: Liz Gibson from Mountains to Sea Wellington
- Method: Group mapping exercise

The activity was structured into four main tasks:

- Drawing boundaries: Defining the focus area for Friends of Te Horo Beach
- Adding key features: Marking roads, landmarks, property boundaries, and housing areas
- Identifying significance: Marking positive and negative aspects of the area
- Cataloguing elements: Noting activities, natural features, resources, community assets, and wish list items.

The participants were divided into three groups to complete these tasks.

Key findings from the activity included:

Identifying focus area boundaries:

- Consensus on the Ōtaki River as the northern boundary and the ocean as the western boundary
- Minor differences in the southern and eastern boundaries.

Key themes - Natural environment:

- The beach is a focal point with recreational, cultural, and ecological importance
- Concerns about dog control, removal of stones and woody debris, and vehicle access on the beach
- Desire for better pest plant management (boxthorn, gorse, pampas grass)
- The Mangaone Stream is important but has water quality and human health issues due to farm contamination
- Positive views on the predator-free network and the need for a strategic approach to rabbit control.

Key themes - Community and services:

- Minimal built environment and self-reliance are valued
- Desire for no further building but improvements in community amenities

- Importance of parks and reserves, with a preference for native vegetation
- Lack of public transport and the need for a bus service to the beach community
- Concerns about low-lying roads and flood risks
- Appreciation for community security measures, public toilets, murals, and bench seats
- Importance of quietness and concerns about noise pollution from the flight path over the beach.

8 Waikanae Library

The Waikanae Library consultation process was a comprehensive six-week engagement initiative that ran from June 12 to July 22, 2023.

Data was collected through multiple methods:

- Community engagement hub: Open six days a week
- Online engagement platforms: Facilitated digital participation
- Local market stands: Provided in-person interaction
- Targeted outreach: Focused on schools and community groups
- Surveys and voting activities: Gathered structured feedback
- Written feedback collection: Allowed for open-ended responses.

Promotion efforts included:

- Local media coverage
- Social media campaigns
- Posters and bookmarks distribution

The combined efforts yielded:

- Over 437 completed feedback forms and surveys
- More than 3,000 individual comments

This section of the report will present a summary of the key findings from the consultation.

8.1 Current Use

Community members were asked how they currently use the library. The top three main uses for the library were:

- Borrowing books
- Accessing Council services and information
- Reading and leisure.

"To see if anyone I know is there. To check on magazines & publications - mainly non-fiction. To check notice boards & other sources of information. I go to Te Takere in Levin to perform music, to eat, to socialise, to see friends & musicians, to see art works of Art & Culture, to read."

How do you currently use the library?

8.2 What is your preferred option for location of the new library?

Respondents were presented with three options for the location of the new library.

These were:

- **Option 1:** Refurbish and extend the former library
- **Option 2:** Refurbish both former and pop-up library buildings
- **Option 3:** Refurbish both buildings and extend former library.

Most respondents (**50% support**) chose **Option 1** as their preferred option. Feedback on Option 1 included:

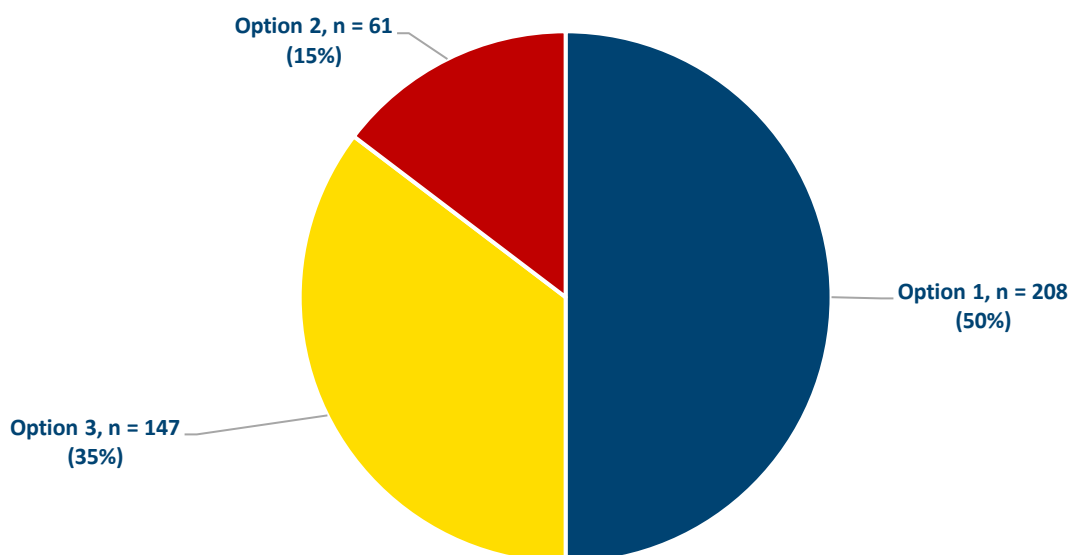


Figure 2: What is your option for location of the new library?

Reasons for choosing Option 1:

- Cost-effectiveness and affordability
- Minimal disruption to the community and Mahara Place
- No anticipated rate increases.

Additional concerns

- Long term adequacy: Worries about the Library's ability to meet future community needs
- Space constraints: Concerns about limited size and potential for future expansion
- Building quality: Some perceive it as a cold space with limited natural light.

Alternative options

- Utilising the existing Paraparaumu Library instead of expanding Waikanae Library
- Creating a smaller library with mobile services
- Focusing on digital resources to reduce physical space needs.

"Waikanae needs a space that can grow with the community, while allowing the businesses in Mahara Place to recover from the current construction project. Option one minimises disruption, allows for later expansion as needed, and minimises the need for earthquake strengthening."

What is your preferred option for location of the new library?

"Project objectives can be achieved in a smaller space. Lowest cost and most sustainable option. Reusing the old library will revitalise Mahara Place while keeping the library in scale without dominating the area."

What is your preferred option for location of the new library?

"We need to keep costs down for ratepayers. We have a main library in Paraparaumu, this should just be a small facility."

What is your preferred option for location of the new library?

" We need to consider the long term. No point cheaping out and then immediately having to plan an upgrade! Option 1 will already be at capacity!"

What is your preferred option for location of the new library?

8.3 Most important aspects for Council to consider

In the feedback form, community members were prompted to highlight what they believe to be the most crucial factors for the Council to consider when making the final decision. The analysis of responses to this query is detailed below.

- Creating a warm, welcoming, and inclusive space that serves as a multi-purpose community hub
- Managing costs and evaluating financial impact to ensure fiscal responsibility and minimise rate increases
- Future-proofing the facility to accommodate the growing population and evolving needs
- Balancing traditional library services with new amenities, including spaces for learning, working, and community activities
- Ensuring the Library is accessible and caters to all age groups, from children to seniors, reflecting the community's diverse needs.

8.4 Project Objectives

The Waikanae Library project objectives describe what the new facility aims to deliver for the community. These are:

- Support community connections
- Build healthy, resilient individuals and community
- Create a sense of place and belonging
- Provide opportunities for learning, working, and creating
- Support cultural identity and understanding
- Champion inclusivity
- Serve as an example of sustainable practices.

The community was given the opportunity to vote for their preferred objectives and give feedback regarding each objective. The most popular objectives were:

- Providing opportunities to learn, work, and create
- Supporting communities to connect
- Creating a sense of place and belonging.

The main themes mentioned by respondents relating to the objective of **Providing opportunities to learn, work and create** were:

- The Library should have spaces for talks, classes, and the creative arts
- The Library should provide flexible spaces for studying, working, and meeting
- The Library should give access to books, magazines, newspapers, and online resources.

"Would love language classes, painting classes - available afternoons, evenings dependent on who in community is ready to run them. Became hard when these stopped getting any funding years ago."

**Feedback on "Providing opportunities to learn, work and create."
What is your preferred option for location of the new library?**

"Workspaces for students to study. Meeting room(s) for WEA and other community. Learning - ancestry, computer access to Web etc."

Feedback on "Providing opportunities to learn, work and create."

The main themes mentioned by respondents relating to the objective of **Supporting communities to connect** were:

- The Library should provide multi-purpose gathering and meeting spaces with technology. These spaces should be soundproof and private
- The Library should have book clubs and events for adults and children
- The Library should have children's spaces for playing and reading.

The main themes mentioned by respondents relating to the objective of **Creating a sense of place and belonging** were:

- The Library should provide a warm and welcoming space
- The Library should have gathering or social places for various different groups and activities
- The Library should be a space for diverse cultural and entertainment events.

"Space for a range of activities including social, educational, entertainment for all people in the community."

Feedback on "Supporting communities to connect."

"Welcoming, warm, aesthetically pleasing environment. Community noticeboards etc. Destination for attending things you can connect to."

Feedback on "Creating a sense of place and belonging."

" Having 'spaces' that people can connect in, in a relaxed way e.g. in a 'coffee club'. Holding events /celebrations of different cultural Description: e.g., Matariki, Diwali "

Feedback on "Supporting communities to connect."

8.5 Other Comments

Additional comments were provided by respondents, which fall outside of the Council options and objectives provided. These are outlined as:

- Keeping it small due to Paraparaumu Library's proximity
- Various expansion ideas (additional floors, new facility, mobile services)
- Focusing on books and research rather than entertainment
- Collaborating with Mahara Gallery
- Centralising services in Paraparaumu
- Cost-effective alternatives like pop-up libraries or expanding Paraparaumu Library
- Refurbishing Mahara Gallery or expanding the existing library.

"It's disappointing that demolishing the old building isn't an option. It's pretty gross. I know that the new library will be refurbished, but it would be great to have something completely new in that space. Also, make sure you engage with your current librarians too, as librarians, not just members of the community. Most of them are pretty great and will have insights that library managers and the community won't have."

Additional comments

"All of this is very positive, thank you."

Additional comments

"What is it designed to do? How will it work? Too little information on what it is for in the brochure. Useful for elderly unable or unwilling to use technology."

Additional comments

Produced by PublicVoice Limited

Suite 2, 5 Bouverie Street

Petone

Lower Hutt, 5012

Ph: (04) 909 7463

Email: info@publicvoice.co.nz

The views expressed in this report are those of the author(s) and do not necessarily reflect the position of the Kāpiti Coast District Council. The Kāpiti Coast District Council does not accept any liability for claims arising from the reports content or reliance on it.